

CERTIFICATE OF LOCATION OF GOVERNMENT CORNER

County of Anoka

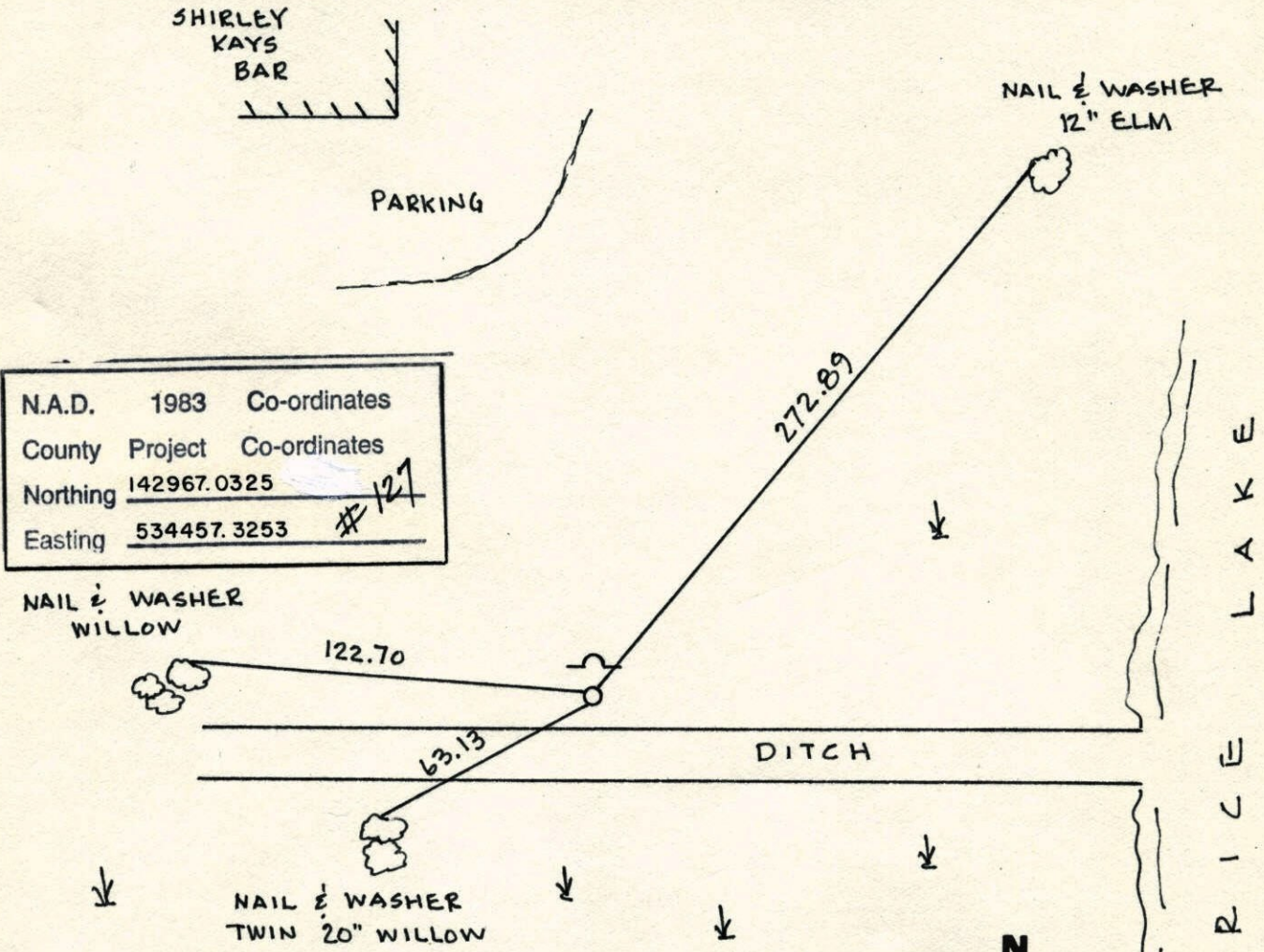
State of Minnesota

MEANDER Corner of Sec. 19 Township 31 Range 22
S. LINE OF THE S.W. 1/4

I hereby certify that on the 6 day of FEB., 1964, I found the described corner which was evidenced by 4" X 4" CONCRETE MONUMENT

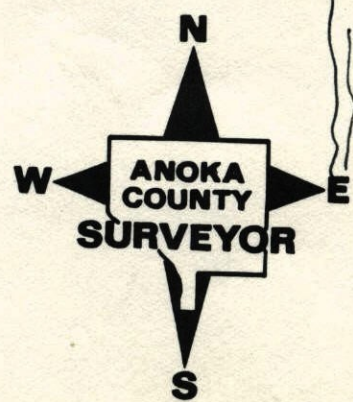
and I further certify that to perpetuate the location of said corner, I did, at the exact location thereof, place a permanent marker consisting of CAST IRON MONUMENT
SIGN & POST ON NORTH SIDE

which reference or witness monuments are located in the manner following:



N.A.D.	1983	Co-ordinates
County	Project	Co-ordinates
Northing	142967.0325	
Easting	534457.3253	

Revised date	Revised date	Revised date
1.3.97		



WC ON S. LINE OF SW 1/4 SEC. 19 T31 R22

RETIRED CAST IRON MONUMENT SIGN +
POST ON NORTH SIDESHIRLEY
KAYS
BAR

PARRING

H. LARSON
B. KLEINZ
J. SIMMER
1-3-97NW
12" GLM

272.89

122.70

63.13

DITCH

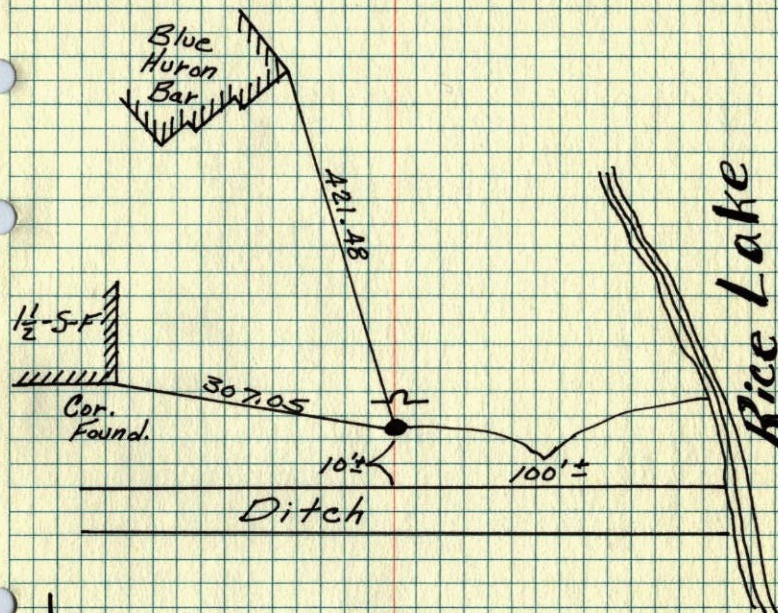
RICE

LAKE

NW
WILLOWNW
20" TWIN
WILLOW

M.C. On South Line SW 1/4

Sec 19 - T31 - R22

Found Concrete Monument From Ties,
Replaced With Cast Iron Monument.
Put Sign And Steel Post On North
Side. Monument Flush.

Sept. 20, 1974

H. Larson
R. Guetzko
J. Beutcher
Tape #14
Temp. 45°

FOUND May 25, 1977	TIE CHECK
R. SANNEBUD	8-14-80
G. ADAMS	P. ROSS
S. BRIEN	P. HORNBY

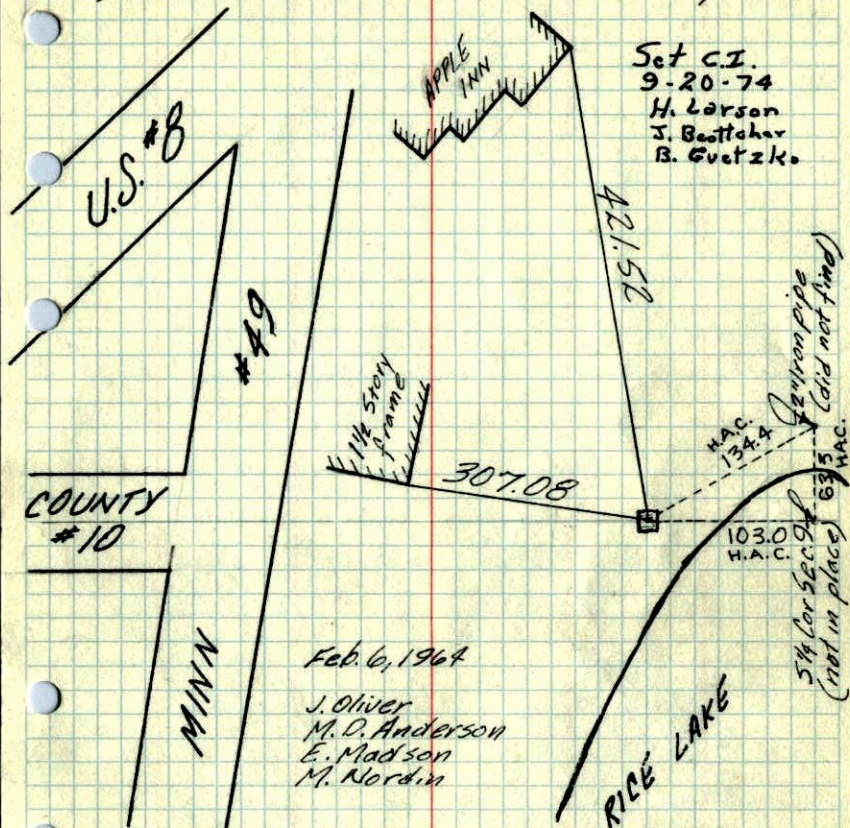
ROLAND W. ANDERSON
COUNTY SURVEYOR
ANOKA COUNTY, MINNESOTA

TEMPERATURE CORRECTED
AND HORIZONTALLY
TAPED MEASUREMENTS

1974 105

M.C. on S. line S.W. 1/4 Sec. 19-31-22

Found 4"x4" Concrete Monument up 0.5'



Set C.I.
9-20-74
H. Larson
J. Beutcher
B. Guetzko

Feb. 6, 1964
J. Oliver
M. D. Anderson
E. Madson
M. Nordin

Could not find
8/21/69
DP

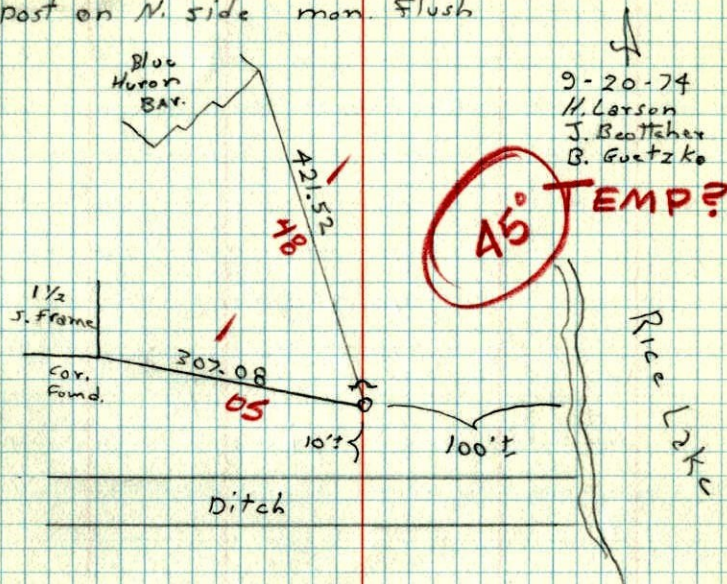
Could not find
7-3-73
BO

ROLAND W. ANDERSON
COUNTY SURVEYOR
ANOKA COUNTY, MINNESOTA
**TEMPERATURE CORRECTED
AND HORIZONTALLY
TAPED MEASUREMENTS**

1974

M.C. on S Line SW 1/4 Sec. 19 T31 R22

Found conc. monument from tree, replaced
with cast iron monument put 5' high & steel
post on N. side man. flush



9-20-74
H. Larson
J. Beutcher
B. Guetzko

45° TEMP?

1 1/2
J. Frame
Corr.
Found.

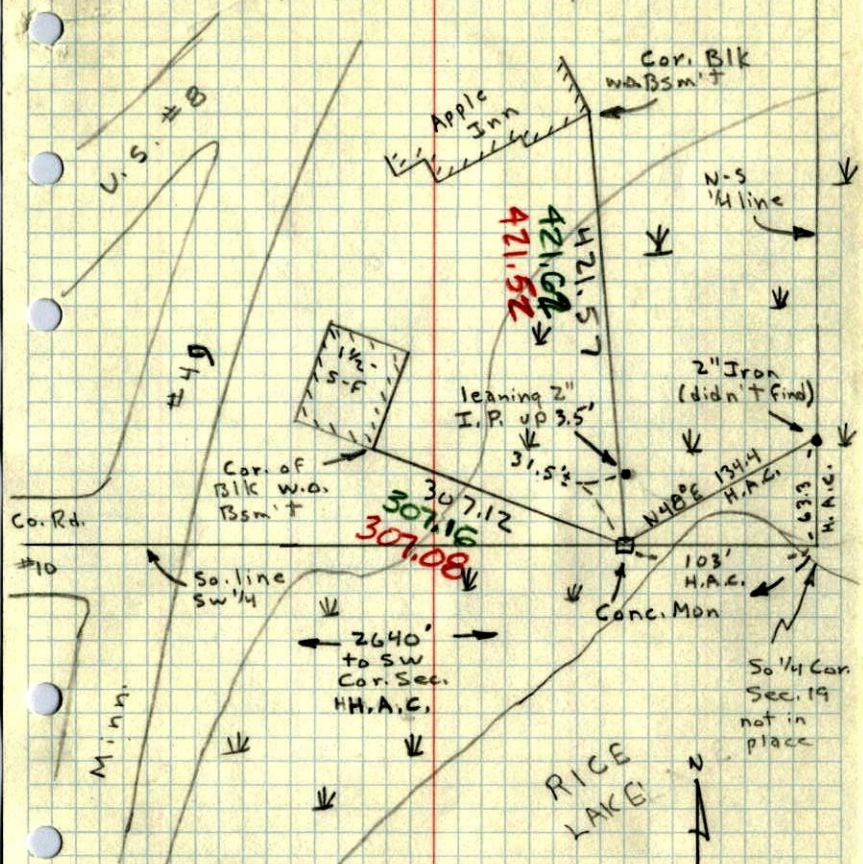
Ditch

Rice Lake

1964

M.C. on So. line SW 1/4 Sec. 19, T31, R22

Found 4" Sq. Conc. Mon. up 0.5'.



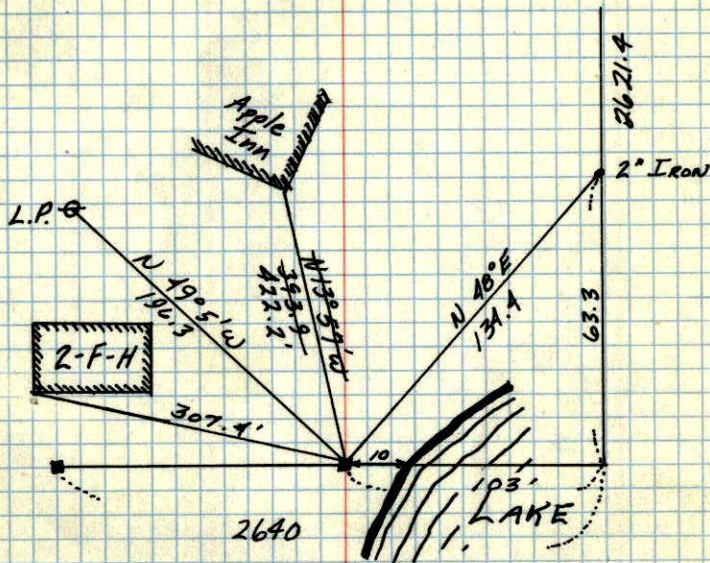
TEMP. & TAPE
LORR. IN RED

6 Feb 64
30 #2
J. Oliver
M.D. Anderson
E. Madson
M. Nordin

1944 36

M.C. S. line of Sec. 19, T31, R22

CONC. MON. 4" up.



(H.A.C. set the M.C. on S. line of
Sec. 19, 31-22 by producing So. line of Sec. 19
from SW. Corner through stake on line from 1918 Survey
From: H.A.C. Tie in Reg. of Deeds

A.C.H.D.
July, 1959
DEC. 30, 1944
CARTWRIGHT