

CERTIFICATE OF LOCATION OF GOVERNMENT CORNER

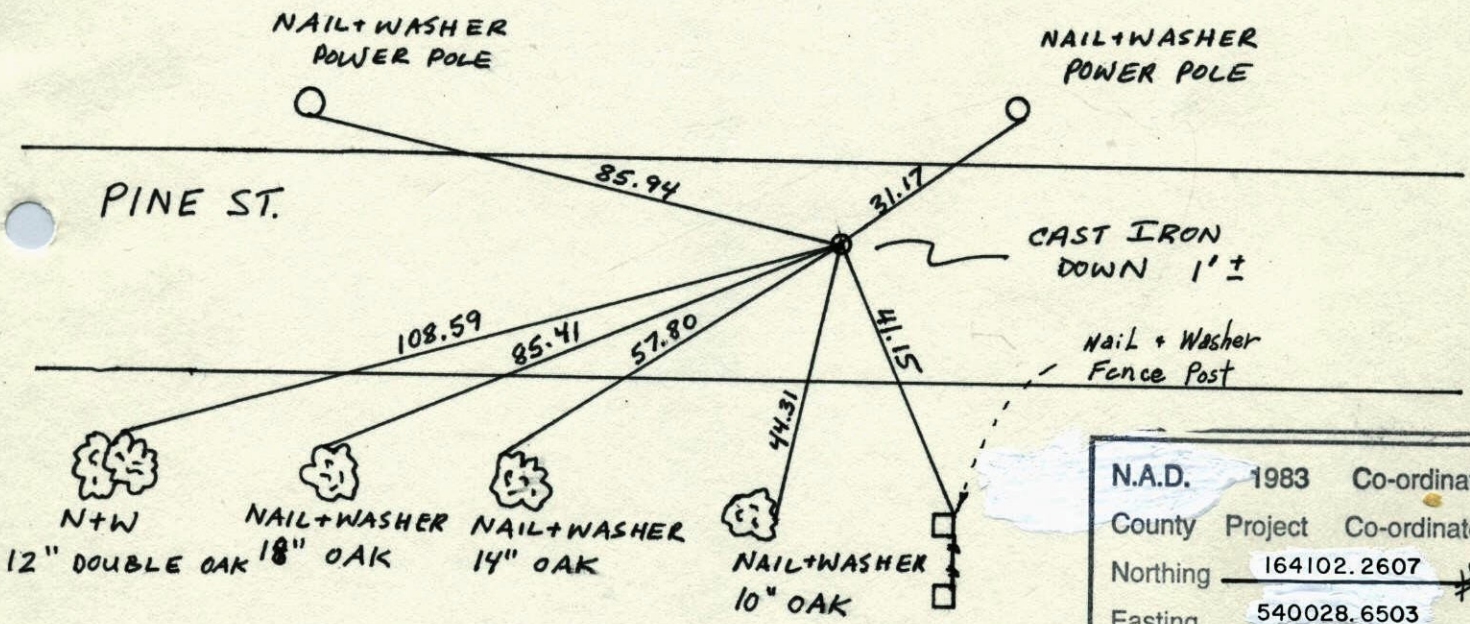
County of Anoka State of Minnesota

NORTH QUARTER Corner of Sec. 5 Township 31 Range 22

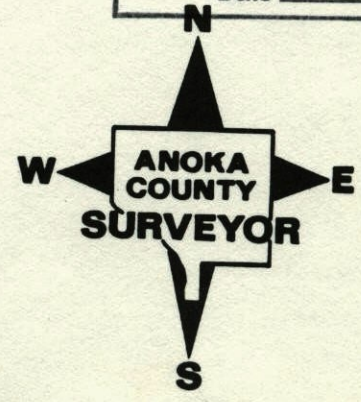
I hereby certify that on the 17 day of MAY, 19 63, I found the described corner which was evidenced by CONCRETE MONUMENT

and I further certify that to perpetuate the location of said corner, I did, at the exact location thereof, place a permanent marker consisting of CAST IRON MONUMENT

which reference or witness monuments are located in the manner following:



N.A.D.	1983	Co-ordinates
County	Project	Co-ordinates
Northing	164102.2607	#39
Easting	540028.6503	
State Plane Co-ordinates		
Y	_____	
X	_____	
Date	_____	



Revised date	Revised date	Revised date
7-14-86		
8-30-91		
6-19-96		
5-2-98		

1973 11

N 1/4 COR. SEC. 5, T31, R22

Found 4" Sq. CONCRETE Mon. down 0.2'

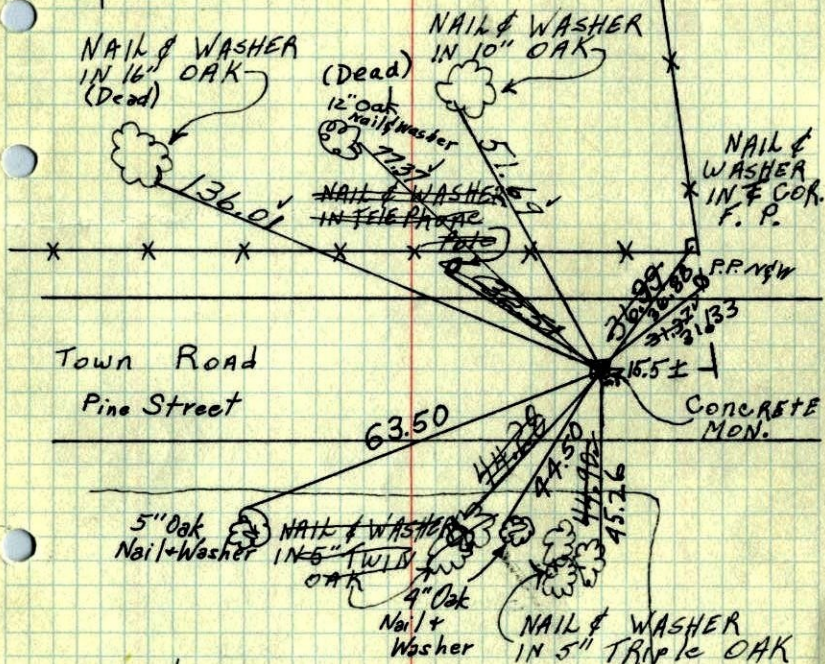
Set 3/4" Iron Pipe on North side

17 May 63

J. OLIVER

M. P. ANDERSON

Set Cast Iron Mon. in place of
Concrete Mon. Mon. Down 0.5'



Woods
Tie Check
Aug. 12, 1969
R. A. Olson
R. Brien

Tie Check
June 14, 1973
B. Olson
D. Brien
D. Farmer

TEMPERATURE CORRECTED ROLAND W. ANDERSON
AND HORIZONTALLY
TAPED MEASUREMENTS
COUNTY SURVEYOR
ANOKA COUNTY, MINNESOTA

1969 11

N 1/4 COR. SEC. 5, T31, R22

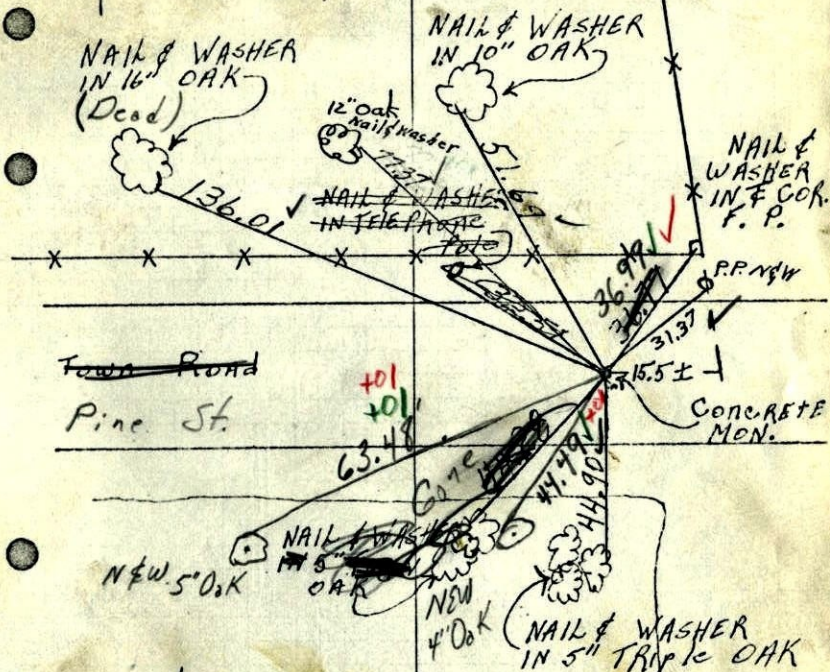
Found 4" Sq. CONCRETE Mon. down 0.2'

Set 3/4" Iron Pipe on North side

17 May 63

J. OLIVER

M. P. ANDERSON



8-12-69
Tape #5 ✓
90°
R. A. Olson
R. Brien

ROLAND W. ANDERSON
COUNTY SURVEYOR
ANOKA COUNTY, MINNESOTA

N 1/4 COR. SEC. 5, T31, R22

Found 4" Sq. Concrete Mon. down ~~0.2~~ 0.05 ±

Set 3/4" Iron Pipe on North side

17 May 63
J. OLIVER
M.D. ANDERSON

NAIL & WASHER
IN 16" OAK

12" Oak
N.W.

NAIL & WASHER
IN 10" OAK

NAIL & WASHER
IN 10" OAK

NAIL & WASHER
IN F. COR.
F. P.

P.P. N.W.

Town Road Gone

CONCRETE
MON.

NAIL & WASHER
IN 5" TWIN
OAK

NAIL & WASHER
IN 5" TRIPLE
OAK

Woods

Tie check
June 18, 1965
M.D. Anderson
J. Dunlop 720
#5

TEMPERATURE CORRECTED
AND HORIZONTALLY
ADJUSTED MEASUREMENTS
ROLAND W. ANDERSON
COUNTY SURVEYOR
ANOKA COUNTY, MINNESOTA

1965

1963

N 1/4 Cor. Sec. 5, T31, R22

Found 4" Sq. Concr. Mon. down 0.2'

Set 3/4" I.P. on No. Side.

N 17 May 63

67 #2

J. Oliver
M.D. Anderson

N 1/4 in 16"
Oak

N 1/4 in 10"
Oak

N 1/4 in
F. COR.
F. P.

N 1/4 in
T. P.

136.01

435.99
+1.02

51.69

51.01

51.01

36.76

32.51

44.28

44.27

44.90

44.89

44.89

44.89

44.89

44.89

44.89

44.89

44.89

44.89

44.89

44.89

44.89

44.89

44.89

44.89

44.89

Town Road

CONC. MON.

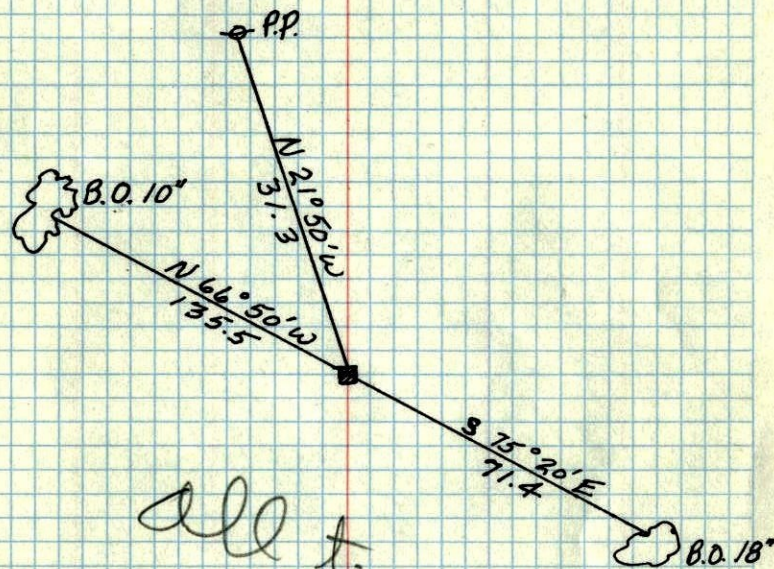
N 1/4 in 5"
Twin Oak

N 1/4 in 5"
Triple Oak

Woods

1943 42

N $\frac{1}{4}$ SEC. 5, T 31, R 22
CONC. MON.



all trees gone
3/19/62
GO

SEPT. 6, 1943
Cartwright