

CERTIFICATE OF LOCATION OF GOVERNMENT CORNER

County of Anoka

State of Minnesota

East 1/4 Corner of Sec. 26 Township 31 Range 22

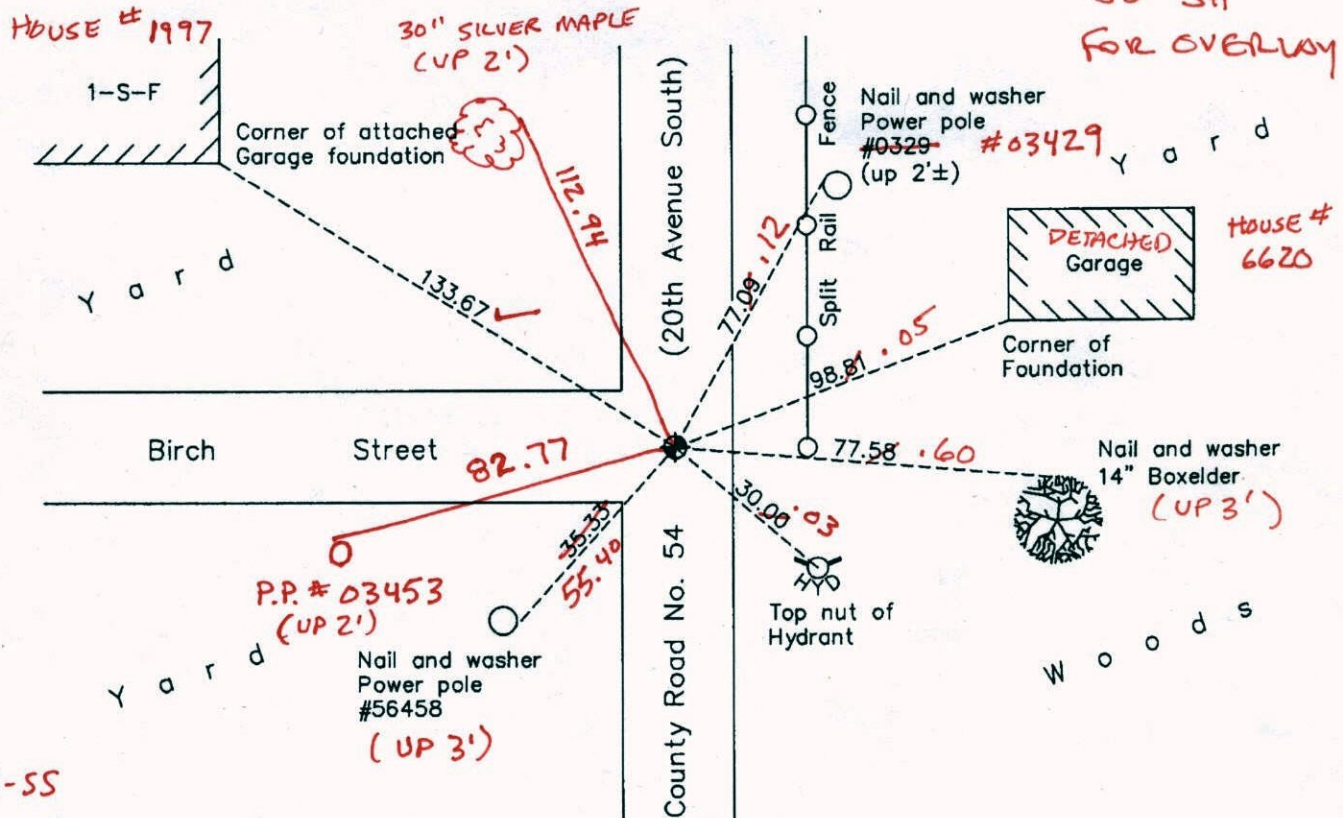
On the 13th day of August, 1964, the described corner was evidenced by a 1/2" rod
from Jim Kurth ties

and to perpetuate the location of said corner, at the exact location thereof, a permanent marker
was placed consisting of a cast iron monument

AND on the 14th day of July, 2010, said permanent marker was found flush with the
surface and the ties were updated (1' ± E. of E)

Updated reference ties are as shown below.

LOOSENED TOP 5-10-11
JS SH
FOR OVERLAY

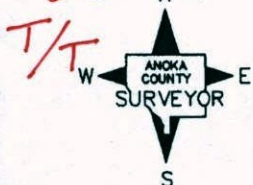


BK-SS
RAISED/RETIED
6-20-11
T/T

(RECESSED 0.10' FROM
RD. SURFACE)

N.A.D. 1983 Coordinates
(1996 Adjustment)

County Project Coordinates	
Northing	140340.9511
Easting	558297.0748
Date	3/25/98



Revision Date

2/07/11

I hereby certify that this United States public land survey monument record is correct and complete to the best of my knowledge and belief.

Larry D. Holium Date 2/07/11

Larry D. Holium, Anoka County Surveyor

Minnesota License Number 18165

CERTIFICATE OF LOCATION OF GOVERNMENT CORNER

County of Anoka

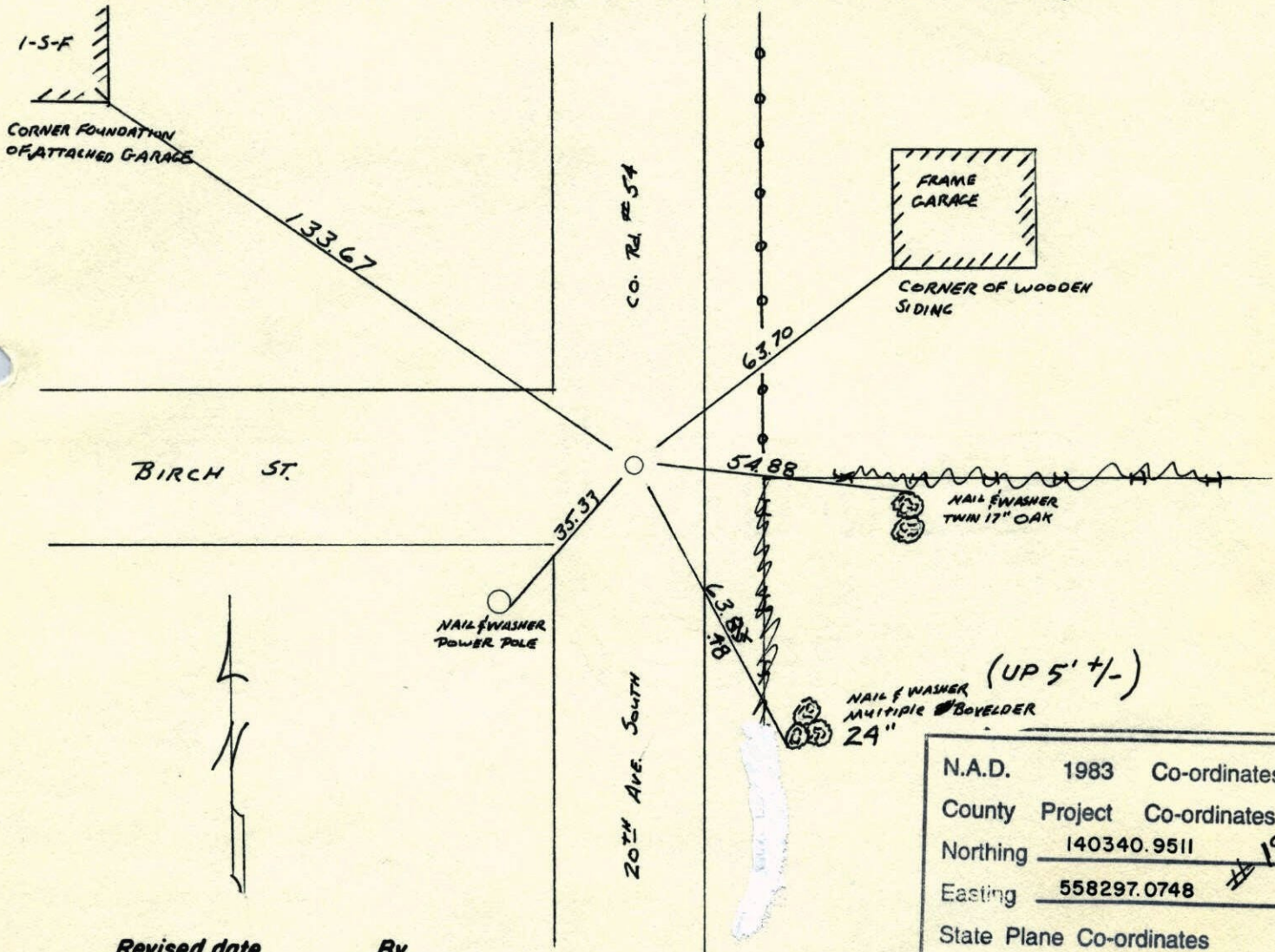
State of Minnesota

EAST QUARTER Corner of Sec. 26 Township 31 Range 22

I hereby certify that on the 13TH day of Aug, 1964, I found the described corner which was evidenced by 1/2" ROD FROM J.M. KURTH TIES

and I further certify that to perpetuate the location of said corner, I did, at the exact location thereof, place a permanent marker consisting of CAST IRON MONUMENT

which reference or witness monuments are located in the manner following:



Revised date	By
7-7-86	D. ROSS
8-27-91	
6-24-96	
3-25-98	

Minnesota State Plane Coordinates
 South Zone
 Y _____
 X _____
 Date _____

N.A.D.	1983	Co-ordinates
County	Project	Co-ordinates
Northing	140340.9511	19
Easting	558297.0748	#
State Plane Co-ordinates		
Y	_____	
X	_____	
Date	_____	

County Surveyor _____ Date _____
 Registered Land Surveyor No. _____

E $\frac{1}{4}$ Cor. Sec. 26-T31-R22

Found $\frac{1}{2}$ " Reinforcing rod down 0.4' from Jim Kurth's ties.

Aug. 13, 1964

J. Oliver

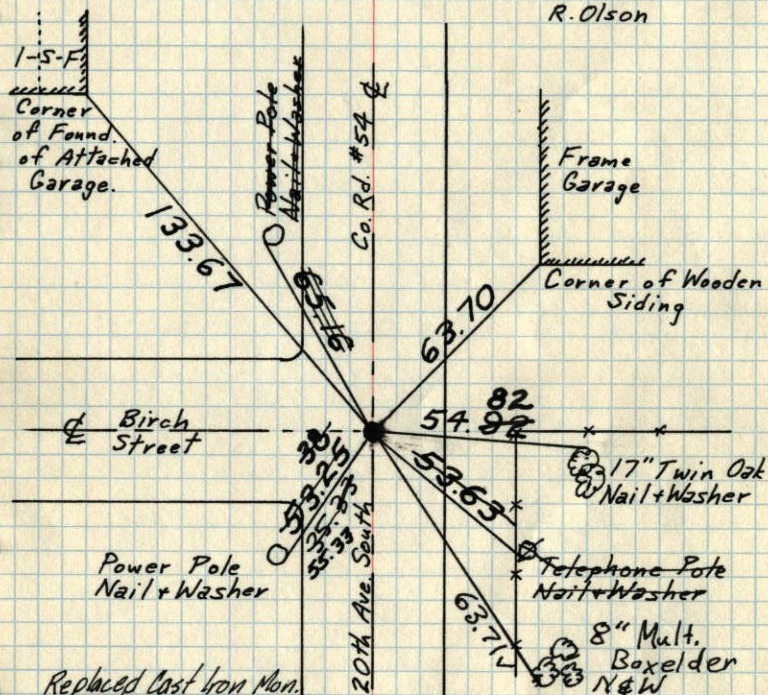
Found no iron rod. Set Cast Iron Monument down 0.4'± from ties.

N. Livgard

Sept. 18, 1969

D. Powell

R. Olson



Replaced Cast Iron Mon.
Sept. 26, 1972
M.D. Anderson
H.V. Carson
all remaining ties O.K.

TIE CHECK
7-28-80
B. STEPHENS
P. ROSS
P. HORNBY

TIE CHECK
JUNE 1, 1977
R. SANDERUD
S. BAKER
J. STEPHENS
G. ADAMS

Tie Check
June 27, 1973
B. Olson
D. Brien
D. Farmer

TEMPERATURE CORRECTED
AND HORIZONTALLY
TAPED MEASUREMENTS

ROLAND W. ANDERSON
COUNTY SURVEYOR
ANOKA COUNTY, MINNESOTA

Const. ties for
(Transit ties)

E $\frac{1}{4}$ Cor. Sec. 27 T31-R22

3-23-79

P.W. Bertleson

M.D. Alune

Plly Cldy. 40°F

Tape # 15



1/2 5.
Frame
and
Brick
NSE

106.70

C.S.A.H. # 10

Birch St.

Iron Pipe

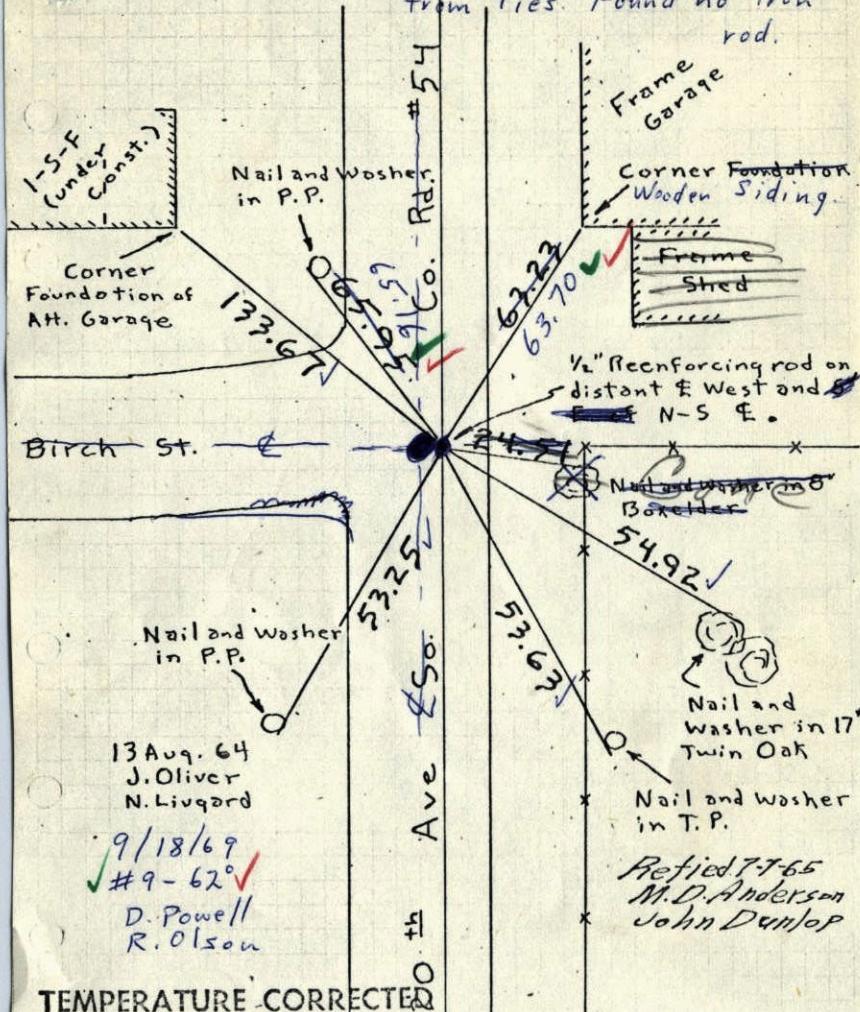
180°-00'-00"

E $\frac{1}{4}$ Cor Sec 27
C.I. Mon.

Iron
Pipe

114
1969
E 1/4 Cor. Sec. 26, T31, R22

Found 1/2" Reinforcing rod down 0.4' from
Jim Kurths ties. Set C.I. Mon. down 0.4'±
from ties. Found no iron rod.



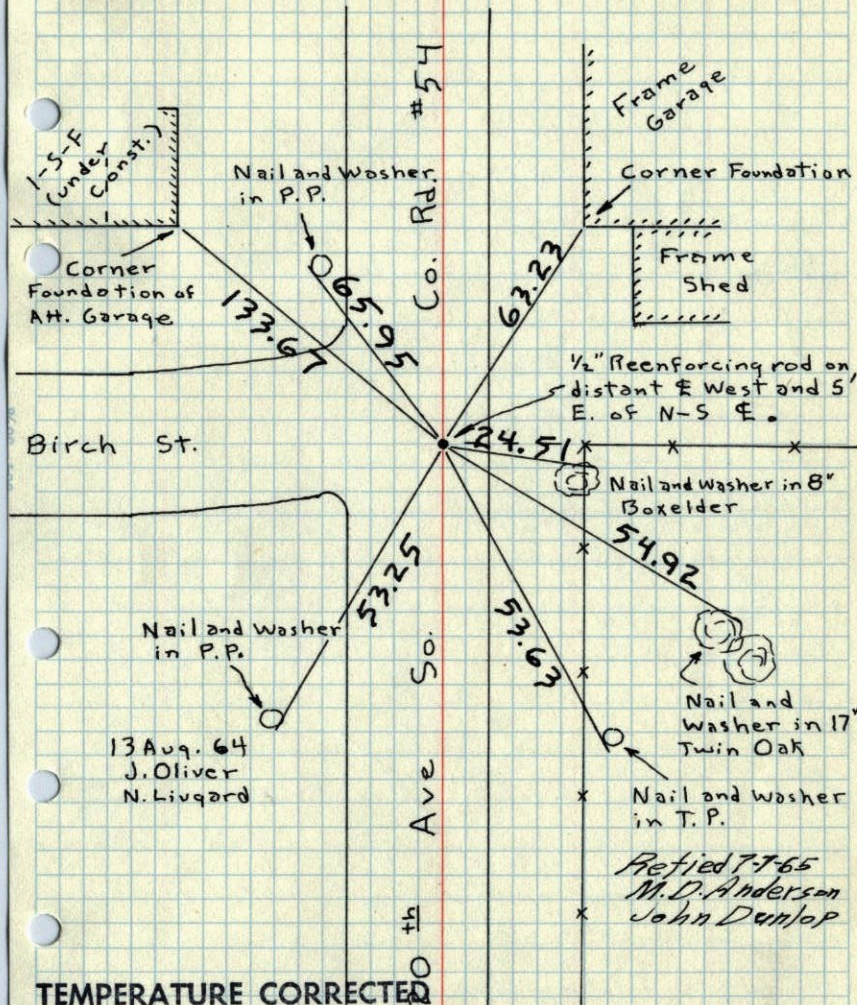
TEMPERATURE CORRECTED
AND HORIZONTALLY
TAPED MEASUREMENTS

ROLAND W. ANDERSON
COUNTY SURVEYOR
ANOKA COUNTY, MINNESOTA

13 Aug. 64
J. Oliver
N. Livgard
9/18/69
#9-62
D. Powell
R. Olson

E 1/4 Cor. Sec. 26, T31, R22

Found 1/2" Reinforcing rod down 0.4' from
Jim Kurths ties.



TEMPERATURE CORRECTED
AND HORIZONTALLY
TAPED MEASUREMENTS

ROLAND W. ANDERSON
COUNTY SURVEYOR
ANOKA COUNTY, MINNESOTA

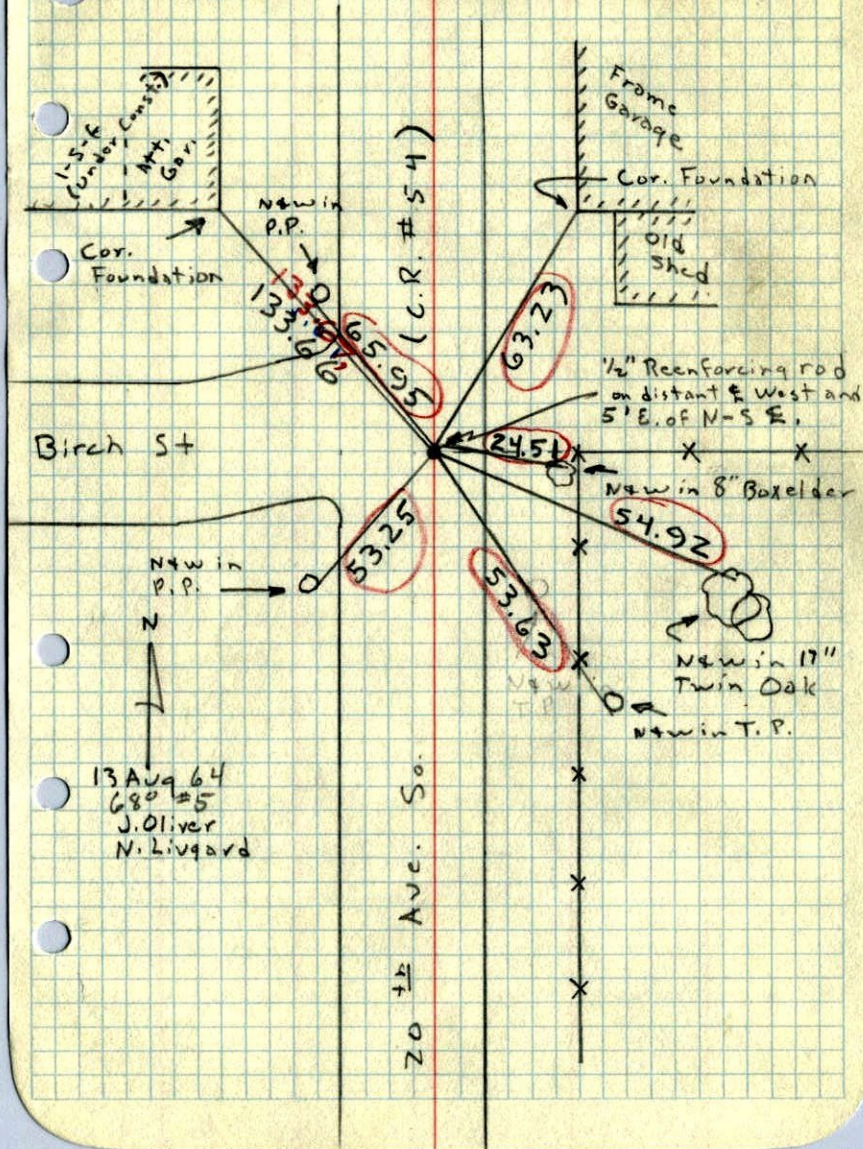
13 Aug. 64
J. Oliver
N. Livgard

1964

E 1/4 Cor. Sec. 26, T 31, R 22

Found 1/2" Reenforcing rod down 0.4'

From Jim Kurth's Tics.

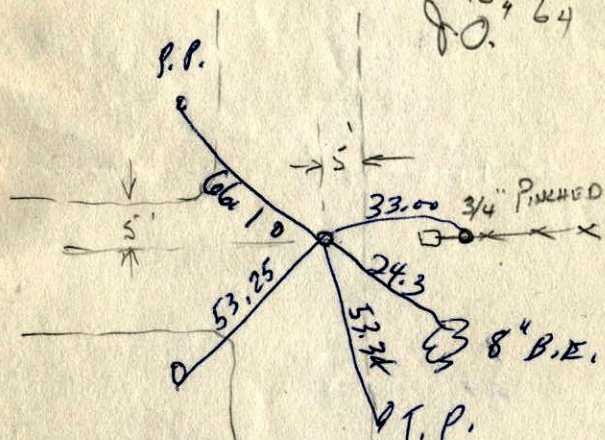


13 Aug 64
680 #5
J. Oliver
N. Livgard

1964

E 1/4 Cor 26-31-22

13 Tied
Aug 64
J.O.



1/2" Re Rod Down 0.4

Jim Kurth