

# CERTIFICATE OF LOCATION OF GOVERNMENT CORNER

County of Anoka

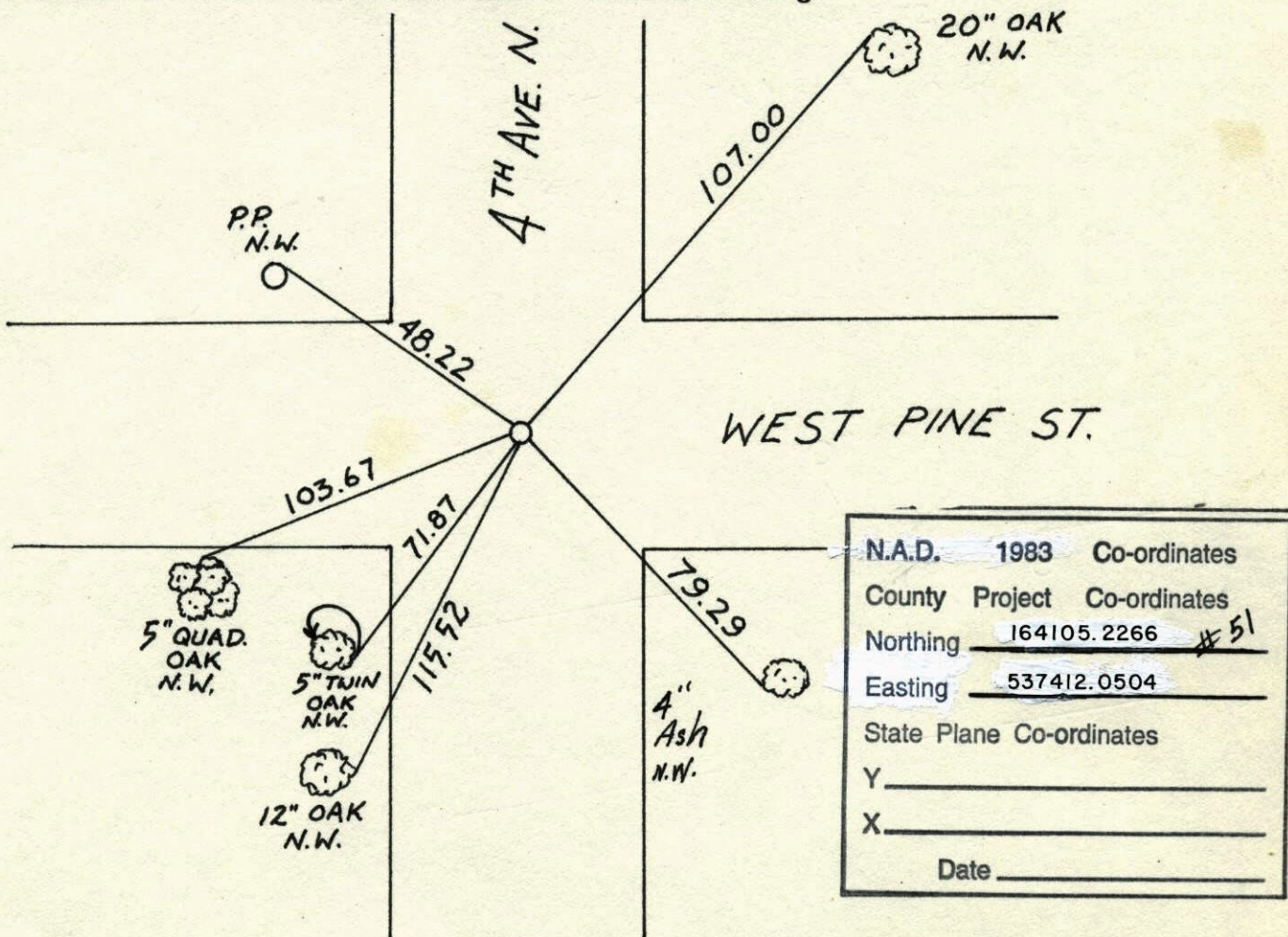
State of Minnesota

NORTHWEST Corner of Sec. 5 Township 31 Range 22

I hereby certify that on the 13 day of MARCH, 1962, I found the described corner which was evidenced by CONCRETE

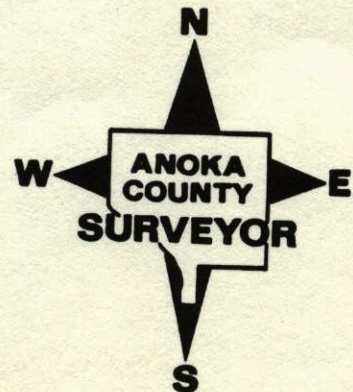
and I further certify that to perpetuate the location of said corner, I did, at the exact location thereof, place a permanent marker consisting of CAST IRON DOWN 1.5' ±

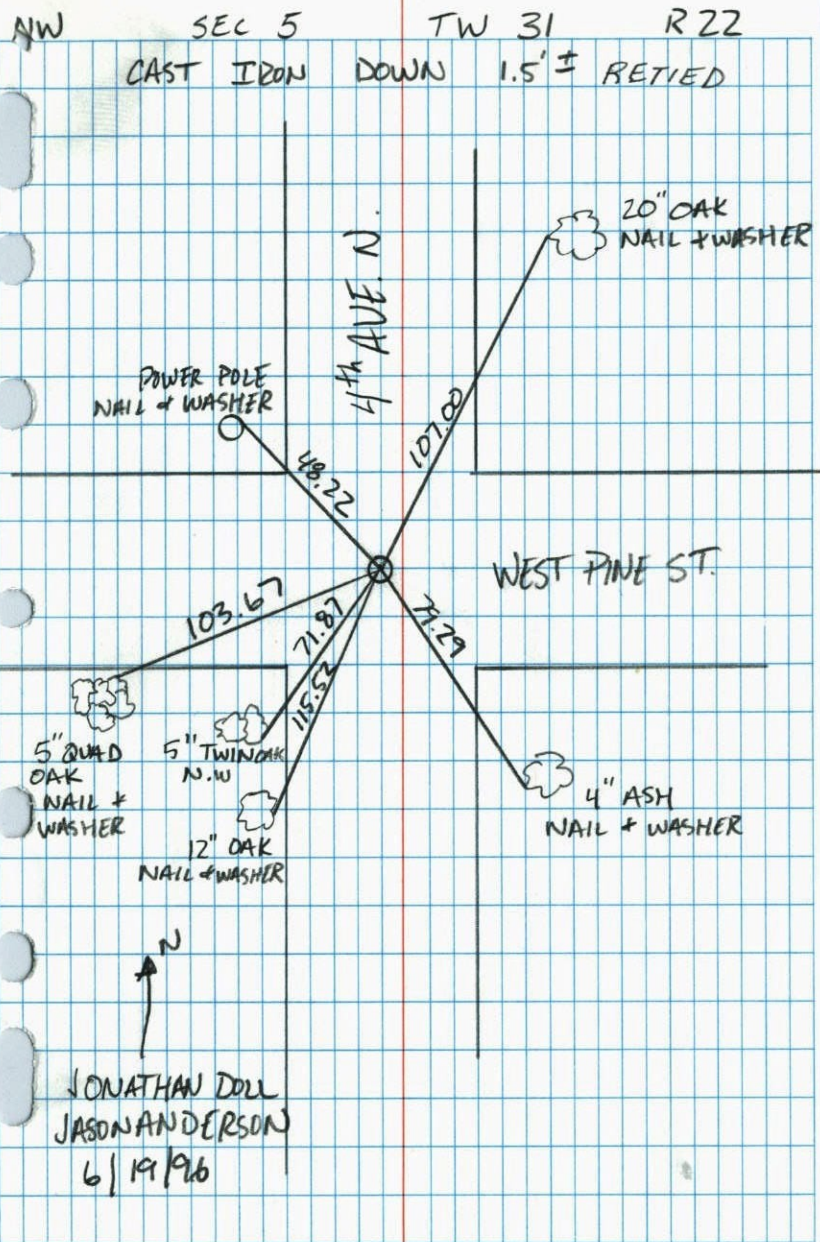
which reference or witness monuments are located in the manner following:



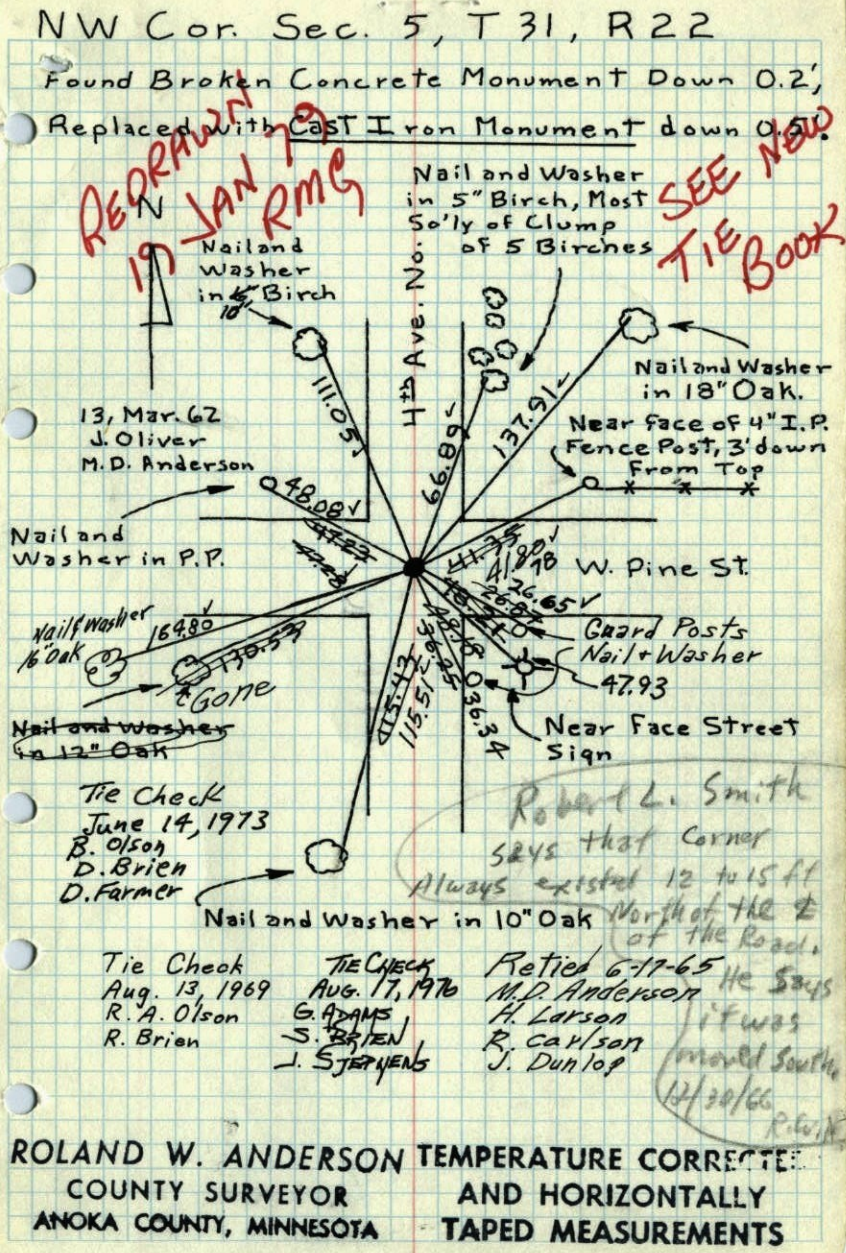
N.A.D.	1983	Co-ordinates
County	Project	Co-ordinates
Northing	164105.2266	# 51
Easting	537412.0504	
State Plane Co-ordinates		
Y	_____	
X	_____	
Date	_____	

Revised date	Revised date	Revised date
6-27-91		
6-19-96		
3-2-98		





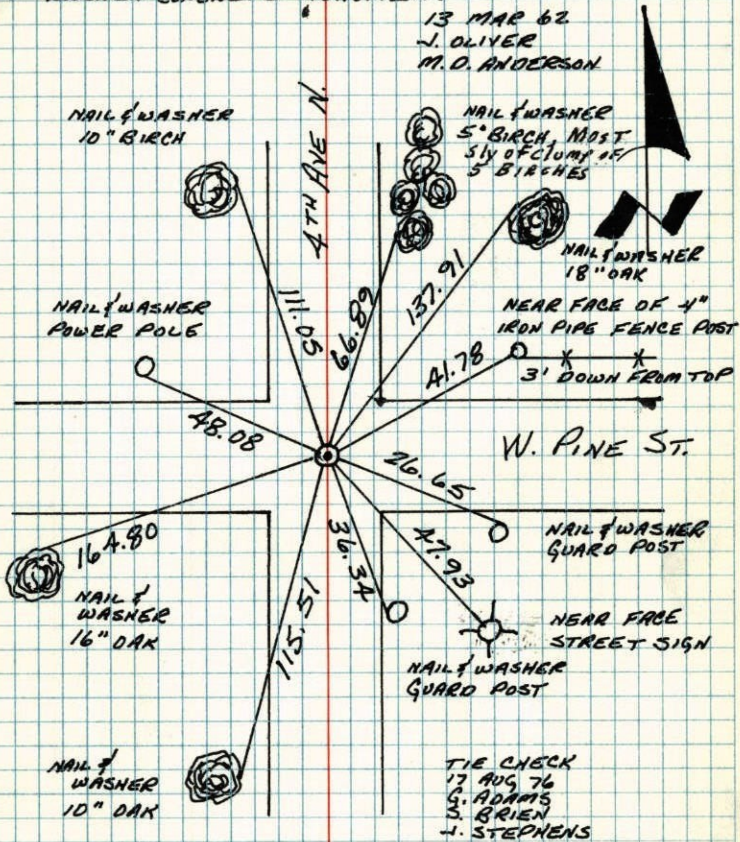
NATIONAL PRINTFAST NO. 446



# N.W. CORNER SECTION 5-T31-R22

SET CAST IRON MONUMENT (DOWN 0.5'±) AT LOCATION OF BROKEN CONCRETE MONUMENT.

13 MAR 62  
J. OLIVER  
M. D. ANDERSON



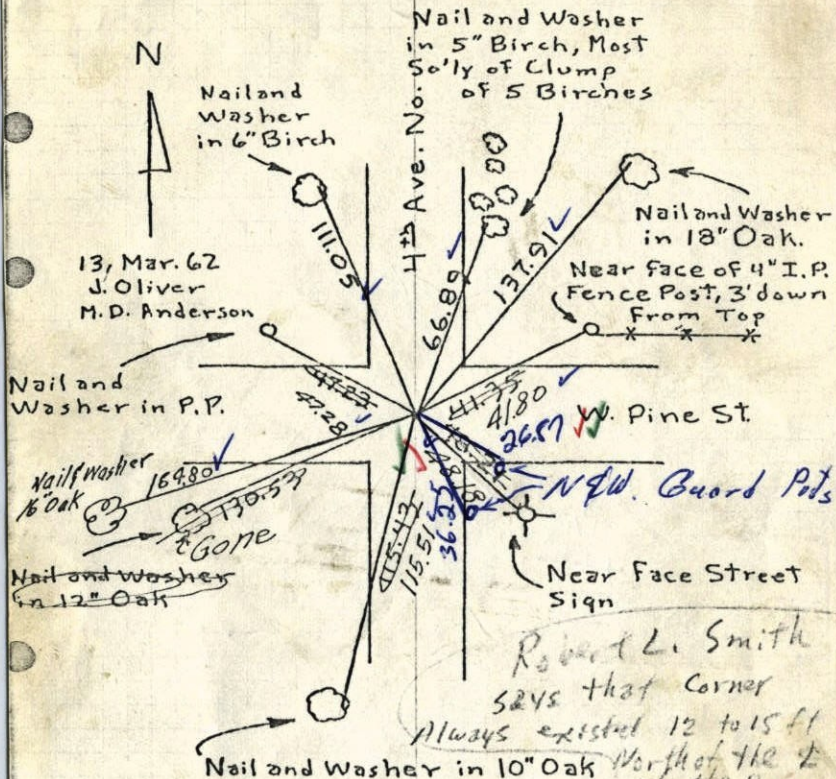
TEMPERATURE CORRECTED AND HORIZONTALLY TAPED MEASUREMENTS

ROLAND W. ANDERSON  
COUNTY SURVEYOR  
ANOKA COUNTY, MINNESOTA

# NW Cor. Sec. 5, T-31, R22

1969/12

Found Broken Concrete Monument Down 0.2';  
Replaced with Cast Iron Monument down 0.5'.



ROLAND W. ANDERSON  
COUNTY SURVEYOR  
ANOKA COUNTY, MINNESOTA

TEMPERATURE CORRECTED AND HORIZONTALLY TAPED MEASUREMENTS

13, Mar. 62  
J. Oliver  
M. D. Anderson

Nail and Washer in 5" Birch, Most S'ly of Clump of 5 Birches

Nail and Washer in 6" Birch

Nail and Washer in 18" Oak.

NEAR FACE OF 4" I.P. FENCE POST, 3' DOWN FROM TOP

W. Pine St.

Nail and Washer in P.P.

Nail and Washer in 16" Oak

Nail and Washer in 12" Oak

Nail and Washer in 10" Oak

NEW Guard Posts

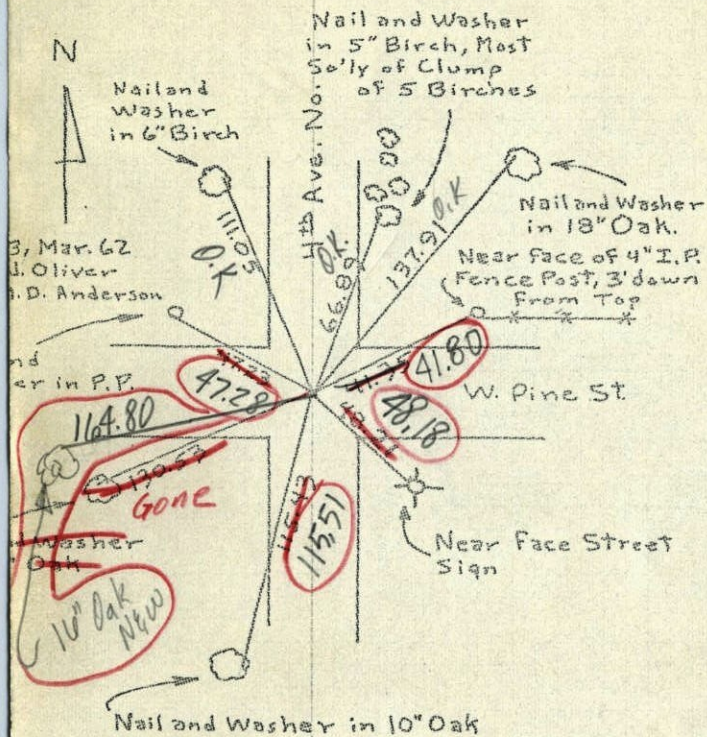
NEAR FACE STREET SIGN

Robert L. Smith  
SAYS that Corner Always existed 12 to 15 ft North of the E. of the Road.  
Retired 6-17-65 He says it was moved South  
M.D. Anderson  
H. Larson  
R. Carlson  
J. Dunlop  
12/30/66

1965

SW  
W Cor. Sec. 5, T 31, R 22

and Broken Concrete Monument Down 0.2',  
placed with Cast Iron Monument down 0.5'.



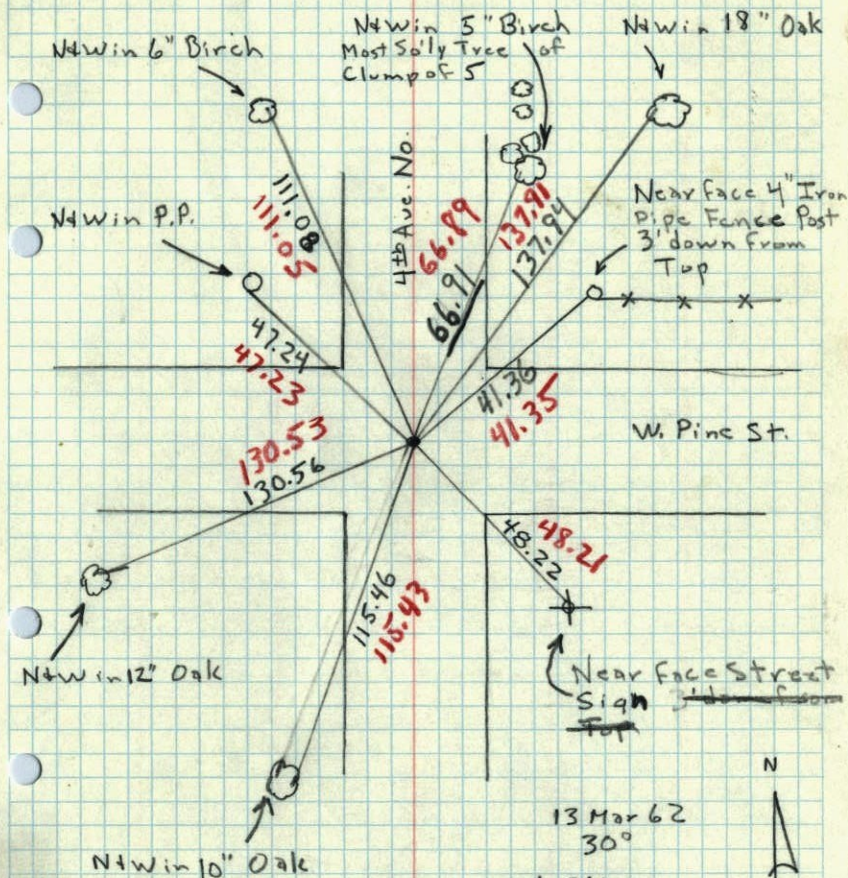
Tie check  
June 17, 1965

M.D.A. 740  
HL 45  
R.C.  
J.D.

AND W. ANDERSON TEMPERATURE CORRECTED  
COUNTY SURVEYOR AND HORIZONTALLY  
LA COUNTY, MINNESOTA TAPED MEASUREMENTS

SW  
W Cor. Sec. 5, T 31, R 22  
1963

and Broken Conc. Mon. Down 0.2'  
Replaced with Cast Iron Mon. down 0.5'

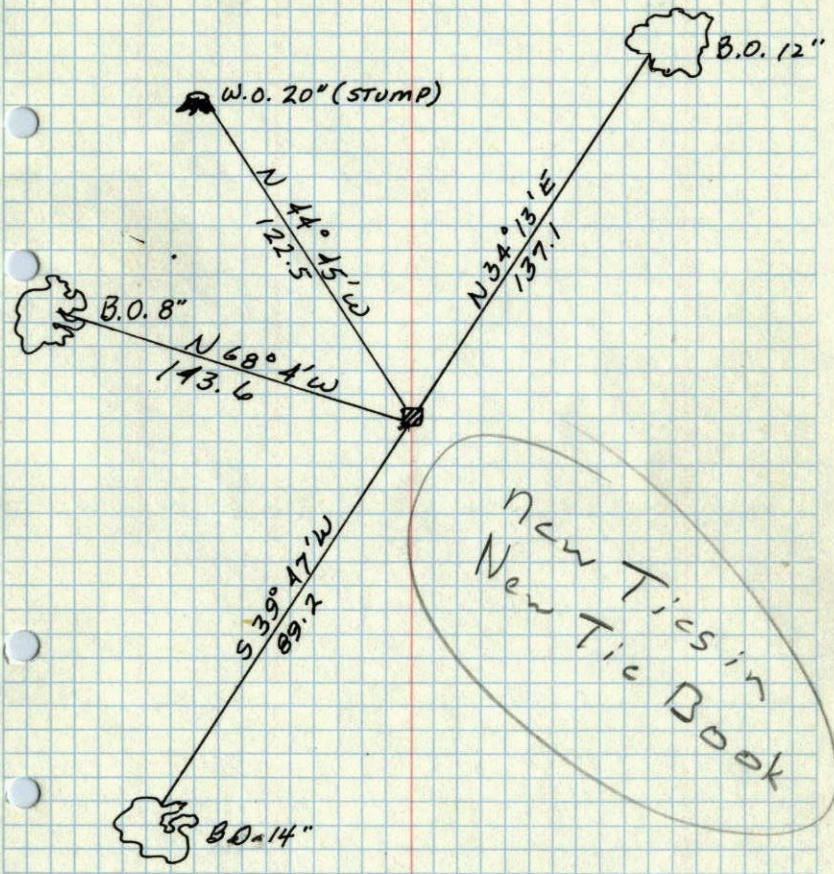


13 Mar 62  
30°

J. Oliver  
M.D. Anderson  
J. Zoller  
B. Sanford

1943/3

N.W. SEC. 5, T31, R22  
CONC. MON.



New Tics in  
New Tic Book

SEPT 6, 1943  
CARTWRIGHT