

CERTIFICATE OF LOCATION OF GOVERNMENT CORNER

County of Anoka

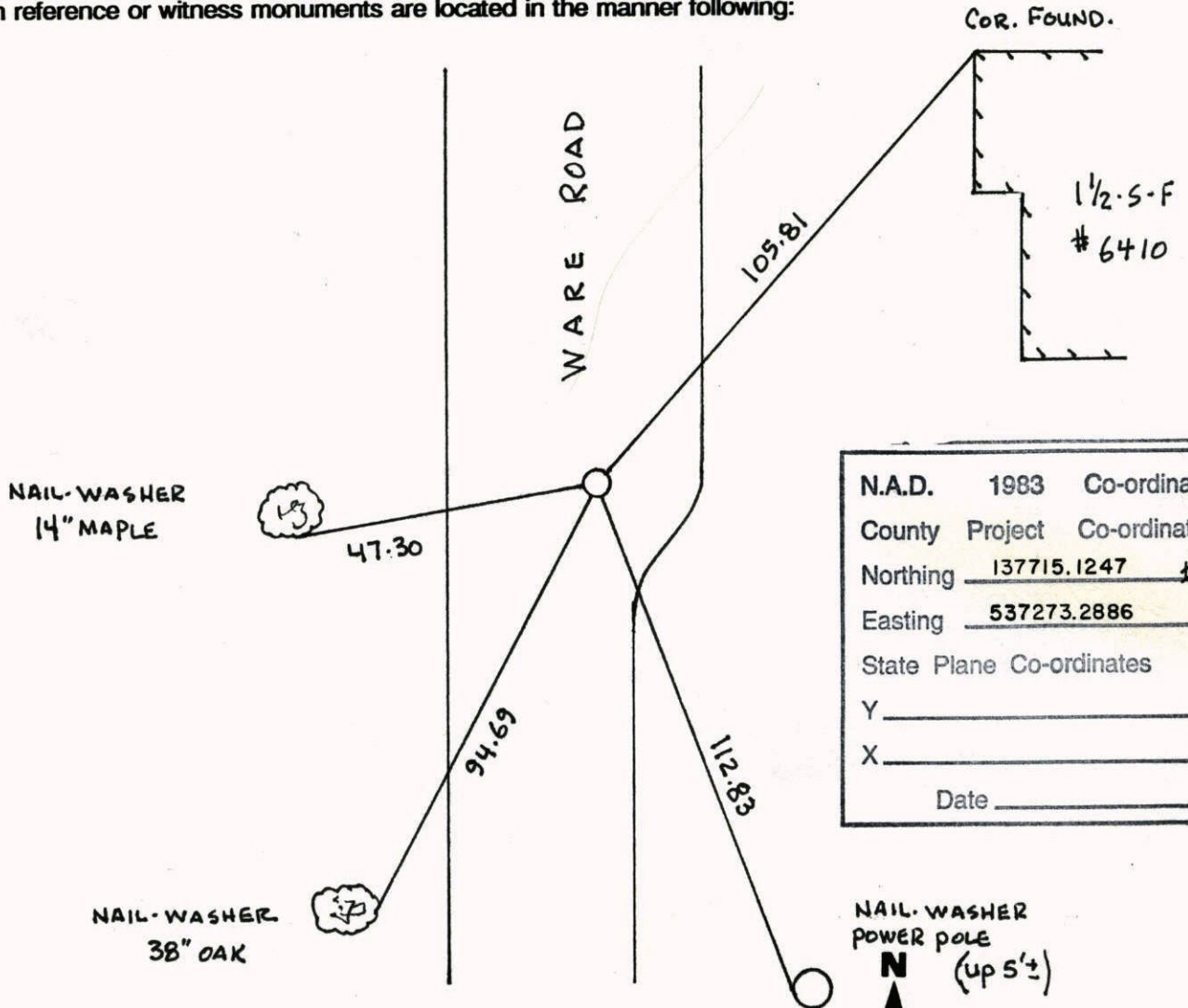
State of Minnesota

NORTHEAST Corner of Sec. 31 Township 31 Range 22

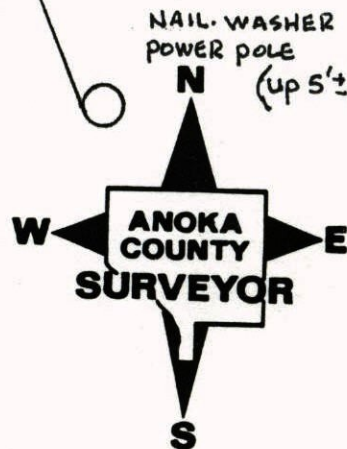
I hereby certify that on the 10TH day of APRIL, 19 62, I found the described corner which was evidenced by CONCRETE MONUMENT

and I further certify that to perpetuate the location of said corner, I did, at the exact location thereof, place a permanent marker consisting of CAST IRON MONUMENT

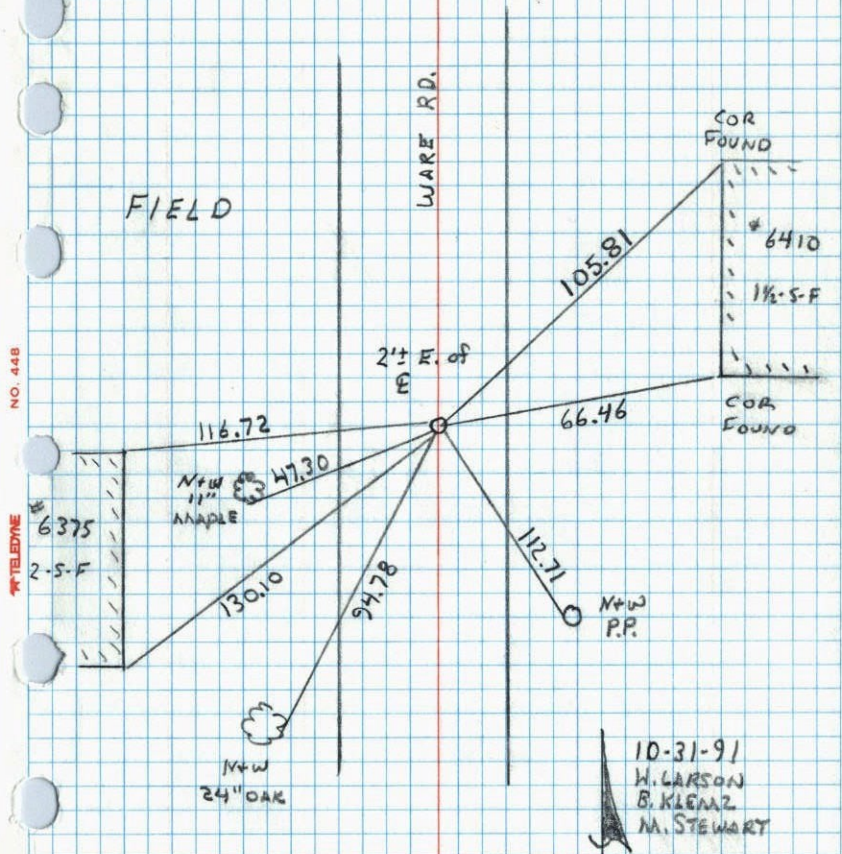
which reference or witness monuments are located in the manner following:



Revised date	Revised date	Revised date
6-8-83		
7-16-86		
8-27-91		
10-31-91		
9-7-93		
6-12-96		
11-5-98		



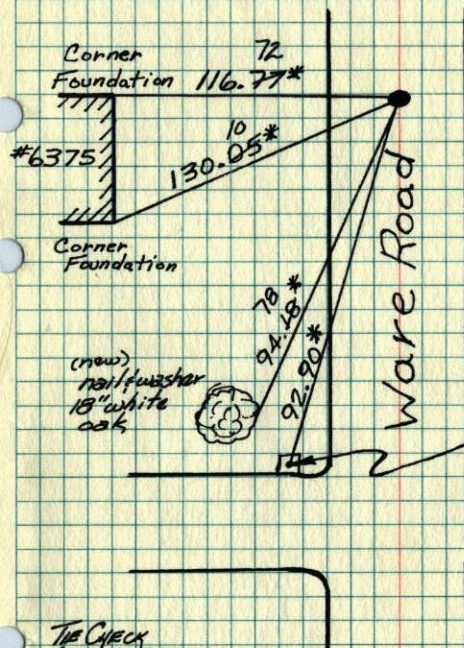
NE CORNER SECTION 31 T31 R22
 RETIRED FOR CONSTRUCTION



10-31-91
 W. CARSON
 B. KLENZ
 M. STEWART

NE Cor. Sec. 31-T31-R22

Reset Monument From Remaining ties*
 Found Old Monument Broken & Leaning.
 Set P.K.'s 2.0' N. & E.



* Old Ties, No
 Temp. Of Tape
 Correction
 Necessary

Dec 3, 1974
 M.D. Anderson
 F. Bertleson
 M. Aune



PUNCH MARK
 1/2" Drill Hole
 In End Of
 Concrete
 Culvert

Concrete Slab over
 7-31-80

TIE CHECK
 JUNE 6, 1977
 R. SANNEQUID
 S. BRIEN
 J. STEPHENS

TIE CHECK
 7-31-80
 B. STEPHENS
 P. ROSS
 P. HORNBY

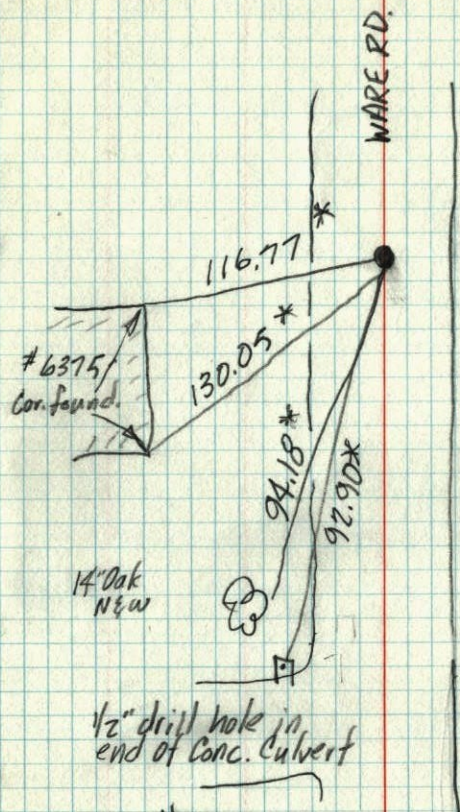
ROLAND W. ANDERSON TEMPERATURE CORRECTED
 COUNTY SURVEYOR AND HORIZONTALLY
 ANOKA COUNTY, MINNESOTA TAPED MEASUREMENTS

1974

N.E. Cor. Sec. 31 - T31 - R22

Reset Mon. from Remaining ties*
found old Mon. Broken & Leaning

* old ties No temp.
or tape corr. necess.



Dec. 3, 1974
M. D. Anderson
P. Barthelsson
M. Aune

126
1973

NE Cor. Sec. 31 - T31 - R22

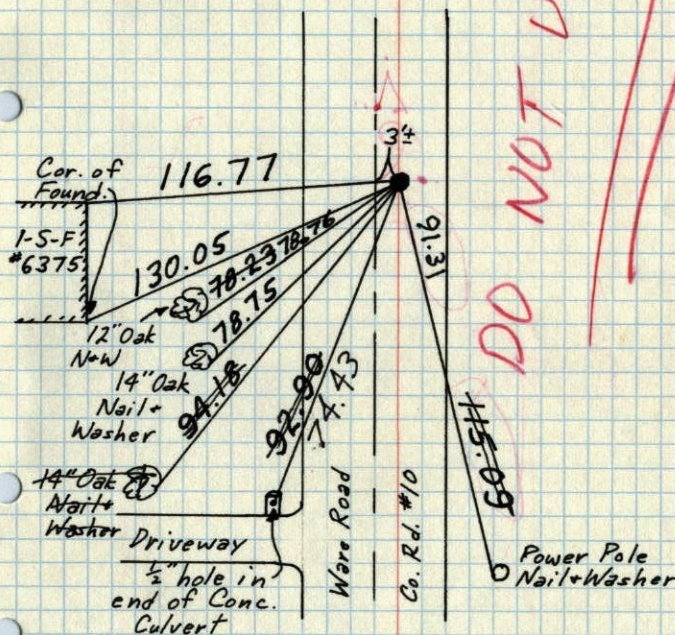
Found 4" Sq. Reinforced Concrete Monument.

Set Cast Iron Monument flush
on top of broken Concrete Mon.
PK's 2.00' North + East.

April 10, 1962
J. Oliver
M. D. Anderson

Aug. 21, 1969
D. Powell
R. Olson
R. Brien

DO NOT USE



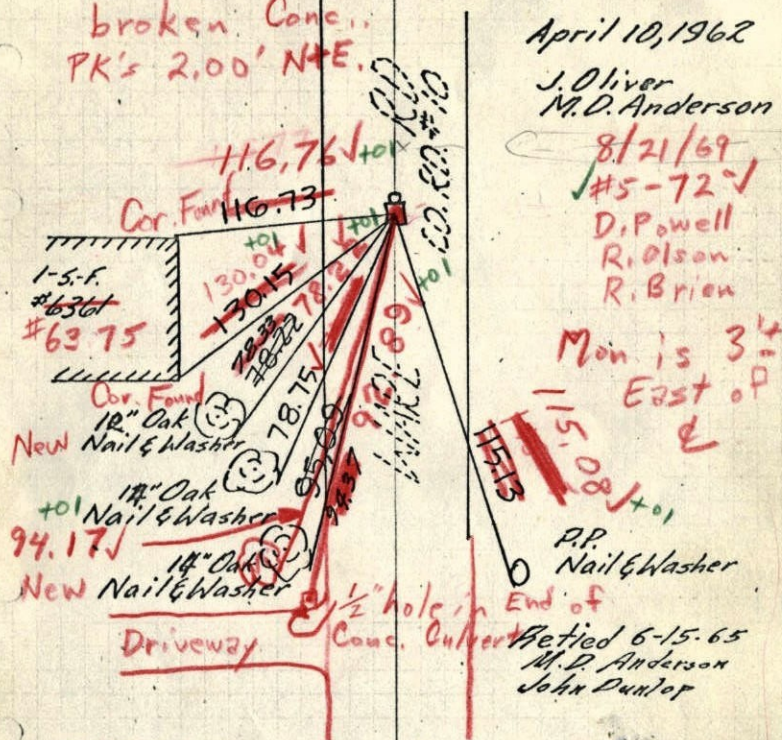
Tie Check
July 3, 1973
B. Olson
D. Brien
D. Farmer

TEMPERATURE CORRECTED ROLAND W. ANDERSON
AND HORIZONTALLY COUNTY SURVEYOR
TAPED MEASUREMENTS ANOKA COUNTY, MINNESOTA

N.E. Cor. Sec. 31-31-22

found 4" Sq. Reinforced Conc. Monument
DOWN 0.5 Ft.
Set 1/2" iron pipe on N. face

Set C.I. Mon. flush on top of
broken Conc.
PK's 2.00' N+E.

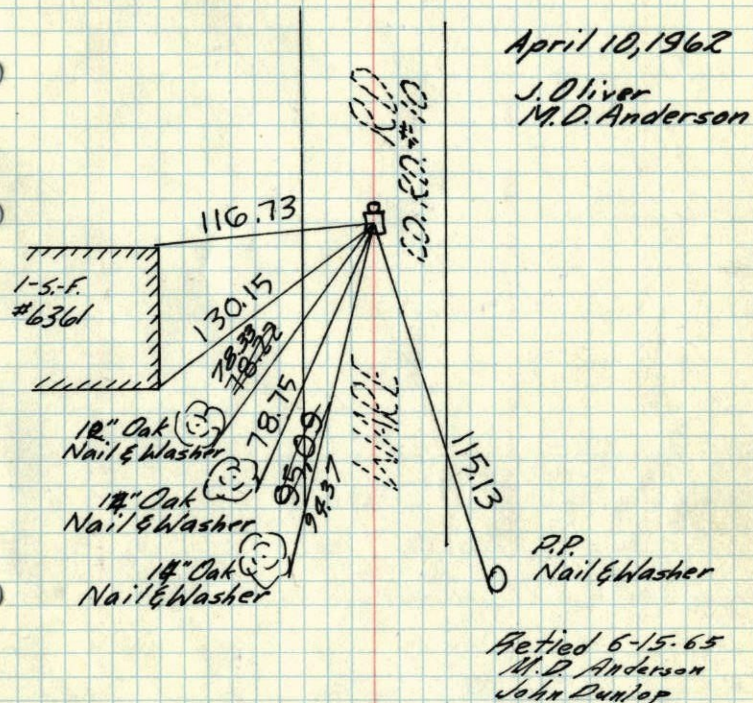


TEMPERATURE CORRECTED
AND HORIZONTALLY
TAPED MEASUREMENTS

ROLAND W. ANDERSON
COUNTY SURVEYOR
ANOKA COUNTY, MINNESOTA

N.E. Cor. Sec. 31-31-22

found 4" Sq. Reinforced Conc. Monument
DOWN 0.5 Ft.
Set 1/2" iron pipe on N. face



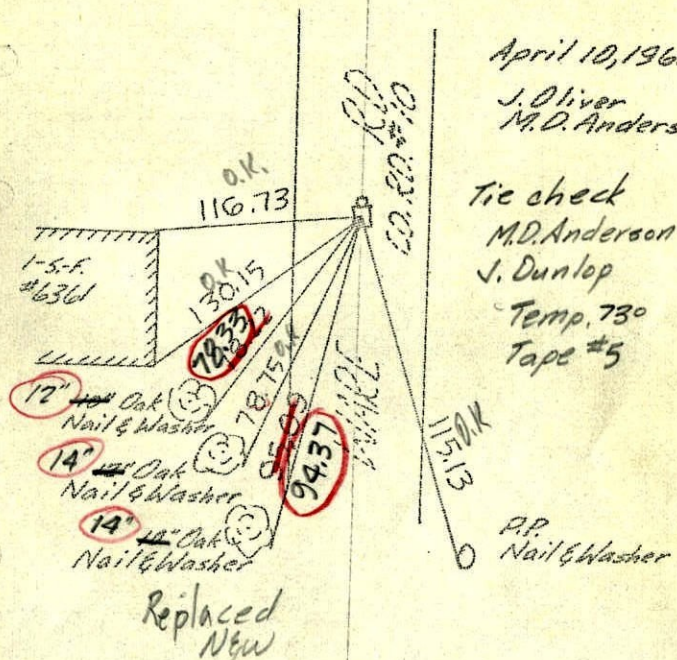
TEMPERATURE CORRECTED
AND HORIZONTALLY
TAPED MEASUREMENTS

ROLAND W. ANDERSON
COUNTY SURVEYOR
ANOKA COUNTY, MINNESOTA

1962

68

N.E. Cor. Sec. 31-31-22
found 4" Sq. Reinforced Conc. Monument
DOWN 0.5 Ft.
Set 1/2" iron pipe on N. face



April 10, 1962
J. Oliver
M.D. Anderson

Tie check
M.D. Anderson
J. Dunlop
Temp. 73°
Tape #5

TEMPERATURE CORRECTED
AND HORIZONTALLY
TAPED MEASUREMENTS

ROLAND W. ANDERSON
COUNTY SURVEYOR
MNOKA COUNTY, MINNESOTA

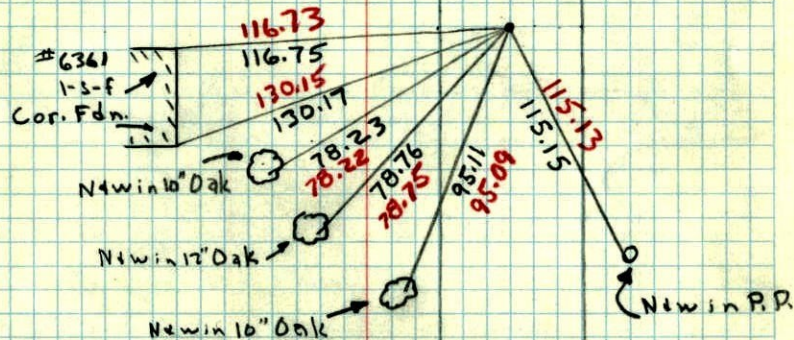
1962

NE Cor. of Sec. 31, T31, R22
4" Sq. Reinforced Conc. Mon. down 0.5'
Drove 3/4" I.P. on No. Side.



10 April, 62
42°
J. Oliver
M.D. Anderson

WARE ROAD
Co. Rd. #10

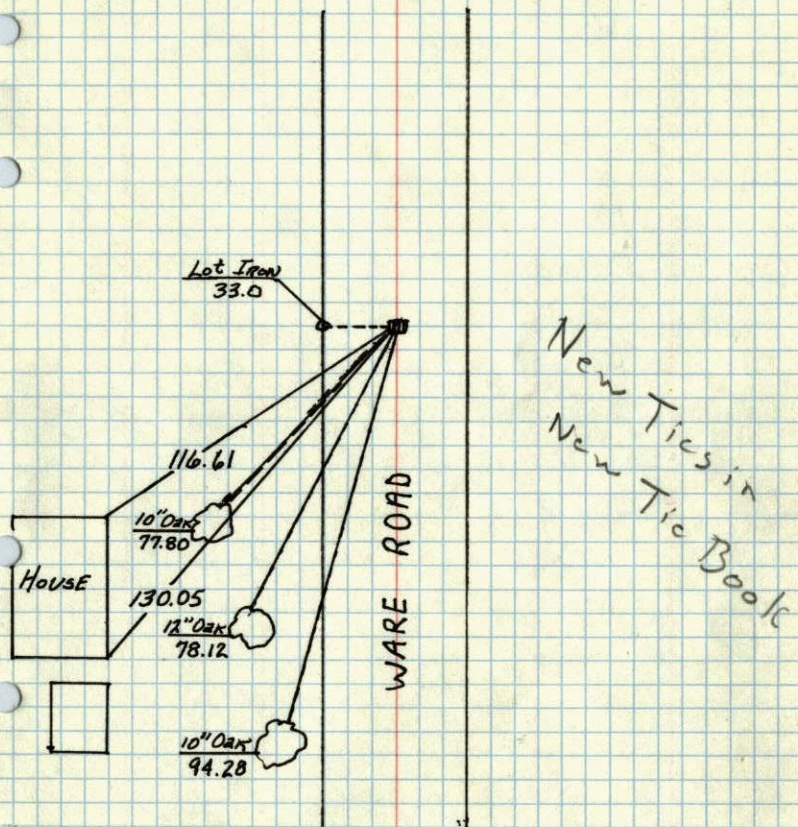


40

N.E. CORNER OF Sec. 31, T31, R22

SQUARE 4" Stone MON. Flush

1959

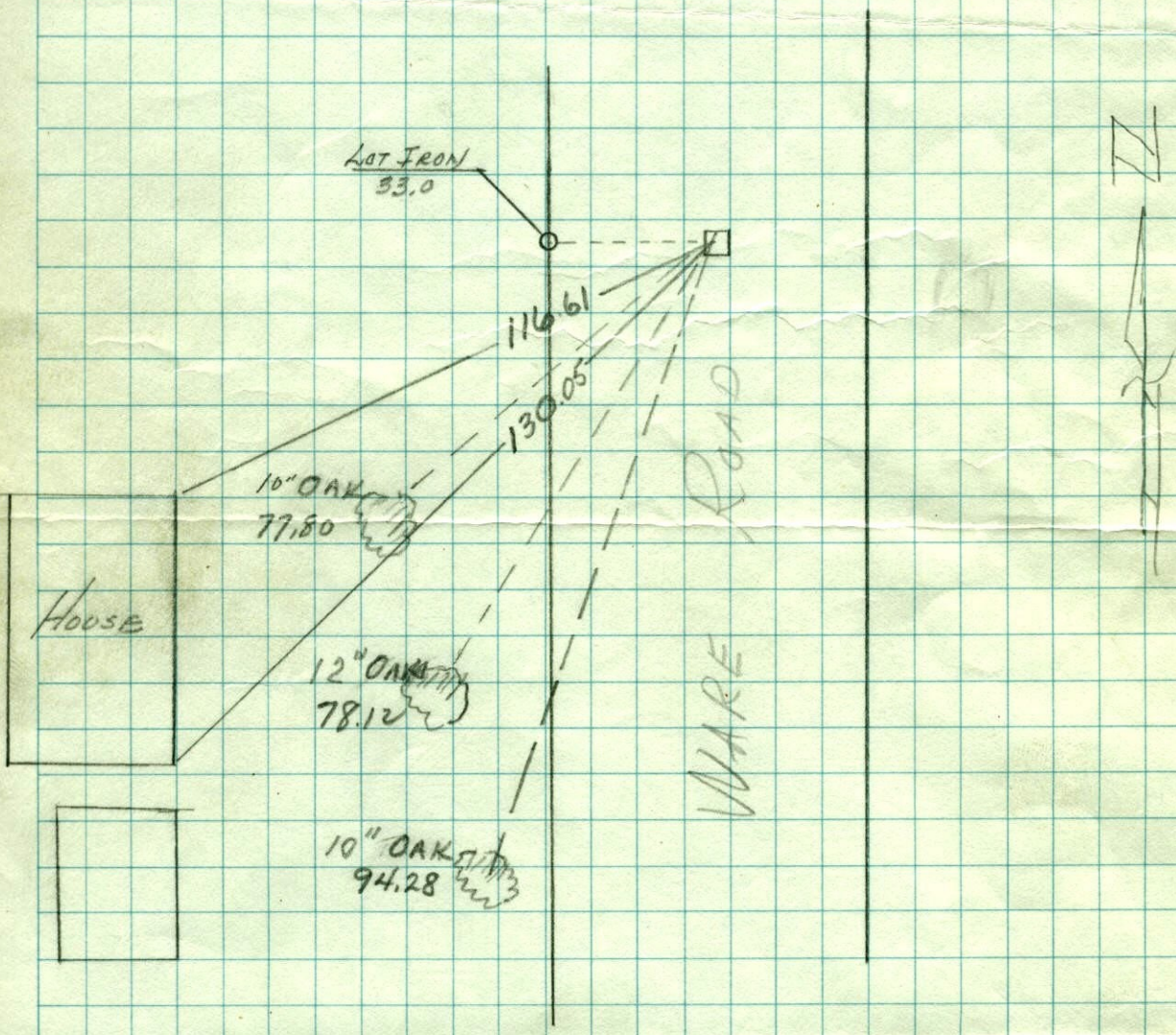


JUNE 4, 1959
N.S.P.

N.E. CORN SEC 31-31-22

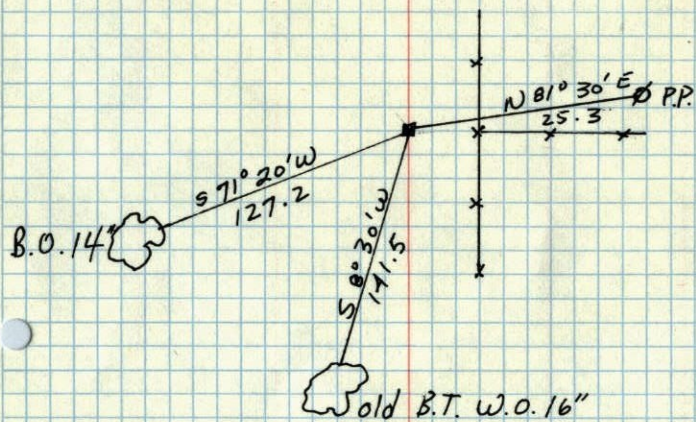
SQUARE 4" STONE MONUMENT - FLUSH

June, 4, 1959
N.S.P.



N.E. SEC. 31, T 31, R 22 1944

CONC. MON. DOWN 6



TIES
GONE

Oct 20, 1944
CARTWRIGHT