

CERTIFICATE OF LOCATION OF GOVERNMENT CORNER

County of Anoka

State of Minnesota

East 1/4 Corner of Sec. 31 Township 31 Range 22

On the 10th day of April, 1962, the described corner was evidenced by a 4" square concrete monument

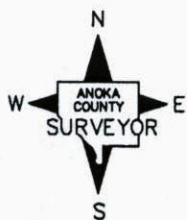
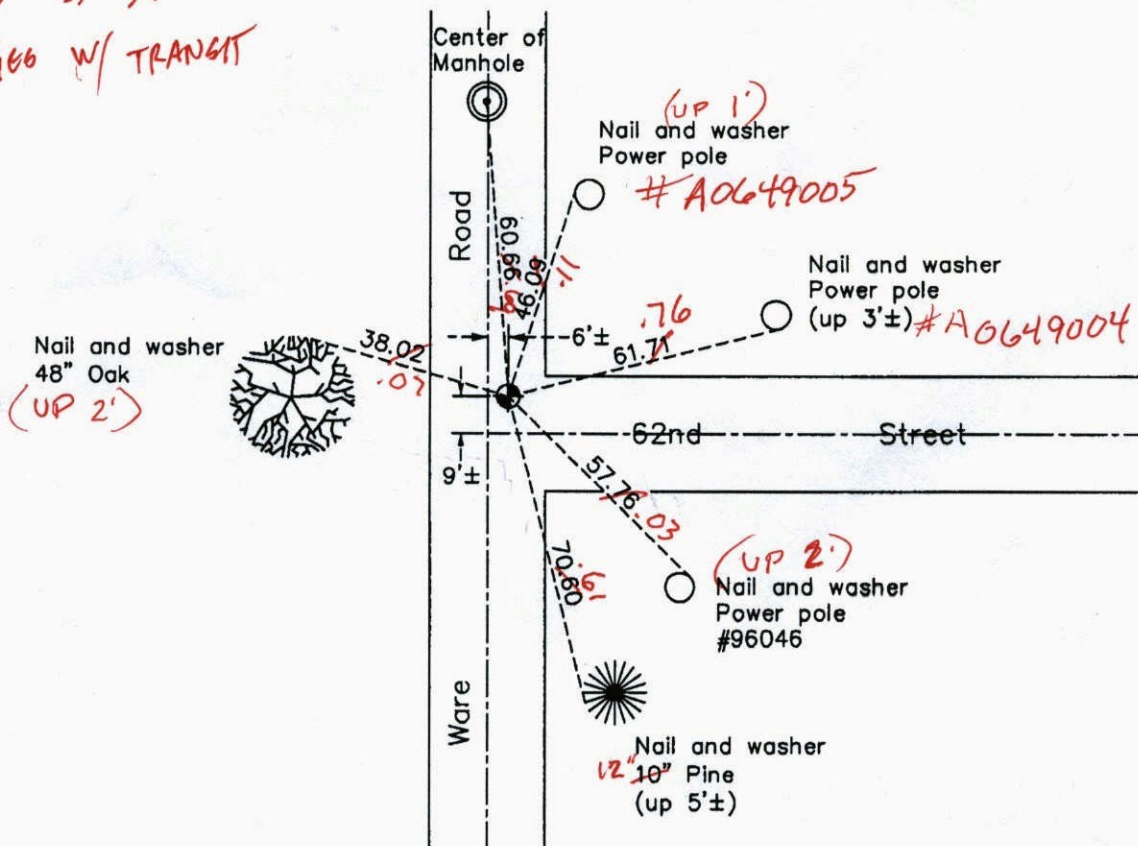
and to perpetuate the location of said corner, at the exact location thereof, a permanent marker was placed consisting of a cast iron monument

AND on the 7th day of July, 2010, said permanent marker was found flush with the surface and the ties were updated

Updated reference ties are as shown below.

12.12.13 JS SH

TIES W/ TRANSIT



Revision Date

2/18/11

N.A.D. 1983 Coordinates
(1996 Adjustment)

County Project Coordinates

Northing 135073.7673

Easting 537297.2089

Date 6/13/96

I hereby certify that this United States public land survey monument record is correct and complete to the best of my knowledge and belief.

Larry D. Hoium Date 2/18/11

Larry D. Hoium, Anoka County Surveyor

Minnesota License Number 18165

VRS COORDS
3D R = 0.05

N: 135073.7026 E: 537297.1390

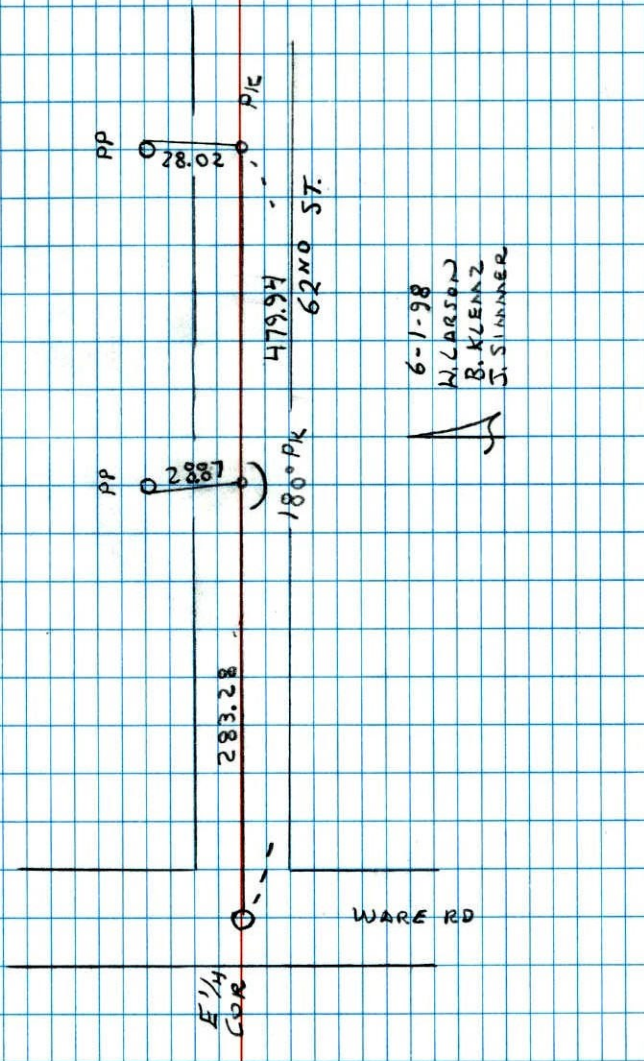
TRANSIT TIES

E 1/4 COR SEC 31 T31 R22

SET PK'S TO THE EAST ON 62ND ST

NO. 446

NATIONAL POINTFAST



CERTIFICATE OF LOCATION OF GOVERNMENT CORNER

County of Anoka

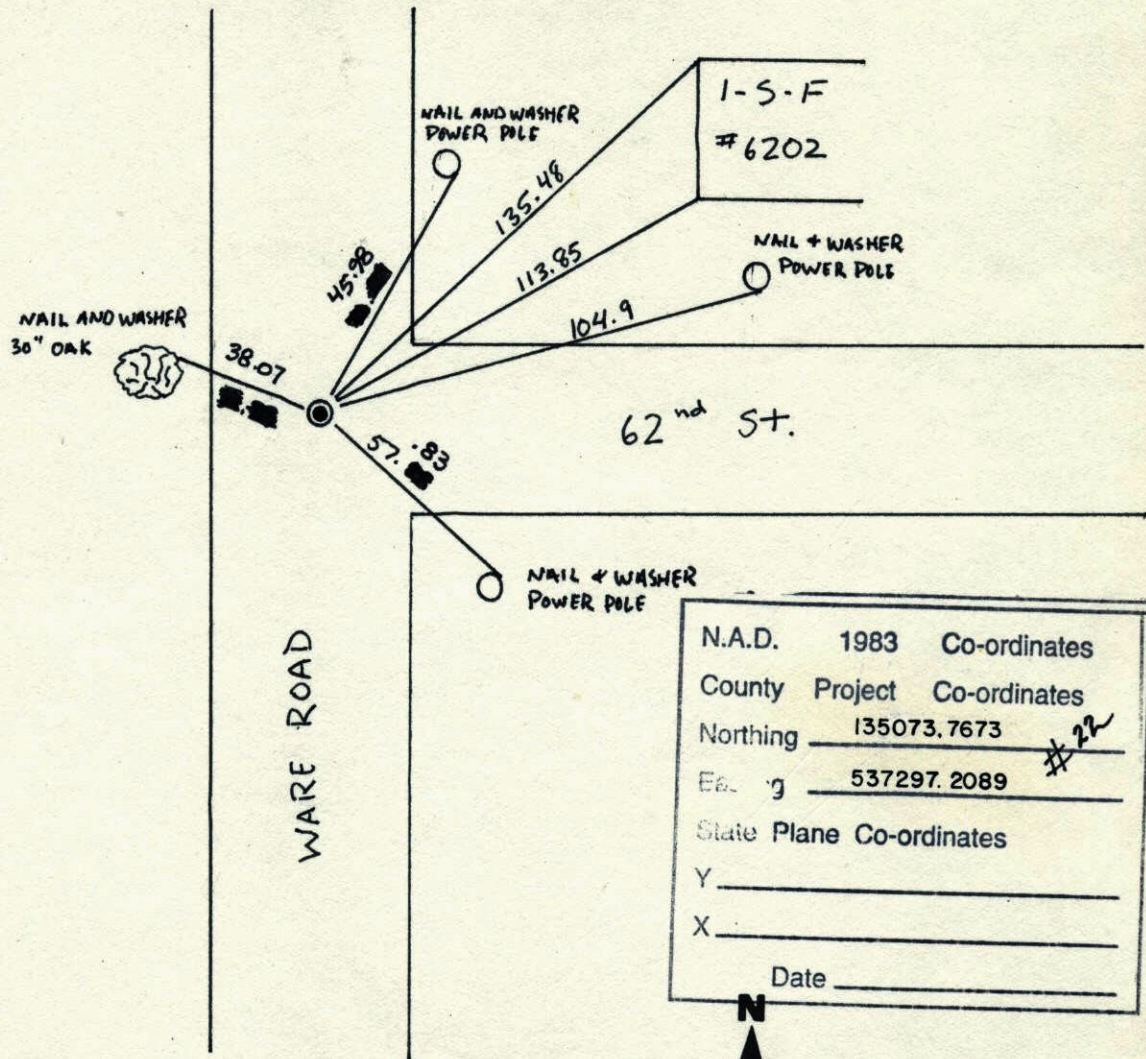
State of Minnesota

EAST Quarter Corner of Sec. 31 Township 31 Range 22

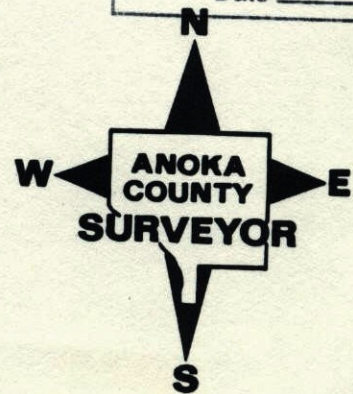
I hereby certify that on the 10th day of April, 1962, I found the described corner which was evidenced by 4" SQUARE CONCRETE MONUMENT

and I further certify that to perpetuate the location of said corner, I did, at the exact location thereof, place a permanent marker consisting of CAST IRON MONUMENT

which reference or witness monuments are located in the manner following:

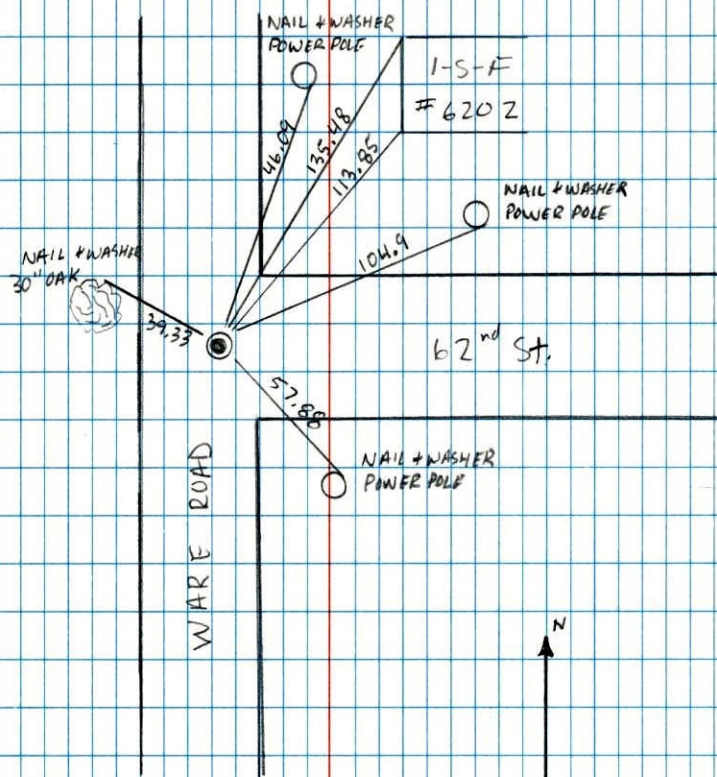


Revised date	Revised date	Revised date
7-16-86		
8-27-91		
6-13-96		



EAST SEC 31 TW 31 R 22

CAST IRON MONUMENT



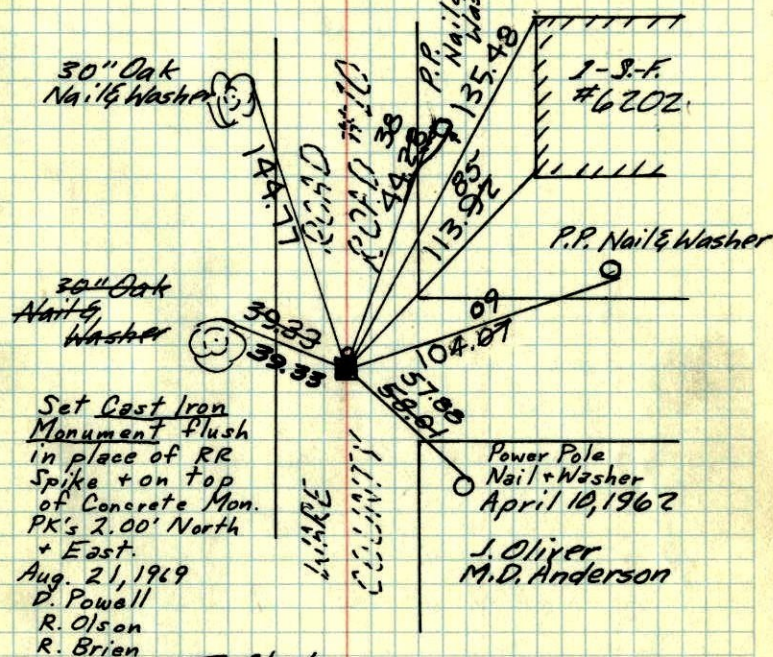
Jonathan Doll
Jason Anderson
6/13/96

E 1/4 Cor. Sec. 31-31-22

found 4" Sq. Cont. Monument down 1.5'

1/2" iron pipe on N. face

RR Spike in place.



Set Cast Iron
Monument flush
in place of RR
Spike + on top
of Concrete Mon.
PK's 2.00' North
+ East.
Aug. 21, 1969
D. Powell
R. Olson
R. Brien

Tie Check
July 2, 1973
B. Olson
P. Brien
D. Farmer

Tied 6-15-65
M. D. Anderson
John Dunlop

TEMPERATURE CORRECTED
AND HORIZONTALLY
TAPED MEASUREMENTS

TIE CHECK
7-31-80
B. STEPHENS
P. ROSS
P. HORNEY

TIE CHECK
JUNE 6, 1977
P. SANDERUD
J. BRIEN
J. JEDRELS

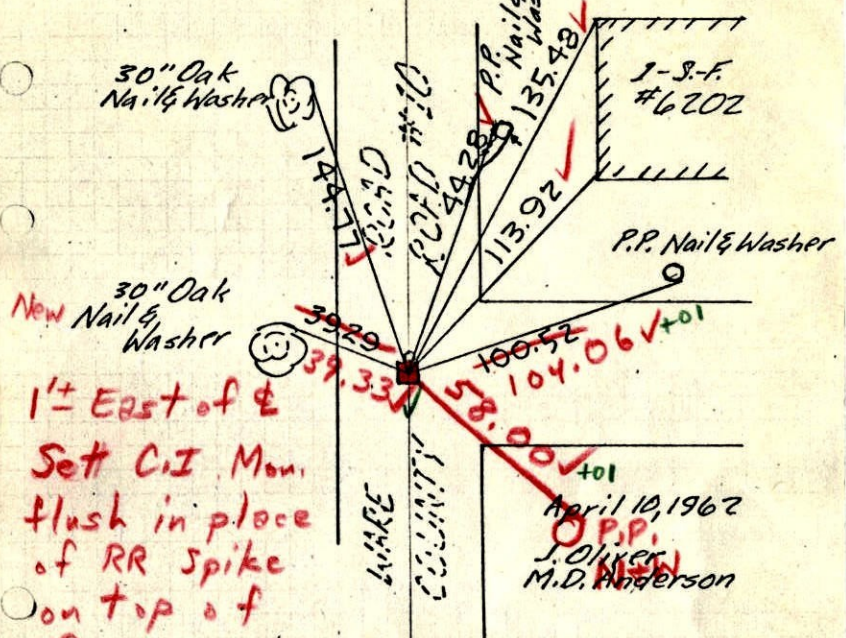
ROLAND W. ANDERSON
COUNTY SURVEYOR
ANOKA COUNTY, MINNESOTA

X

E 1/4 Cor. Sec. 31-31-22

131
1969

found 4" Sq. Conc. Monument down 1.5'
1/2" iron pipe on N. face
RR Spike in place.



1" East of &
Set C.I. Mon.
flush in place
of RR Spike
on top of
Conc.

PK's 2.00' N4E

8/21/69 #5-75
D. Powell, R. Olson, R. Brian, M.D. Anderson, John Dunlop

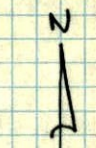
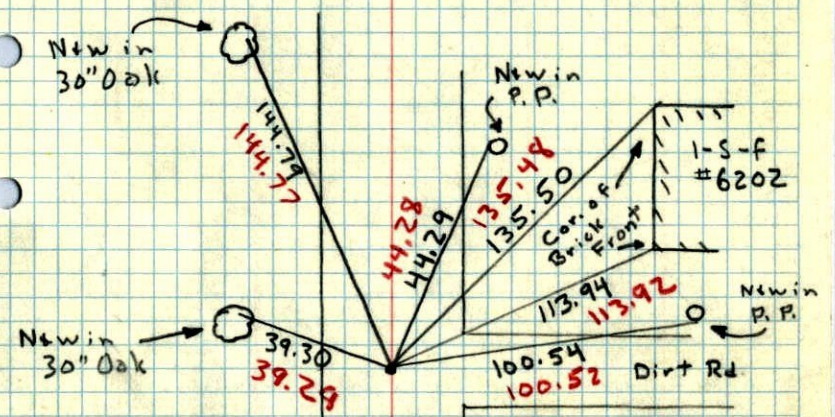
TEMPERATURE CORRECTED
AND HORIZONTALLY
TAPED MEASUREMENTS

ROLAND W. ANDERSON
COUNTY SURVEYOR
ANOKA COUNTY, MINNESOTA

1962

E 1/4 Cor. of Sec. 31, T31, R22

Found 4" Sq. Conc. Mon with hole in Center
& Top painted Red down 15"
Set 3/4" I. P. on No. Side



10, April 62
42°

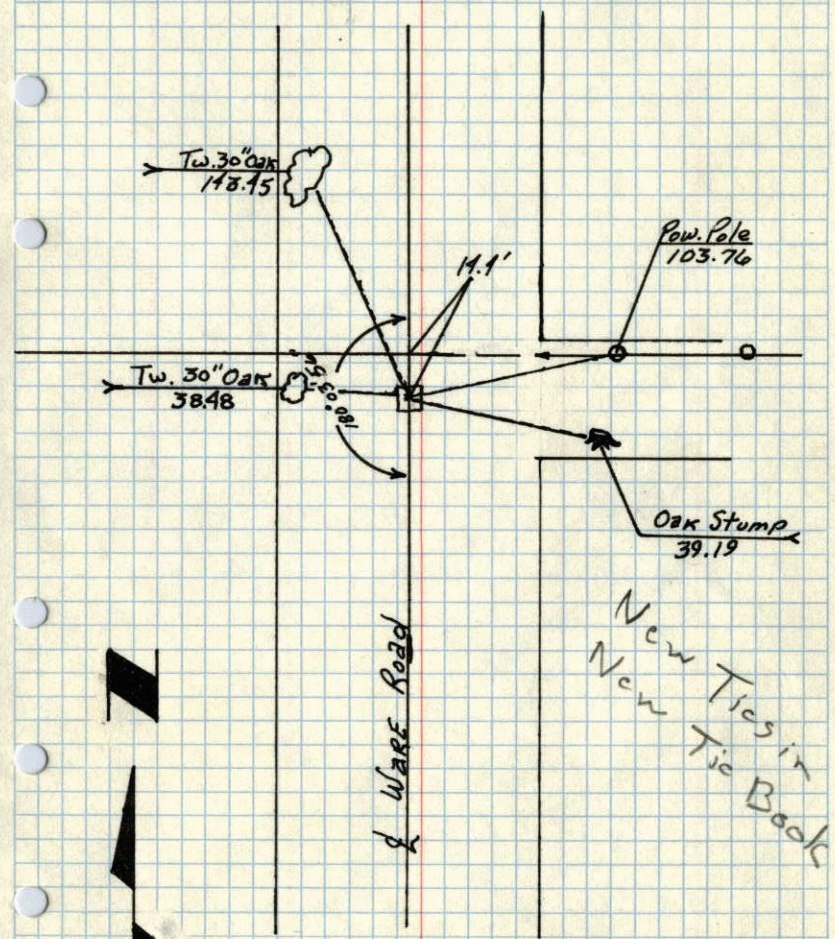
J. Oliver
M.D. Anderson

WARE ROAD
Co. Rd #10

1959 4/1

E 1/4 CORNER OF SEC. 31, T 31, R 22

4" SQUARE STONE MONUMENT 0.6' DEEP

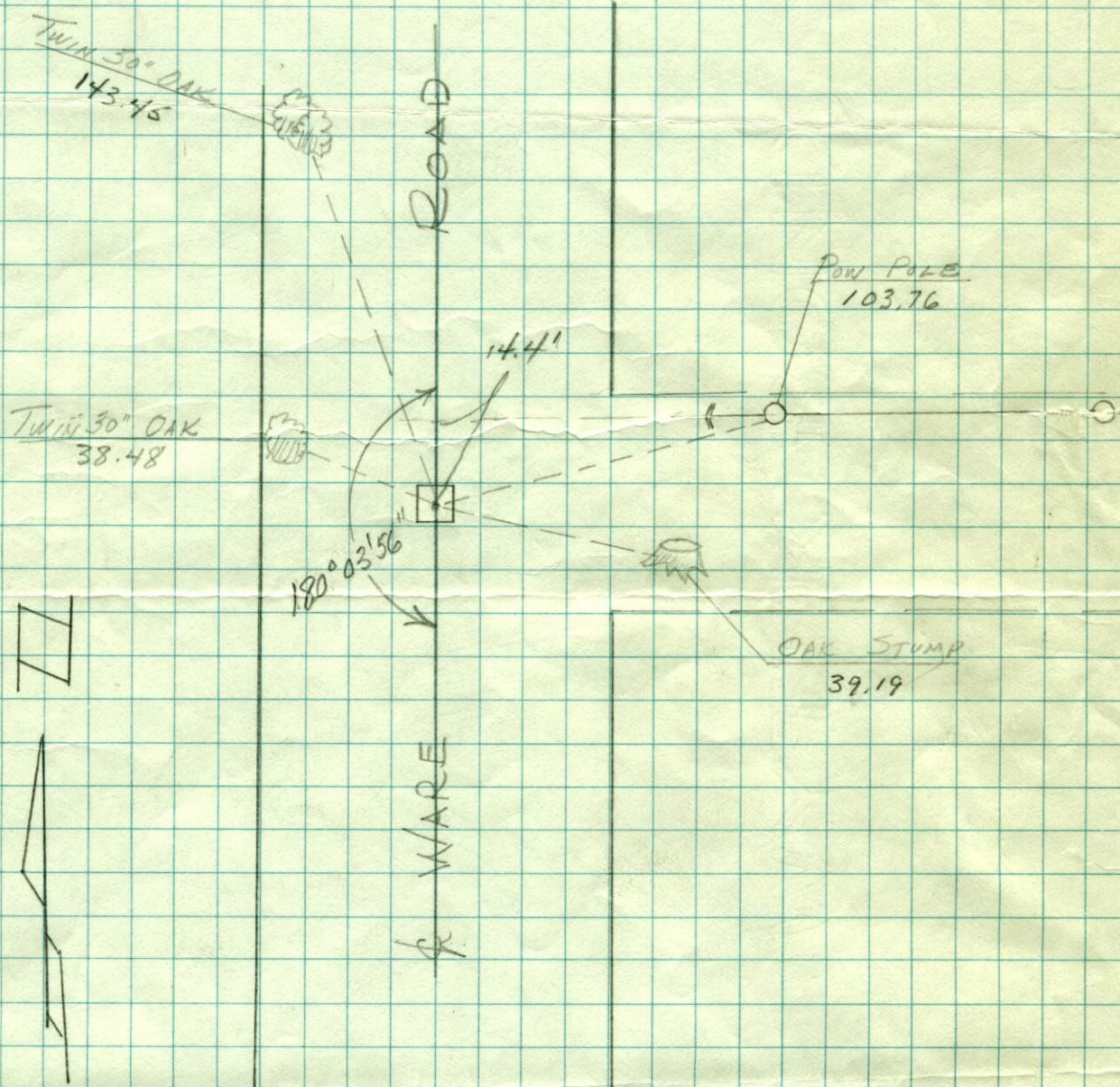


JUNE 4, 1959
N. S. P.

E 1/4 CORN SEC 31-31-22

June 4, 1959

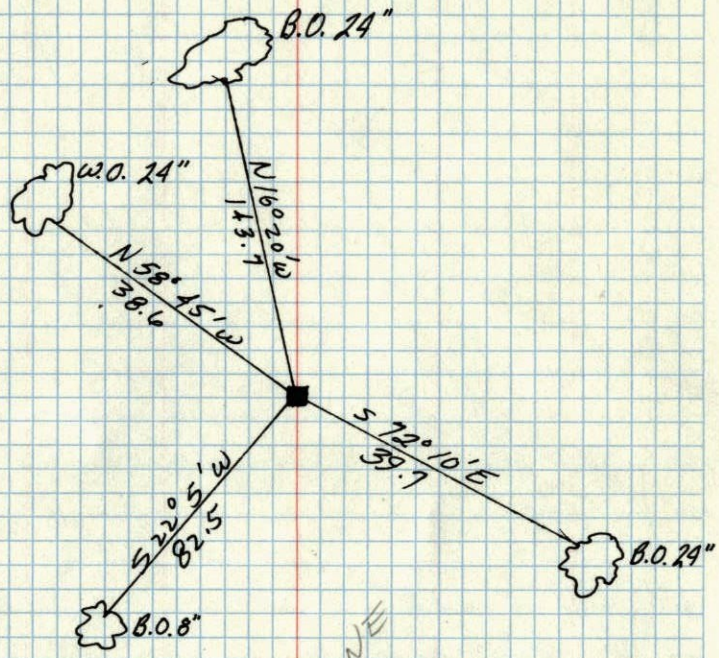
N.S.P.



4" SQUARE STONE MONUMENT 0.6' DEEP

1944

E 1/4 SEC. 31, T 31, R 22



GONE

TIES

Oct 28, 1944
Cartwright