

CERTIFICATE OF LOCATION OF GOVERNMENT CORNER

County of Anoka

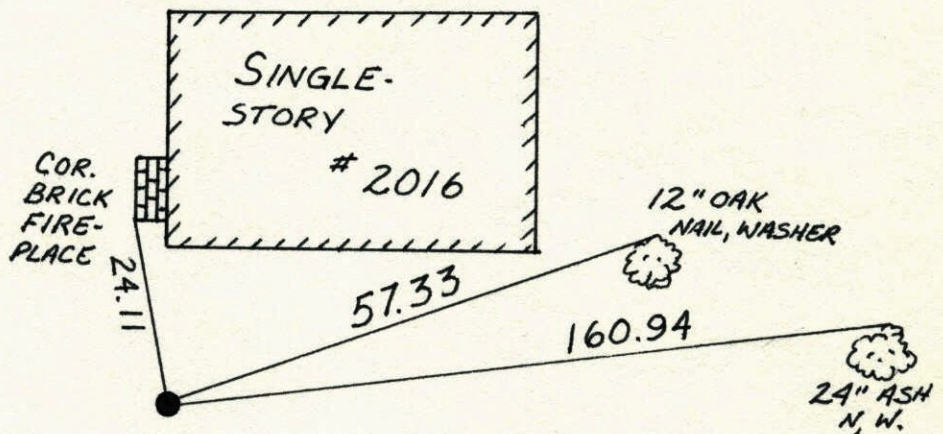
State of Minnesota

MEANDER Corner of Sec. 35 Township 31 Range 22
E. LINE

I hereby certify that on the 6 day of MAY, 1963, I found the described corner which was evidenced by _____

and I further certify that to perpetuate the location of said corner, I did, at the exact location thereof, place a permanent marker consisting of CAST IRON MON.

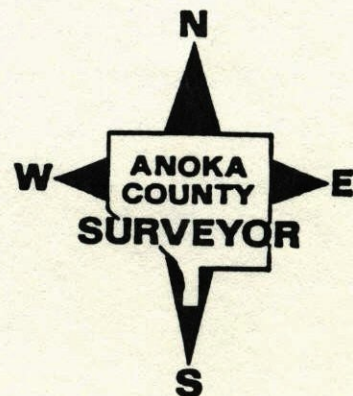
which reference or witness monuments are located in the manner following:



N.A.D.	1983	Co-ordinates
County	Project	Co-ordinates
Northing	<u>135171.6059</u>	# <u>156</u>
Easting	<u>558312.4037</u>	
State Plane Co-ordinates		
Y	_____	
X	_____	
Date	_____	

(Hand-drawn wavy lines representing a lake)
 OTTER LAKE

Revised date	Revised date	Revised date
<u>7-30-86</u>		
<u>10-17-91</u>		
<u>6-27-96</u>		



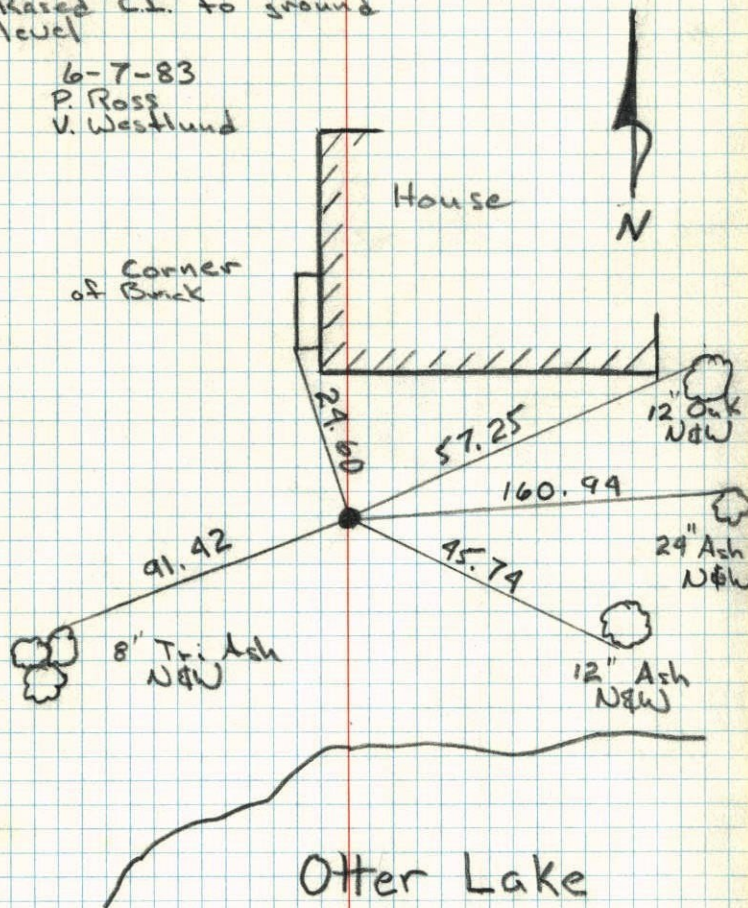
Meander Cor. E line Sec. 35 T31 R22

Found 1" I.P. down 1' that fits ties to Conc. Mon.
(by H.A.C.) very good. Dug down 3.5' could find no trace
of Conc. Mon. Set CI flush.

May 6 1963

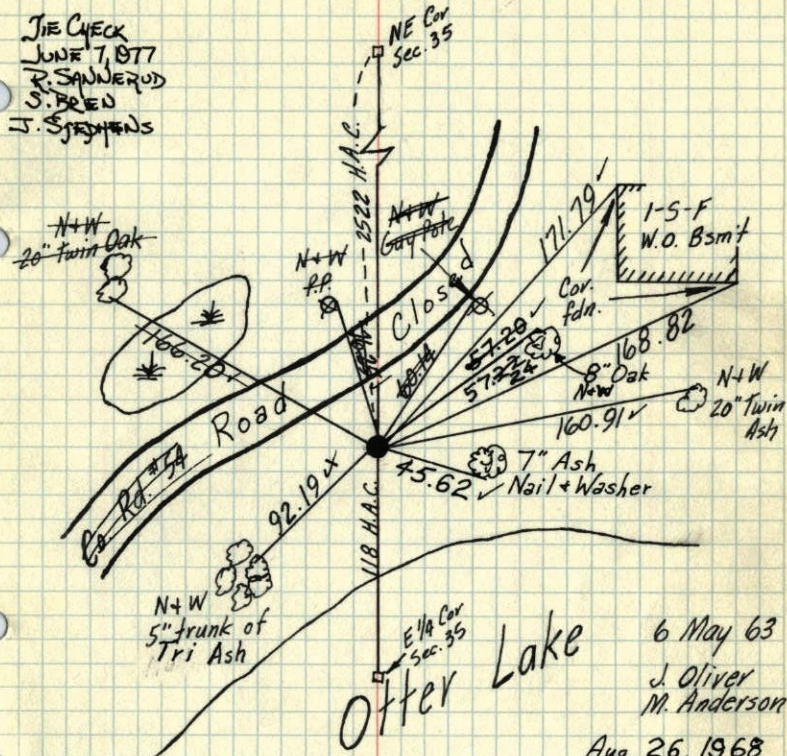
M. Oliver
M. Anderson

found C.I. after house
construction down 3'.
Rased C.I. to ground
level

6-7-83
P. Ross
V. Westlund

Meander Cor. E. line Sec. 35 T31, R22

Found 1" I.P. down 1' that fits ties to Conc. Mon.
(by H.A.C.) very good. Dug down 3.5' could find no trace
of Conc. Mon. Set East Iron Mon. flush

TIE CHECK
JUNE 7, 1977
P. SANJERUD
S. BRIEN
J. SYDGENS

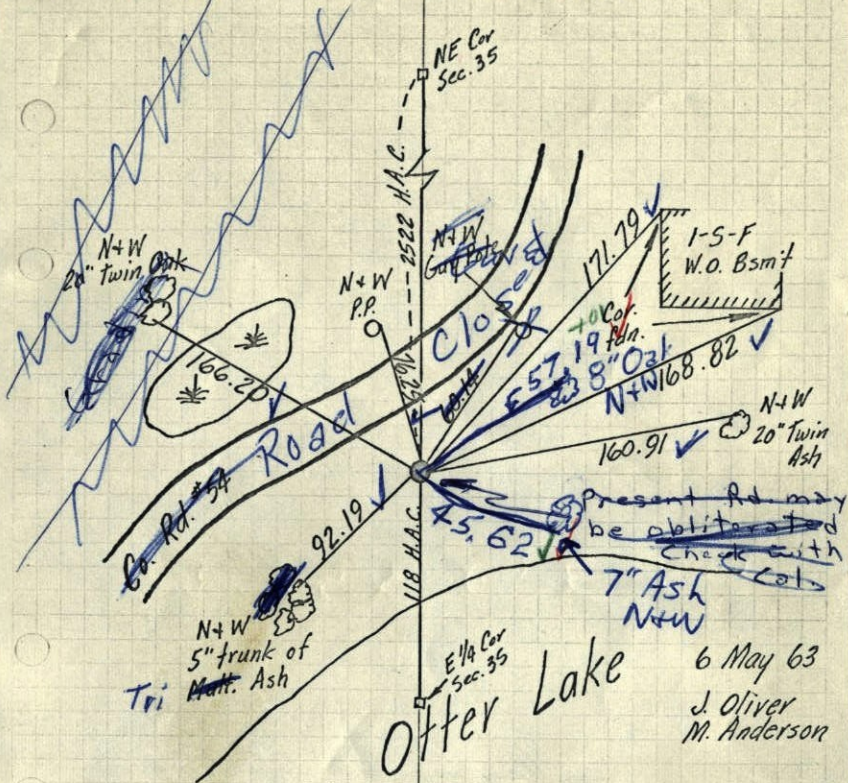
TEMPERATURE CORRECTED
AND HORIZONTALLY
TAPED MEASUREMENTS

Tie Check
July 3, 1973
B. Olson
D. Brien
D. Farmer

ROLAND W. ANDERSON
COUNTY SURVEYOR
ANOKA COUNTY, MINNESOTA

1968 72
 Meander Cor. E. line Sec. 35 T31, R22

Found 1" I.P. down 1' that fits ties to Conc. Mon.
 (by H.A.C.) very good. Dug down 3.5', could find no trace
 of Conc. Mon. Set East Iron Mon. Flush



6 May 63
 J. Oliver
 M. Anderson

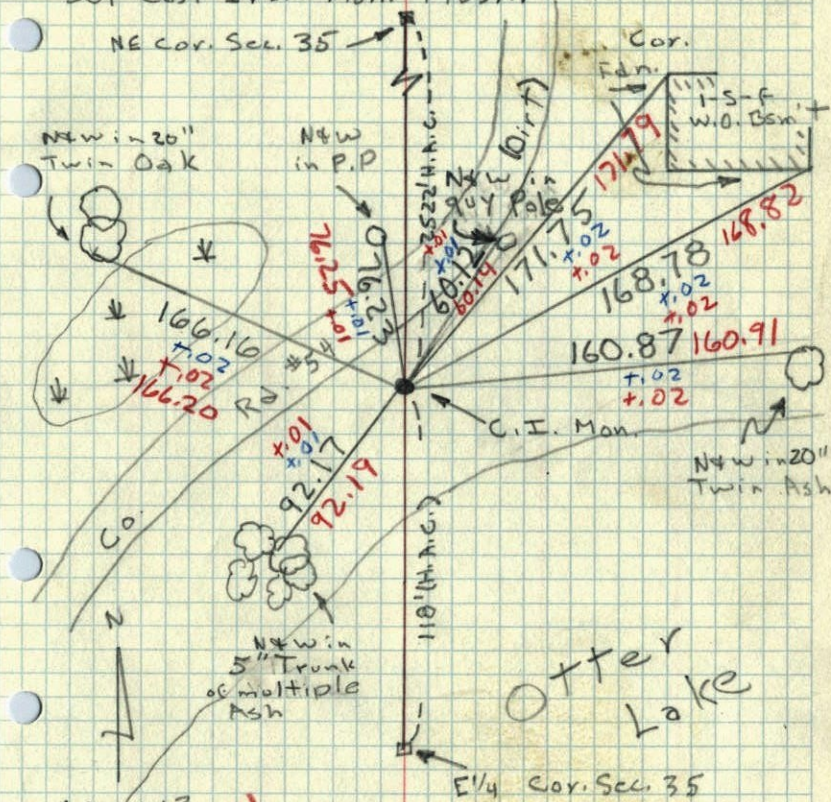
TEMPERATURE CORRECTED
 AND HORIZONTALLY
 TAPED MEASUREMENTS

8/26/68
 ✓ #6 - 68 ✓
 D. Powell
 R. Olson
 P. Pich

ROLAND W. ANDERSON
 COUNTY SURVEYOR
 ANOKA COUNTY, MINNESOTA

1963
 Meander Corner E. line Sec. 35, T31, R22

Found 1" I.P. down 1' that fits Ties to
 Conc. Mon. (by H.A.C.) very good. Dug down
 3.5', could find no trace of Conc. Mon.
 Set East Iron Mon. Flush.



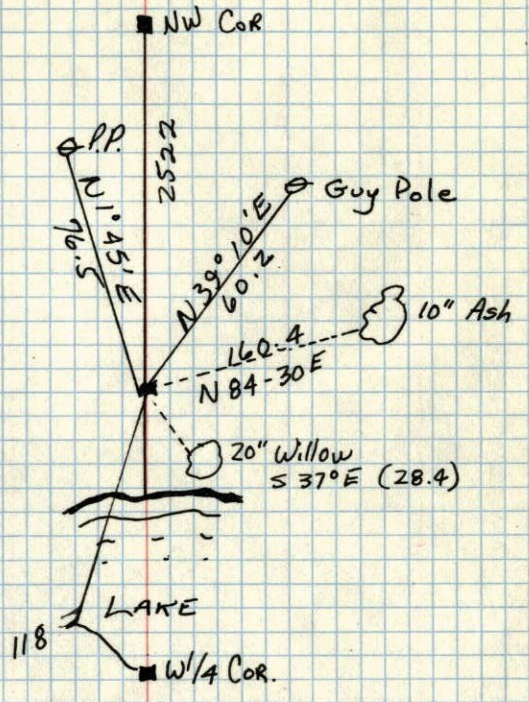
6 May 63
 82° #2
 J. Oliver
 M.D. Anderson

Otter Lake

E 1/4 Cor. Sec. 35

1946 49

M.P. SEC. 35, T31, R22
CONC. MON.



Aug 2, 1946
CARTWRIGHT