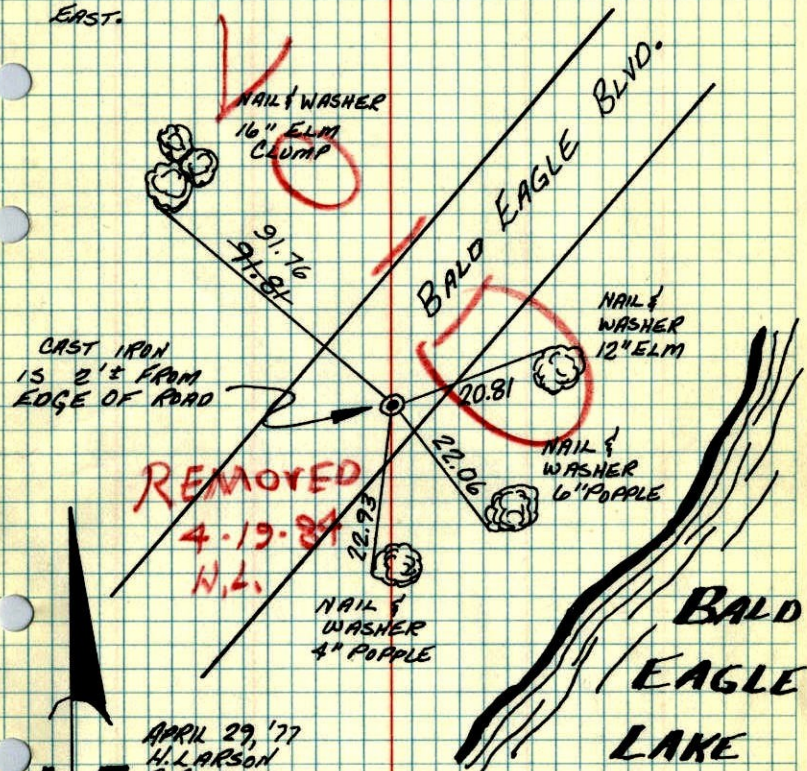


WC ON EAST LINE OF NE 1/4
SEC. 36 - T31 - R22

SET CAST IRON MONUMENT FROM AREA RESURVEY.
CAST IRON IS FRESH, WITH PK'S 200' NORTH AND
EAST.



REMOVED
4-19-81
N.L.

APRIL 29, '77
H. LARSON
B. GUETZKO

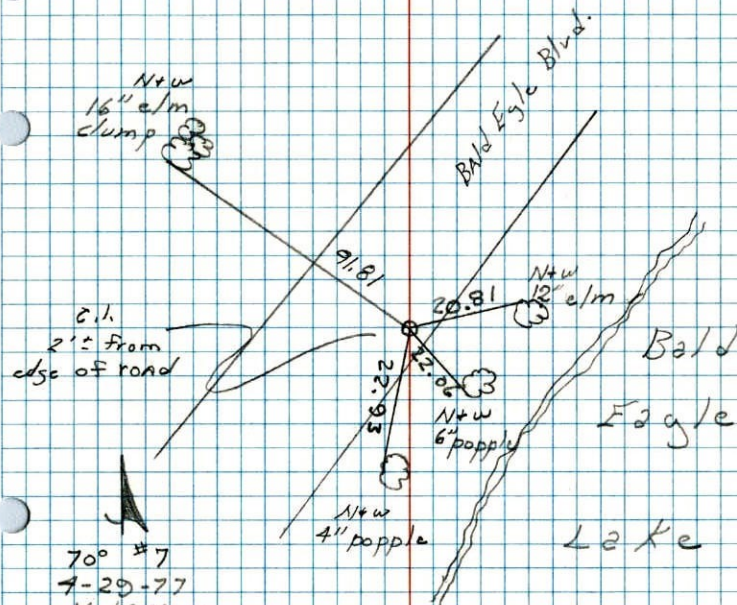
TIE CHECK
8-11-80
B. STEPHENS
P. ROSS
P. HORNBY

TEMPERATURE CORRECTED
AND HORIZONTALLY
TAPED MEASUREMENTS

ROLAND W. ANDERSON
COUNTY SURVEYOR
ANOKA COUNTY, MINNESOTA

W.C. on East Line of NE 1/4 Sec. 36
T31 R22

Set cast iron monument from area
resurvey c.i. Flush with PK's 200 N
and E.



70° #7
4-29-77
H. Larson
B. Guetzko