

# CERTIFICATE OF LOCATION OF GOVERNMENT CORNER

County of Anoka

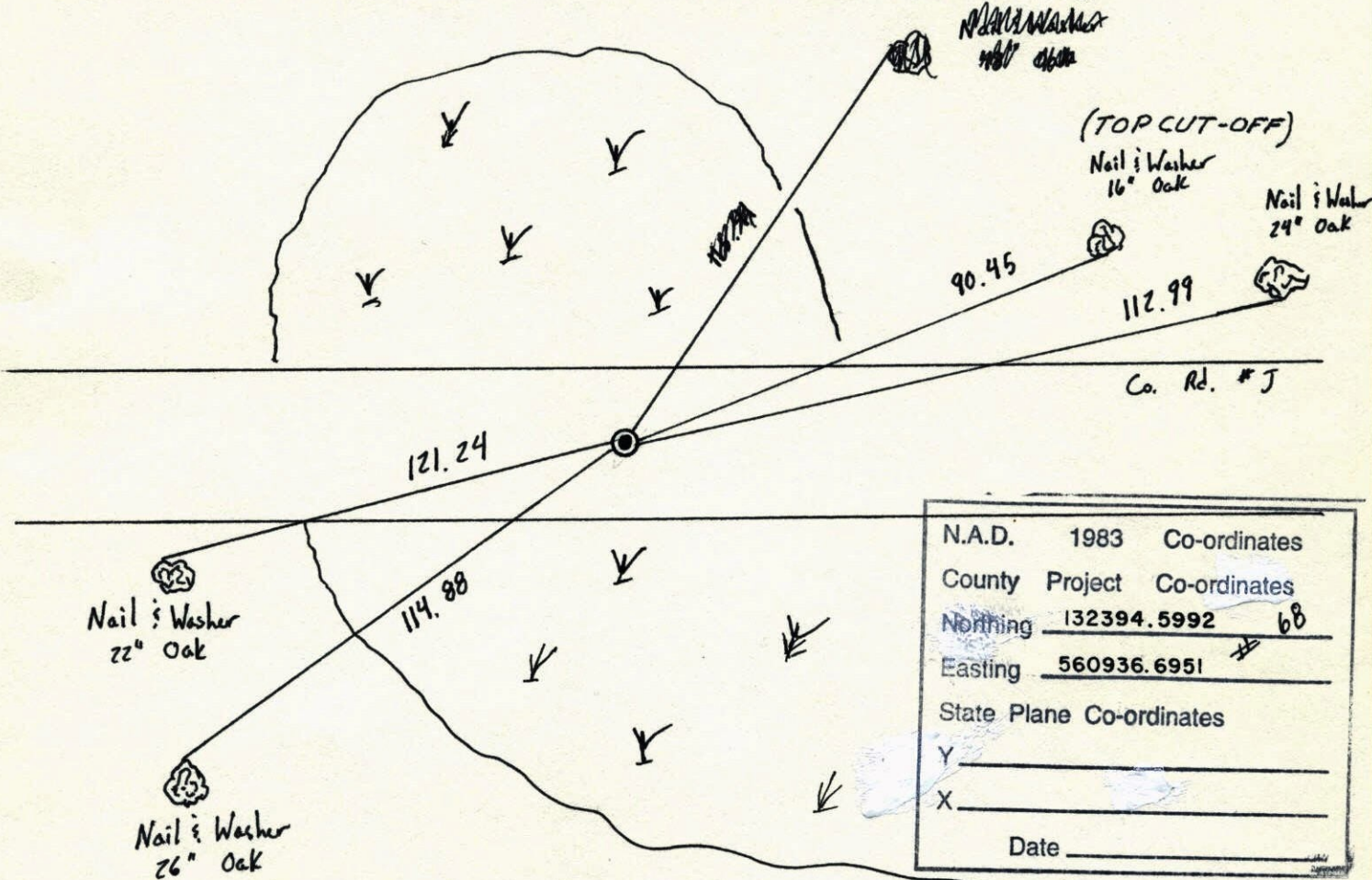
State of Minnesota

South 1/4 Corner of Sec. 36 Township 31 Range 22

I hereby certify that on the 16 day of May, 1963, I found the described corner which was evidenced by 1" Iron Pipe

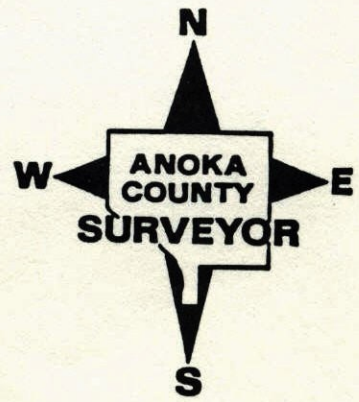
and I further certify that to perpetuate the location of said corner, I did, at the exact location thereof, place a permanent marker consisting of Cast Iron Monument

which reference or witness monuments are located in the manner following:



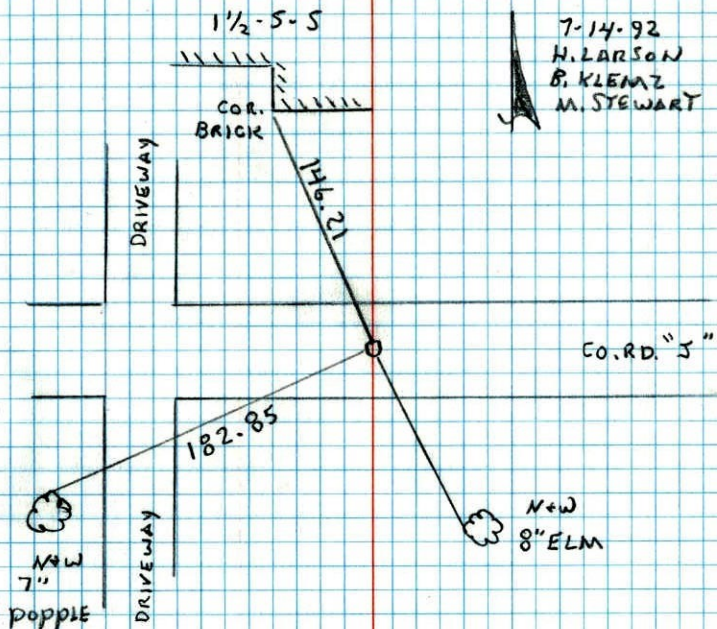
N.A.D.	1983	Co-ordinates
County	Project	Co-ordinates
Northing	<u>132394.5992</u>	<u>68</u>
Easting	<u>560936.6951</u>	
State Plane Co-ordinates		
Y	_____	
X	_____	
Date	_____	

Revised date	Revised date	Revised date
5-16-63	10-18-91	
9-25-69	6-24-96	
7-16-73	4-6-98	
6-7-77		
8-14-80		
7-9-86		
6-4-90		



SOUTH 1/4 COR. SECTION 36 T31 R23

RETIED C.I. FOR CONSTRUCTION

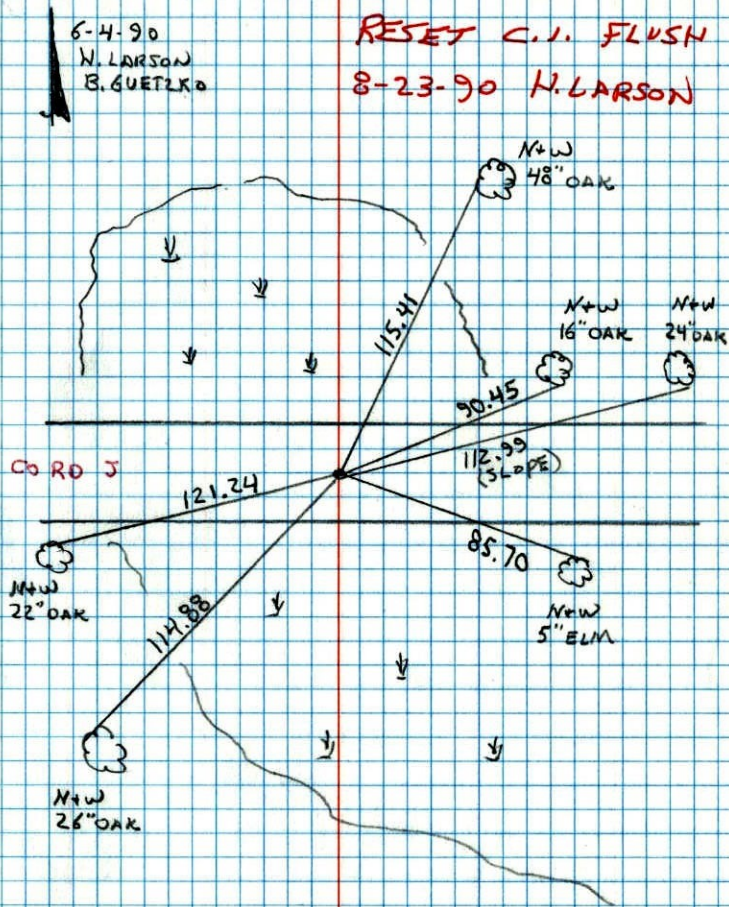


7-14-92  
H. LARSON  
B. KLEMAZ  
M. STEWART

S 1/4 CORNER SECTION 36 T31 R22

REMOVED + RETIED FOR CONSTRUCTION

RESET C.I. FLUSH  
8-23-90 H. LARSON



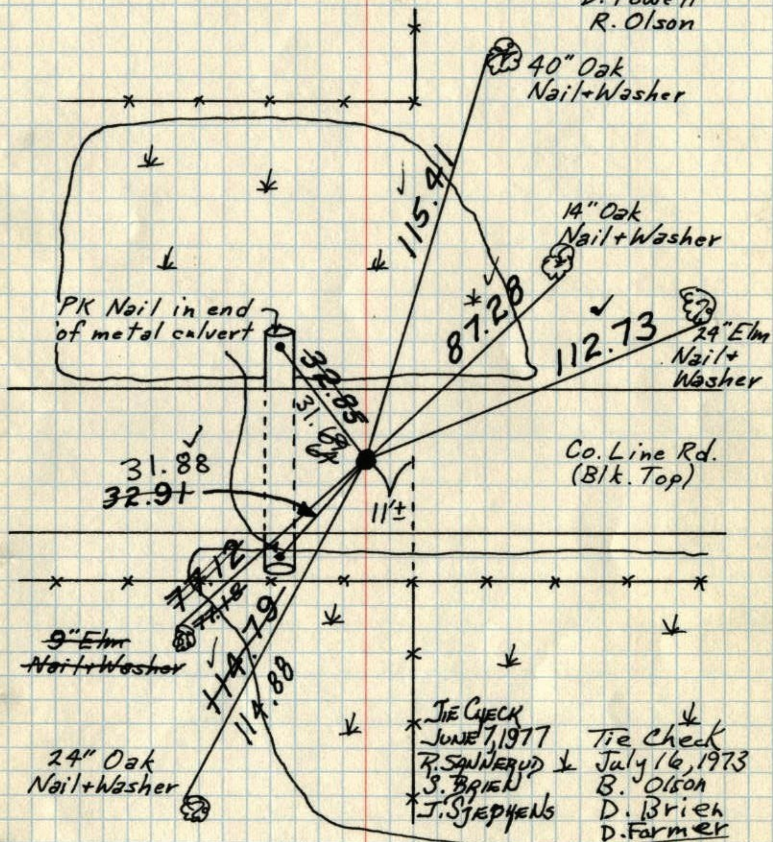
6-4-90  
H. LARSON  
B. GUETZKO

CO RD J

## S 1/4 Cor. Sec. 36 - T31-R22

Found 1" Iron Pipe down 0.1' from Cartwright's ties.  
May 16, 1963  
J. Oliver  
M.D. Anderson

Replaced Iron with Cast Iron Monument  
flush. PK's 2.00' North + East. Sept. 25, 1969  
D. Powell  
R. Olson



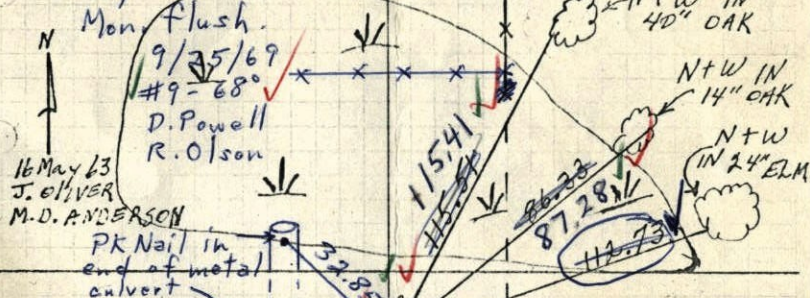
TEMPERATURE CORRECTED  
AND HORIZONTALLY  
TAPED MEASUREMENTS

ROLAND W. ANDERSON  
COUNTY SURVEYOR  
ANOKA COUNTY, MINNESOTA

## S 1/4 Cor. Sec. 36, T31, R22

Found 1" Iron pipe down 0.1' from Cartwright's ties. No Conc. mentioned in ties and none found - Set ~~Nails~~ <sup>PK Nails</sup> and Washers 2.00' North and East.

Replaced Iron with C.I. Mon. flush.



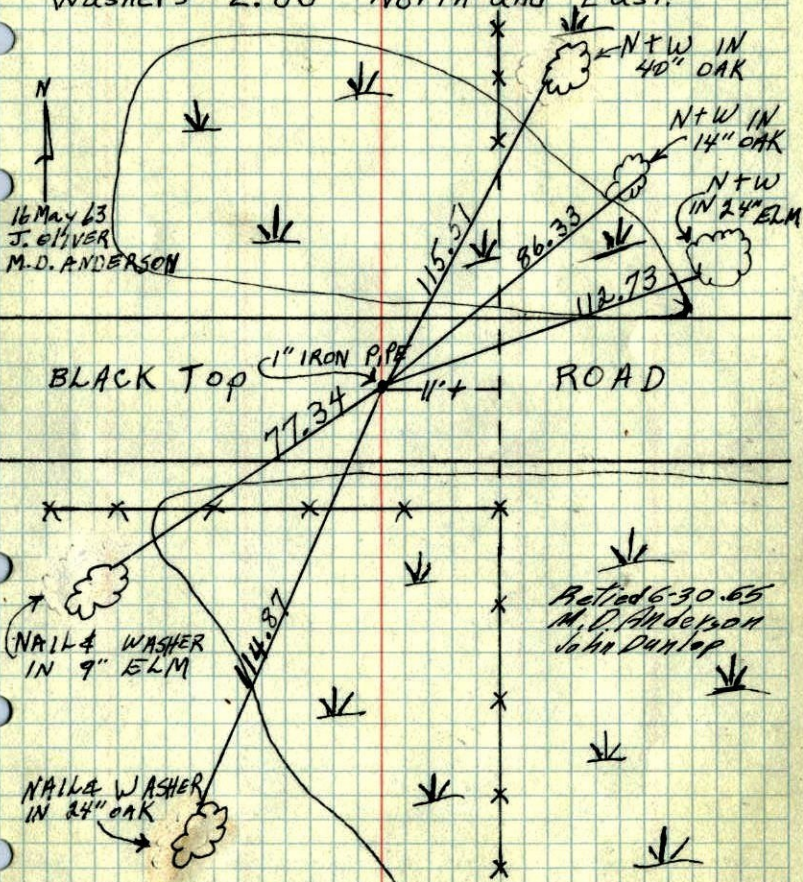
TEMPERATURE CORRECTED  
AND HORIZONTALLY  
TAPED MEASUREMENTS

ROLAND W. ANDERSON  
COUNTY SURVEYOR  
ANOKA COUNTY, MINNESOTA

1965 140

S 1/4 Cor. Sec. 36, T31, R22

Found 1" Iron pipe down 0.1' from Cartwrights ties. No Conc. mentioned in ties and none found - Set Nails and Washers 2.00' North and East



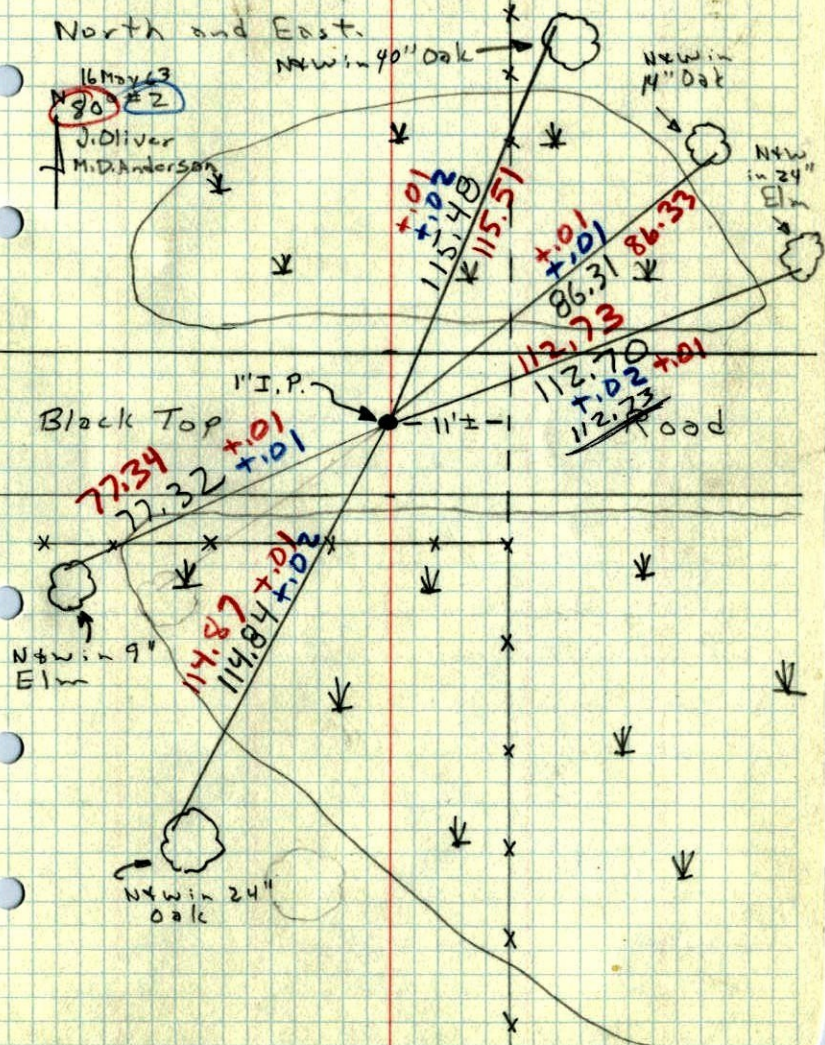
TEMPERATURE CORRECTED AND HORIZONTALLY TAPED MEASUREMENTS

ROLAND W. ANDERSON  
COUNTY SURVEYOR  
ANOKA COUNTY, MINNESOTA

1963

S 1/4 Cor. Sec. 36, T31, R22

Found 1" I.P. down 0.1' From Cartwrights Ties. No Conc. mentioned in Ties and none found. - Set Nails and Washers 2.00' North and East.



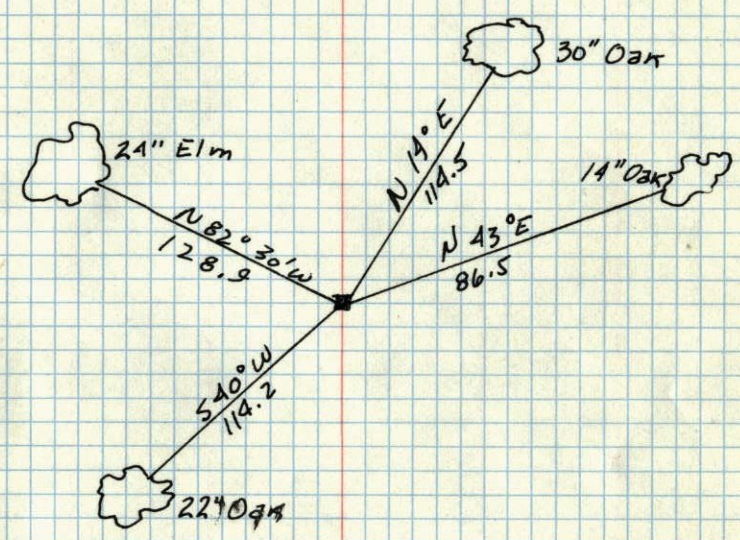
16 May 63  
No. 80 #2  
J. Oliver  
M.D. Anderson

N+win 9"  
Elm

N+win 24"  
Oak

1946 52

S1/4 SEC 36, T31, R22



JUNE 27, 1946  
Cartwright