

CERTIFICATE OF LOCATION OF GOVERNMENT CORNER

County of Anoka

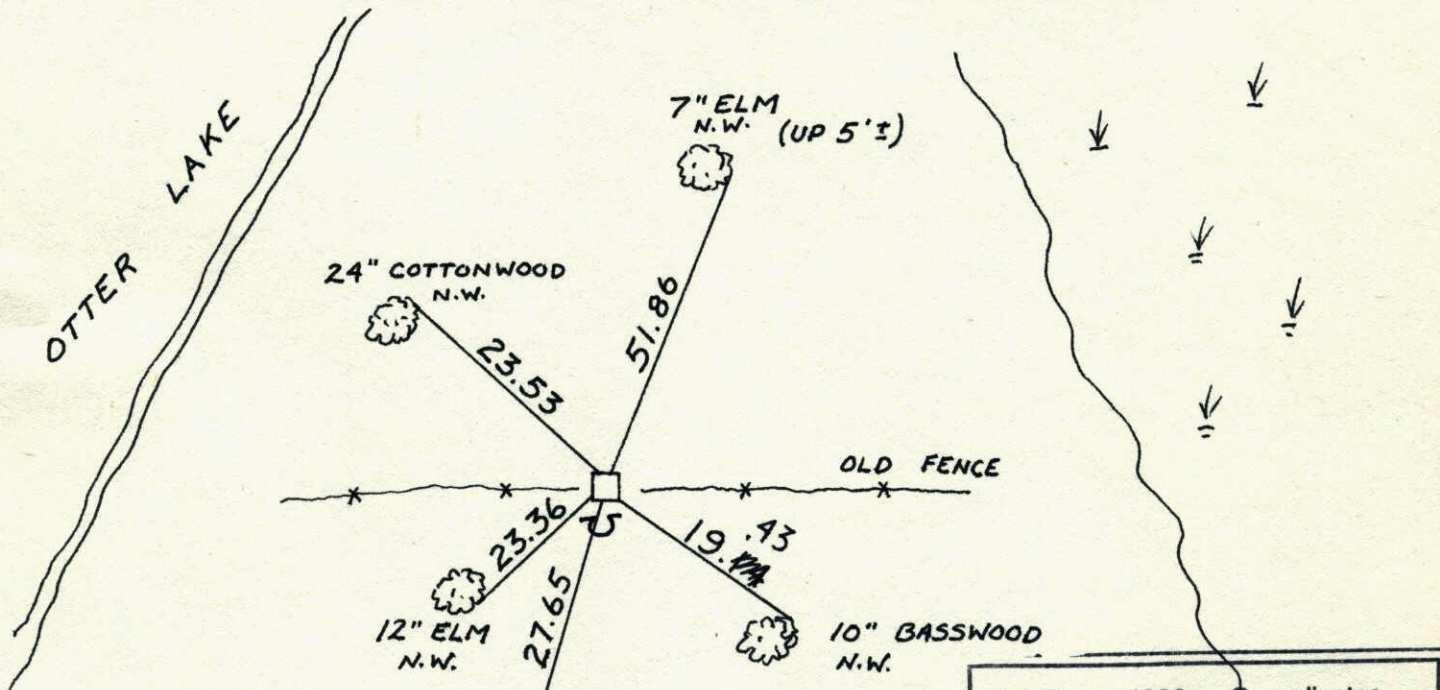
State of Minnesota

MEANDER #33 Corner of Sec. 36 Township 31 Range 22
S. LINE

I hereby certify that on the 8th day of JULY, 1963, I found the described corner which was evidenced by GRANITE MONUMENT

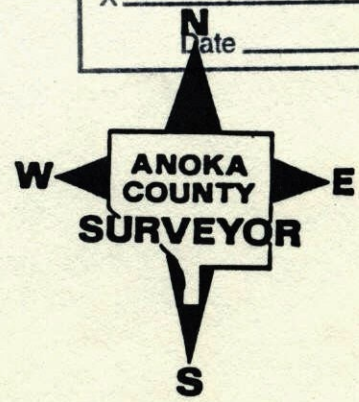
and I further certify that to perpetuate the location of said corner, I did, at the exact location thereof, place a permanent marker consisting of GRANITE MON. SIGN & POST ON SOUTH SIDE

which reference or witness monuments are located in the manner following:



N.A.D.	1983	Co-ordinates
County	Project	Co-ordinates
Northing	132393.5412	
Easting	559540.5858	#157
State Plane Co-ordinates		
Y	_____	
X	_____	
Date	_____	

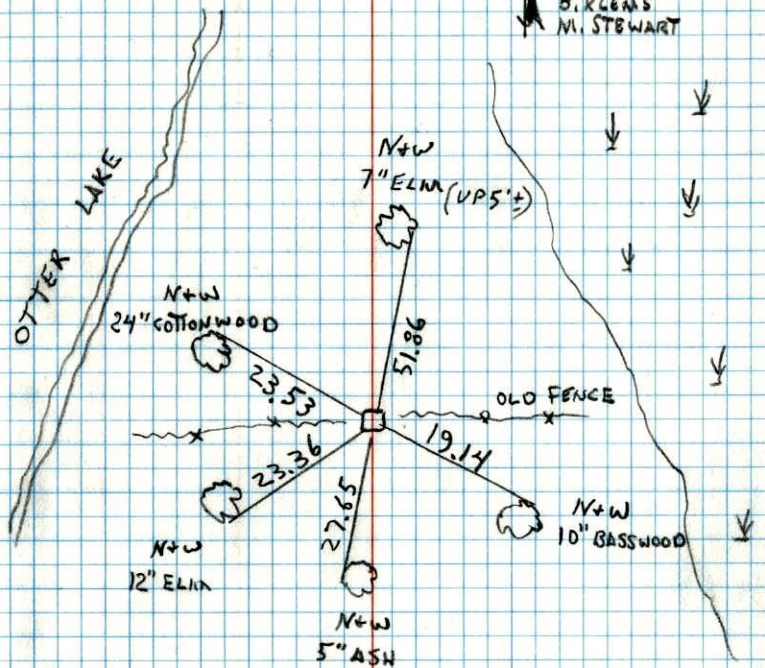
Revised date	Revised date	Revised date
8-5-92		
6-24-96		
4-8-98		



MEANDER COR. #33 S. LINE SEC 36 T31 R22

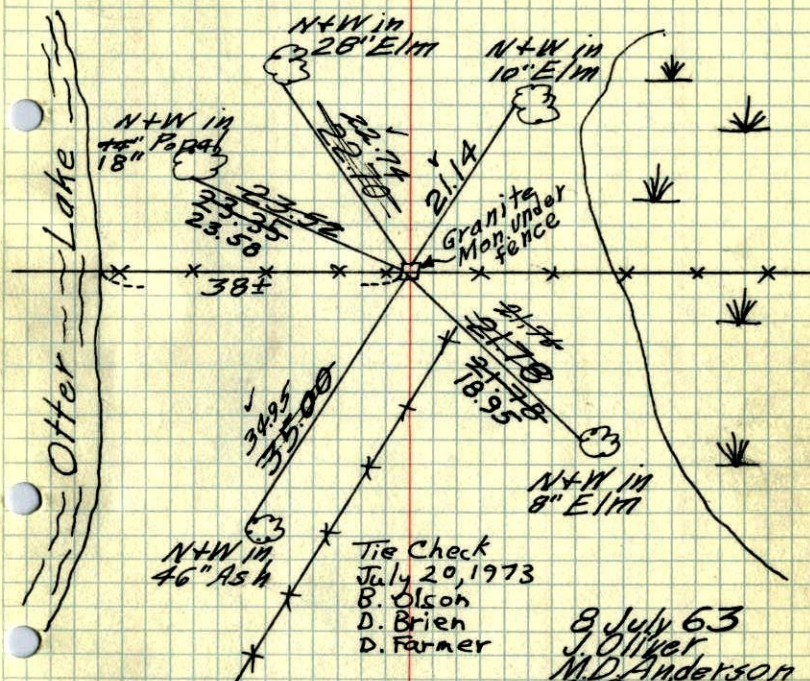
RETRIED GRANITE MON. SIGN + POST ON
SOUTH SIDE.

8-5-92
H. LARSON
B. KLEAS
M. STEWART



M.C. #33 on So. line of Sec. 36, T. 31, R. 22
Found Granite Mon. with drill hole in center
~~striking of G.P. (No. line NW 1/4 Sec. 3, T. 30, R. 22,
Ramsey Co. M.C. #17)~~

Monument down 0.2'



Tie Check
July 20, 1973
B. Olson
D. Brien
D. Farmer

8 July 63
J. Oliver
M.D. Anderson
R. Carlson

Retired 6-30-65
M.D. Anderson
John Dunlop

TEMPERATURE CORRECTED
AND HORIZONTALLY
TAPED MEASUREMENTS

TIE CHECK
8-14-80
B. STEPHENS
P. ROSS
P. HORNBY

ROLAND W. ANDERSON
COUNTY SURVEYOR
ANOKA COUNTY, MINNESOTA

1965

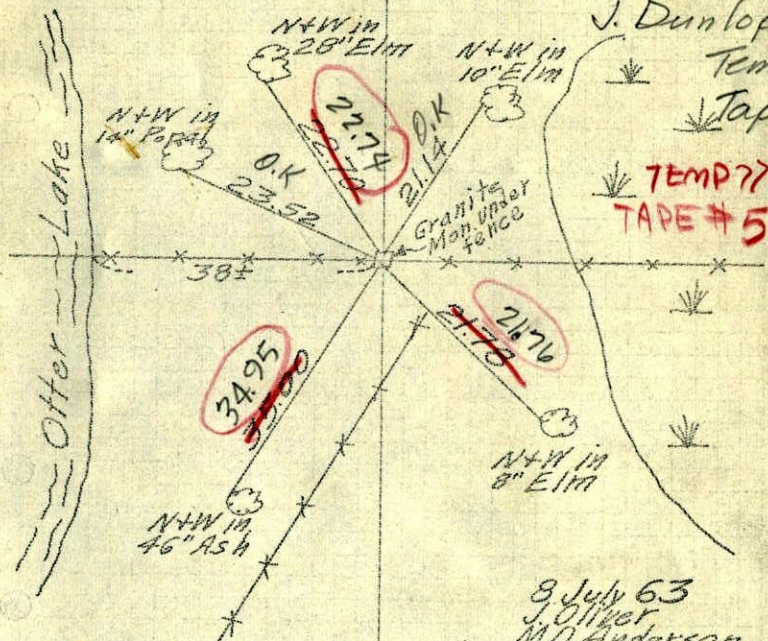
76

M.C. #33 on So. line of Sec. 36, T. 31, R. 22
Found Granite Mon. with drill hole in center
~~Sticking up 0.7' (No. line NW 1/4 Sec. 3, T. 30, R. 22, Ramsey Co. M.C. #17)~~
Ramsey Co. M.C. #17

Monument down 0.2' Tie check
June 30, 1965
M.D. Anderson
J. Dunlop

Temp.
Tape #

TEMP??
TAPE #5



TEMPERATURE CORRECTED
AND HORIZONTALLY
TAPED MEASUREMENTS

8 July 63
J. Oliver
M.D. Anderson
R. Carlson

ROLAND W. ANDERSON
COUNTY SURVEYOR
ANOKA COUNTY, MINNESOTA

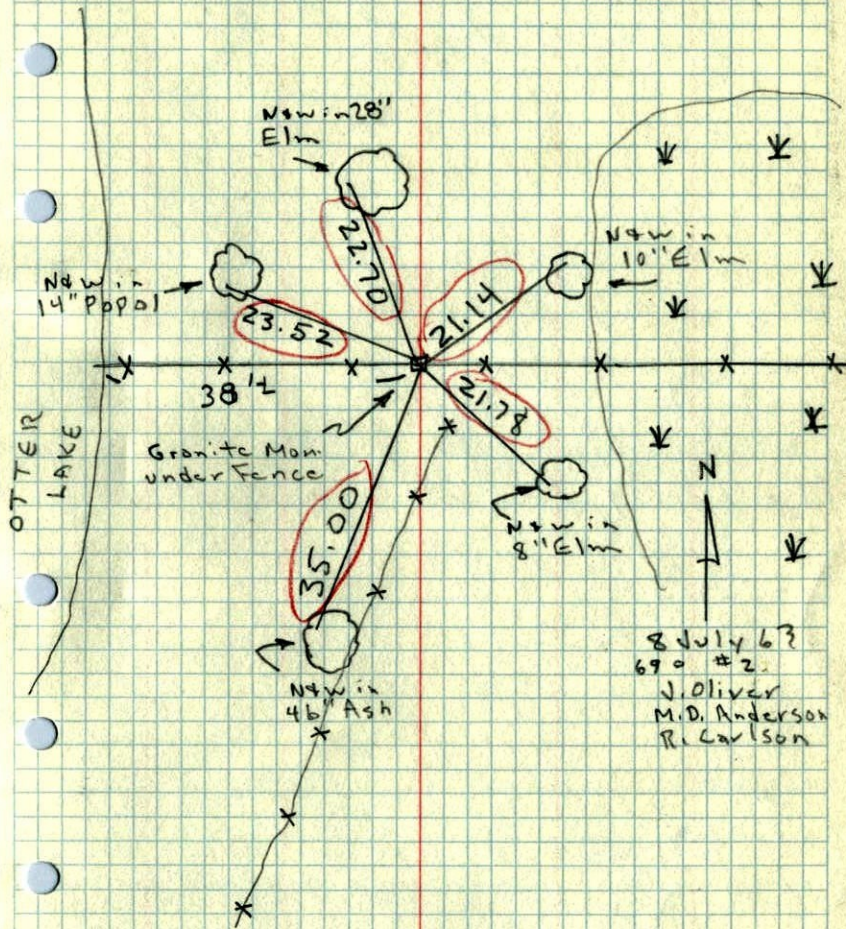
1963

#33

C. on So. line Sec. 36, T. 31, R. 22

Found Granite Mon. with drill hole in center

Sticking up 0.7'. (No. line NW 1/4 Sec. 3,
T. 30, R. 22, Ramsey Co. M.C. #17)

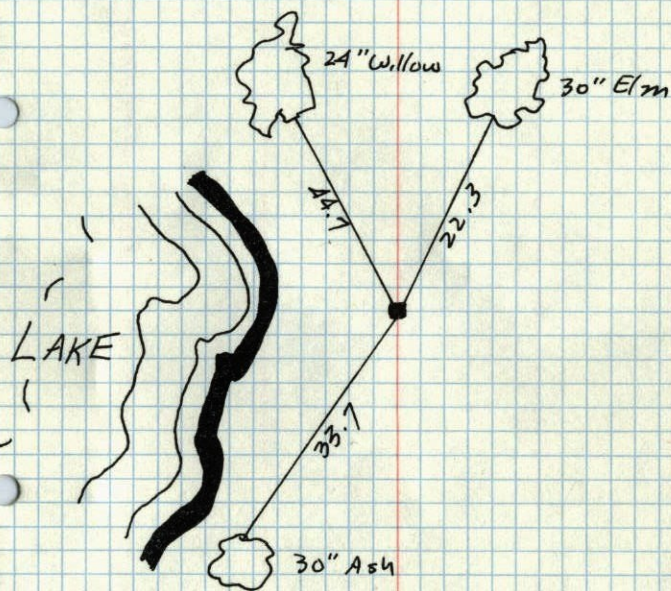


8 July 63
690 #2
J. Oliver
M.D. Anderson
R. Carlson

1946 53

M.C. 33 SEC. 36, T 31, R 22

GRANITE MAN.



JUNE 27, 1946
Cartwright