

CERTIFICATE OF LOCATION OF GOVERNMENT CORNER

County of Anoka

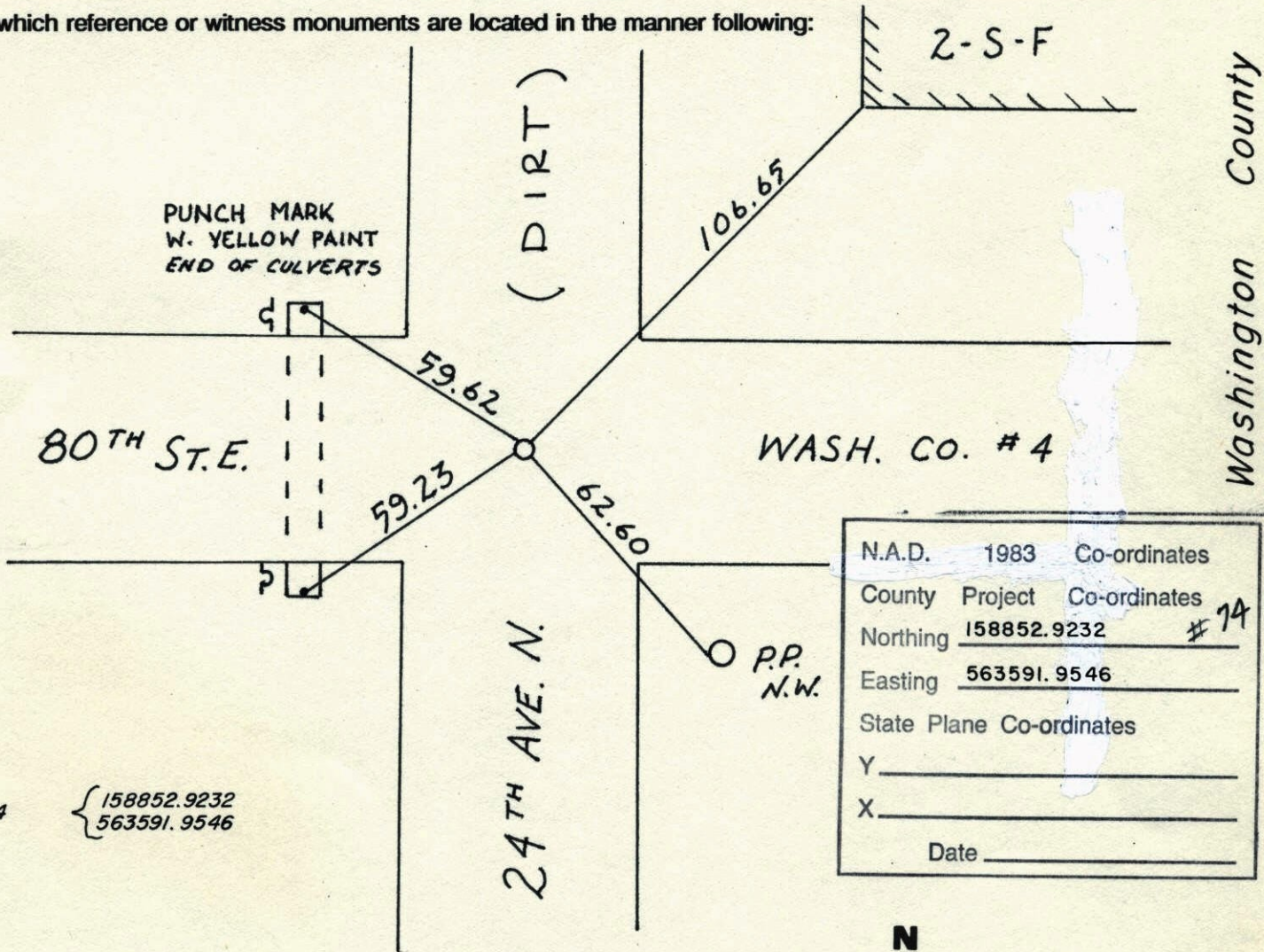
State of Minnesota

SOUTHEAST Corner of Sec. 1 Township 31 Range 22

I hereby certify that on the 7 day of AUG., 1964, I found the described corner which was evidenced by AXLE SHAFT

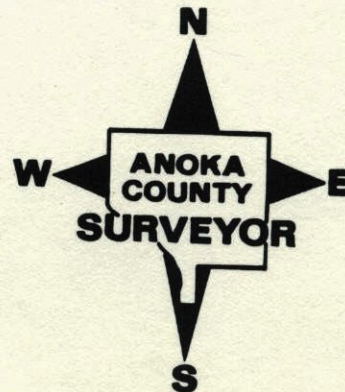
and I further certify that to perpetuate the location of said corner, I did, at the exact location thereof, place a permanent marker consisting of CAST IRON

which reference or witness monuments are located in the manner following:



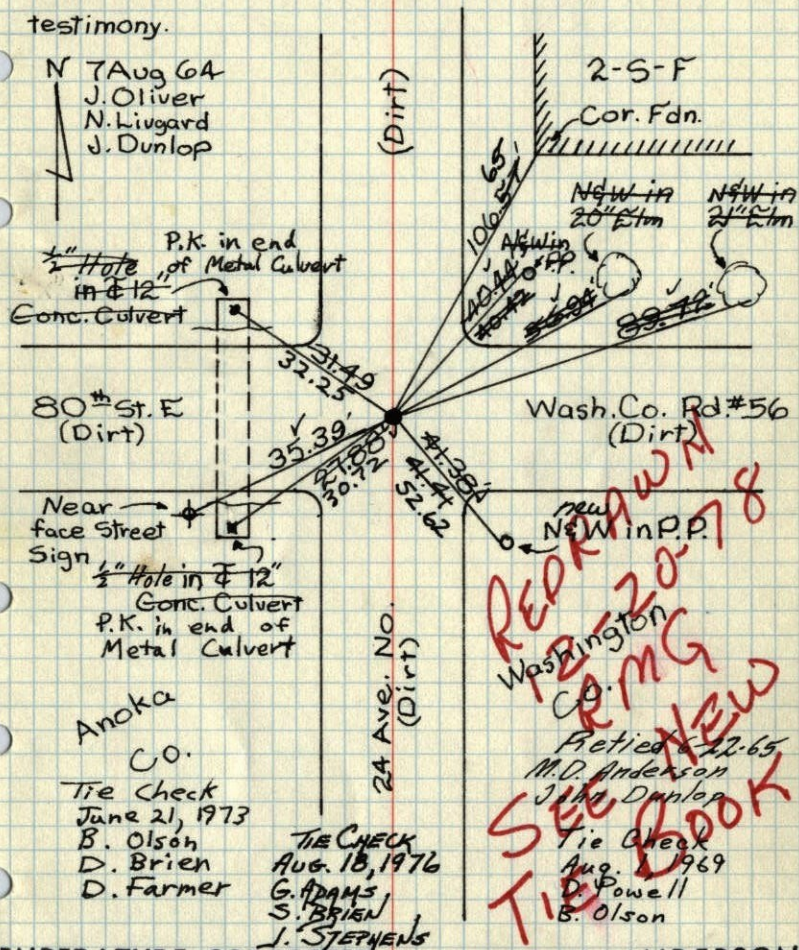
74 { 158852.9232
563591.9546

Revised date	Revised date	Revised date
10-24-91		
6-28-96		
2-3-98		



SE Cor Sec. 1, T31, R22

Found Axle Shaft down 20" alongside 3" Oak post (down 0.3'). Set Cast Iron Monument. Down 0.5' in R-L intersection. See field notes for testimony.



Anoka
Co.

Tie Check
June 21, 1973
B. Olson
D. Brien
D. Farmer

TIE CHECK
Aug. 18, 1976
G. ADAMS
S. BRIEN
J. STEPHENS

TEMPERATURE CORRECTED
AND HORIZONTALLY
TAPED MEASUREMENTS

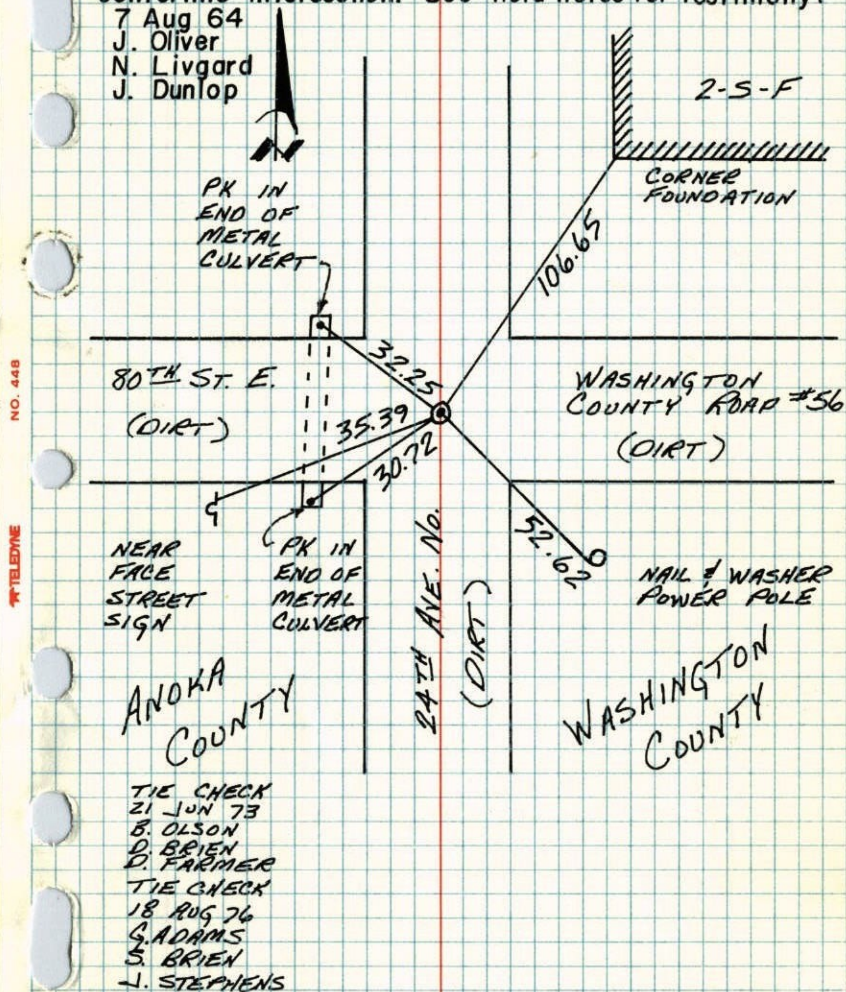
ROLAND W. ANDERSON
COUNTY SURVEYOR
ANOKA COUNTY, MINNESOTA

REKAWM
12-20-78
RMG
NEW
TIE BOOK

S.E. Corner Section I-T31-R22

Found axle shaft down 20" along side 3" oak post, (down 0.3'). Set Cast Iron Monument. Down 0.5' at centerline centerline intersection. See field notes for testimony.

7 Aug 64
J. Oliver
N. Livgard
J. Dunlop



ANOKA
COUNTY

TIE CHECK
21 JUN 73
B. OLSON
D. BRIEN
D. FARMER
TIE CHECK
18 AUG 76
G. ADAMS
S. BRIEN
J. STEPHENS

TEMPERATURE CORRECTED
AND HORIZONTALLY
TAPED MEASUREMENTS

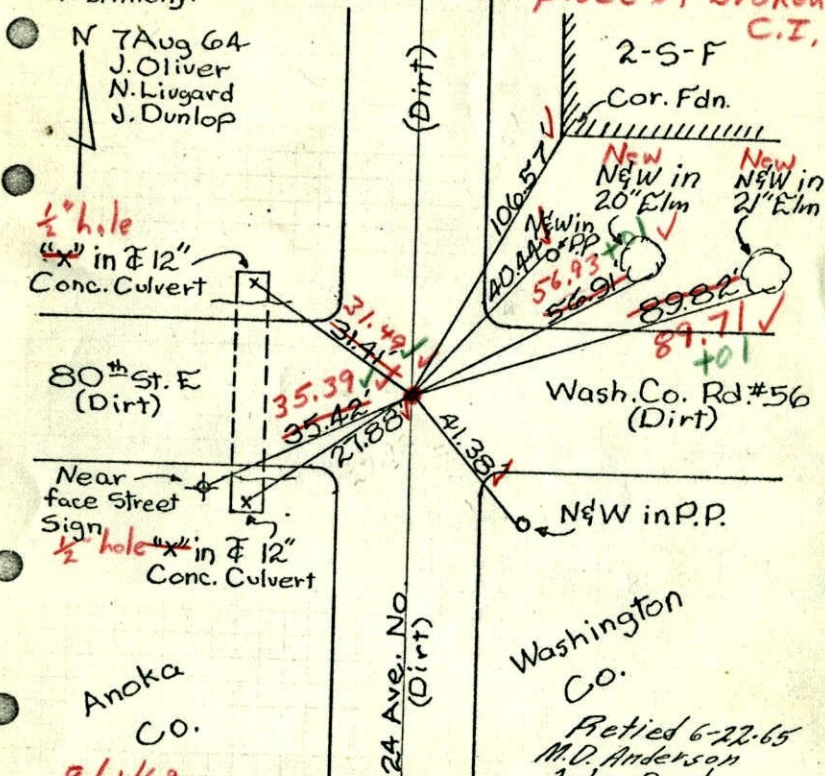
ROLAND W. ANDERSON
COUNTY SURVEYOR
ANOKA COUNTY, MINNESOTA

SE Cor Sec 1, T31, R22

1969 22

Found Axle Shaft down 20" alongside 3" Oak post (down 0.3'). Set Cast Iron Monument down 0.2' in E-E intersection. See field notes for testimony. *Set new C.I. in place of broken C.I.*

N 7 Aug 64
J. Oliver
N. Livgard
J. Dunlop



Anoka Co.
8/1/69
#5-70
D. Powell
B. Olson

TEMPERATURE CORRECTED
AND HORIZONTALLY
TAPED MEASUREMENTS

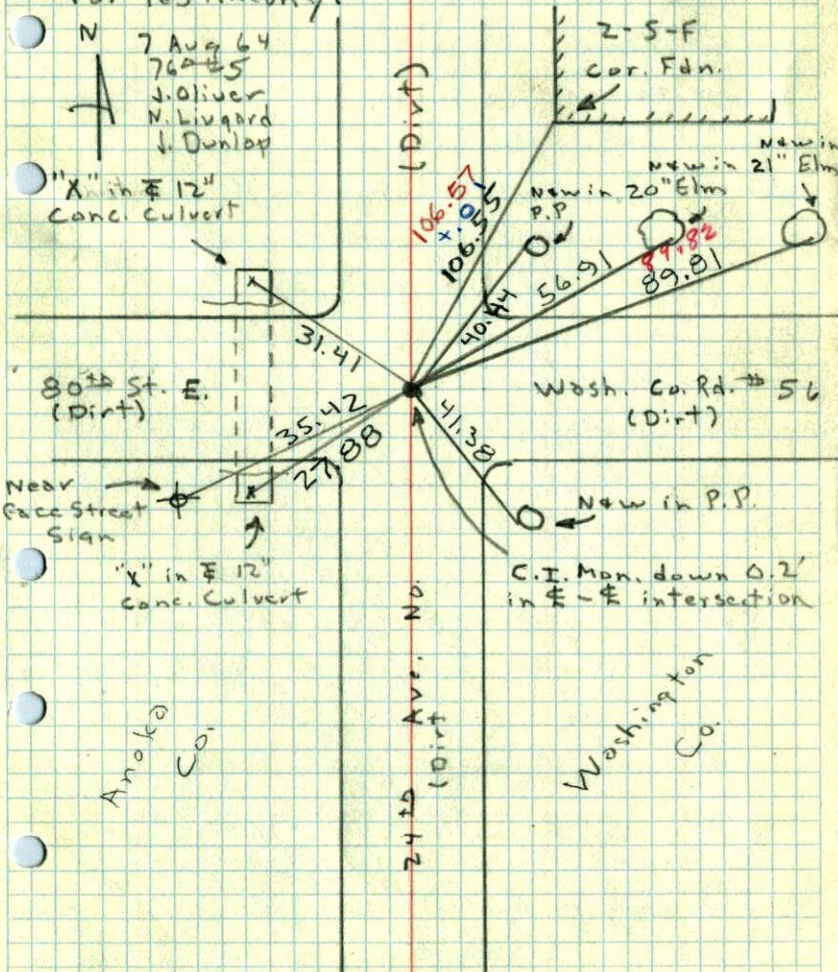
ROLAND W. ANDERSON
COUNTY SURVEYOR
ANOKA COUNTY, MINNESOTA

SE Cor Sec 1, T31, R22

1964

Found Axle Shaft down 20" alongside 3" Oak post (down 0.3'). Set Cast Iron Monument down 0.2' in E-E intersection. See field notes for testimony.

N 7 Aug 64
J. Oliver
N. Livgard
J. Dunlop



Anoka Co.

Washington Co.

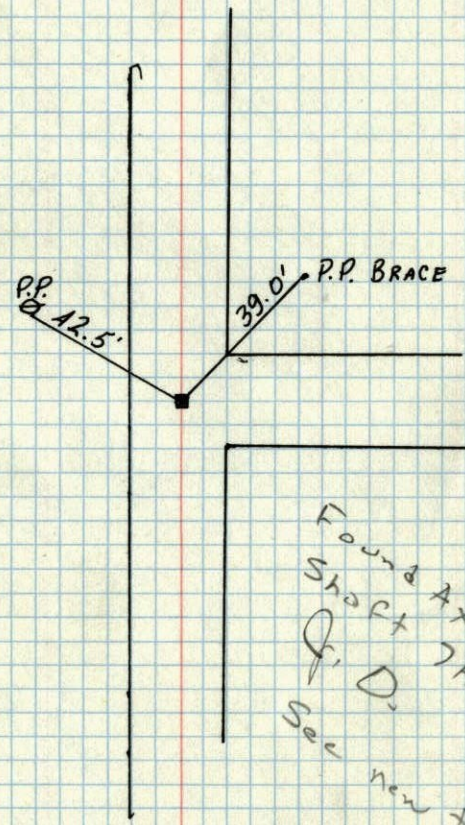
24th Ave. No. (Dirt)

SE
NE

1
SEC. 12, T 31, R 22

1964 9

Lead Pipe



Found Axle
Shaft 7/16 x 64
φ D.
See new tie Book

A.C.H.D.