

CERTIFICATE OF LOCATION OF GOVERNMENT CORNER

County of Anoka

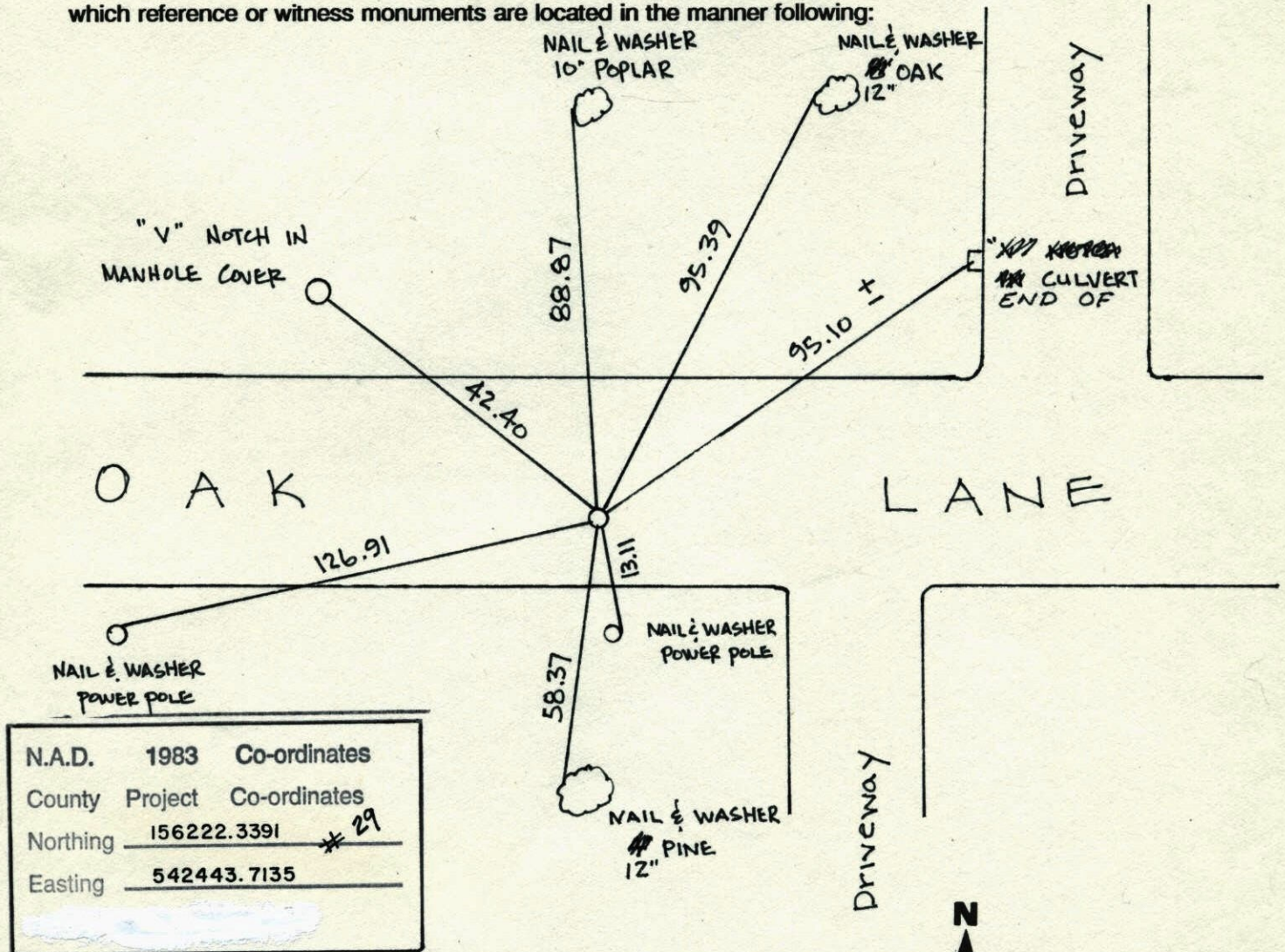
State of Minnesota

EAST QTR. Corner of Sec. 8 Township 31 Range 22

I hereby certify that on the 15 day of MARCH, 1962, I found the described corner which was evidenced by 1 1/2" IRON PIPE

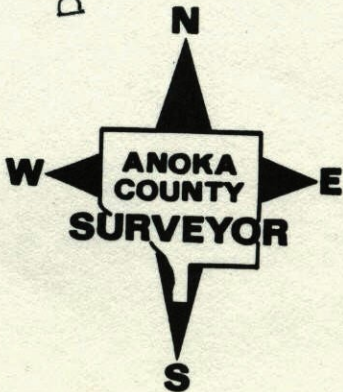
and I further certify that to perpetuate the location of said corner, I did, at the exact location thereof, place a permanent marker consisting of CAST IRON MONUMENT
6' ± SOUTH OF CENTERLINE

which reference or witness monuments are located in the manner following:



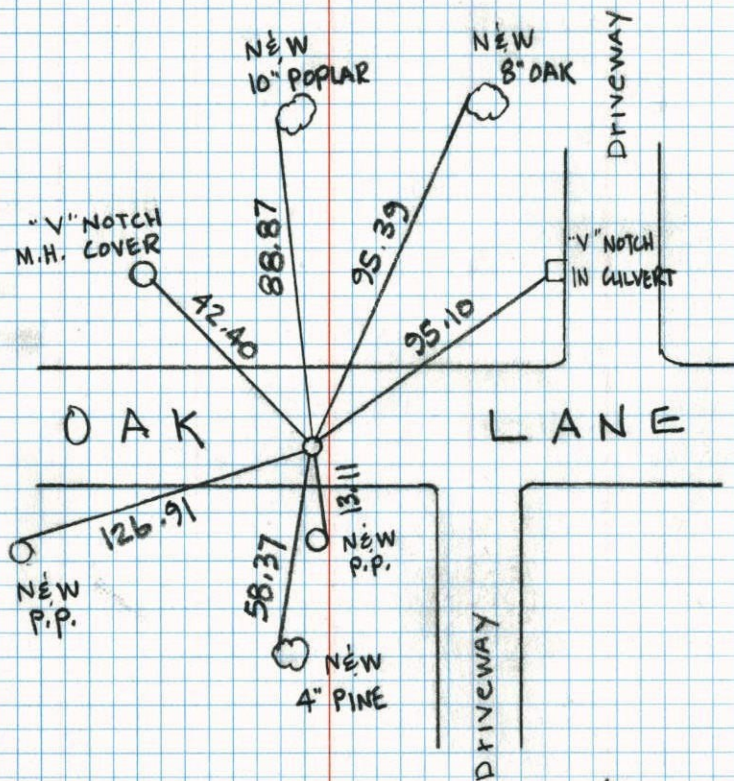
N.A.D.	1983	Co-ordinates
County	Project	Co-ordinates
Northing	156222.3391	* 29
Easting	542443.7135	

Revised date	Revised date	Revised date
12-24-90		
RAISED 5-26-92		
6-25-96		
2-13-98		



EAST QTR. SEC 8 T 31 R 22

CAST IRON MONUMENT

J.A.
J.D.

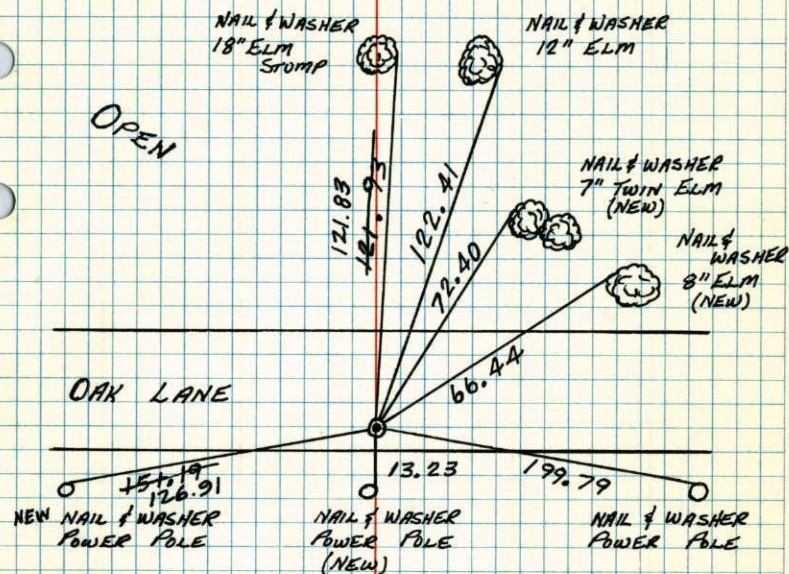
6/25/96

4
N

E 1/4 CORNER; SECTION 8, T31, R22

RETIRED CAST IRON MONUMENT. CAST IRON 6"±

SOUTH OF CENTERLINE OAK LANE.

SEPT. "77"
H. LARSON
S. BRIEN
B. GOETZKO
J. STEVENS
J. BOETTCHERTIE CHECK
8-7-80
B. STEPHENS
P. ROSS
P. HORNBYTEMPERATURE CORRECTED
AND HORIZONTALLY
TAPED MEASUREMENTSROLAND W. ANDERSON
COUNTY SURVEYOR
ANOKA COUNTY, MINNESOTA

E 1/4 Cor. Sec. 8 T31 R22

Retired cast iron monument

C.I. 6'±
South of

NW
18" elm
stump

NW
12" elm

NW
7" elm (new)

NW (new)
8" elm

Open

OAK Lane

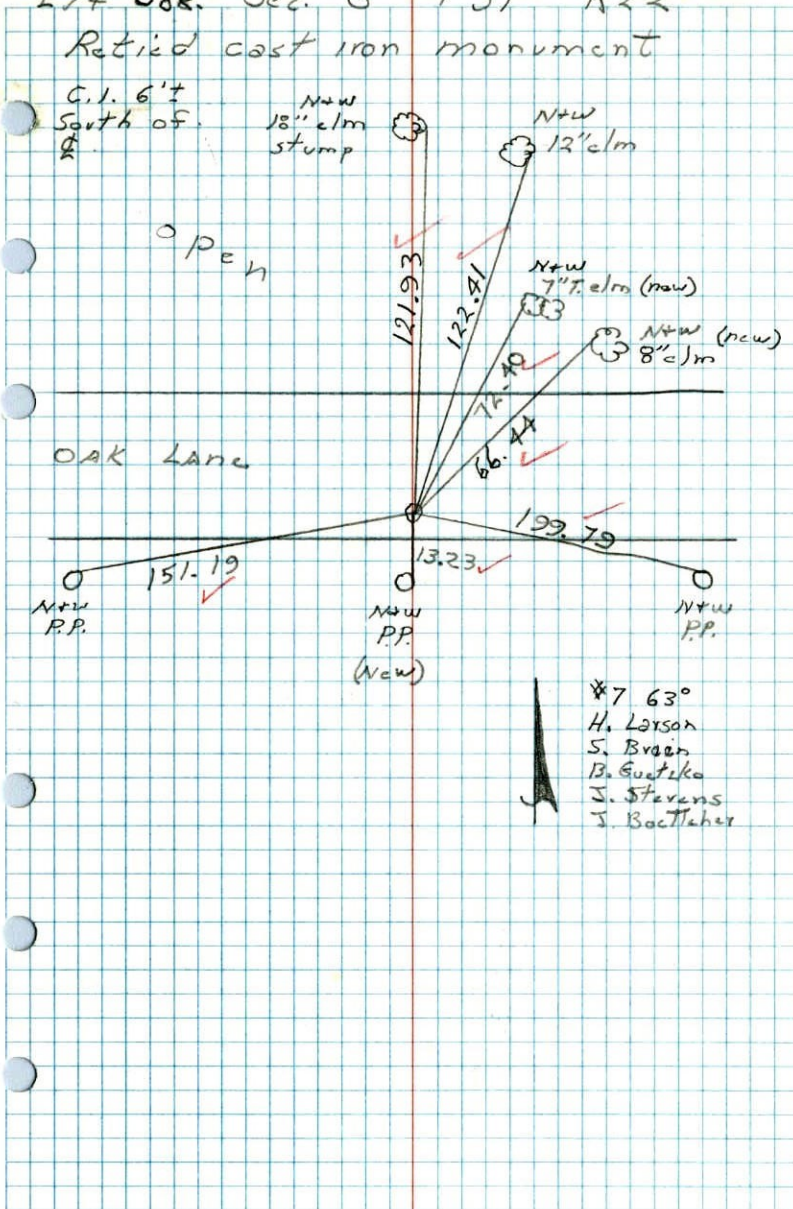
NW
P.P.

NW
P.P.
(New)

NW
P.P.

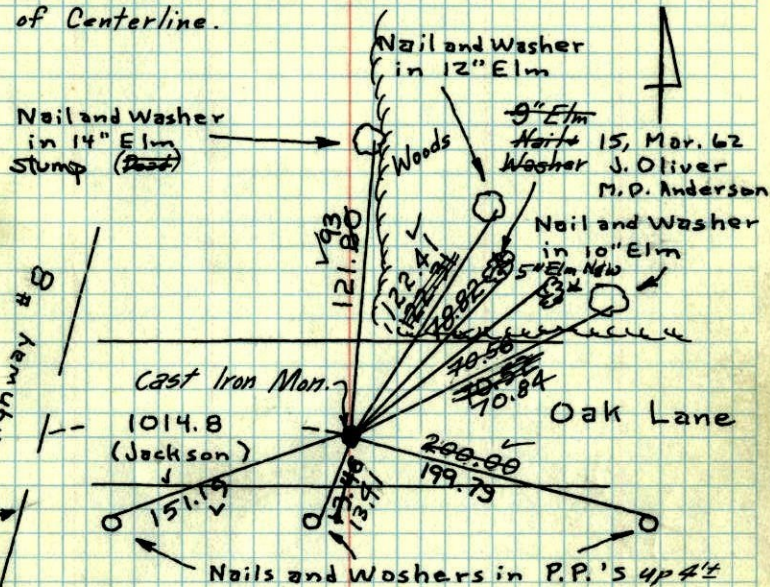


*7 63°
H. Larson
S. Brien
B. Gustika
J. Stevens
J. Baetzler



E 1/4 Cor. Sec. 8, T31, R22

Found Bent 1 1/2" I.P., Straightened up,
dug out and replaced with Cast Iron
Monument down ~~0.6'~~ 6'± South N
of Centerline.



Replaced Cast Iron
Monument
June 26, 1967
D. Potter
D. Powell

Tie Check
Aug. 18, 1969
R. A. Olson
R. O. Brien

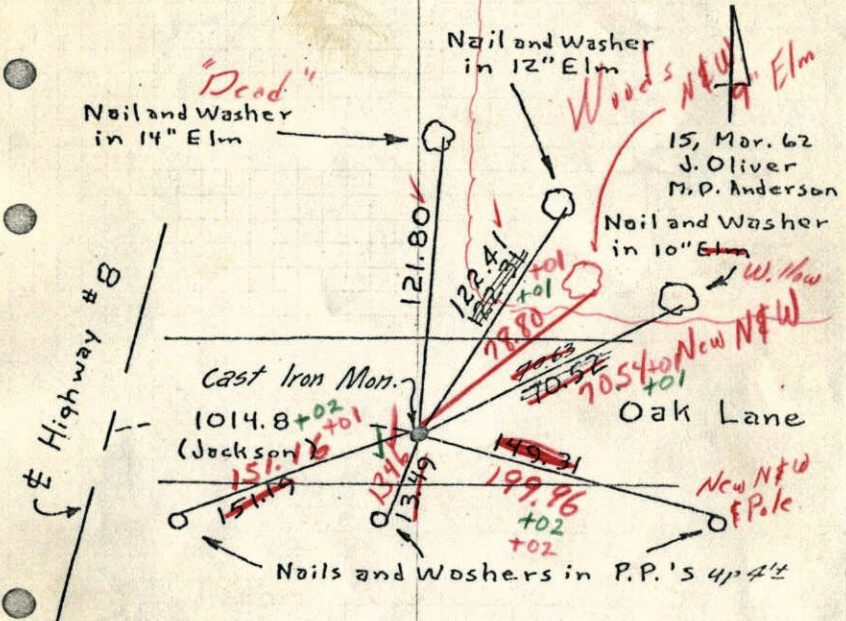
Tie Check
June 19, 1973
B. Olson
R. Brien
D. Farmer

Retired 7/9/65
M. D. Anderson
John Dunlap
TIE CHECK
R. Spangler
D. Dyer
S. Brien

ROLAND W. ANDERSON COUNTY SURVEYOR ANOKA COUNTY, MINNESOTA

TEMPERATURE CORRECTED AND HORIZONTALLY TAPED MEASUREMENTS

XE
 1/4 Cor. Sec. 8, T31, R22
 Found Bent 1 1/2" I.P., Straightened up,
 dug out and replaced with Cast Iron
 Monument down ~~0.5'~~ **0.6' ± 5 N E**



Replaced Cast Iron Monument
 June 26, 1967
 D. Potter
 D. Powell

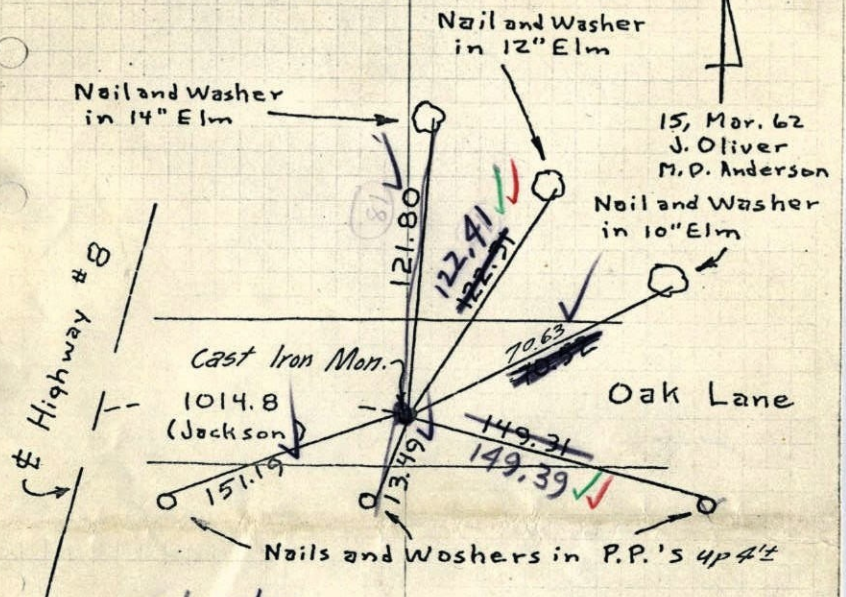
Retied 7/9/65
 M.D. Anderson
 John Dunlap

8-18-69
 Tape #5
 80' ✓
 R.A. Olson
 R.O. Brien

DERSON
 EYOR
 MINNESOTA

TEMPERATURE CORRECTED
 AND HORIZONTALLY
 TAPED MEASUREMENTS

ML
 1/4 Cor. Sec. 8, T31, R22
 Found Bent 1 1/2" I.P., Straightened up,
 dug out and replaced with Cast Iron
 Monument down ~~0.5'~~ **0.6'**



6/26/67
 D. Potter
 D. Powell
 #7-70° ✓

Retied 7/9/65
 M.D. Anderson
 John Dunlap

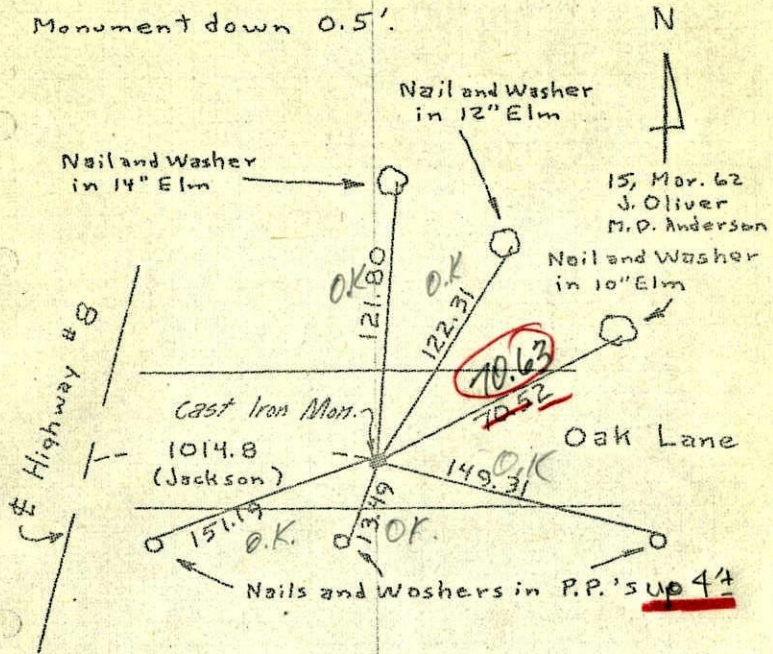
Replaced C.I. Mon.

ROLAND W. ANDERSON
 COUNTY SURVEYOR
 ANOKA COUNTY, MINNESOTA

TEMPERATURE CORRECTED
 AND HORIZONTALLY
 TAPED MEASUREMENTS

E 1/4 Cor. Sec. 8, T31, R22
 Found Bent 1 1/2" I.P., Straightened up,
 dug out and replaced with Cast Iron
 Monument down 0.5'.

1965



Tie check
 July 9, 1965
 M.D. Anderson
 J. Dunlop

Temp. 67°
 Taped 5

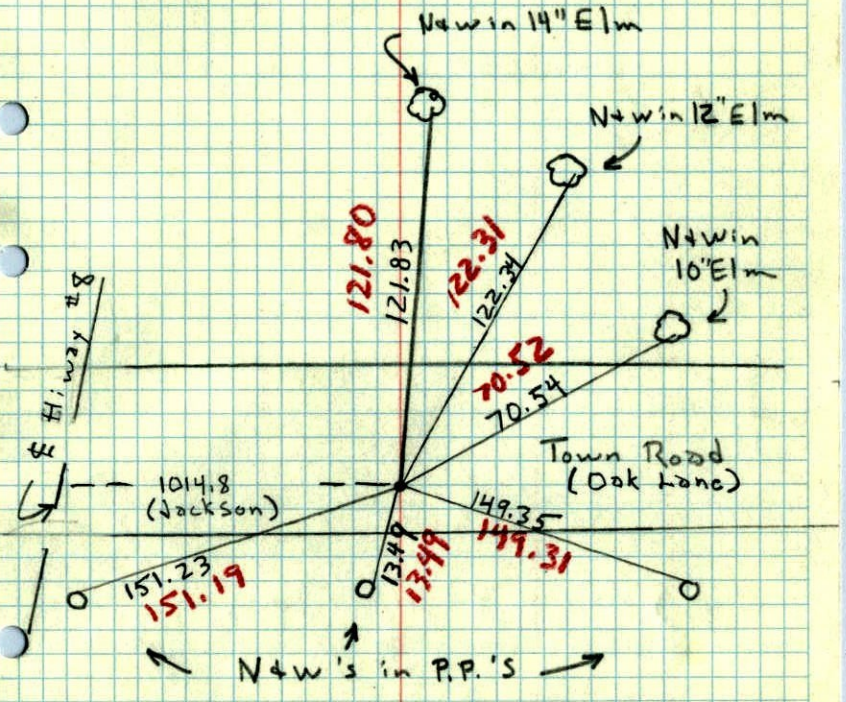
ROLAND W. ANDERSON
 COUNTY SURVEYOR
 ANOKA COUNTY, MINNESOTA

TEMPERATURE CORRECTED
 AND HORIZONTALLY
 TAPED MEASUREMENTS

entered

E 1/4 Cor. Sec. 8, T31, R22
 Found Bent 1 1/2" I.P., Straightened up,
 dug out & replaced with C.I. Mon, down 0.5'

1962



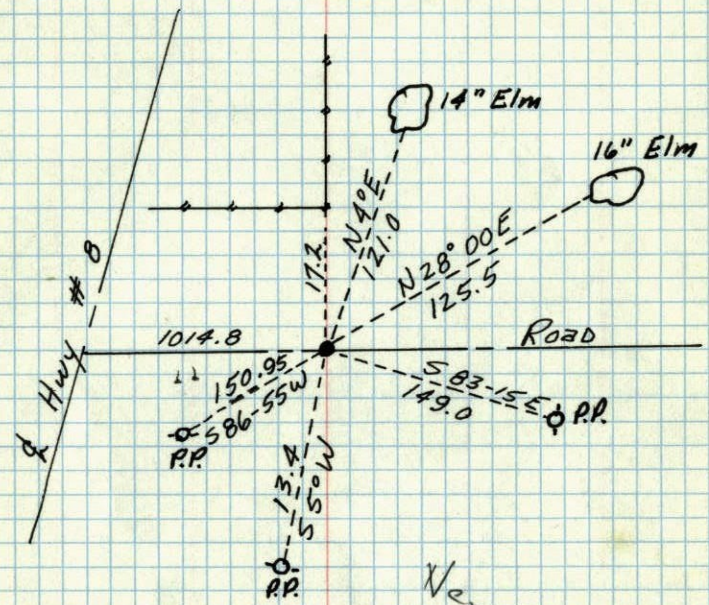
Mar 15, 1962
 75°
 J. Oliver
 M.D. Anderson
 A. Sanford
 J. Prunick



1949^{1/4}/₆

E 1/4 Sec. 8, T31, R22

6/8/49 1 1/2" I.P. Jackson



New Tics in
New Tic Book