

# CERTIFICATE OF LOCATION OF GOVERNMENT CORNER

County of Anoka

State of Minnesota

## Northeast Corner of Sec. 18 Township 31 Range 22

On the 28th day of February, 1963, the described corner was evidenced by a 4"X4" concrete monument

and to perpetuate the location of said corner, at the exact location thereof, a permanent marker was placed consisting of a cast iron monument

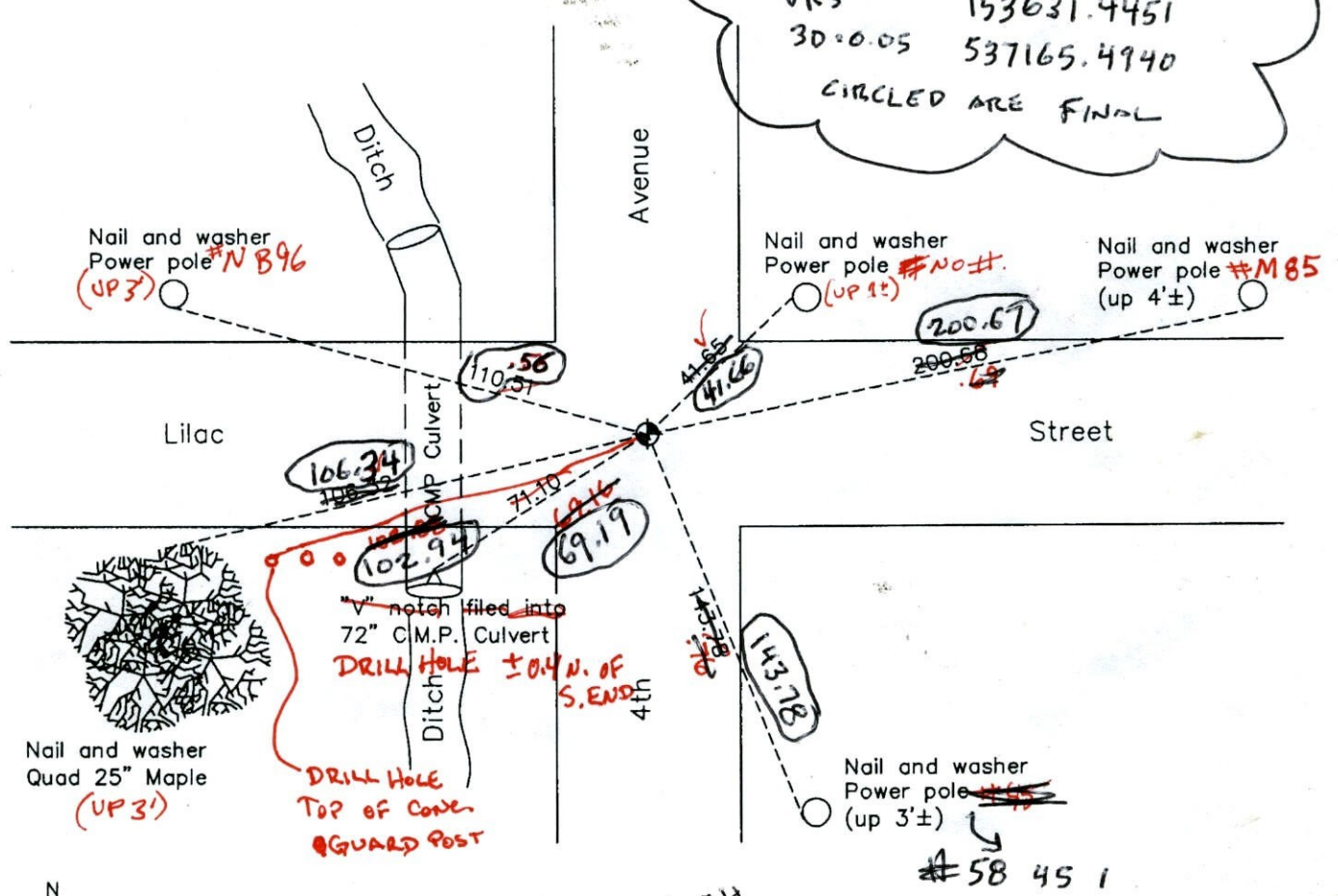
AND on the 15th day of June, 2010, said permanent marker was found and the ties were updated

Updated reference ties are as shown below.

8-18-13 JS SH SS  
SET CIM & RETIED W/ TOTAL

VRS 153631.4451  
30°0.05 537165.4940

CIRCLED ARE FINAL



N

W ANOKA COUNTY SURVEYOR E

S

Revision Date

1/04/11

N.A.D. 1983 Coordinates  
(1996 Adjustment)

County Project Coordinates	
Northing	153631.4434
Easting	537165.4893
Date	1/26/96

I hereby certify that this United States public land survey monument record is correct and complete to the best of my knowledge and belief.

Date 1/04/11

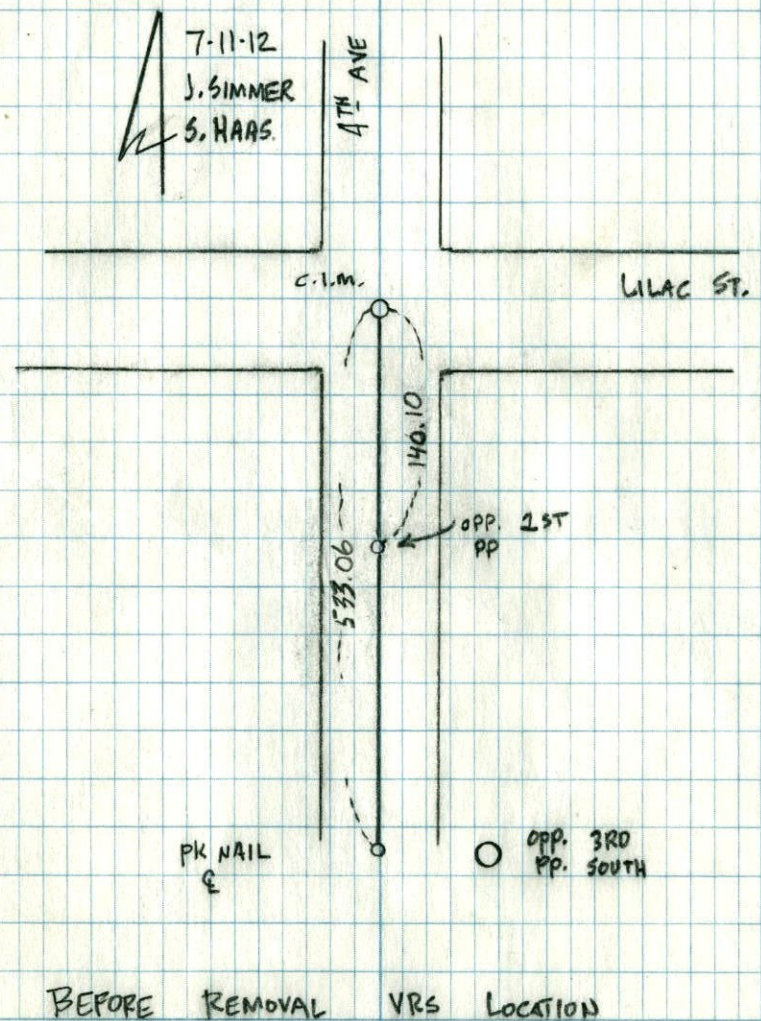
Larry D. Hoium, Anoka County Surveyor  
 Minnesota License Number 18165

N 0.04  
W 0.05



NE COR SEC 18 T31 R22

REMOVED CIM FOR ROAD CONST.  
T/T + SWING TIES VRS LOCATION



BEFORE REMOVAL VRS LOCATION

3D Q = 0.03	N8	153631.4220
	E8	537165.4500



# CERTIFICATE OF LOCATION OF GOVERNMENT CORNER

County of Anoka

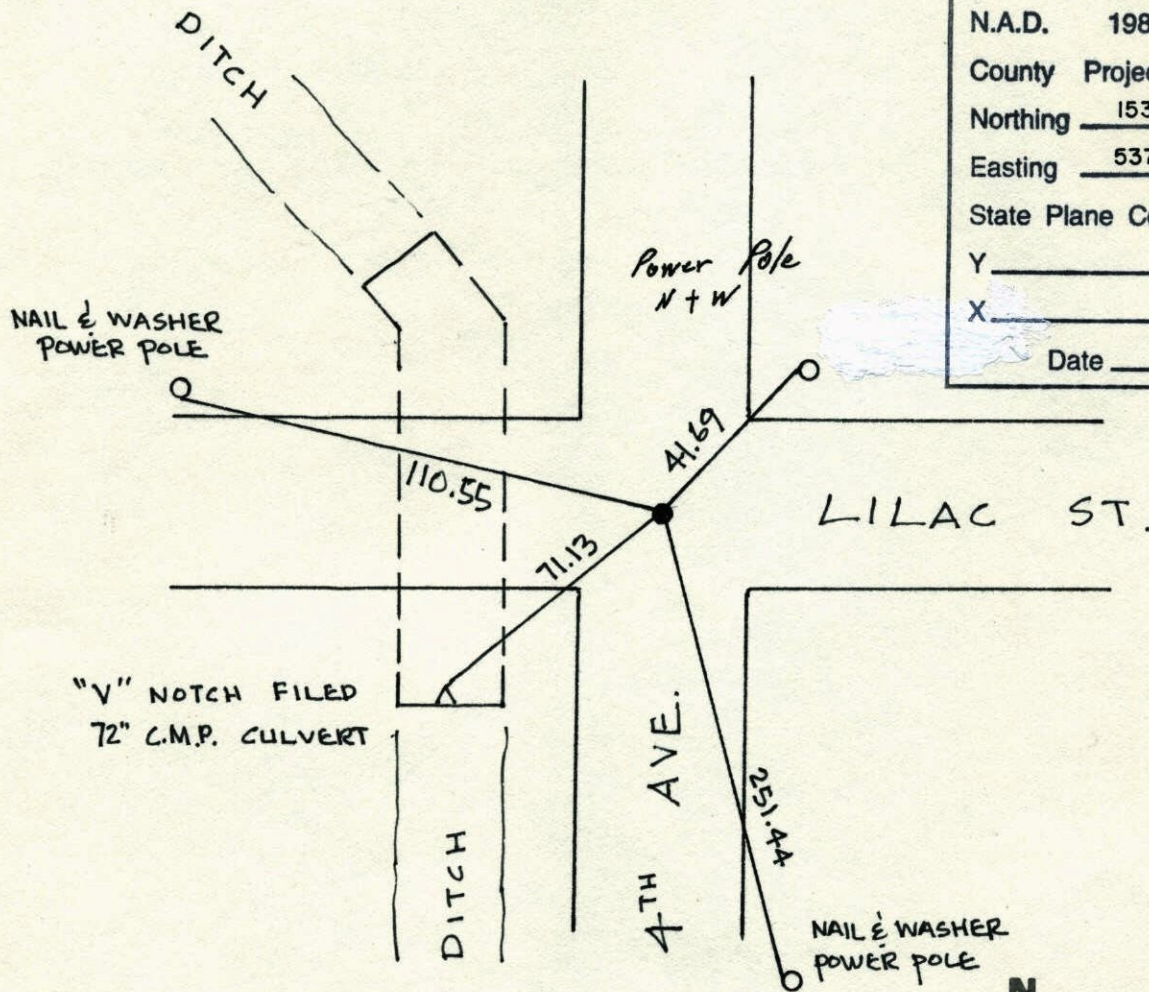
State of Minnesota

NORTHEAST            Corner of Sec. 18 Township 31 Range 22

I hereby certify that on the 28 day of FEB., 19 63, I found the described corner which was evidenced by 4" x 4" CONCRETE MONUMENT

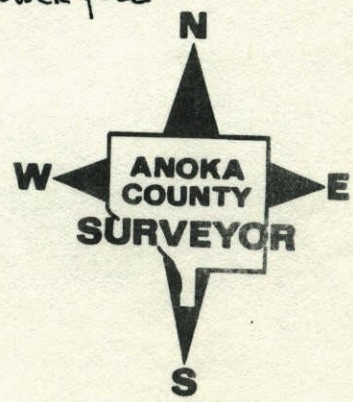
and I further certify that to perpetuate the location of said corner, I did, at the exact location thereof, place a permanent marker consisting of CAST IRON MONUMENT

which reference or witness monuments are located in the manner following:



N.A.D.	1983	Co-ordinates
County	Project	Co-ordinates
Northing	153631.4434	9b
Easting	537165.4893	*
State Plane Co-ordinates		
Y	_____	
X	_____	
Date	_____	

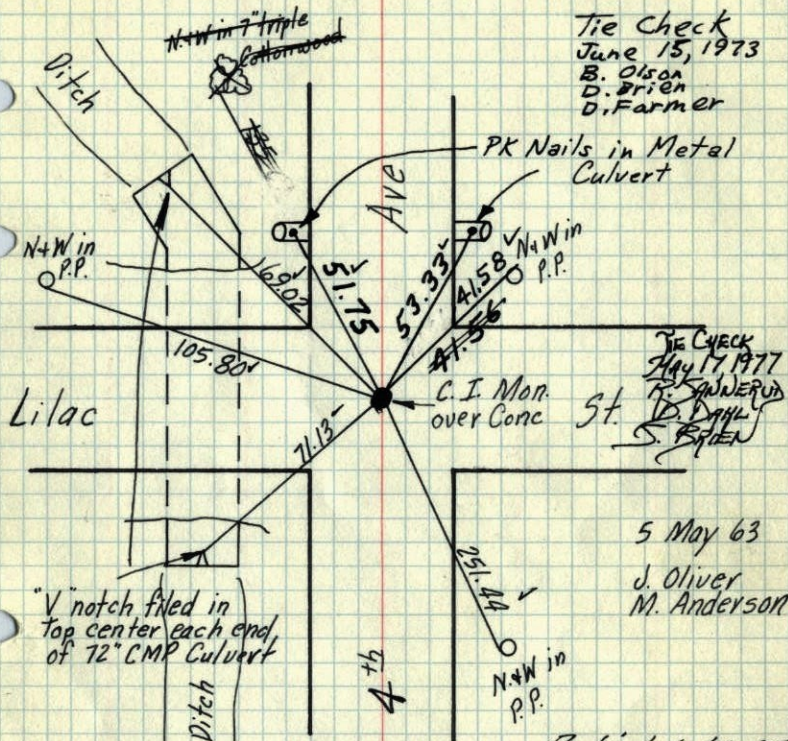
Revised date	Revised date	Revised date
11-5-90		
8-29-91		
12-26-96		
1-26-96		





NE Cor. Sec. 18 T31, R22

Set Cast Iron Monument flush with  
blacktop over Concrete Monument  
PK Nails 2.00' North + East.



Tie Check  
June 15, 1973  
B. Olson  
D. Brien  
D. Farmer

Tie Check  
May 17, 1977  
R. SWANERUD  
D. DAHL  
S. Brien

5 May 63  
J. Oliver  
M. Anderson

Retied 6-14-65  
M.P. Anderson  
John Dunlop

TEMPERATURE CORRECTED  
AND HORIZONTALLY  
TAPED MEASUREMENTS

Tie Check  
Aug. 14, 1969  
R. A. Olson  
R. Brien

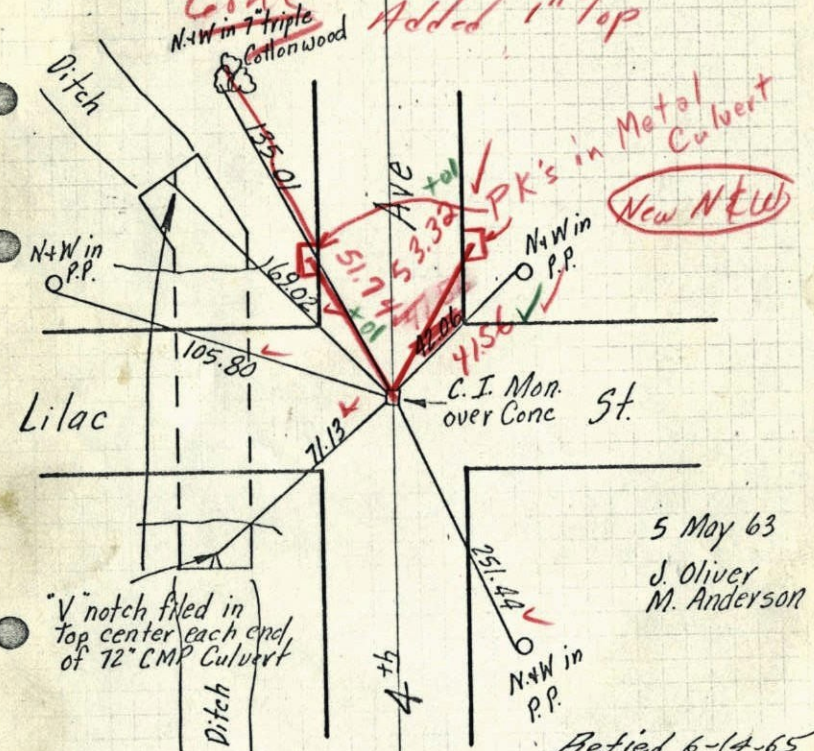
ROLAND W. ANDERSON  
COUNTY SURVEYOR  
ANOKA COUNTY, MINNESOTA

TIE CHECK  
8-8-80  
B. STEPHENS  
P. ROSS  
P. HORNBLY

NE Cor. Sec. 18 T31, R22

Set Cast Iron Monument flush with  
blacktop over Concrete Monument

Set PK's 2' NEE  
Cone Added 1" Top



PK's in Metal Culvert  
New NEE's

5 May 63  
J. Oliver  
M. Anderson

Retied 6-14-65  
M.P. Anderson  
John Dunlop

TEMPERATURE CORRECTED  
AND HORIZONTALLY  
TAPED MEASUREMENTS

ROLAND W. ANDERSON  
COUNTY SURVEYOR  
ANOKA COUNTY, MINNESOTA

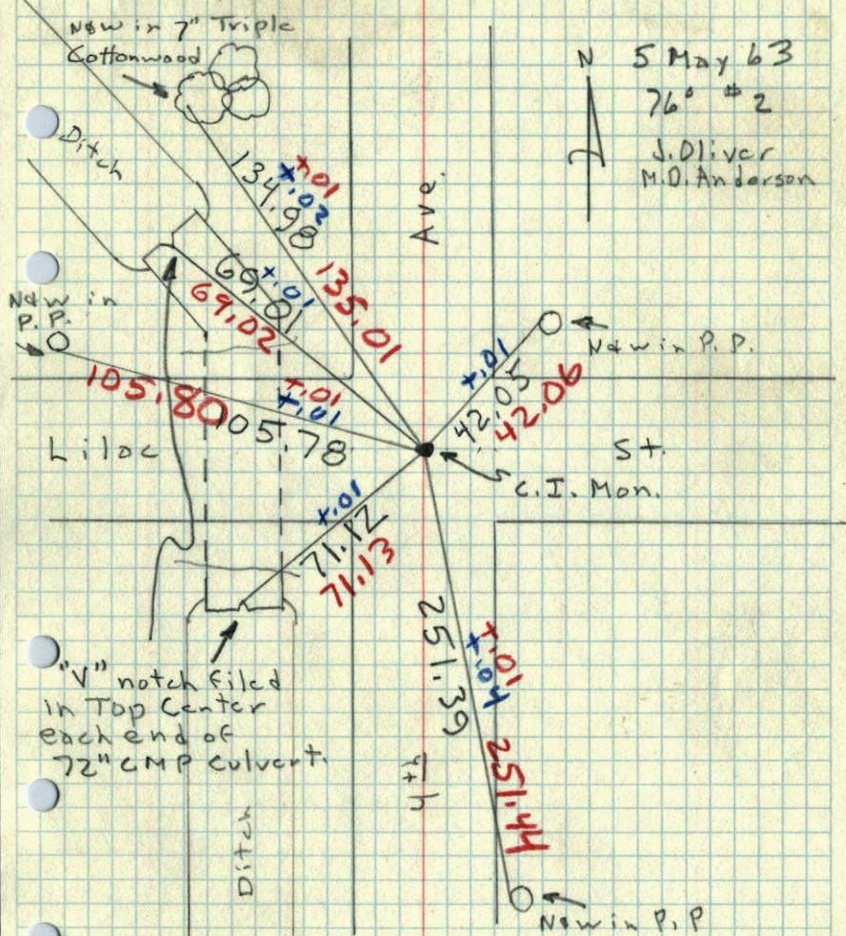
8-14-69  
Tape #5V  
800.1



1963

NE Cor. Sec. 18, T31, R22

Set Cast Iron Monument Flush with  
blacktop over Concrete Monument



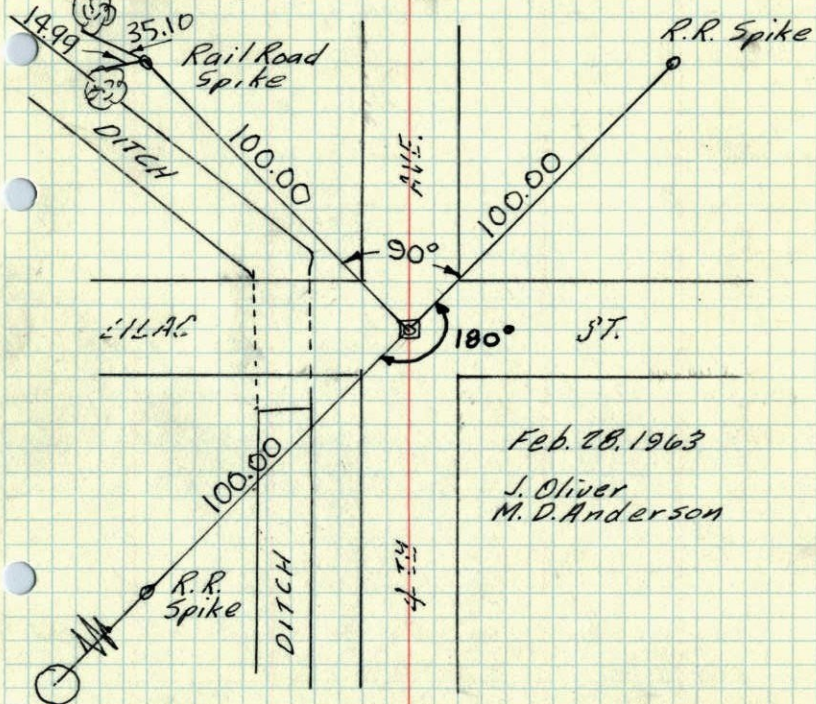
1963<sup>21</sup>

N.E. Cor. Sec. 18-T31-R22

4"x4" Conc. Monument 3.0' down  
top broken off.

Iron pipe over cone.

Retied for road const.



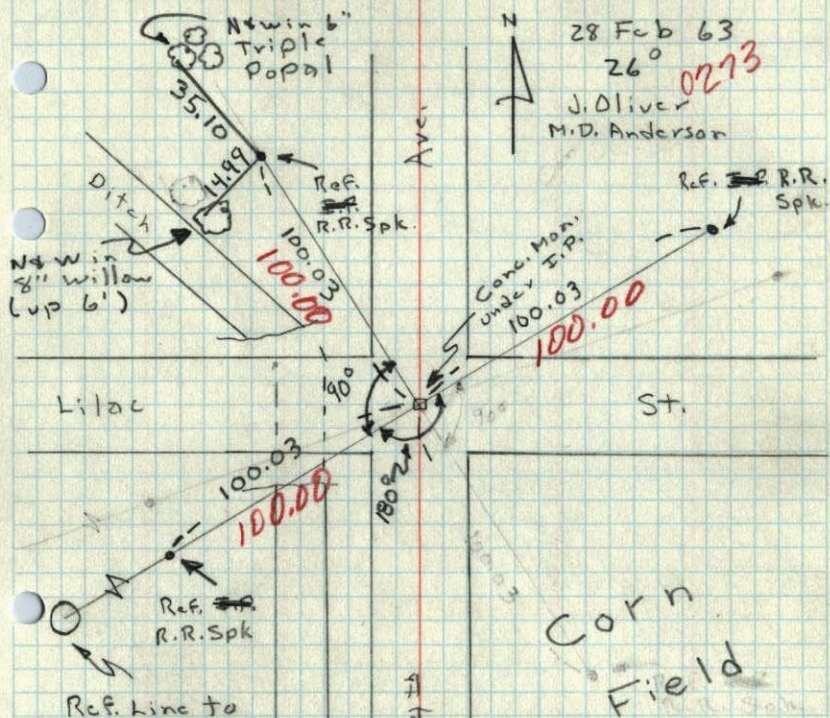
Ref line to sight on shaft supporting  
two Red Aircraft warning lights on  
top of Boy school Water Tower

This sight is also the same as North  
edge of Stand pipe on water tower.



1963

NE Cor. Sec. 18, T31, R22  
 4x4" Conc. Mon. down 3', top broken  
 off. I.P. over Conc. - Retied  
 because of Future road Const.

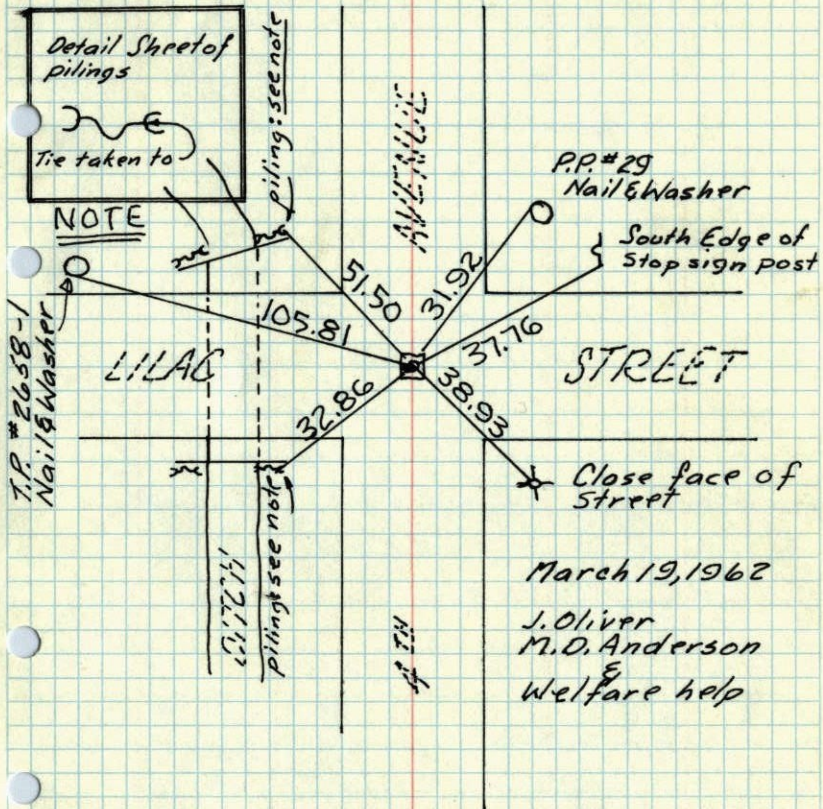


Ref. line to  
 Sight on Shaft  
 Supporting Two  
 Red Aircraft  
 Warning Lights on  
 Top of Boys School  
 Water Towers  
 This Sight is also  
 is Same as North  
 edge of main Column  
 of Water Tower

1962<sup>21</sup>

N.E. Cor. Sec. 18-31-22

found 4"x4" Conc. Mon. down 2' top broken off  
 Set 1/2" iron pipe over top center of Conc.



March 19, 1962  
 J. Oliver  
 M.D. Anderson  
 &  
 Welfare help

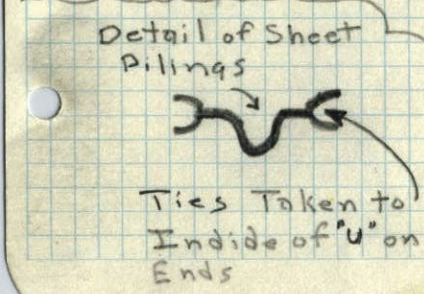
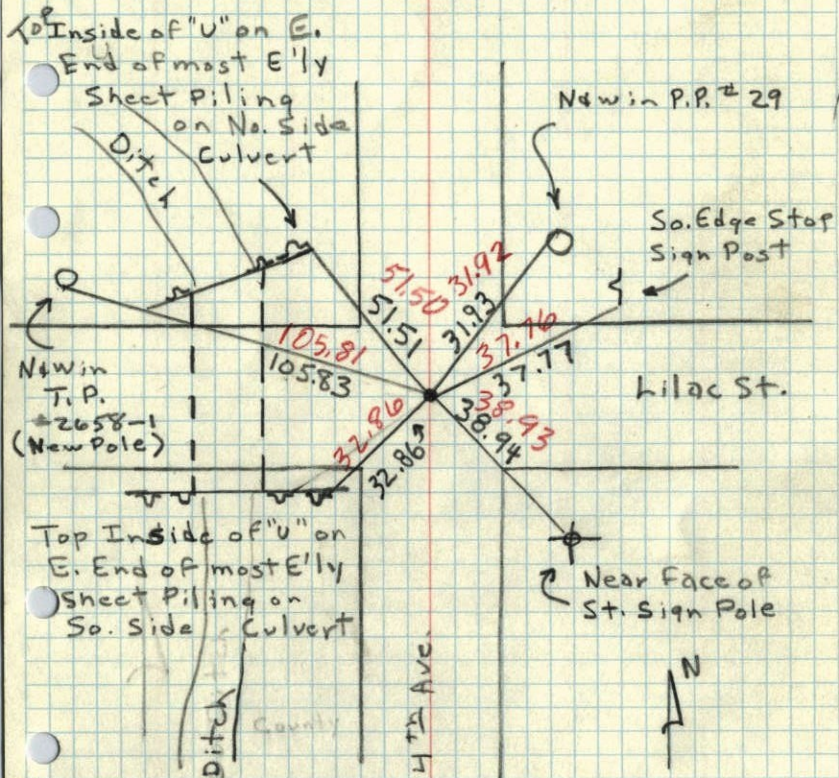
ROLAND W. ANDERSON  
 COUNTY SURVEYOR  
 ANOKA COUNTY, MINNESOTA  
 TEMPERATURE CORRECTED  
 AND HORIZONTALLY  
 TAPED MEASUREMENTS



1962<sup>24</sup>

NE Cor. Sec. 18, T 31, R 22

Found 4" Sq. Conc. Man down 20" - Top Broken Off - Set 3/4" I.P. on Top of Conc.

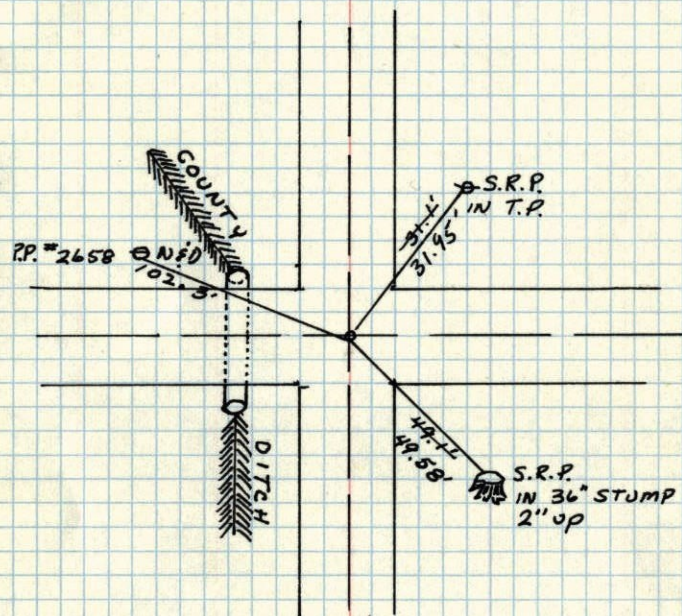


19 Mar 62  
 35°  
 J. Oliver  
 M. D. Anderson  
 R. Sanford  
 J. Punick

1958<sup>24</sup>

N.E. COR. OF SEC. 18, T 31, R 22

4" CONC. MAN. 0.8' Down, IRON ABOVE

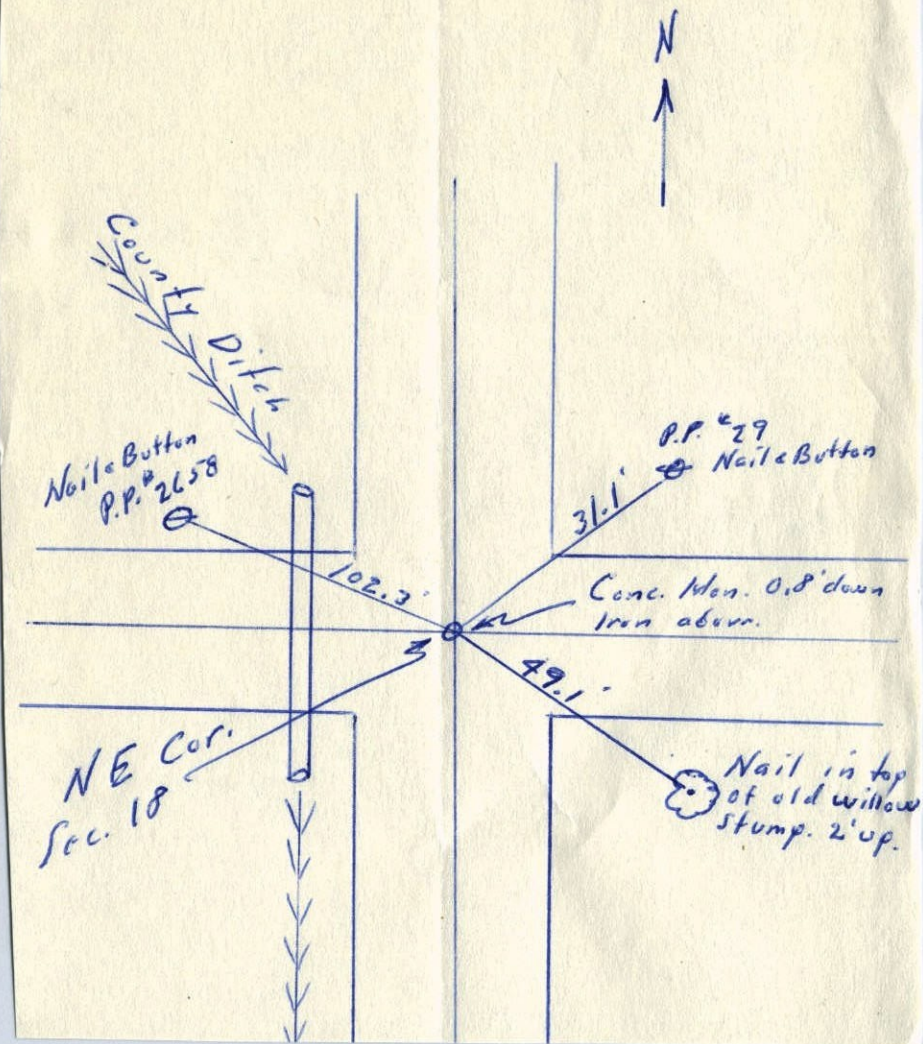


Feb. 20, 1958  
 G. HOPKINS  
 &  
 M.S.H.D.



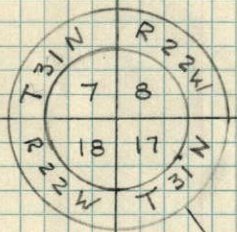
NE Cor Sec. 18, T 31, R 22 1958

Feb. 20, 1958 G. Hopkins



N.E. Cor Sec 18 T31 - R22

~~NO DATE~~



Due

