

# CERTIFICATE OF LOCATION OF GOVERNMENT CORNER

County of Anoka

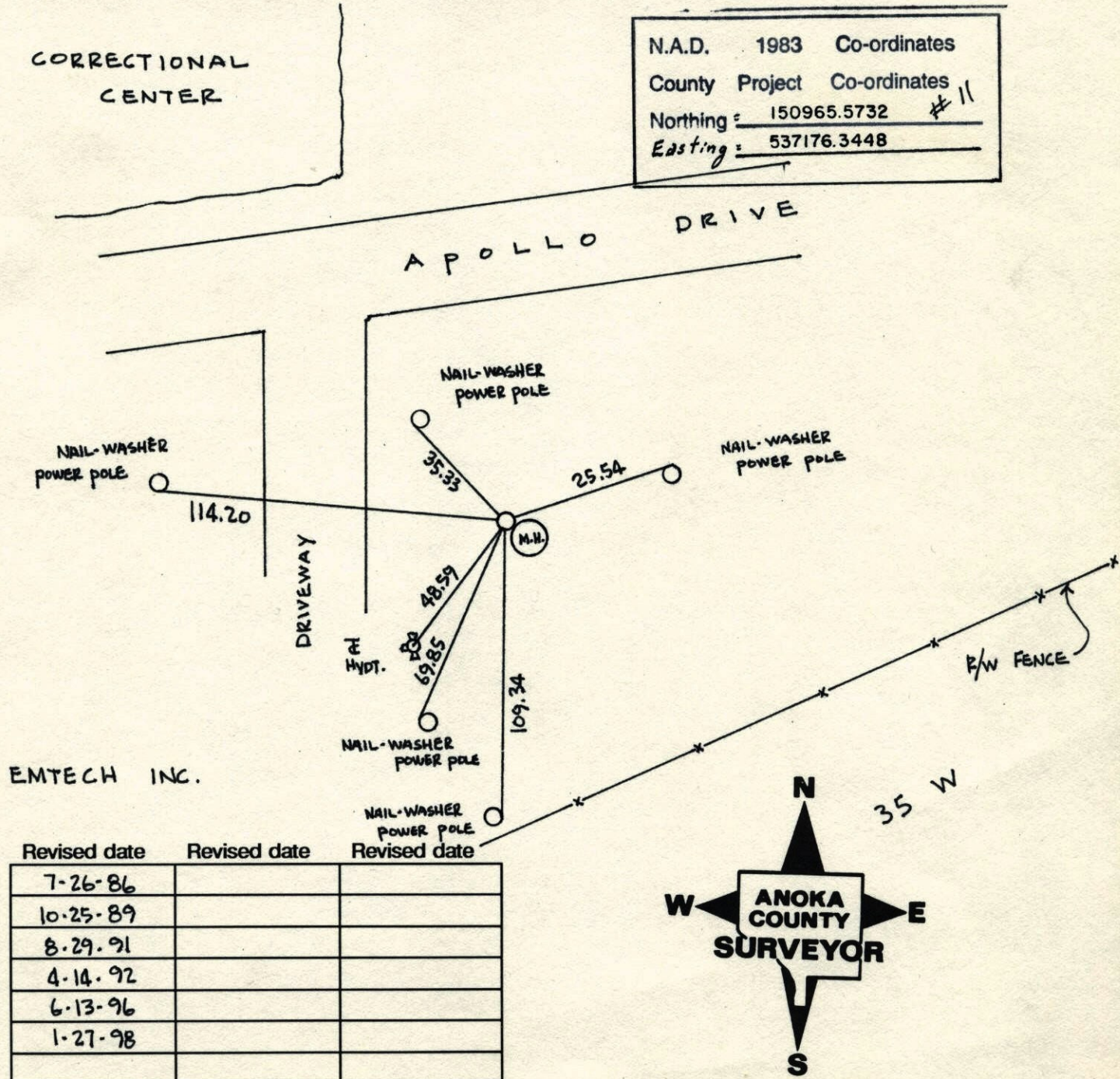
State of Minnesota

EAST 1/4 Corner of Sec. 18 Township 31 Range 22

I hereby certify that on the 12<sup>TH</sup> day of APRIL, 1962, I found the described corner which was evidenced by 3/4" IRON PIPE

and I further certify that to perpetuate the location of said corner, I did, at the exact location thereof, place a permanent marker consisting of PARTIAL CAST IRON MONUMENT IN CONCRETE NEXT TO MANHOLE

which reference or witness monuments are located in the manner following:





E 1/4 CORNER SECTION 18 T31 R22

RESET PARTIAL CAST IRON IN CONCRETE

NEXT TO MANHOLE

CORRECTIONAL  
CENTER

7-27-98

W. LARSON

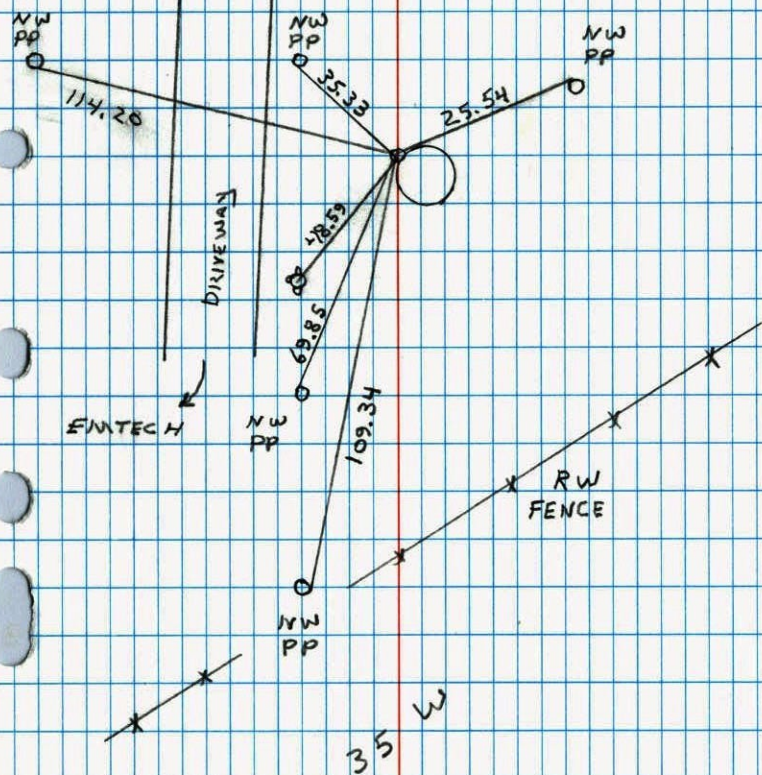
B. KLEINZ

S. SIMMER

APOLLO DR.

NO. 446

NATIONAL PRINTFAST



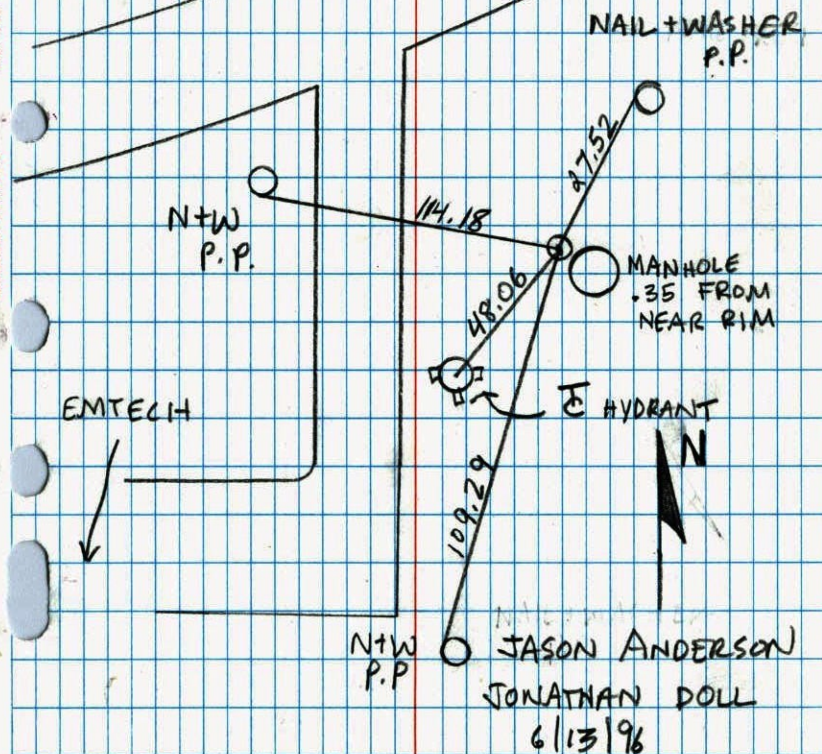
EAST 1/4 SEC. 18 TW. 31 R. 22

CAST IRON SET IN CONCRETE

MN  
CORRECTIONS4TH  
STREET

NO. 446

NATIONAL PRINTFAST













E 1/4 Cor. Sec. 18, T31, R22

36  
1965

Found 3/4" Pinched Iron Pipe down 0.5'

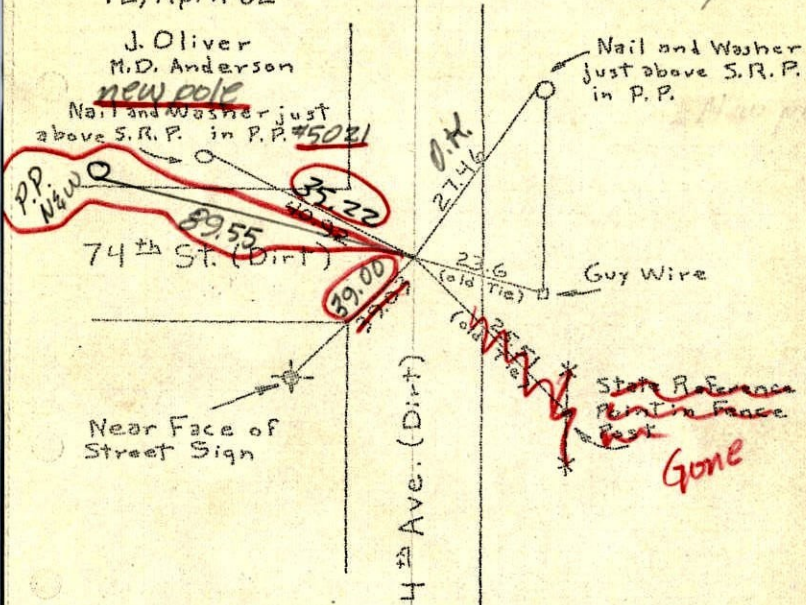


12, April 62

J. Oliver  
M.D. Anderson

~~new pole~~

Nail and Washer just above S.R.P. in P.P. #5021



Tie check 720 #5  
June 14, 1965  
M.D. Anderson  
J. Dunlap

ROLAND W. ANDERSON  
COUNTY SURVEYOR  
ANOKA COUNTY, MINNESOTA

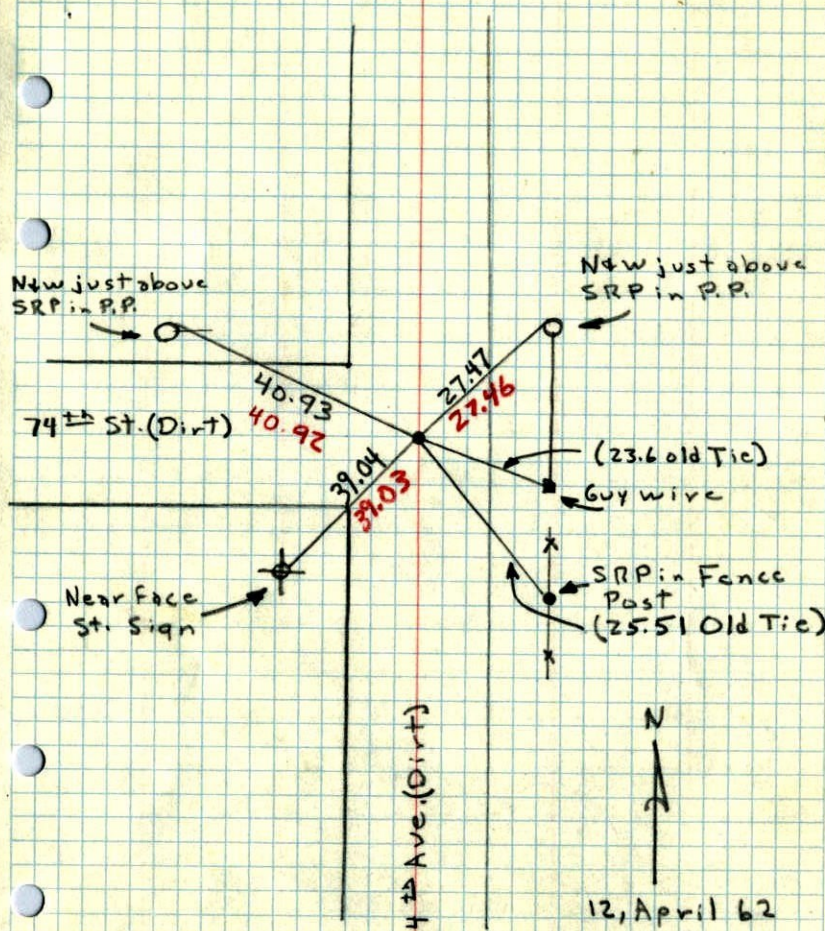
TEMPERATURE CORRECTED  
AND HORIZONTALLY  
TAPED MEASUREMENTS

entered

E 1/4 Cor. Sec. 18, T31, R22

23  
1962

Found 3/4" Pinched I.P. down 0.5'



12, April 62

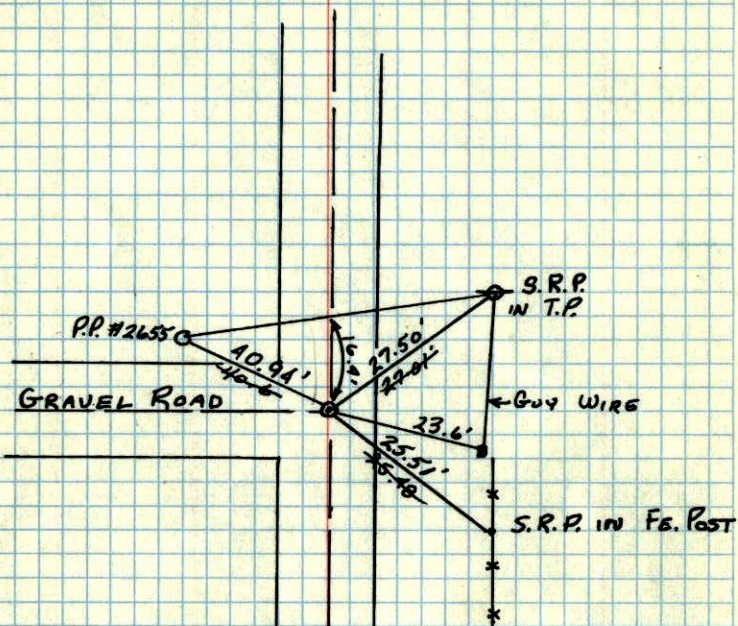
36°

J. Oliver  
M.D. Anderson



1958 23  
 E 1/4 COR. OF SEC. 18, T31, R22

1" PINCHED PIPE  
 Down

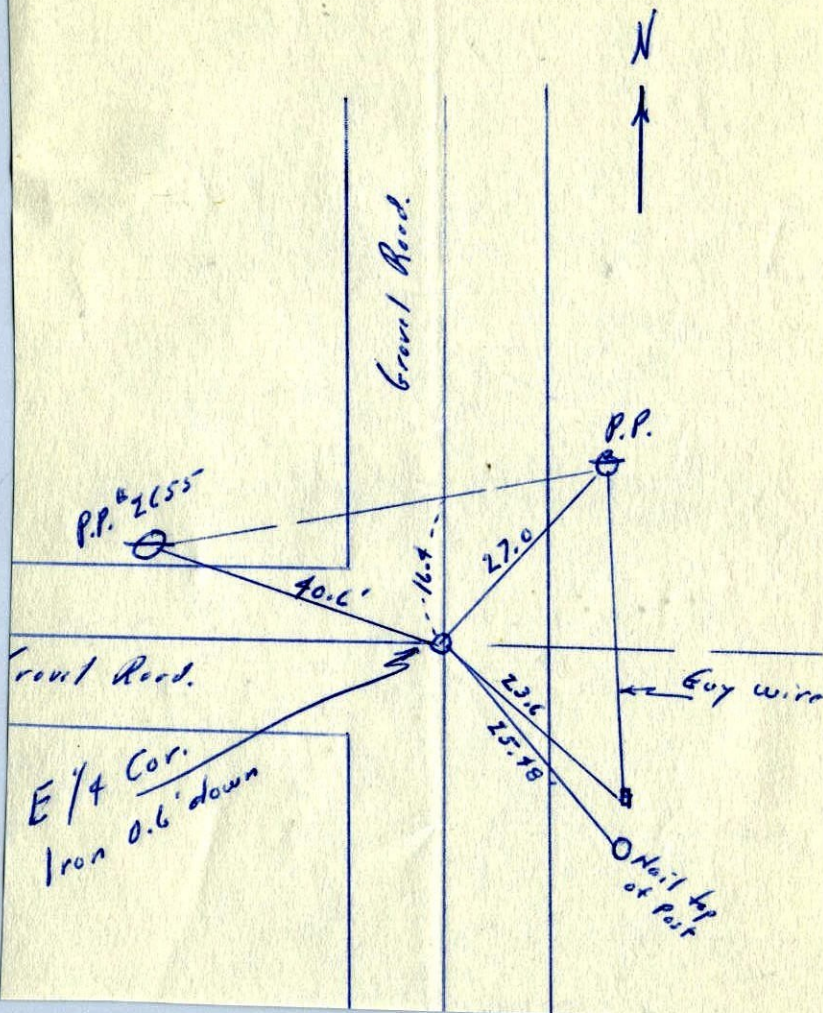


New Ties in  
 New Tie  
 Book

M.S.H.D.

G. HOPKINS  
 FEB. 24, 1958

E 1/4 Cor. Sec. 18, T31, R22  
 Feb. 24, 1958 G. Hopkins 1958



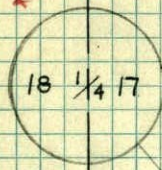
E 1/4 Cor.  
 Iron 0.6' down



E 1/4 COR. Sec. 18 T31-R22

REVIEW

~~NO DATE~~



T31N R22W

