

CERTIFICATE OF LOCATION OF GOVERNMENT CORNER

County of Anoka

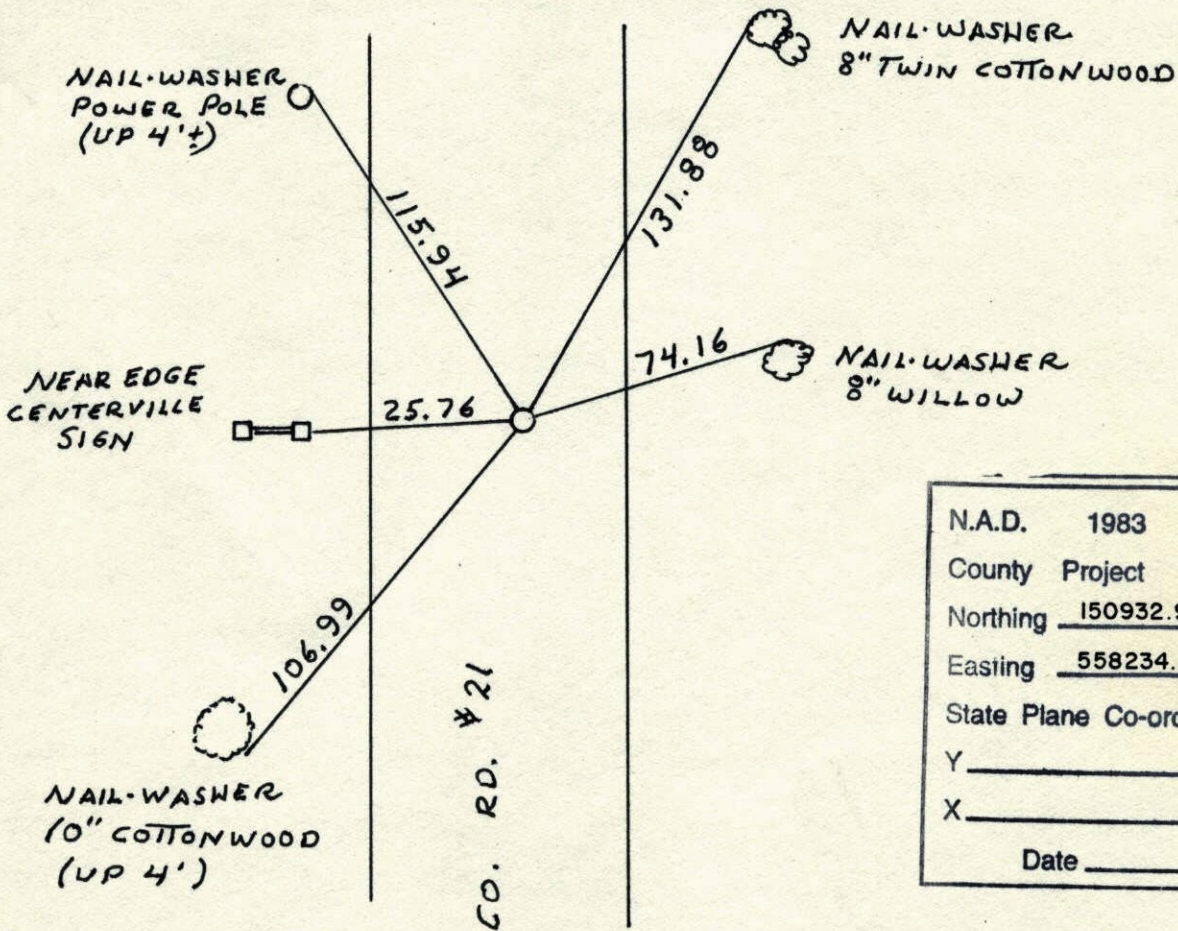
State of Minnesota

EAST QUARTER Corner of Sec. 14 Township 31 Range 22

I hereby certify that on the 30 day of JULY, 19 64, I found the described corner which was evidenced by 1/2" IRON PIPE SET BY C. O. GEORGE

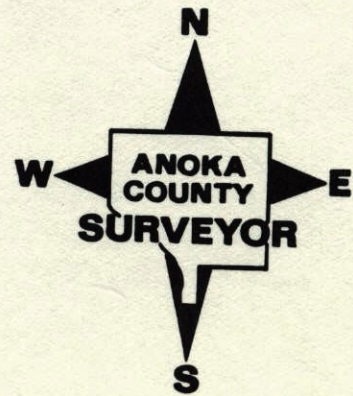
and I further certify that to perpetuate the location of said corner, I did, at the exact location thereof, place a permanent marker consisting of CAST IRON MONUMENT
C. I. 2'± EAST OF CENTERLINE

which reference or witness monuments are located in the manner following:



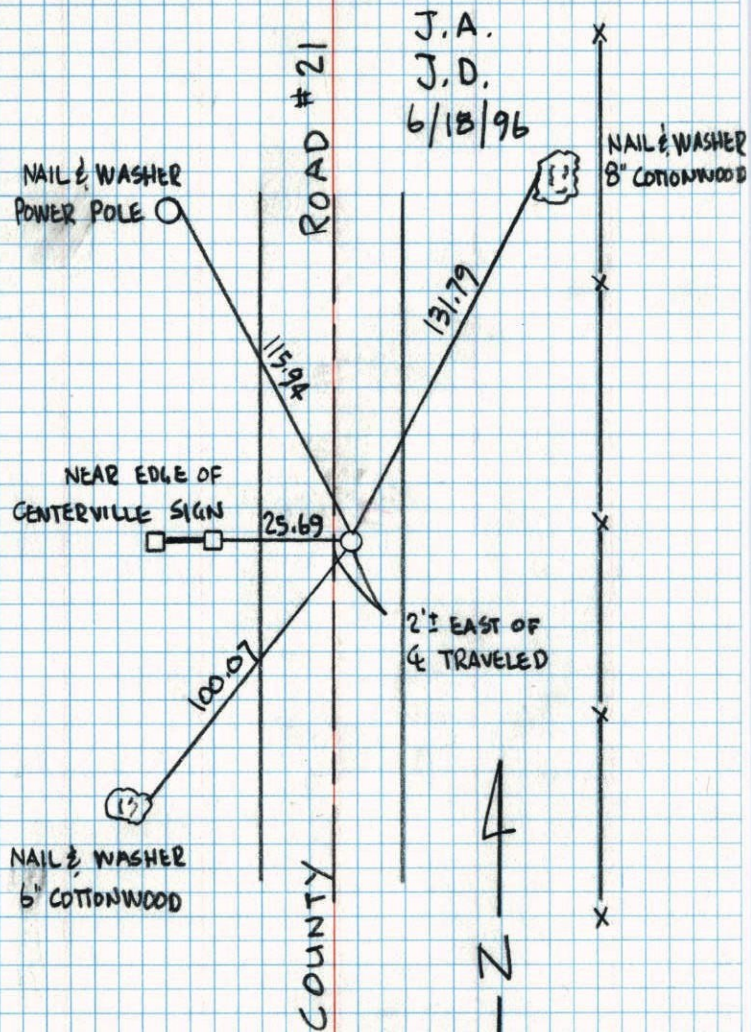
N.A.D.	1983	Co-ordinates
County	Project	Co-ordinates
Northing	<u>150932.9960</u>	<u>#10</u>
Easting	<u>558234.1705</u>	
State Plane Co-ordinates		
Y	_____	
X	_____	
Date	_____	

Revised date	Revised date	Revised date
<u>10-31-86</u>		
<u>8-30-91</u>		
<u>6-18-96</u>		
<u>7-20-98</u>		



EAST QTR. SEC 14 T 31 R 22

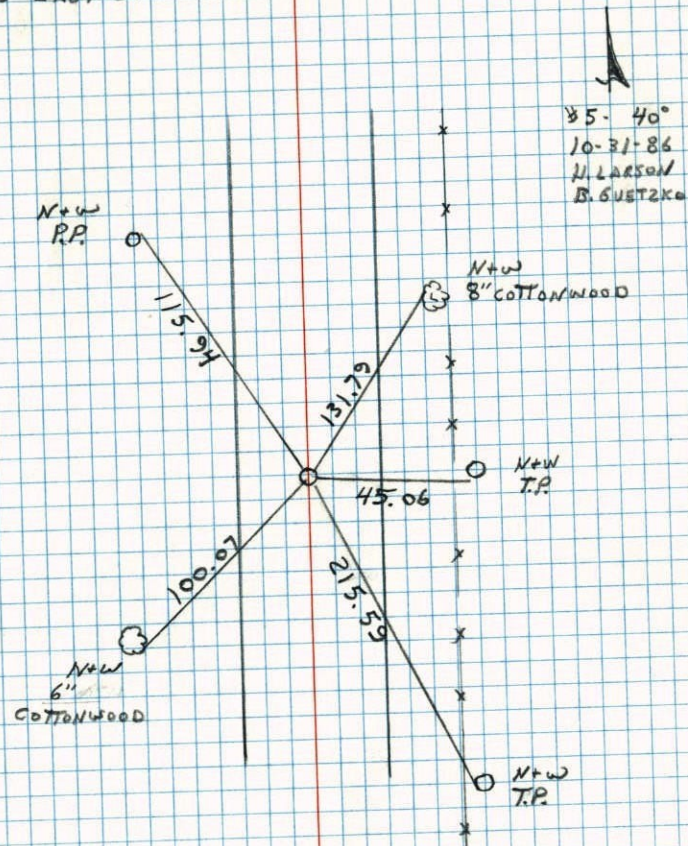
CHECKED & RETIED CAST IRON MONUMENT

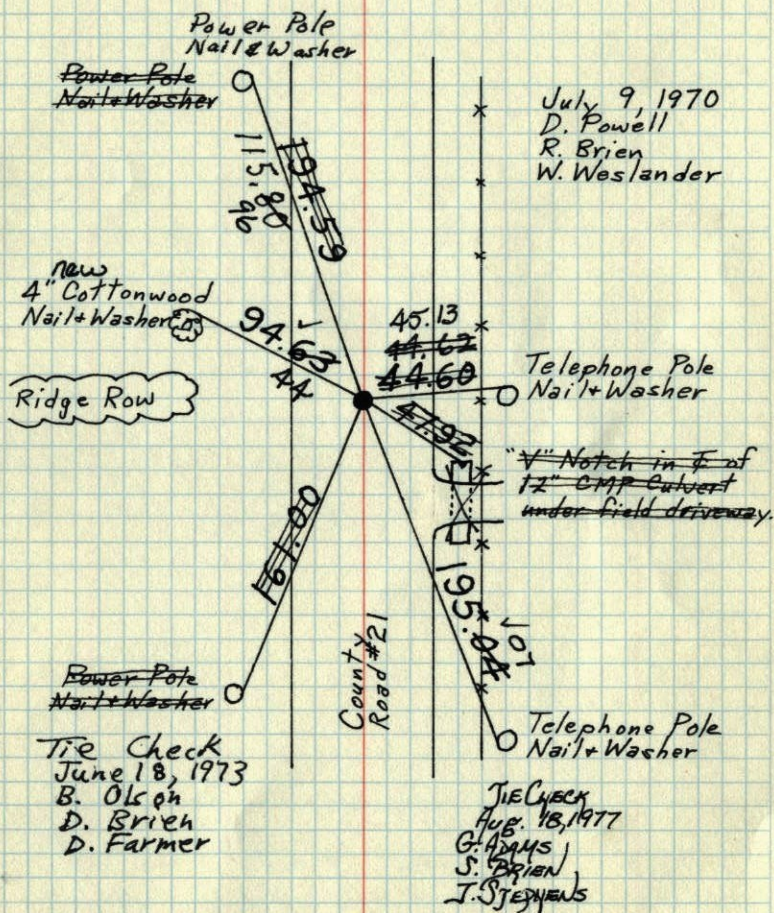


EAST 1/4 CORNER SECTION 14 T31 R22

RETIED CAST IRON MONUMENT. C.I. MARK.

3' EAST OF CENTERLINE.



E $\frac{1}{4}$ Cor. Sec. 14 - T31-R22Cast Iron Monument removed by construction.

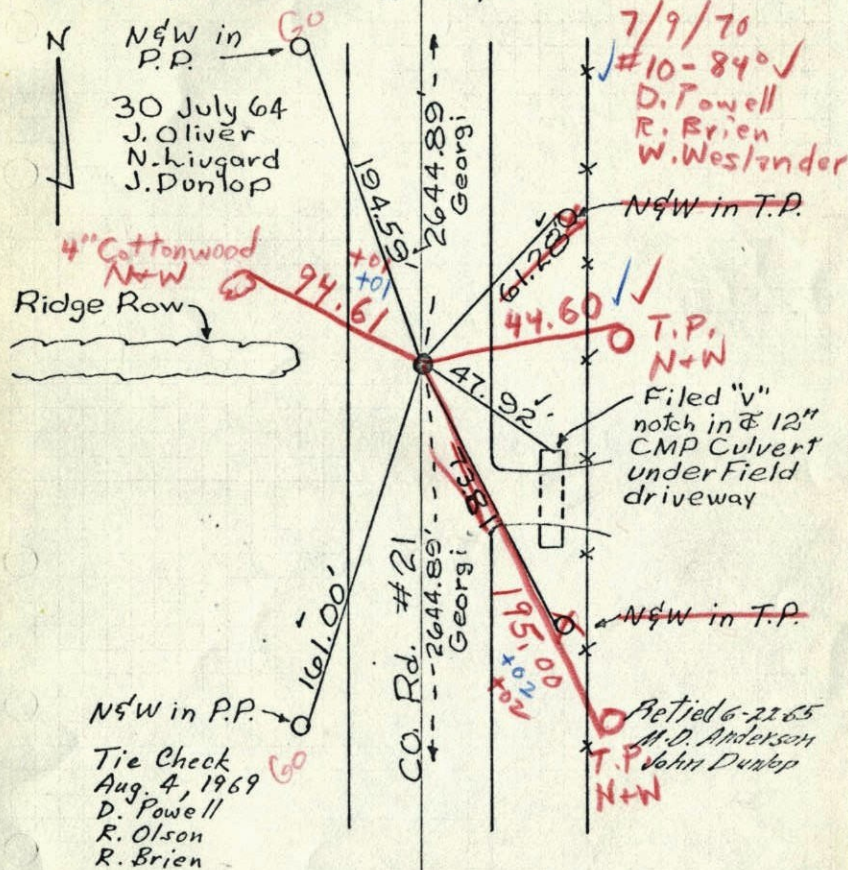
TEMPERATURE CORRECTED
 AND HORIZONTALLY
 TAPED MEASUREMENTS

ROLAND W. ANDERSON
 COUNTY SURVEYOR
 ANOKA COUNTY, MINNESOTA

X $\frac{1}{4}$ Cor. Sec. 14, T31, R22 1970⁶⁵

Found $\frac{1}{2}$ " I.P. Set by C.O. Georgi - $\frac{1}{2}$ way and on line between Sec. corners. Replaced I.P. with Cast Iron Monument. ~~Set PK Spks 2' N of E.~~

C.I. Mon 0.5' E. of E Stripe. ~~Removed C.I.~~



TEMPERATURE CORRECTED
 AND HORIZONTALLY
 TAPED MEASUREMENTS

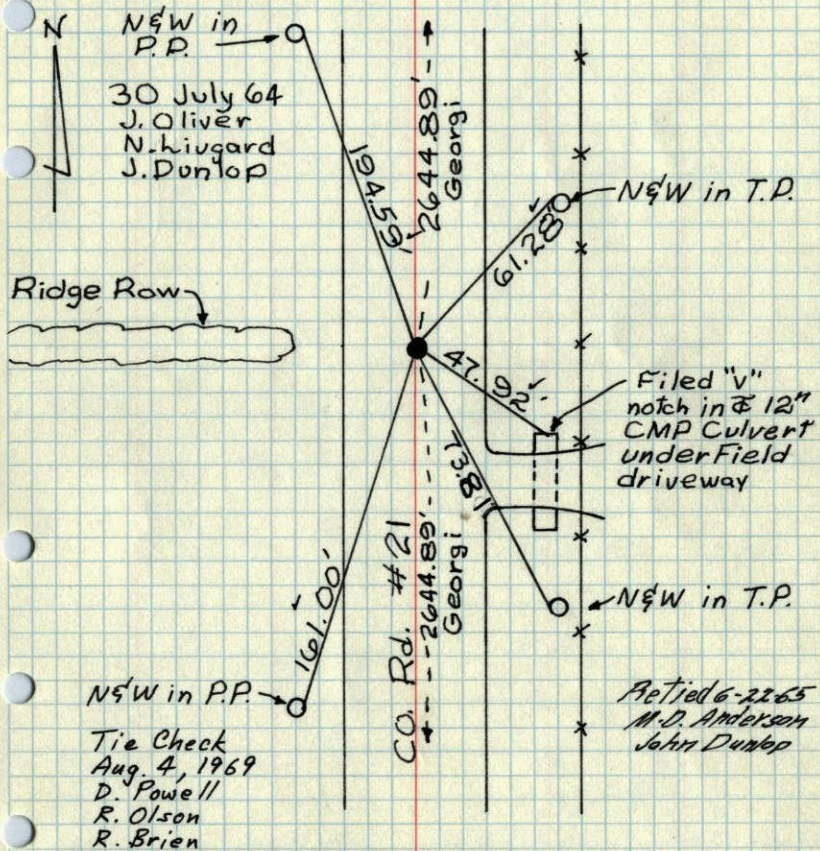
ROLAND W. ANDERSON
 COUNTY SURVEYOR
 ANOKA COUNTY, MINNESOTA

1969 65

1/4 Cor. Sec. 14, T31, R22

Found 1/2" I.P. Set by C.O. Georgi - 1/2 way and on line between Sec. corners. Replaced I.P. with Cast Iron Monument. ~~Set PK Spks 2' No. 4.~~

C.I. Mon 0.5 ± E. of Φ Stripe.



TEMPERATURE CORRECTED
AND HORIZONTALLY
TAPED MEASUREMENTS

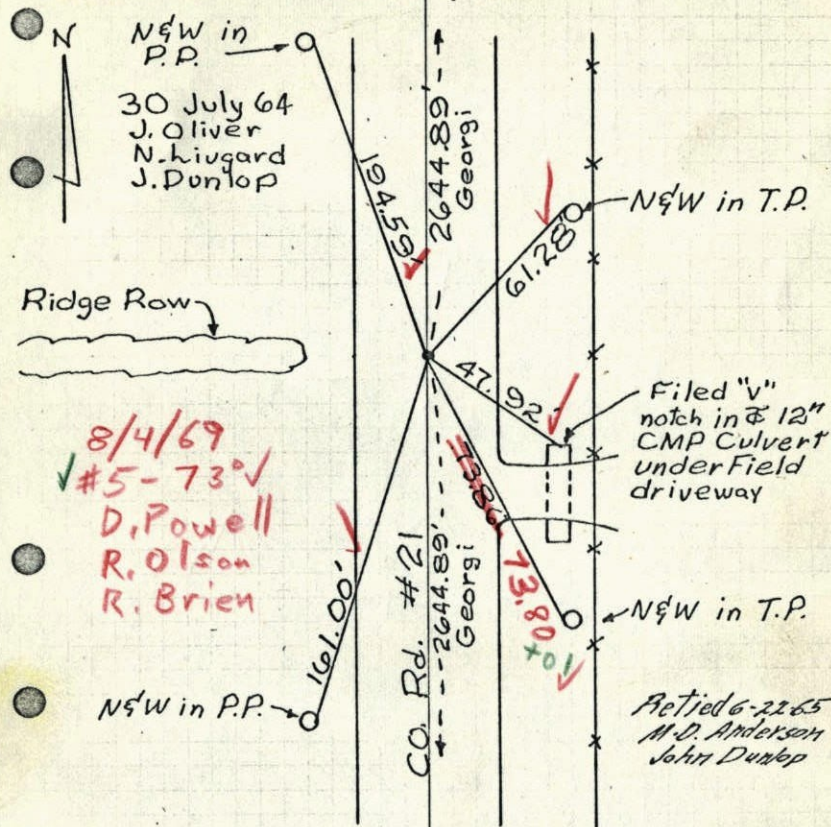
ROLAND W. ANDERSON
COUNTY SURVEYOR
ANOKA COUNTY, MINNESOTA

1969 65

1/4 Cor. Sec. 14, T31, R22

Found 1/2" I.P. Set by C.O. Georgi - 1/2 way and on line between Sec. corners. Replaced I.P. with Cast Iron Monument. ~~Set PK Spks 2' No. 4.~~

C.I. Mon 0.5 ± E. of Φ Stripe.



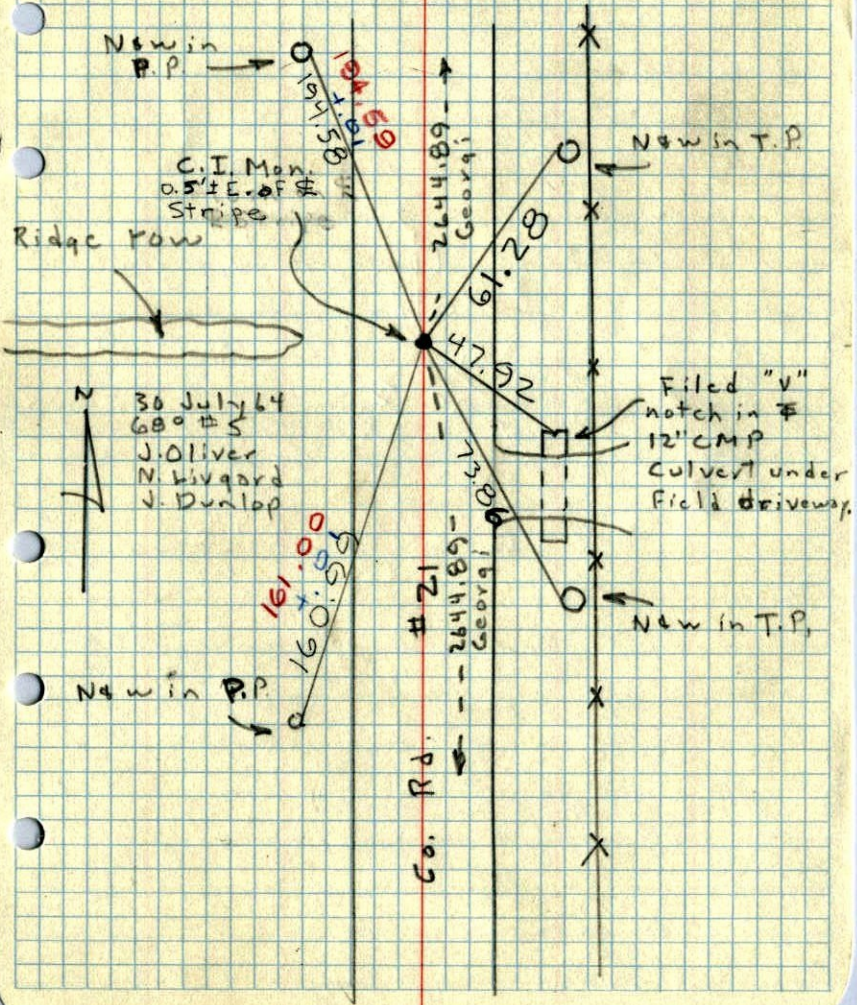
TEMPERATURE CORRECTED
AND HORIZONTALLY
TAPED MEASUREMENTS

ROLAND W. ANDERSON
COUNTY SURVEYOR
ANOKA COUNTY, MINNESOTA

1964

E 1/4 Cor. Sec. 14, T31, R22

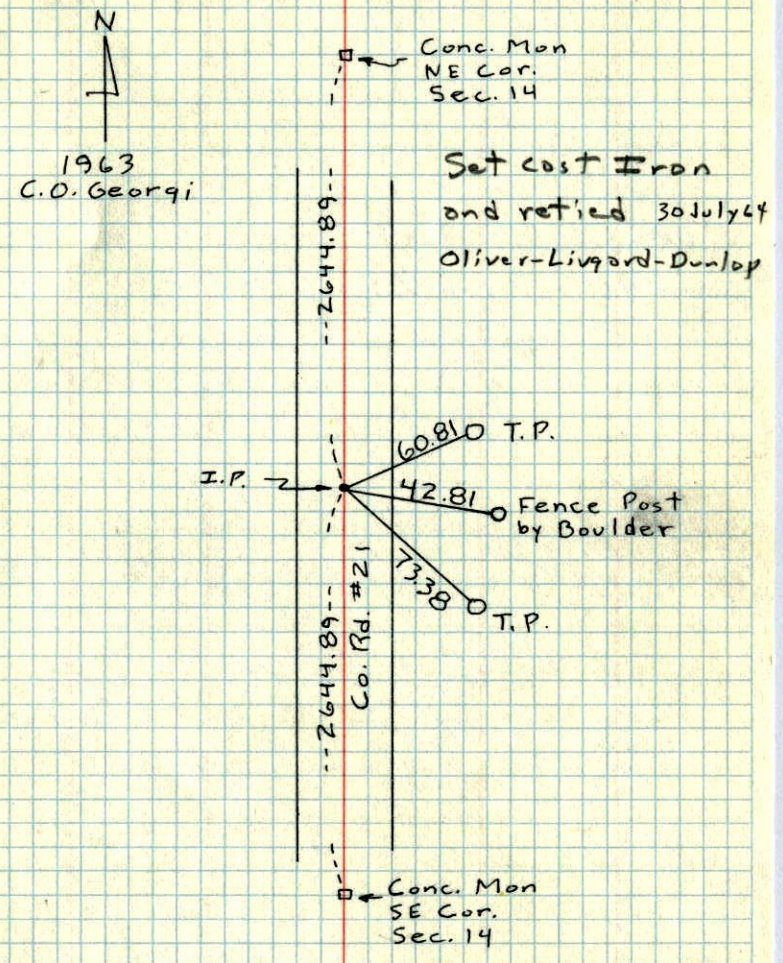
Found 1/2" I.P. Set by C.O. Georgi - 1/2 way and on line between Sec. Corners. Replaced I.P. with Cast Iron Monument. Set PIC Spks 2' No. & E.



18A
1963

E 1/4 Cor. Sec. 14, T31, R22

I.P.



E 1/4 Cor. Sec. 14, 31, 22

C. D. Georgi 1963 1963

N
↑

