

# CERTIFICATE OF LOCATION OF GOVERNMENT CORNER

County of Anoka

State of Minnesota

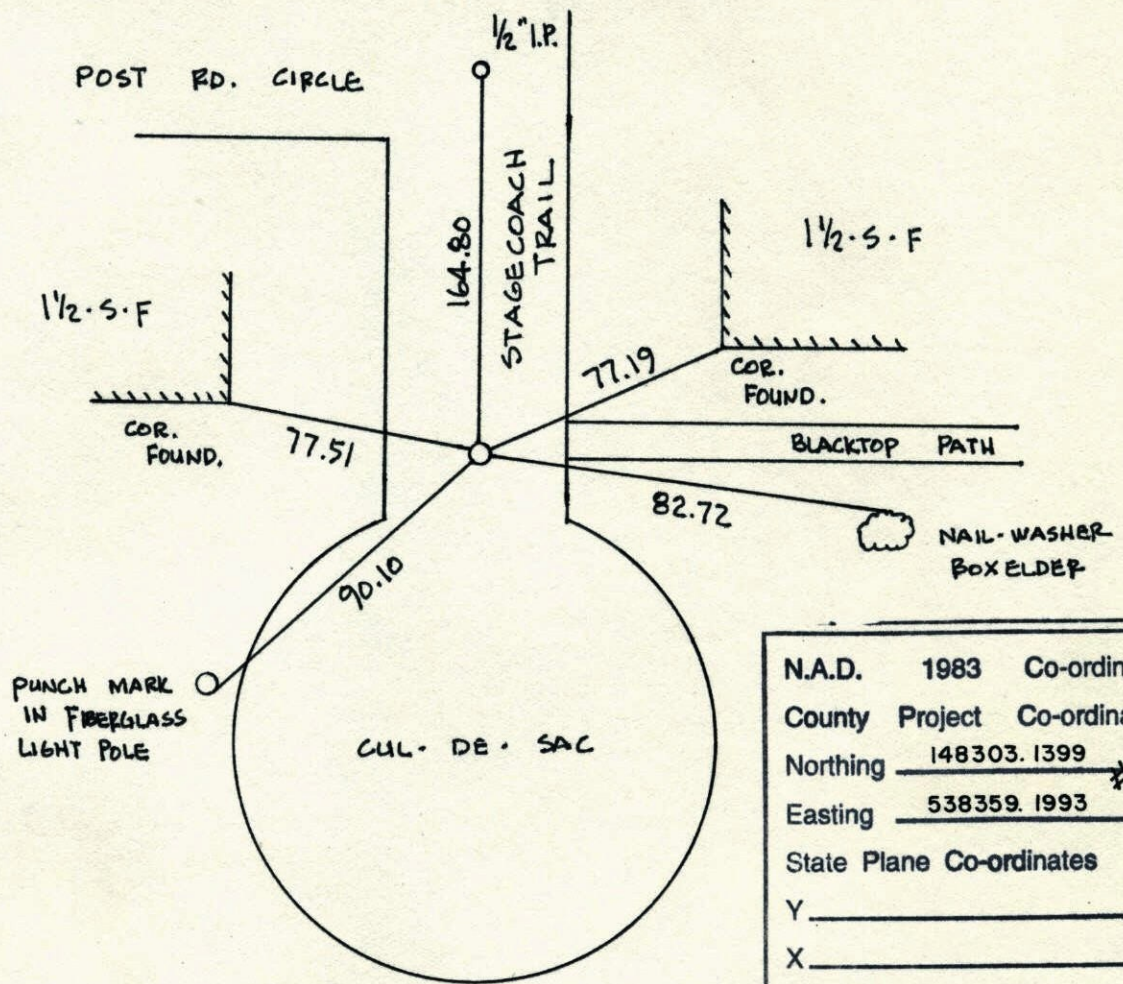
WITNESS Corner of Sec. 20 Township 31 Range 22

N. LINE OF NW 1/4

I hereby certify that on the 14 day of MAY, 1963, I found the described corner which was evidenced by CONCRETE MONUMENT

and I further certify that to perpetuate the location of said corner, I did, at the exact location thereof, place a permanent marker consisting of CAST IRON MONUMENT

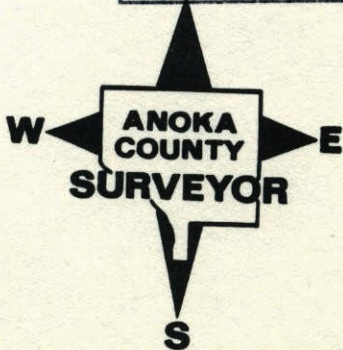
which reference or witness monuments are located in the manner following:



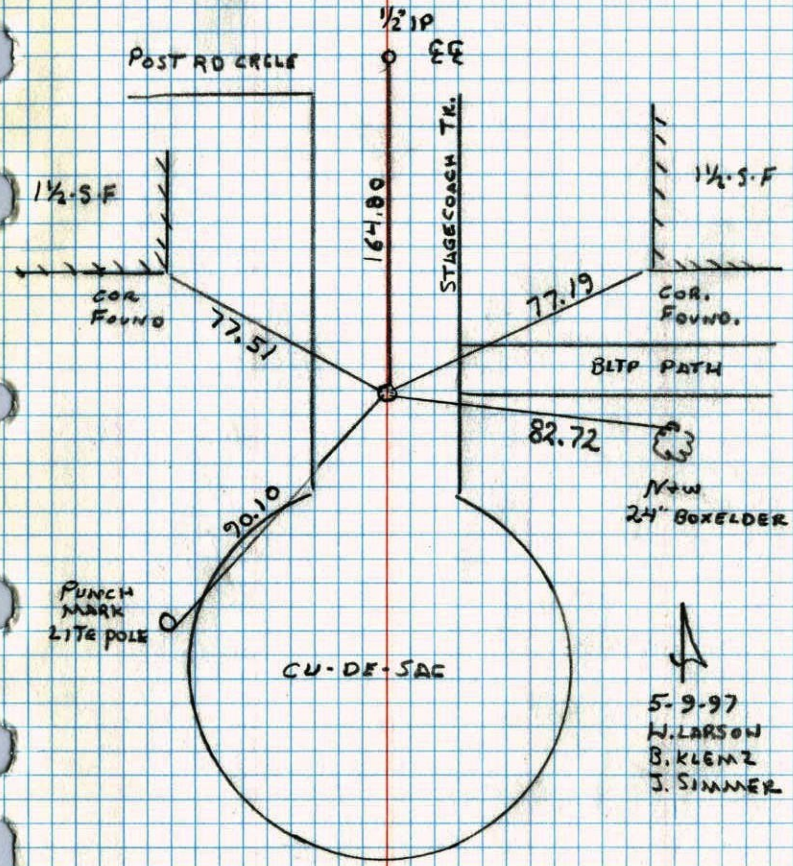
N.A.D.	1983	Co-ordinates
County	Project	Co-ordinates
Northing		<u>148303.1399</u> * 12 <sup>6</sup>
Easting		<u>538359.1993</u>
State Plane Co-ordinates		
Y		_____
X		_____
<b>N</b> Date _____		

Revised date	Revised date	Revised date
10-15-92		
5-1-96		
5-9-97		
1-28-98		

Reset

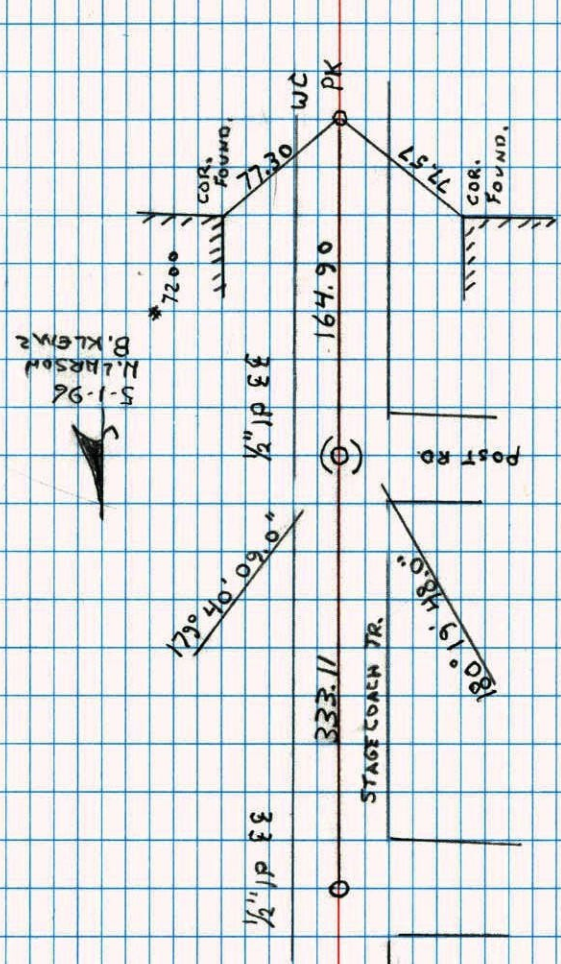


WC ON N. LINE OF NW 1/4 SEC. 20 T31 R22  
SET CAST IRON MONUMENT AFTER  
CONSTRUCTION MOVED WC LOCATION  
TO STREET.



WELBYNE NO. 448

NW  
WC ON N. LINE OF NW 1/4 SEC. 20 T31 R22  
SET PK IN NEW LOCATION ORIGINAL  
DESTROYED BY PARK TRAIL.

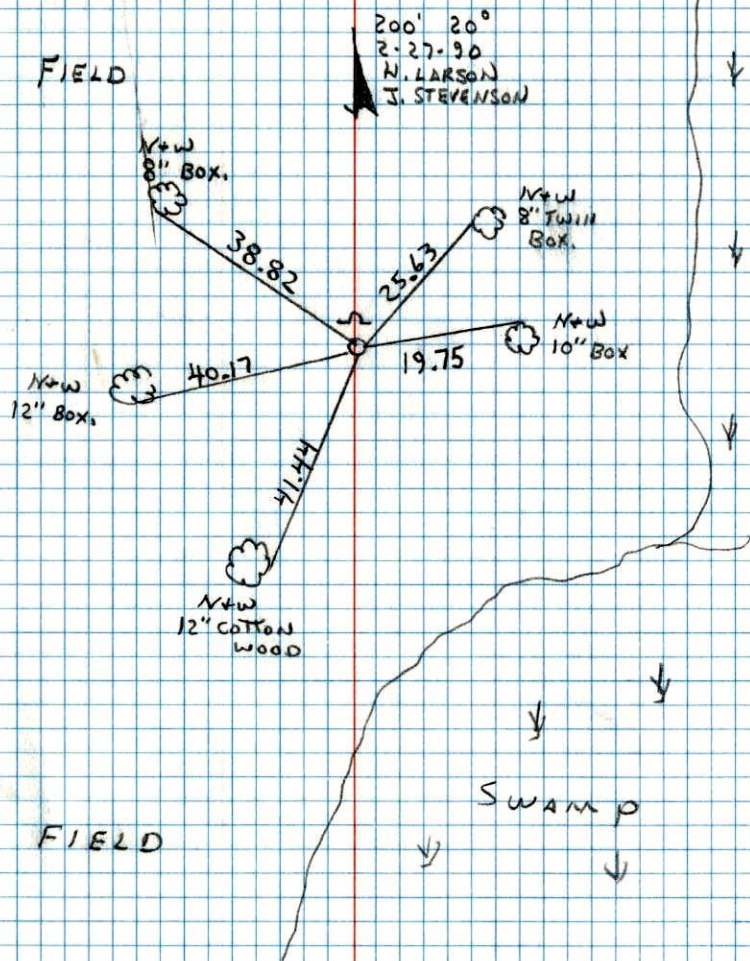


NATIONAL PRINTING NO. 448

N NW 20

W.C. ON S. LINE OF SW 1/4 SEC. 20, T31 R22

SET 1/2" IRON PIPE AS NEW W.C. OLD  
COR. IN SWAMP SET NEW ONE ON HIGH  
GROUND SIGN AND POST ON NORTH SIDE



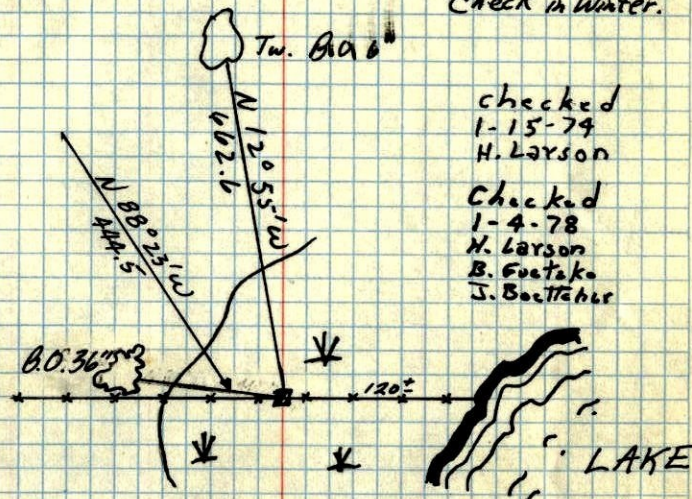
M.C. N. LINE SEC. 20, T31, R22

CONC. MON.

On West Side of Lake.

Sign post  
on N. side

Check in Winter.

checked  
1-15-79  
H. Larsonchecked  
1-4-78  
H. Larson  
B. Foetako  
J. Boettcher

14 May 63 J. Oliver & M. D. Anderson  
Found Conc. Mon 0.1' under water - #1  
I.P. Sticking up 1' on NE Cor. of Corner.  
1" wood dowel Sticking up 4' on East  
Side of Corner Both Tie Trees in  
Place - Could take only 4 more Tie  
almost Due West. Fence line broken  
down by Corner.

Under water - 6/14/65  
M.D.A.

Wet - 8/14/69

R.A.O.

wet - 1977 R.F.S.

DEC. 30, 1944  
CARTWRIGHT