

CERTIFICATE OF LOCATION OF GOVERNMENT CORNER

County of Anoka

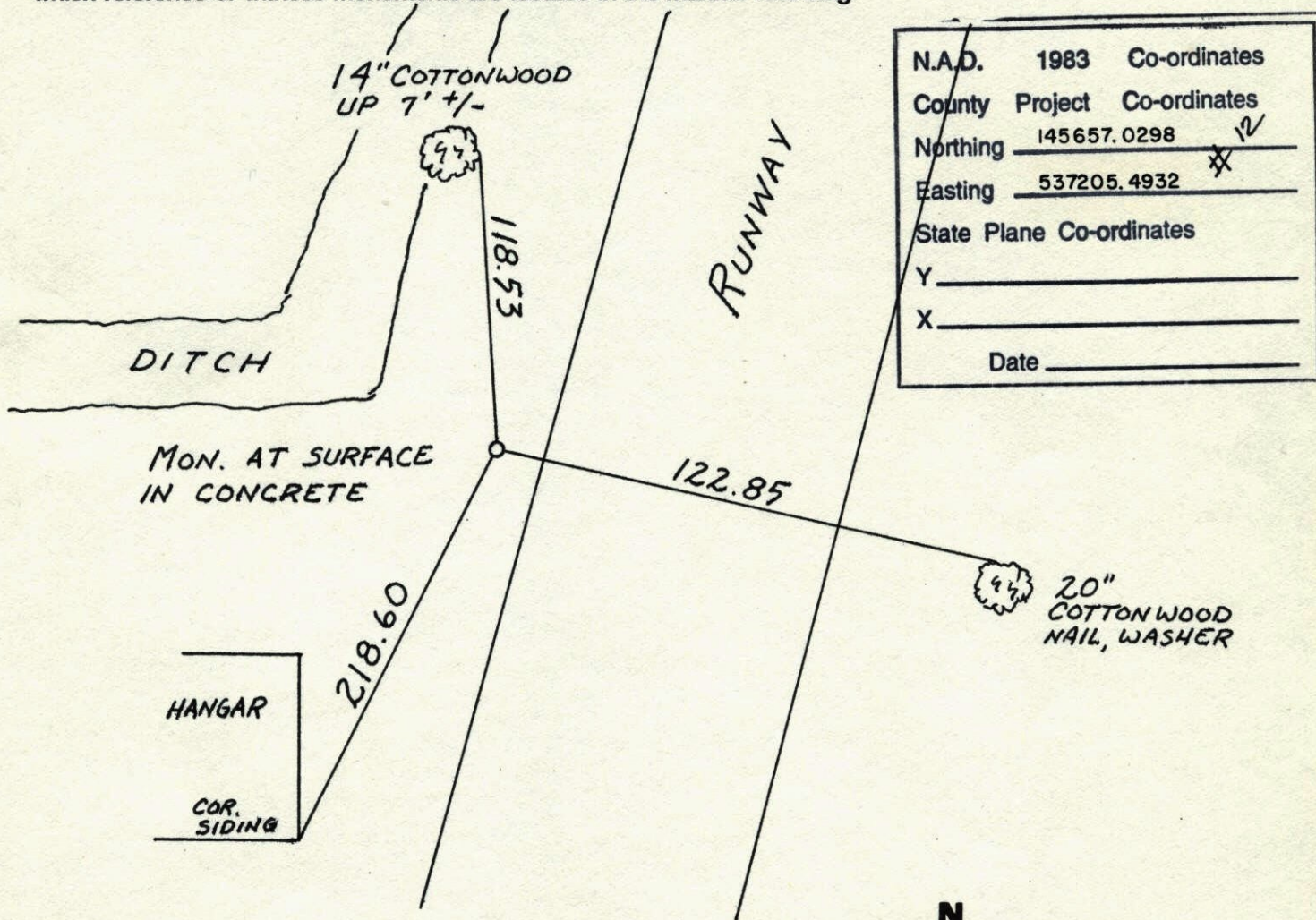
State of Minnesota

EAST QTR. Corner of Sec. 19 Township 31 Range 22

I hereby certify that on the 13 day of MAY, 1963, I found the described corner which was evidenced by 4" SQUARE CONCRETE

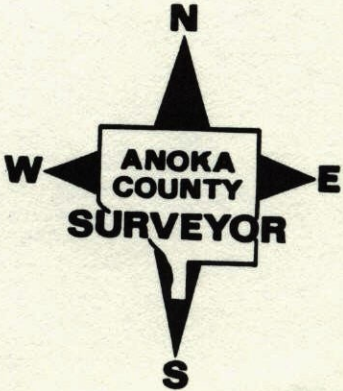
and I further certify that to perpetuate the location of said corner, I did, at the exact location thereof, place a permanent marker consisting of CAST IRON MON. FLUSH WITH GROUND SET IN CONCRETE

which reference or witness monuments are located in the manner following:

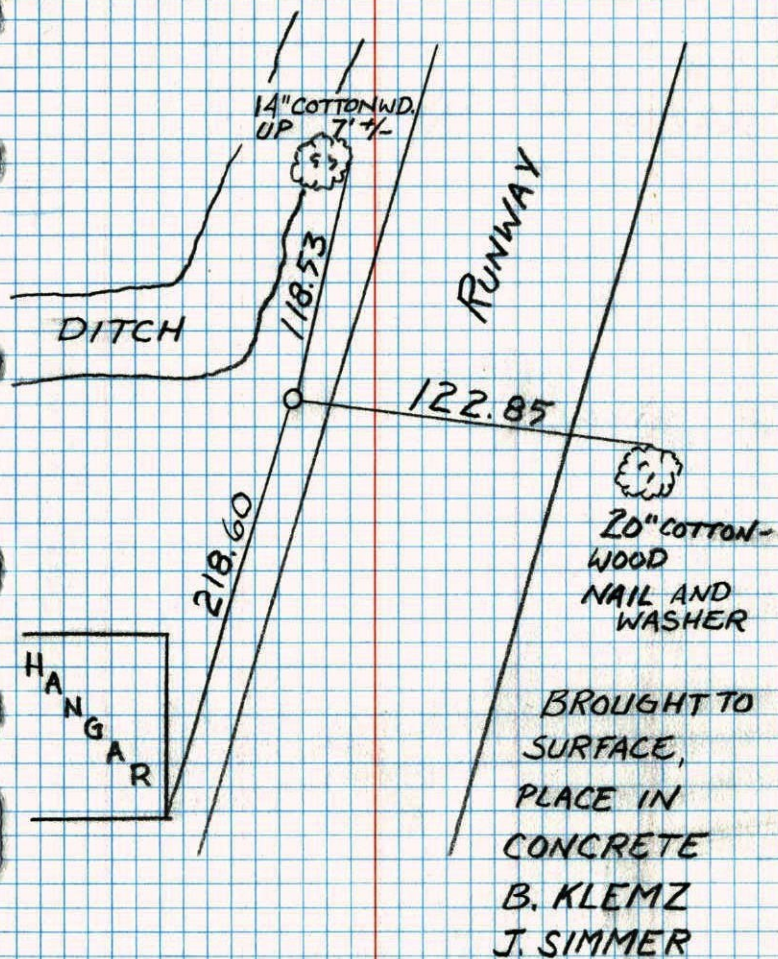


| | | |
|--------------------------|-------------|--------------|
| N.A.D. | 1983 | Co-ordinates |
| County | Project | Co-ordinates |
| Northing | 145657.0298 | 12 |
| Easting | 537205.4932 | X |
| State Plane Co-ordinates | | |
| Y | _____ | |
| X | _____ | |
| Date | _____ | |

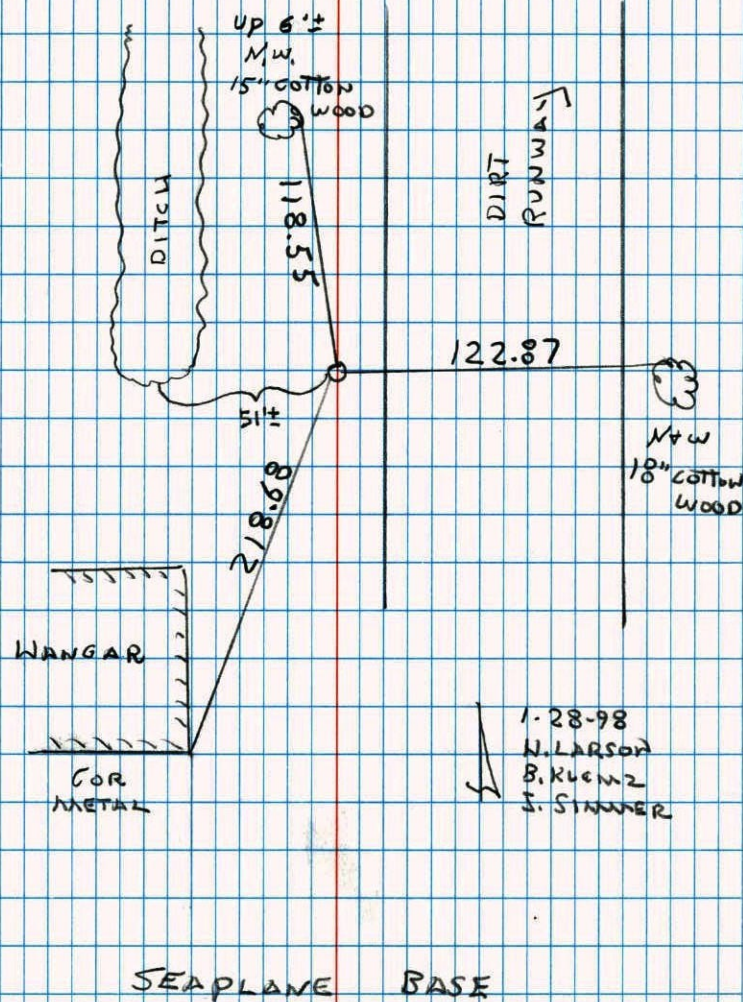
| Revised date | Revised date | Revised date |
|--------------|--------------|--------------|
| 10-21-91 | | |
| 2-2-95 | | |
| 4-24-98 | | |
| | | |
| | | |
| | | |



EAST QTR. S. 19 T 31 R 22
 CAST IRON MON. IN CONCRETE



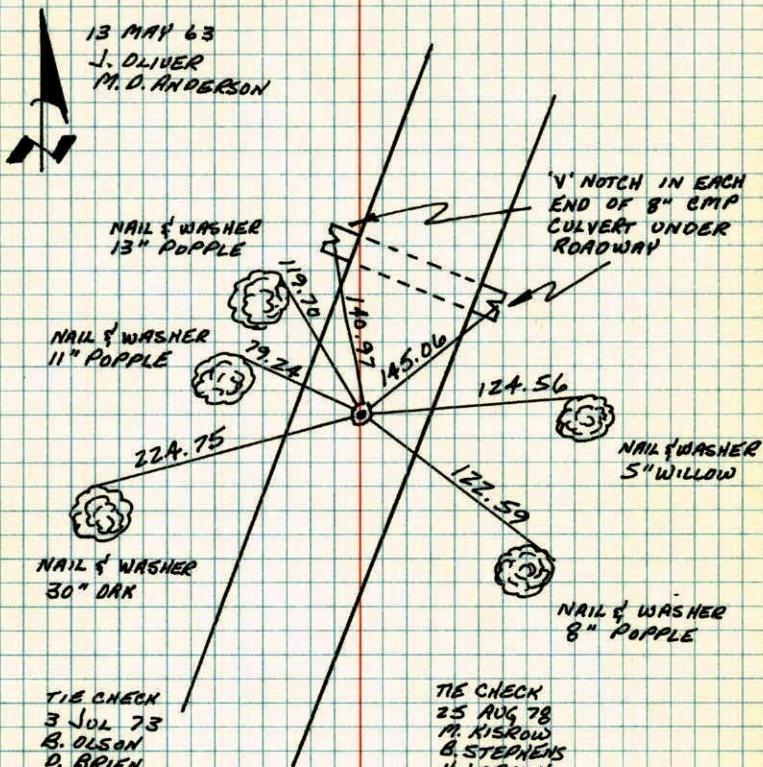
1/4 COR SECTION 19 T 31 R 22
 RETIED CAST IRON MONUMENT
 5' DOWN 1' ±



E 1/4 CORNER SECTION 19-T31-R22

FOUND 4" SQUARE CONCRETE MONUMENT DOWN 20" —
SET CAST IRON MONUMENT DOWN 0.2'± ON TOP
OF 4" CONCRETE MONUMENT.

13 MAY 63
J. OLIVER
M. D. ANDERSON



TIE CHECK
3 JUL 73
B. OLSON
D. BRIEN
D. FARMER

TIE CHECK
28 MAY 77
R. SANNEBOD
& ROAMS
& BRIEN

TIE CHECK
25 AUG 78
M. KISROW
B. STEPHENS
N. LARSON
B. GOETZKO
D. NAGLAK

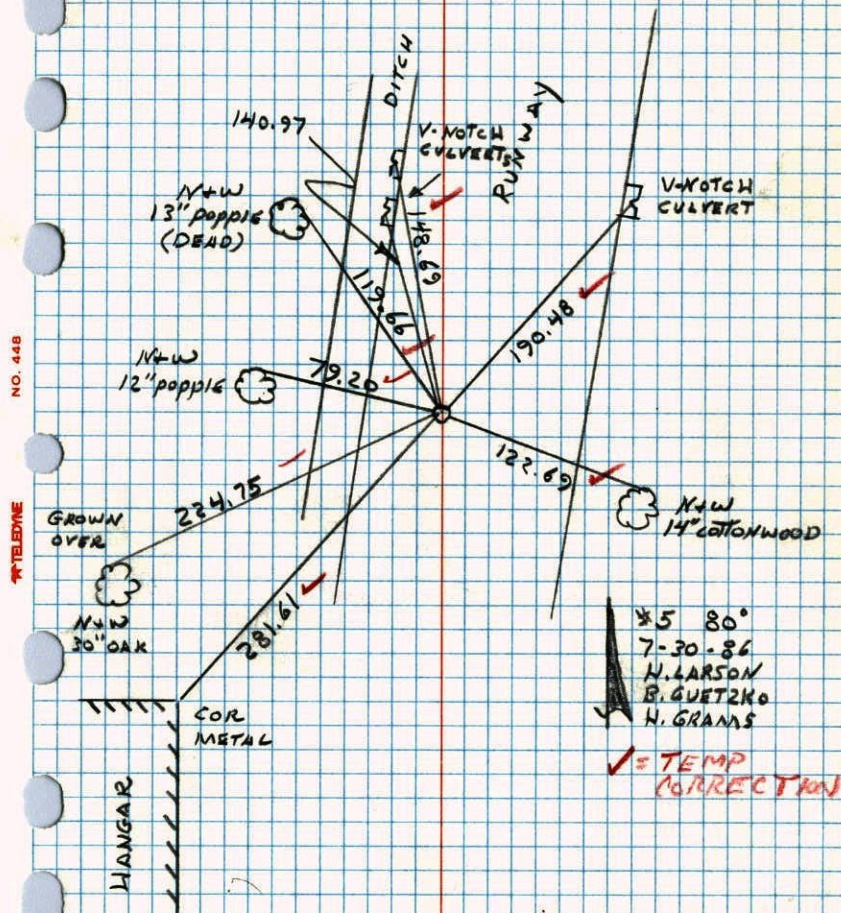
TIE CHECK
8-7-80
B. STEPHENS
P. ROSS
P. HORNBY

TEMPERATURE CORRECTED
AND HORIZONTALLY
TAPED MEASUREMENTS

ROLAND W. ANDERSON
COUNTY SURVEYOR
ANOKA COUNTY, MINNESOTA

EAST 1/4 CORNER SECTION 19 T31 R22

RETIED CAST IRON MONUMENT AFTER
RUNWAY CONSTRUCTION. C.I. DOWN .2'±



NO. 448

* TELEPHONE

E 1/4 Cor. Sec. 19, T 31, R 22

Set Cast Iron Monument Down 0.2' on top of 4" Con. Mon.

Retie

8-25-78

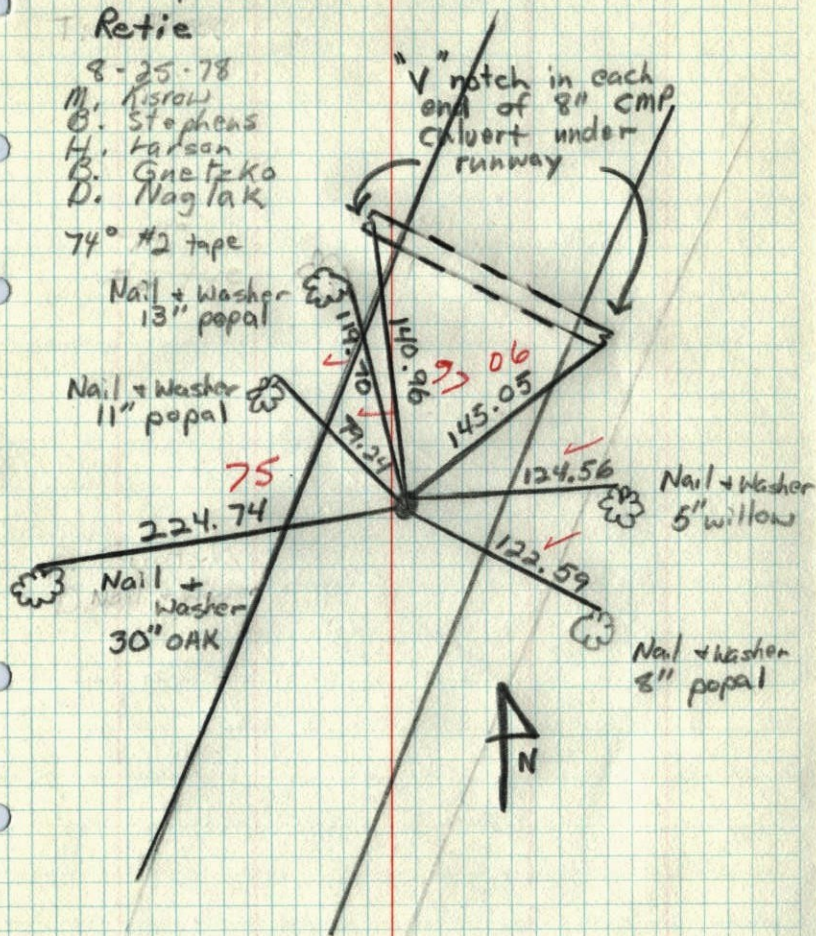
M. Kisrow
B. Stephens
H. Larson
B. Gnetzko
D. Naglak

74° #2 tape

Nail + Washer
13" popal

Nail + Washer
11" popal

Nail + Washer
30" OAK



84

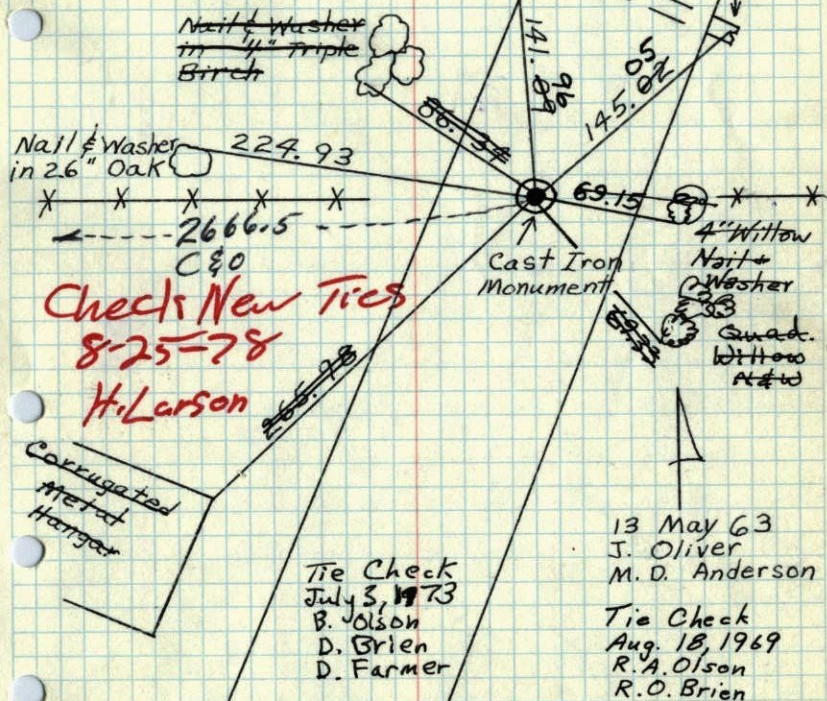
E 1/4 Cor. Sec. 19, T 31, R 22

Found 4" Sq. Conc. Mon. down 20" - Set

Cast Iron Monument flush with dirt Runway.

TIE CHECK
May 24, 1977
R. JANNERUD
B. ADAMS
S. Brien

Filed "v" notch in each end of 8" CMP Culvert under Runway (bent)



Checks New Ties
8-25-78
H. Larson

TEMPERATURE CORRECTED
AND HORIZONTALLY
TAPED MEASUREMENTS

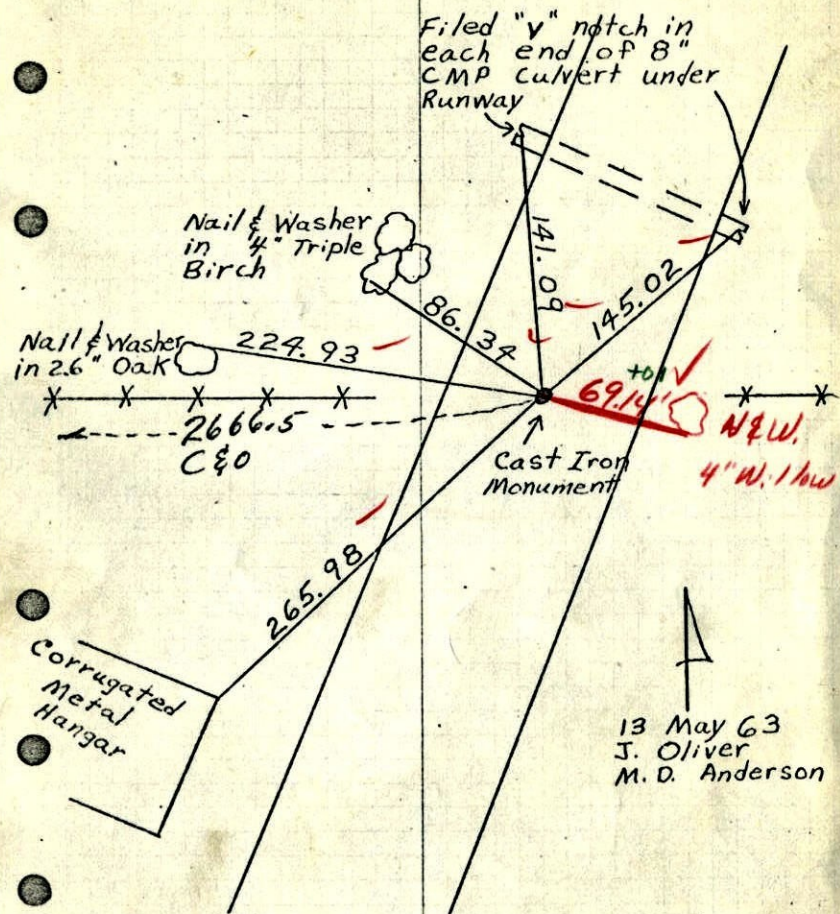
ROLAND W. ANDERSON
COUNTY SURVEYOR
ANOKA COUNTY, MINNESOTA

1969 84

E 1/4 Cor. Sec. 19, T31, R22

Found 4" Sq. Conc. Mon. down 20" - Set

Cast Iron Monument flush with dirt Runway.



TEMPERATURE CORRECTED AND HORIZONTALLY TAPED MEASUREMENTS

ROLAND W. ANDERSON
COUNTY SURVEYOR
ANOKA COUNTY, MINNESOTA

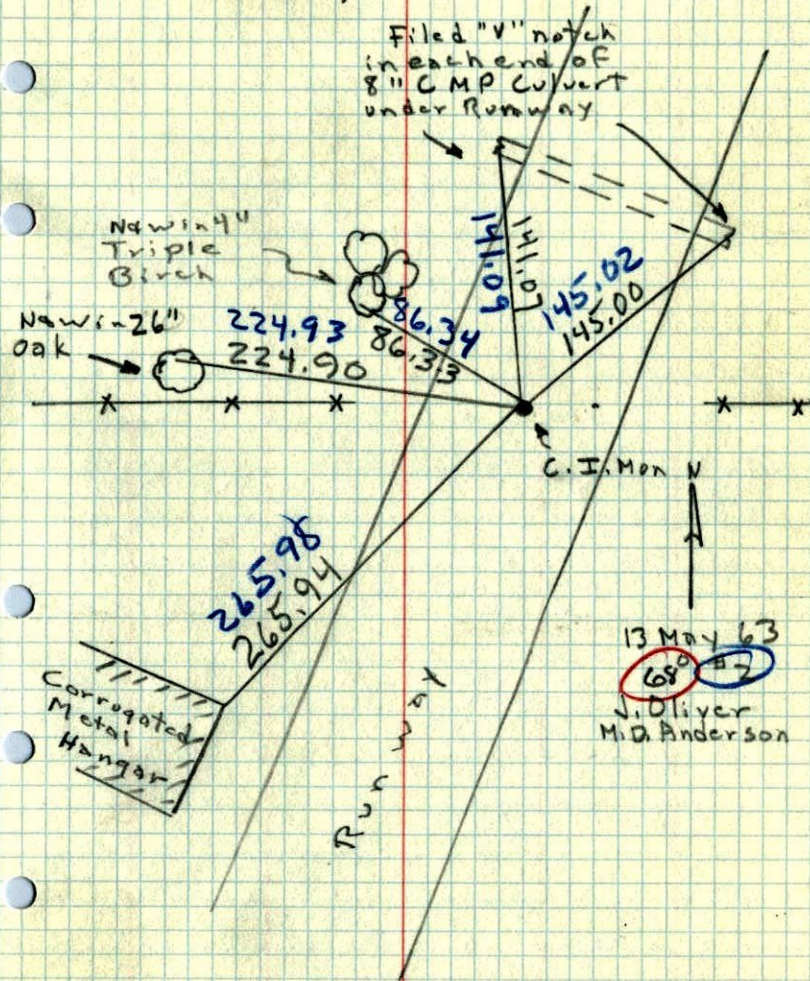
8-18-69

1963

E 1/4 Cor. Sec. 19, T31, R22

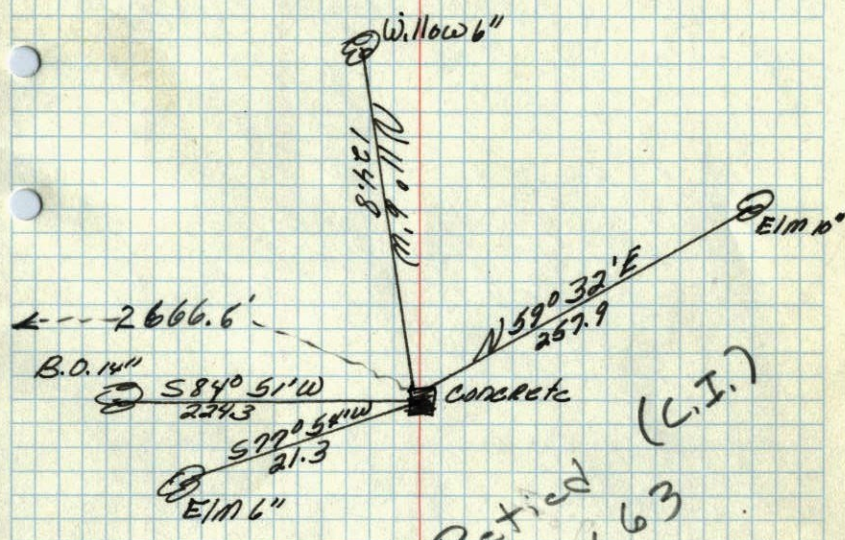
Found 4" Sq. Conc. Mon. down 20" - Set

Cast Iron Monument Flush with dirt Runway.



E
1/4 corner of Sec. 19 T. 31 ~~R22~~ ^{R22} 30
~~1944~~ 1944

Concrete Monument Flush
on E & W Fence
2666.6' W to Center



Concrete (L.I.)
Retied
14 May 63

E 7 31, R 22 S
Bowl

Dec. 29, 1944
Camerwright