

CERTIFICATE OF LOCATION OF GOVERNMENT CORNER

County of Anoka

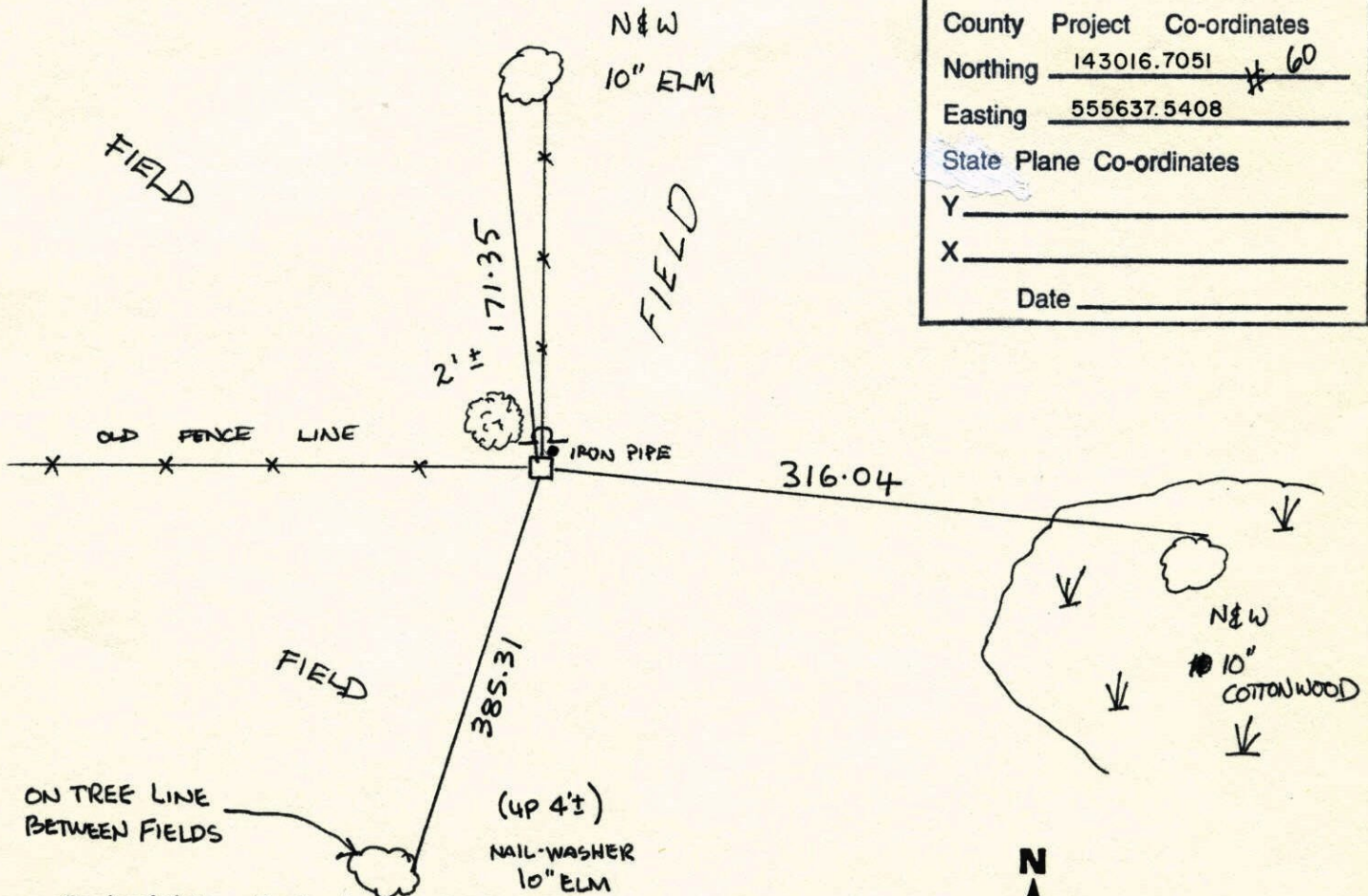
State of Minnesota

SOUTH QUARTER Corner of Sec. 23 Township 31 Range 21

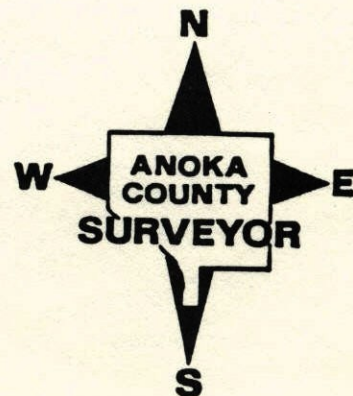
I hereby certify that on the 16 day of MAY, 1963, I found the described corner which was evidenced by CONCRETE

and I further certify that to perpetuate the location of said corner, I did, at the exact location thereof, place a permanent marker consisting of CONCRETE MONUMENT SIGN AND POST ON NORTH SIDE. WITH PIPE ON NTH/EAST SIDE which reference or witness monuments are located in the manner following:

N.A.D.	1983	Co-ordinates
County	Project	Co-ordinates
Northing	<u>143016.7051</u>	<u>* 60</u>
Easting	<u>555637.5408</u>	
State Plane Co-ordinates		
Y	_____	
X	_____	
Date	_____	

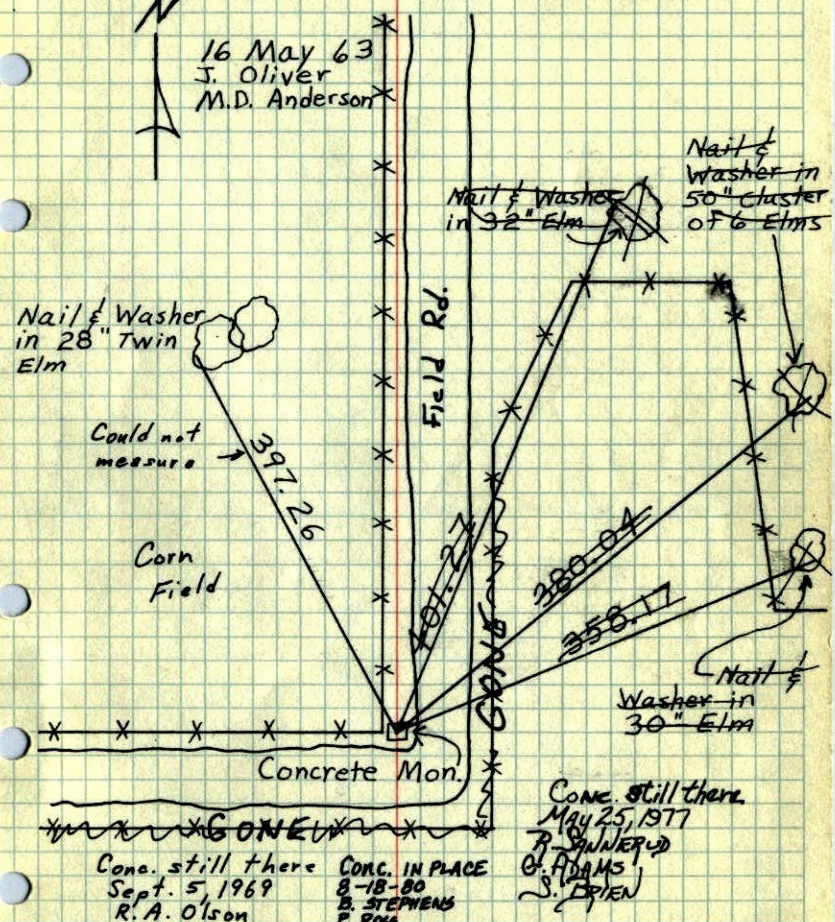


Revised date	Revised date	Revised date
<u>12-21-90</u>		
<u>10-29-91</u>		
<u>3-5-98</u>		



S 1/4 Cor. Sec. 23, T31, R 22

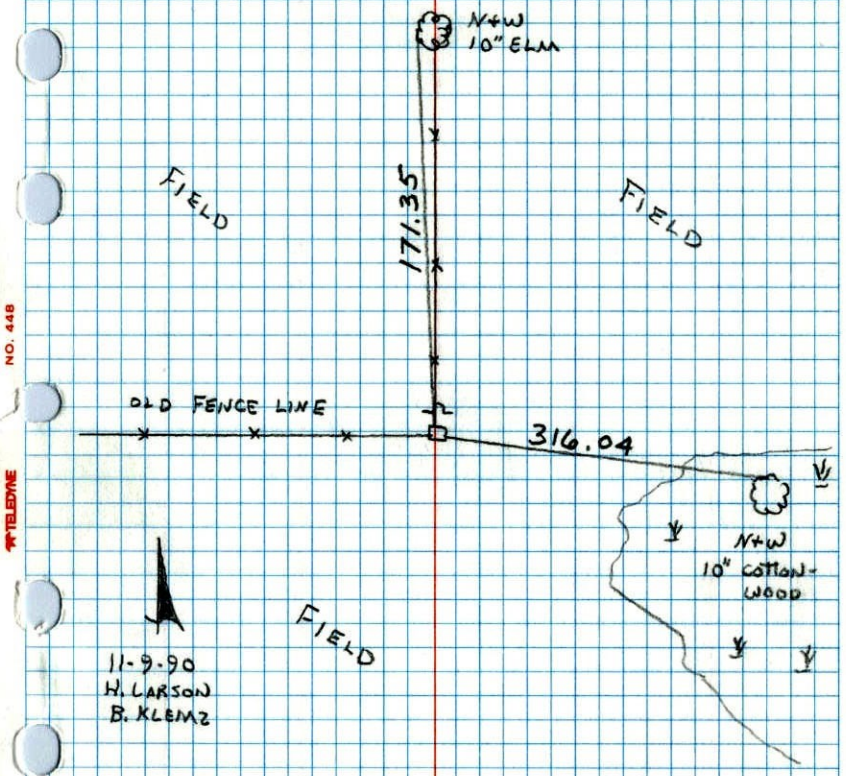
Found 4" Sq. Concrete Mon. sticking up 0.5' - Set 3/4" Iron pipe on North Side



TEMPERATURE CORRECTED ROLAND W. ANDERSON AND HORIZONTALLY TAPED MEASUREMENTS COUNTY SURVEYOR ANOKA COUNTY, MINNESOTA

SOUTH 1/4 CORNER SECTION 23 T31 R22

RETIED CONCRETE MONUMENT SIGN AND POST ON NORTH SIDE.



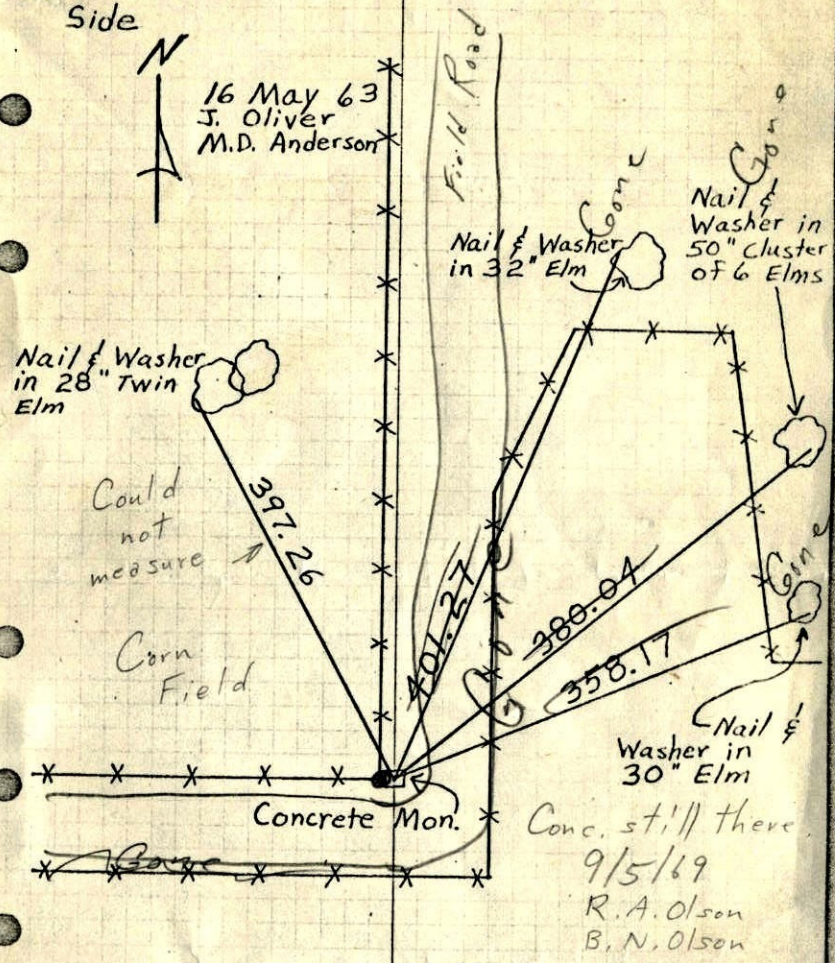
11-9-90 H. LARSON B. KLEMZ

NO. 448 TELEPHONE

~~1969~~ 95
 S 1/4 Cor. Sec. 23, T31, R 22

Found 4" Sq. Concrete Mon. sticking
 up 0.5' - Set 3/4" Iron pipe on North
 Side

N
 16 May 63
 J. Oliver
 M.D. Anderson

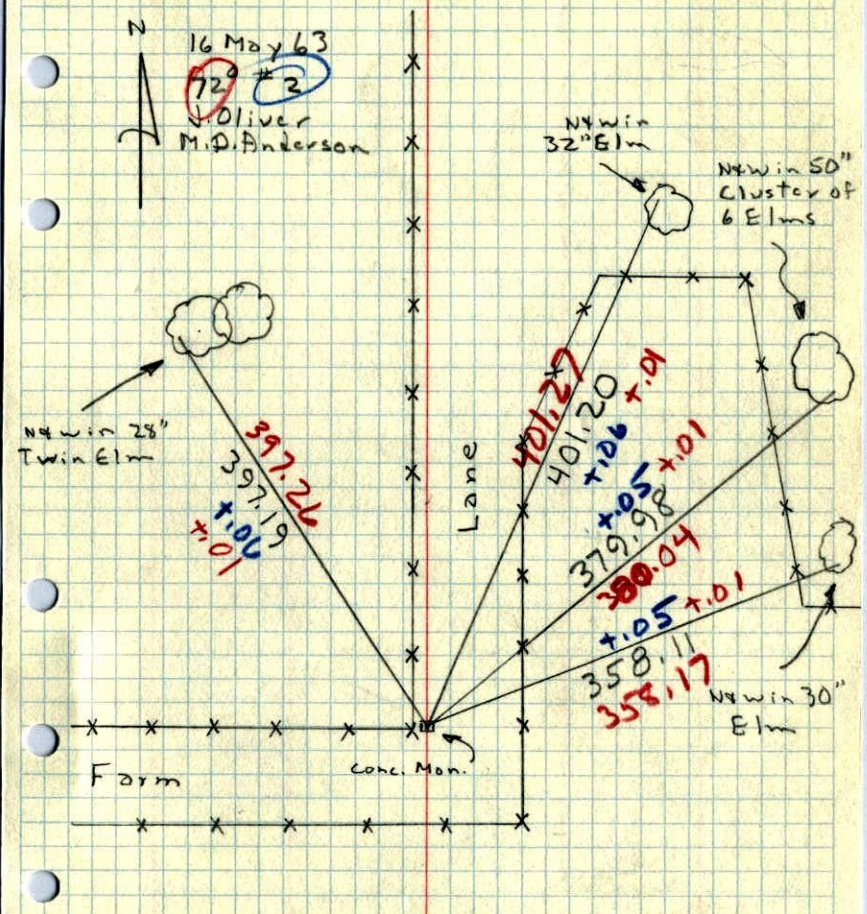


TEMPERATURE CORRECTED ROLAND W. ANDERSON
 AND HORIZONTALLY COUNTY SURVEYOR
 TAPED MEASUREMENTS ANOKA COUNTY, MINNESOTA

1963
 S 1/4 Cor. Sec. 23, T31, R 22

Found 4" Sq. Concr. Mon. Sticking
 up 0.5' - Set 3/4" I.P. on No. Side

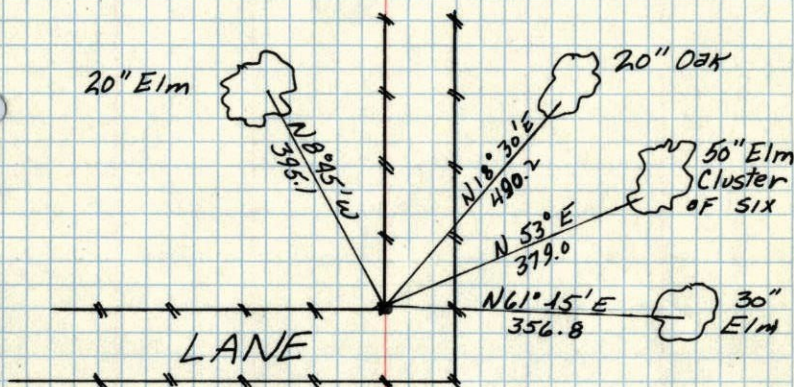
N
 16 May 63
 J. Oliver
 M.D. Anderson



TEMPERATURE CORRECTED ROLAND W. ANDERSON
 AND HORIZONTALLY COUNTY SURVEYOR
 TAPED MEASUREMENTS ANOKA COUNTY, MINNESOTA

1948⁵

S $\frac{1}{4}$ SEC. 23, T 31, R 22
CONCRETE MON. UP .5 FT.



April 20, 1948
CARTWRIGHT

S $\frac{1}{4}$ cor. sec. 23 + 21 R 22

Found Con. Mon. next to
Cor. Fence post of N. + W.
Lane fence.

