

CERTIFICATE OF LOCATION OF GOVERNMENT CORNER

County of Anoka

State of Minnesota

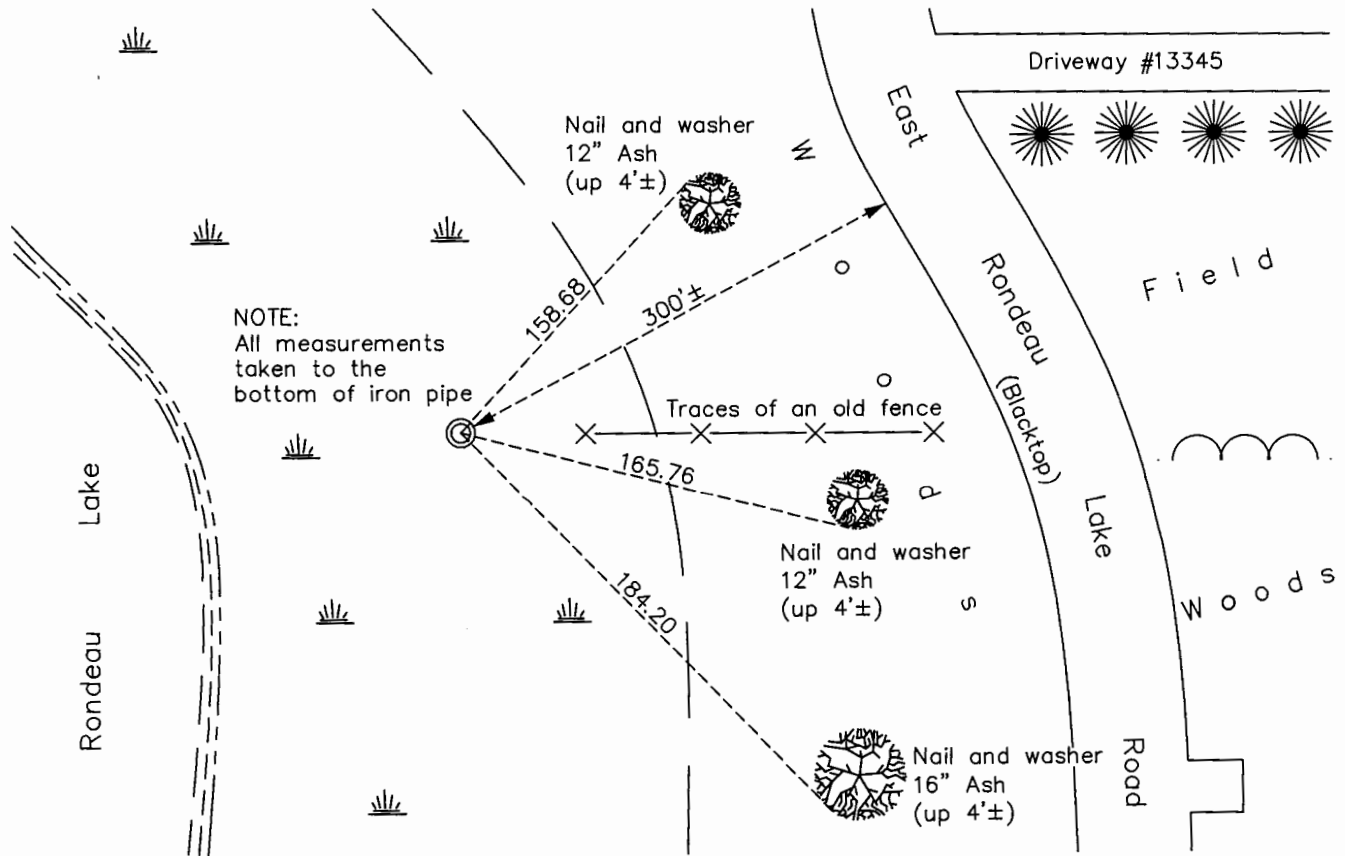
Northeast Corner of Sec. 3 Township 31 Range 22

On the 30th day of September, 1975, the described corner was evidenced by a 6" iron pipe

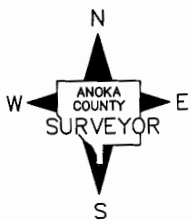
and to perpetuate the location of said corner, at the exact location thereof, a permanent marker was placed consisting of the same 6" iron pipe up 7'± leaning to the northeast

AND on the 12th day of January, 2017, said permanent marker was found and the ties were updated

Updated reference ties are as shown below.



NOTE:
All measurements
taken to the
bottom of iron pipe



Revision Date
6/22/17

N.A.D. 1983 Coordinates
(1996 Adjustment)

County Project Coordinates	
Northing	164154.1532
Easting	553117.4521
Date	2/18/98

I hereby certify that this United States public land survey monument record is correct and complete to the best of my knowledge and belief.

Larry D. Hoium Date 6/30/17

Larry D. Hoium, Anoka County Surveyor
Minnesota License Number 18165

HISTORY OF GOVERNMENT CORNER

Page No. 5

County of Anoka

State of Minnesota

Northeast Corner of Sec. 3 Township 31 Range 22

CORNER HISTORY:

September 30, 1975 - Found 6" Iron Pipe. Established ties to monument.

August 14, 1985 - Found Iron Pipe and updated ties.

May 8, 1989 - Found Iron Pipe and updated ties.

June 12, 1996 - Found Iron Pipe and updated ties.

February 18, 1998 - Found Iron Pipe and established NAD 1983 (1996 Adjustment) Anoka County Project Coordinates by Static GPS methods. Updated ties.

January 10, 2011 - Found 6" Iron Pipe up 7'± leaning to the northeast and updated ties.

January 12, 2017 - Found 6" Iron Pipe up 7'± leaning to the northeast and updated ties.