

# CERTIFICATE OF LOCATION OF GOVERNMENT CORNER

County of Anoka

State of Minnesota

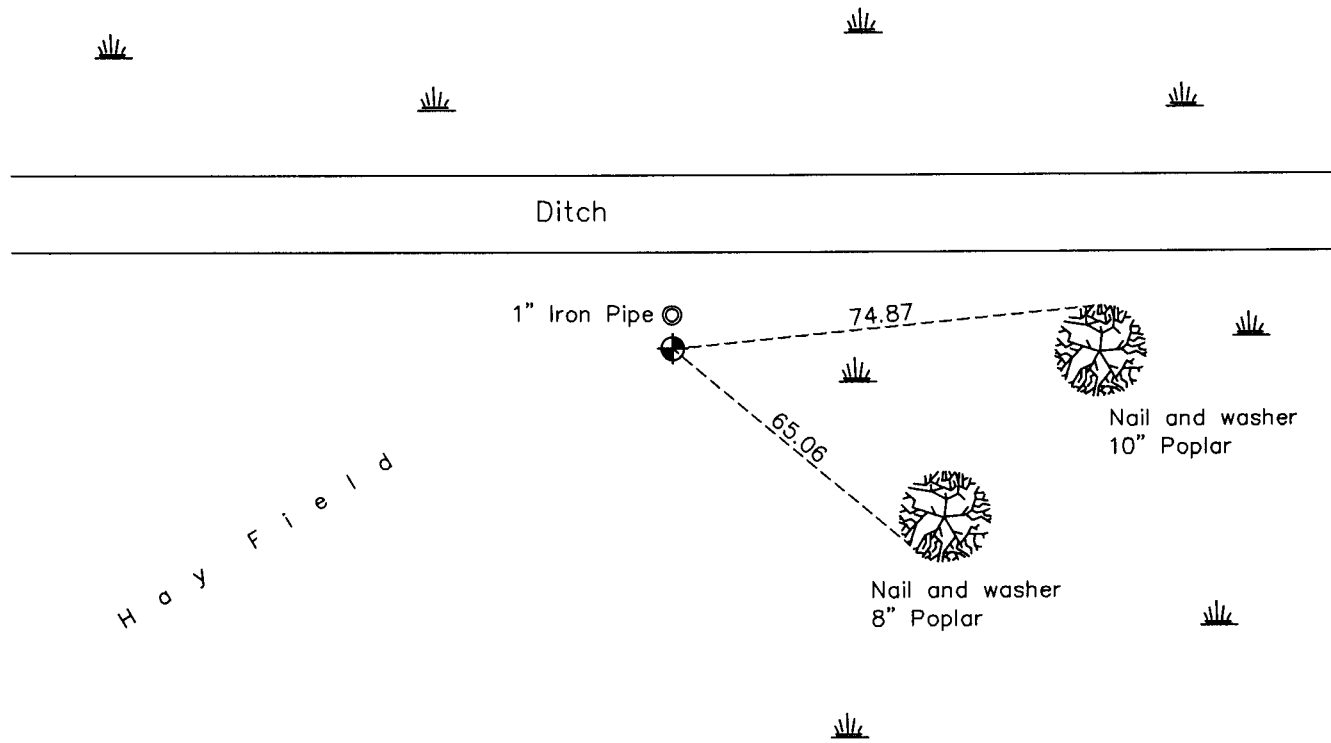
## Northwest Corner of Sec. 3 Township 31 Range 22

On the 3rd day of February, 1964, the described corner was evidenced by a 1/2" iron pipe

and to perpetuate the location of said corner, at the exact location thereof, a permanent marker was placed consisting of a cast iron monument with a sign and post on the east side

AND on the 13th day of September, 2010, said permanent marker was found broken off with a 1" galvanized pipe up 7'± on the north side. Monument will be reset at a later date.

Updated reference ties are as shown below.



N

S

Revision Date

12/21/10

N.A.D. 1983 Coordinates  
(1996 Adjustment)

County Project Coordinates	
Northing	<u>164104.3334</u>
Easting	<u>547907.8227</u>
Date	<u>2/05/98</u>

I hereby certify that this United States public land survey monument record is correct and complete to the best of my knowledge and belief.

*Larry D. Hoium* Date 12/21/10

Larry D. Hoium, Anoka County Surveyor

Minnesota License Number 18165