

CERTIFICATE OF LOCATION OF GOVERNMENT CORNER

County of Anoka

State of Minnesota

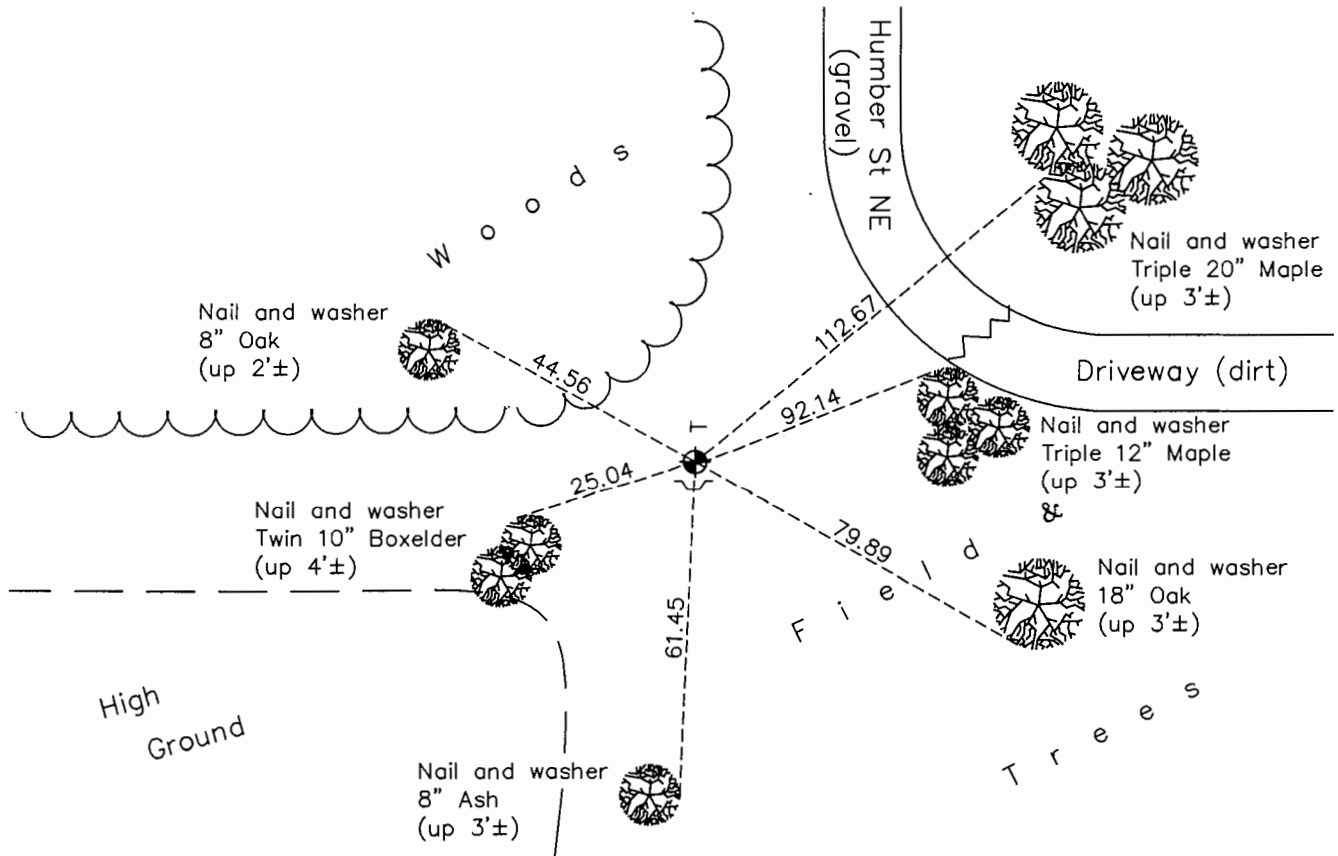
North 1/4 Corner of Sec. 4 Township 31 Range 22

On the 14th day of May, 1963, the described corner was evidenced by a concrete monument

and to perpetuate the location of said corner, at the exact location thereof, a permanent marker was placed consisting of a cast iron monument with a sign and post on the south side and a steel "T" post on the north side

AND on the 3rd day of August, 2016, said permanent marker was found down 0.3'± and the ties were updated

Updated reference ties are as shown below.



N

S

Revision Date

2/8/17

N.A.D. 1983 Coordinates
(1996 Adjustment)

| County Project Coordinates | |
|----------------------------|-------------|
| Northing | 164105.4391 |
| Easting | 545293.4806 |
| Date | 3/05/98 |

I hereby certify that this United States public land survey monument record is correct and complete to the best of my knowledge and belief.

Date 6/28/17

Larry D. Hoium, Anoka County Surveyor
 Minnesota License Number 18165

HISTORY OF GOVERNMENT CORNER

Page No. 9

County of Anoka

State of Minnesota

North 1/4 Corner of Sec. 4 Township 31 Range 22

CORNER HISTORY:

June 15, 1949 - Baden - Spohn found Concrete Monument flush with the surface. Established ties to monument.

May 14, 1963 - Found Concrete Monument down 0.3'± with pinched iron pipe on the North side. Updated ties.

June 18, 1965 - Found Concrete Monument flush with the surface with pinched iron pipe on the North side. Updated ties.

August 12, 1969 - Found Concrete Monument flush with the surface with pinched iron pipe on the North side. Updated ties.

July 17, 1973 - Replaced Concrete Monument with Cast Iron Monument set flush with the surface and updated ties.

May 16, 1977 - Found Cast Iron Monument and updated ties.

July 29, 1986 - Found Cast Iron Monument and updated ties.

June 27, 1991 - Found Cast Iron Monument and updated ties.

June 20, 1996 - Found Cast Iron Monument with a steel post on north side and a sign and post on the south side. Updated ties.

March 5, 1998 - Found Cast Iron Monument with a steel post on the north side and a sign and post on the south side. Established NAD 1983 (1996 Adjustment) Anoka County Project Coordinates by Static GPS methods. Updated ties.

September 22, 2010 - Found Cast Iron Monument with a sign and post on the south side and a steel post on north side. Updated ties.

August 3, 2016 - Found Cast Iron Monument down 0.3'± with a sign and post on the south side and a steel "T" post on north side. Updated ties.