

CERTIFICATE OF LOCATION OF GOVERNMENT CORNER

County of Anoka

State of Minnesota

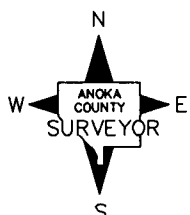
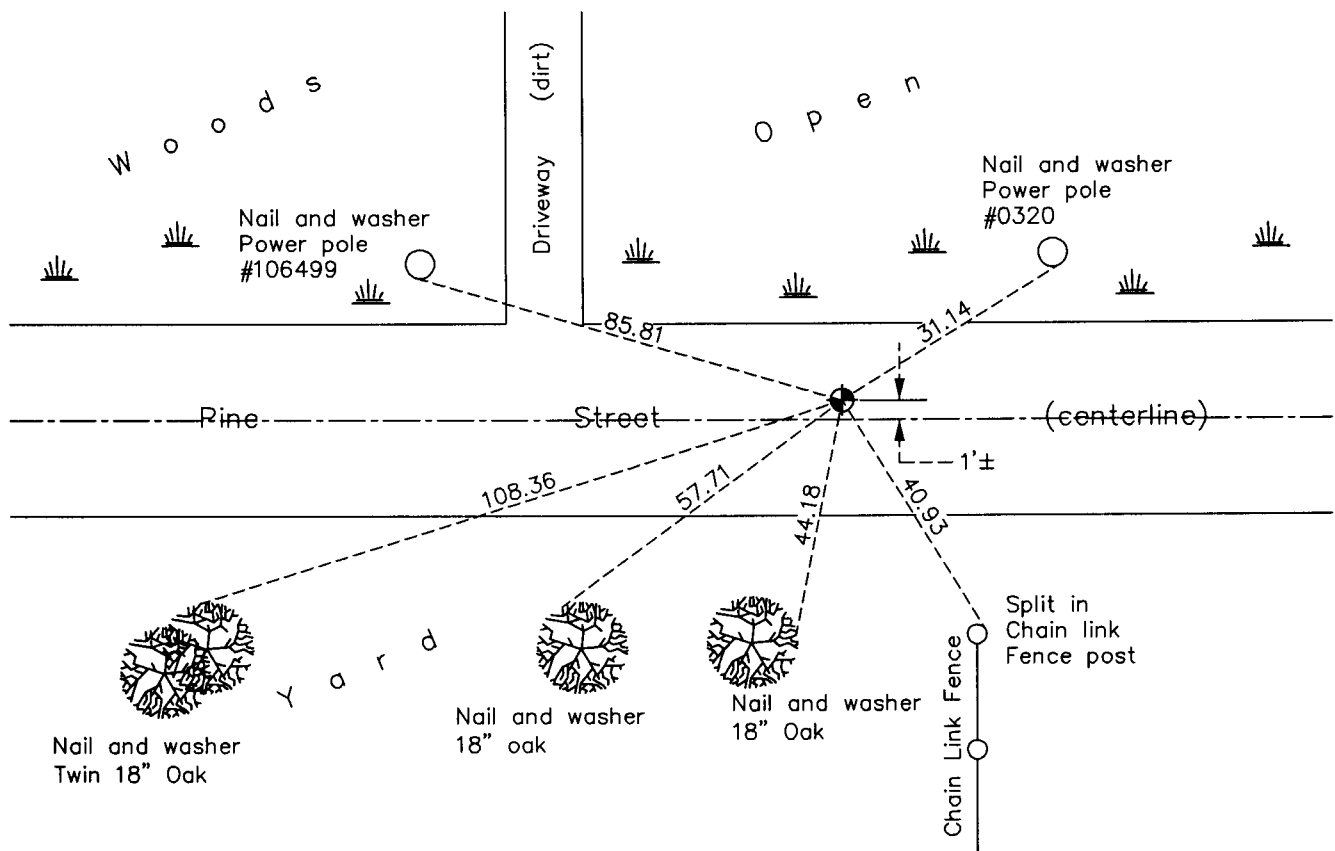
North $\frac{1}{4}$ Corner of Sec. 5 Township 31 Range 22

On the 17th day of May, 1963, the described corner was evidenced by a concrete monument

and to perpetuate the location of said corner, at the exact location thereof, a permanent marker was placed consisting of a cast iron monument (down 1'±)

AND on the 26th day of July, 2010, said permanent marker was found with a 1" iron pipe on top of the cast iron monument and the ties were updated

Updated reference ties are as shown below.



Revision Date
12/22/10

N.A.D. 1983 Coordinates
(1996 Adjustment)

County Project Coordinates	
Northing	164102.2607
Easting	540028.6503
Date	5/02/98

I hereby certify that this United States public land survey monument record is correct and complete to the best of my knowledge and belief.

Larry D. Hoium Date 12/22/10

Larry D. Hoium, Anoka County Surveyor

Minnesota License Number 18165