

CERTIFICATE OF LOCATION OF GOVERNMENT CORNER

County of Anoka

State of Minnesota

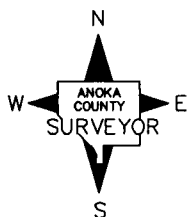
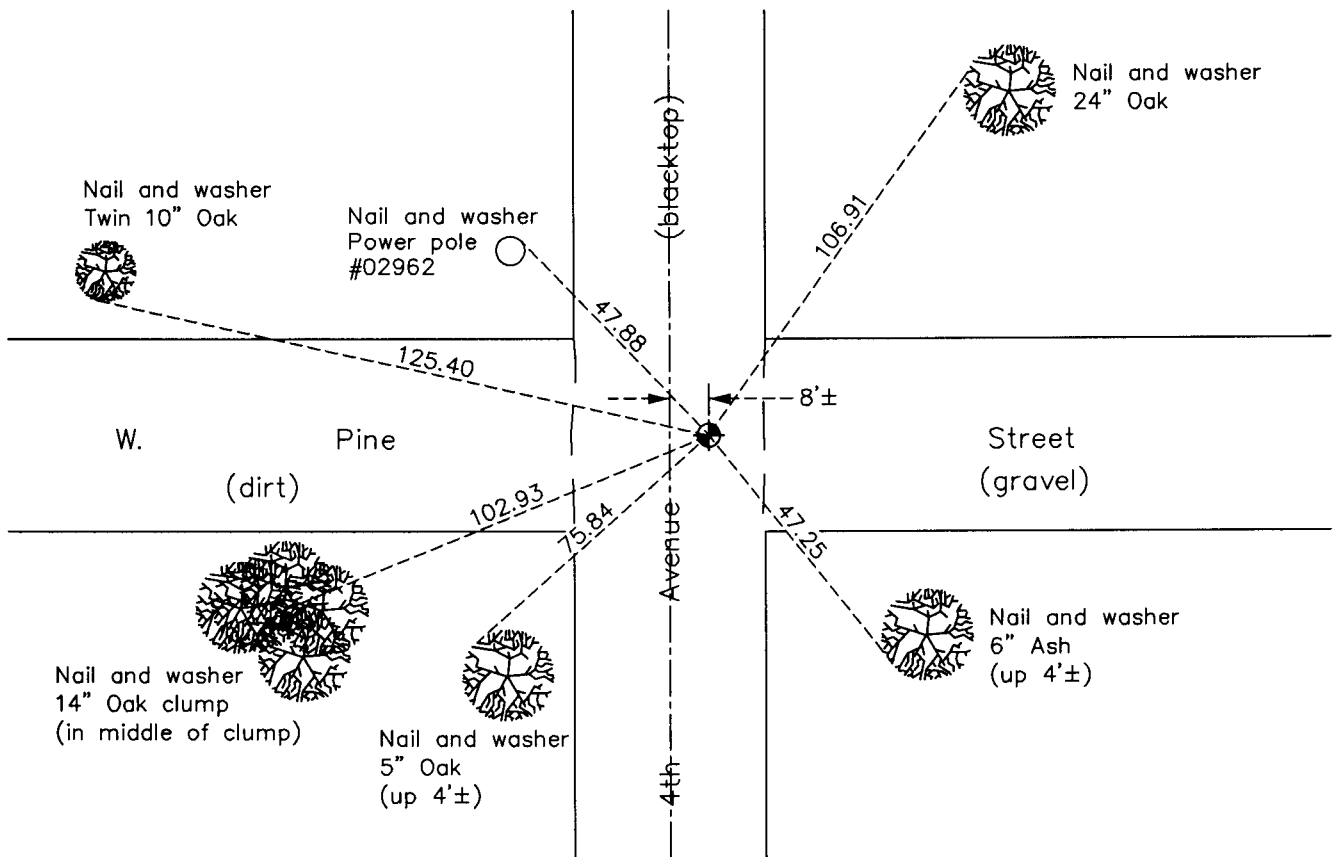
Northwest Corner of Sec. 5 Township 31 Range 22

On the 13th day of March, 1962, the described corner was evidenced by a concrete monument

and to perpetuate the location of said corner, at the exact location thereof, a permanent marker was placed consisting of a cast iron monument (down 1.5'±)

AND on the 18th day of June, 2010, said permanent marker was found with an iron pipe on top of the cast iron monument and the ties were updated

Updated reference ties are as shown below.



Revision Date

12/22/10

N.A.D. 1983 Coordinates
(1996 Adjustment)

County Project Coordinates	
Northing	164105.2266
Easting	537412.0504
Date	3/02/98

I hereby certify that this United States public land survey monument record is correct and complete to the best of my knowledge and belief.

Larry D. Hoium Date 12/22/10

Larry D. Hoium, Anoka County Surveyor

Minnesota License Number 18165