

CERTIFICATE OF LOCATION OF GOVERNMENT CORNER

County of Anoka

State of Minnesota

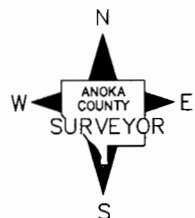
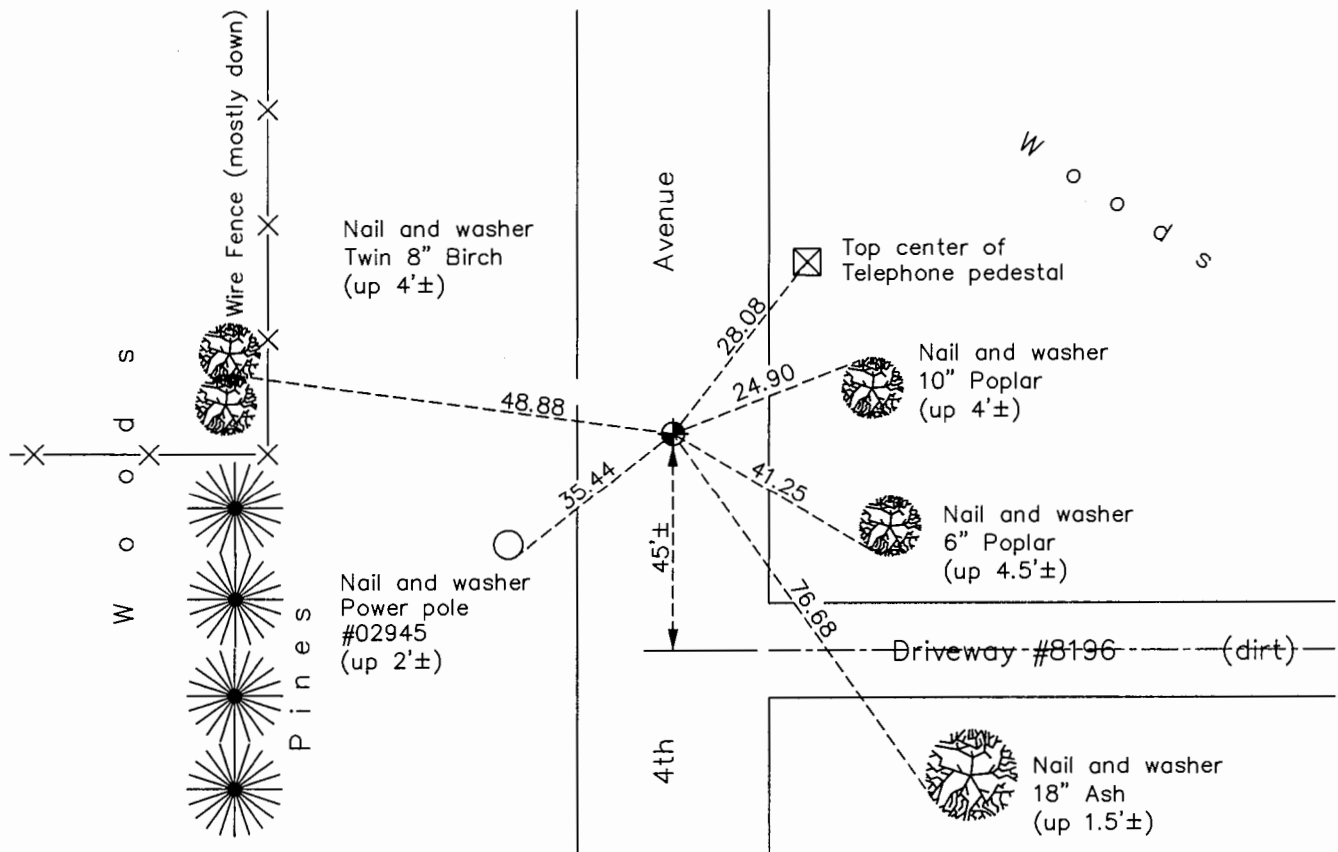
West 1/4 Corner of Sec. 5 Township 31 Range 22

On the 20th day of May, 1963, the described corner was evidenced by area resurvey

and to perpetuate the location of said corner, at the exact location thereof, a permanent marker was placed consisting of a cast iron monument

AND on the 21st day of September, 2016, said permanent marker was found flush with the surface and the ties were updated

Updated reference ties are as shown below.



Revision Date

1/17/17

N.A.D. 1983 Coordinates
(1996 Adjustment)

County Project Coordinates	
Northing	<u>161565.1302</u>
Easting	<u>537327.3189</u>
Date	<u>1/26/98</u>

I hereby certify that this United States public land survey monument record is correct and complete to the best of my knowledge and belief.

Larry D. Hoium Date 6/28/17

Larry D. Hoium, Anoka County Surveyor
Minnesota License Number 18165

HISTORY OF GOVERNMENT CORNER

Page No. 16

County of Anoka

State of Minnesota

West 1/4 Corner of Sec. 5 Township 31 Range 22

CORNER HISTORY:

May 20, 1963 - Set Cast Iron monument down 0.6'± using area resurvey and established ties to monument.

June 17, 1965 - Found Cast Iron Monument and updated ties.

August 13, 1969 - Found Cast Iron Monument and updated ties.

June 14, 1973 - Replaced Cast Iron Monument with extendible Cast Iron Monument and updated ties.

August 17, 1976 - Found Cast Iron Monument and updated ties.

July 30, 1980 - Found Cast Iron Monument and updated ties.

June 2, 1983 - Found Cast Iron Monument and updated ties.

July 18, 1986 - Found Cast Iron Monument and updated ties.

March 6, 1989 - Found Cast Iron Monument and updated ties.

June 28, 1991 - Found Cast Iron Monument and updated ties.

January 26, 1998 - Found Cast Iron Monument and established NAD 1983 (1996 Adjustment) Anoka County Project Coordinates by Static GPS methods. Updated ties.

June 17, 2010 - Found Cast Iron Monument flush with the surface and updated ties.

September 21, 2016 - Found Cast Iron Monument flush with the surface and updated ties. Verified location of corner by VRS GPS methods.