

# CERTIFICATE OF LOCATION OF GOVERNMENT CORNER

County of Anoka

State of Minnesota

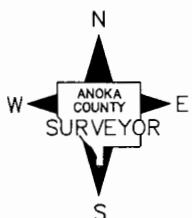
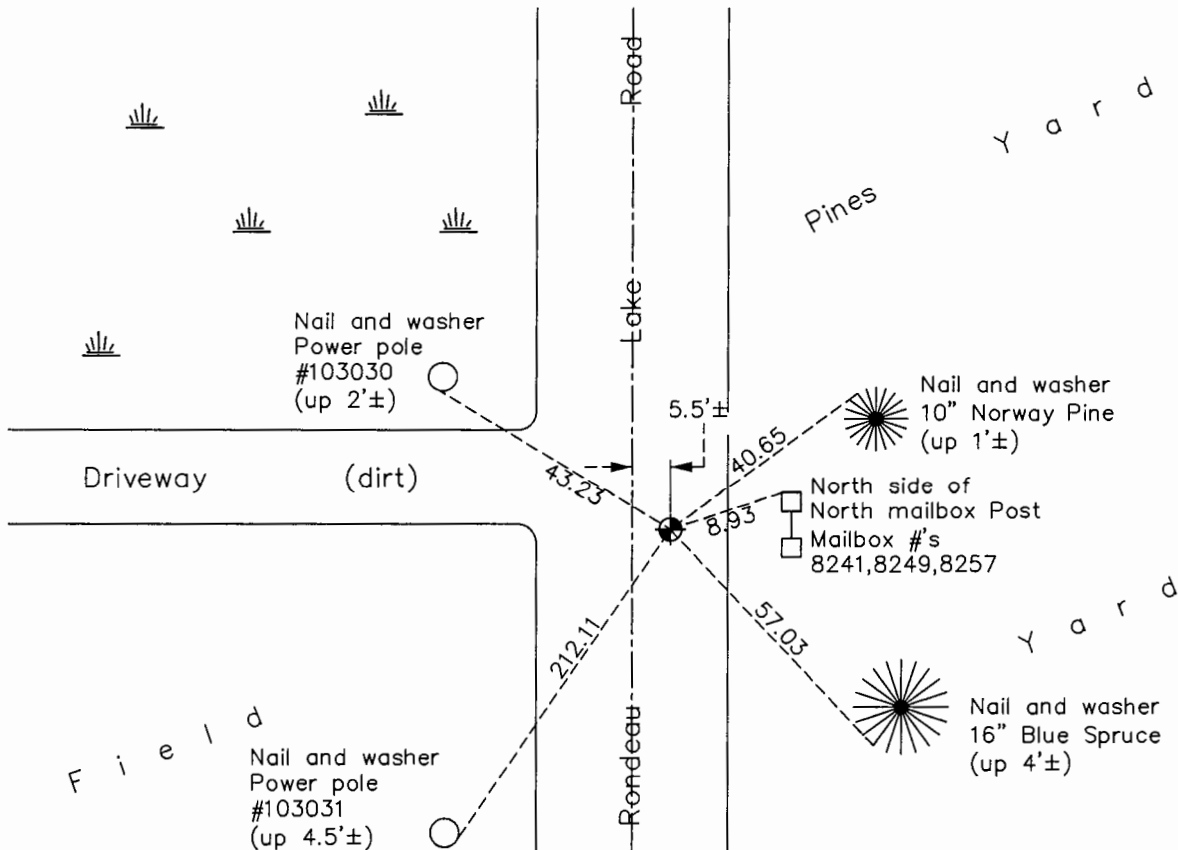
## West 1/4 Corner of Sec. 3 Township 31 Range 22

On the 18th day of June, 1965, the described corner was evidenced by a 1/2" iron pipe

and to perpetuate the location of said corner, at the exact location thereof, a permanent marker was placed consisting of a cast iron monument

AND on the 22nd day of September, 2016, said permanent marker was found flush with the surface and the ties were updated

Updated reference ties are as shown below.



Revision Date  
1/17/17

N.A.D. 1983 Coordinates  
(1996 Adjustment)

County Project Coordinates	
Northing	161463.6889
Easting	547823.6269
Date	2/05/98

I hereby certify that this United States public land survey monument record is correct and complete to the best of my knowledge and belief.

*Larry D. Hoium* Date 6/28/17

Larry D. Hoium, Anoka County Surveyor  
Minnesota License Number 18165

# HISTORY OF GOVERNMENT CORNER

Page No. 18

County of Anoka

State of Minnesota

West 1/4 Corner of Sec. 3 Township 31 Range 22

## **CORNER HISTORY:**

March 10, 1950 - Jackson found Iron Pipe. Established ties to monument.

May 11, 1961- Monument not found. Updated ties.

June 18, 1965 - Found 1/2" Iron Pipe down 0.5'± using Jackson's ties. Pipe does not appear to be as old as ties.

August 11, 1969 - Replaced 1/2" Iron Pipe down 0.8'± with Cast Iron Monument set flush with the surface and 5.5'± east of centerline. Updated ties.

May 16, 1977 - Set Cast Iron Monument flush with the surface using ties and updated ties. Set P.K. nails 2.00' north and east of monument.

August 1, 1980 - Found Cast Iron Monument and updated ties.

November 17, 1992 - Found Cast Iron Monument and updated ties.

June 12, 1996 - Found Cast Iron Monument and updated ties.

February 5, 1998 - Found Cast Iron Monument and established NAD 1983 (1996 Adjustment) Anoka County Project Coordinates by Static GPS methods. Updated ties.

June 15, 2010 - Found Cast Iron Monument flush with the surface and updated ties.

September 22, 2016 - Found Cast Iron Monument flush with the surface and updated ties. Verified location of corner by VRS GPS methods