

CERTIFICATE OF LOCATION OF GOVERNMENT CORNER

County of Anoka

State of Minnesota

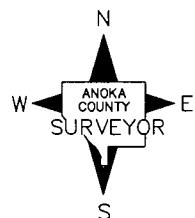
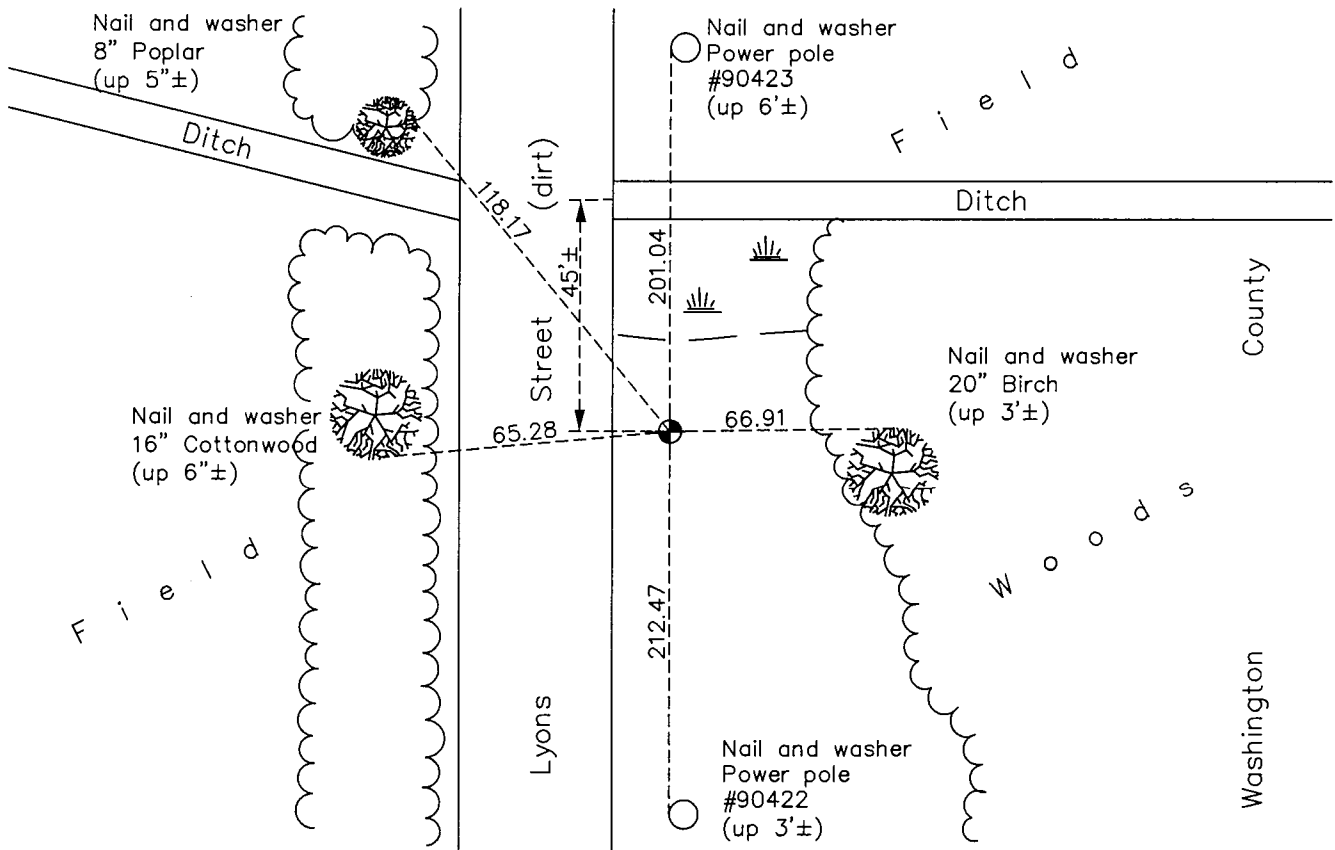
East 1/4 Corner of Sec. 1 Township 31 Range 22

On the 15th day of August, 1979, the described corner was evidenced by a Washington County monument

and to perpetuate the location of said corner, at the exact location thereof, a permanent marker was placed consisting of the same Washington County monument

AND on the 23rd day of September, 2016, said permanent marker was found on east edge of road (down 1.5'±) and the ties were updated. Monument leaning easterly.

Updated reference ties are as shown below.



Revision Date

1/18/17

N.A.D. 1983 Coordinates
(1996 Adjustment)

County Project Coordinates

Northing 161466.5995

Easting 563618.4567

Date 2/25/98

I hereby certify that this United States public land survey monument record is correct and complete to the best of my knowledge and belief.

Larry D. Hoium Date 6/28/17

Larry D. Hoium, Anoka County Surveyor

Minnesota License Number 18165

HISTORY OF GOVERNMENT CORNER

Page No. 21

County of Anoka

State of Minnesota

East 1/4 Corner of Sec. 1 Township 31 Range 22

CORNER HISTORY:

April 9, 1974- Found Washington County Cast Iron monument. Established ties to monument.

August 3, 1979 - Corner and ties missing.

August 15, 1979 - Paul A. Johnson, Washington Co Surveyor set Washington County Cast Iron Monument flush with the surface using NW and SW corners and proportionate distances. Established ties to monument.

March 16, 1987- Found Washington County Cast Iron monument down 0.5'± and leaning. Straightened and updated ties. Sign and post on the east side.

October 17, 1996- Found Washington County Cast Iron monument and updated ties.

May 12, 1997- Found Washington County Cast Iron monument and updated ties.

February 25, 1998- Found Washington County Cast Iron monument and established NAD 1983 (1996 Adjustment) Anoka County Project Coordinates by Static GPS methods. Updated ties.

July 21, 2010 - Found Washington County Cast Iron monument near east edge of road down 1.0'± and updated ties.

September 23, 2016 - Found Washington County Cast Iron monument leaning easterly on east side of road down 1.5'±. Verified location of corner by VRS GPS methods. Updated ties.