

CERTIFICATE OF LOCATION OF GOVERNMENT CORNER

County of Anoka

State of Minnesota

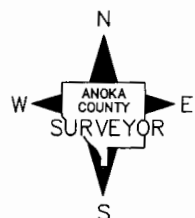
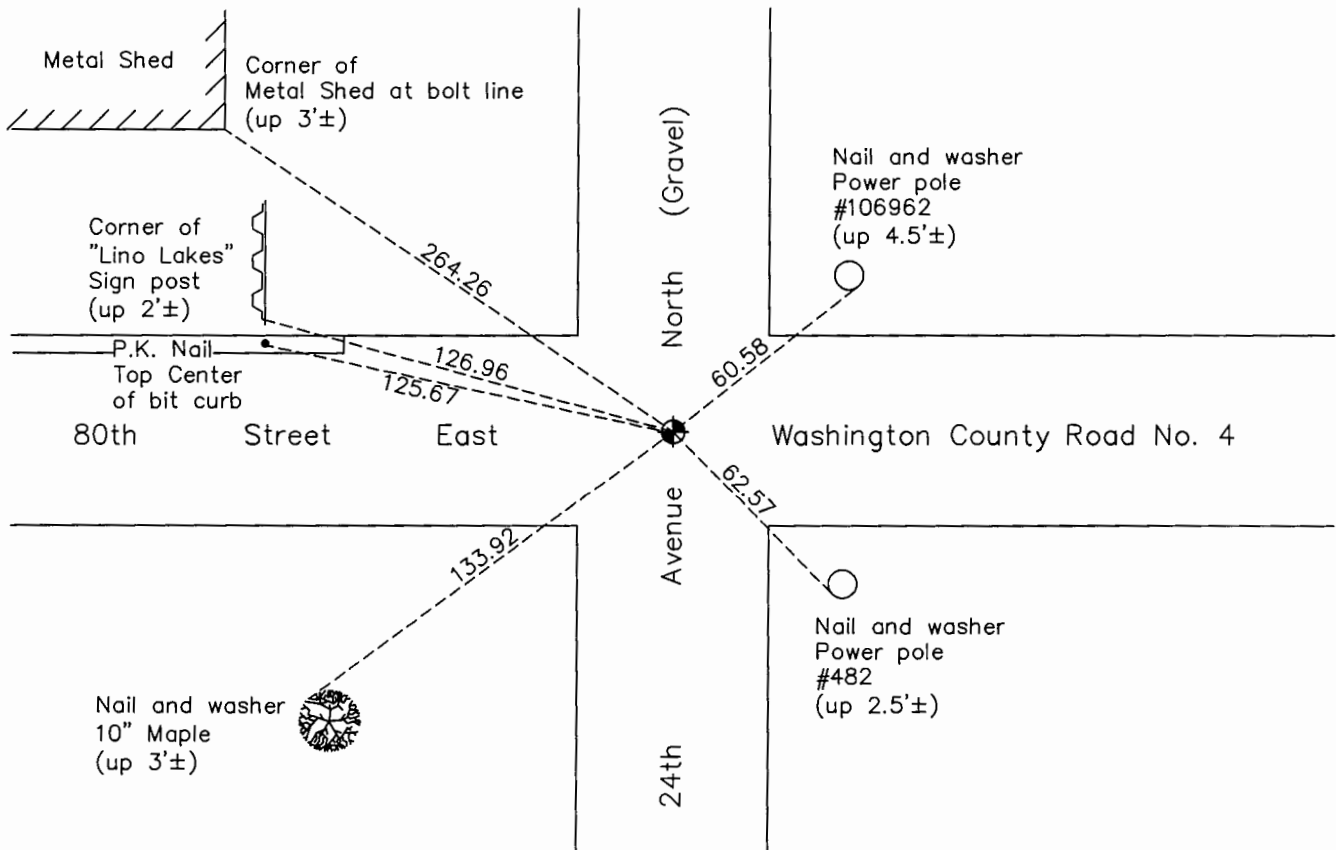
Southeast Corner of Sec. 1 Township 31 Range 22

On the 7th day of August, 1964, the described corner was evidenced by an axle shaft

and to perpetuate the location of said corner, at the exact location thereof, a permanent marker was placed consisting of a cast iron monument

AND on the 23rd day of September, 2016, said permanent marker was not uncovered, found Mag Spike on surface and the ties were updated

Updated reference ties are as shown below.



Revision Date

2/10/17

N.A.D. 1983 Coordinates
(1996 Adjustment)

County Project Coordinates	
Northing	158852.9232
Easting	563591.9546
Date	2/03/98

I hereby certify that this United States public land survey monument record is correct and complete to the best of my knowledge and belief.

Date 6/28/17

 Larry D. Hoium, Anoka County Surveyor
 Minnesota License Number 18165

HISTORY OF GOVERNMENT CORNER

Page No. 22

County of Anoka

State of Minnesota

Southeast Corner of Sec. 1 Township 31 Range 22

CORNER HISTORY:

No Date - Anoka County Highway Department found Lead Pipe. Established ties to monument.

August 7, 1964 - Found Axle shaft down 20" along side 3" Oak post down 0.3'±. Set Cast Iron Monument down 0.2' in centerline-centerline of intersection. Updated ties.

June 22, 1965 - Found Cast Iron Monument and updated ties.

August 1, 1969 - Replaced broken Cast Iron Monument with Cast Iron Monument down 0.5'± in centerline-centerline of intersection and updated ties.

June 21, 1973 - Found Cast Iron Monument and updated ties.

August 18, 1976 - Found Cast Iron Monument and updated ties.

October 24, 1991 - Found Cast Iron Monument and updated ties.

June 28, 1996 - Found Cast Iron Monument and updated ties.

February 3, 1998 - Found Cast Iron Monument and established NAD 1983 (1996 Adjustment) Anoka County Project Coordinates by Static GPS methods. Updated ties.

July 21, 2010 - Found Cast Iron Monument down 0.2'± and updated ties.

September 23, 2016 - Cast Iron Monument was not uncovered. Found Mag Spike at the surface. Verified location of corner by VRS GPS methods. Updated ties.