

# CERTIFICATE OF LOCATION OF GOVERNMENT CORNER

County of Anoka

State of Minnesota

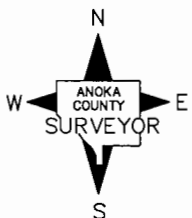
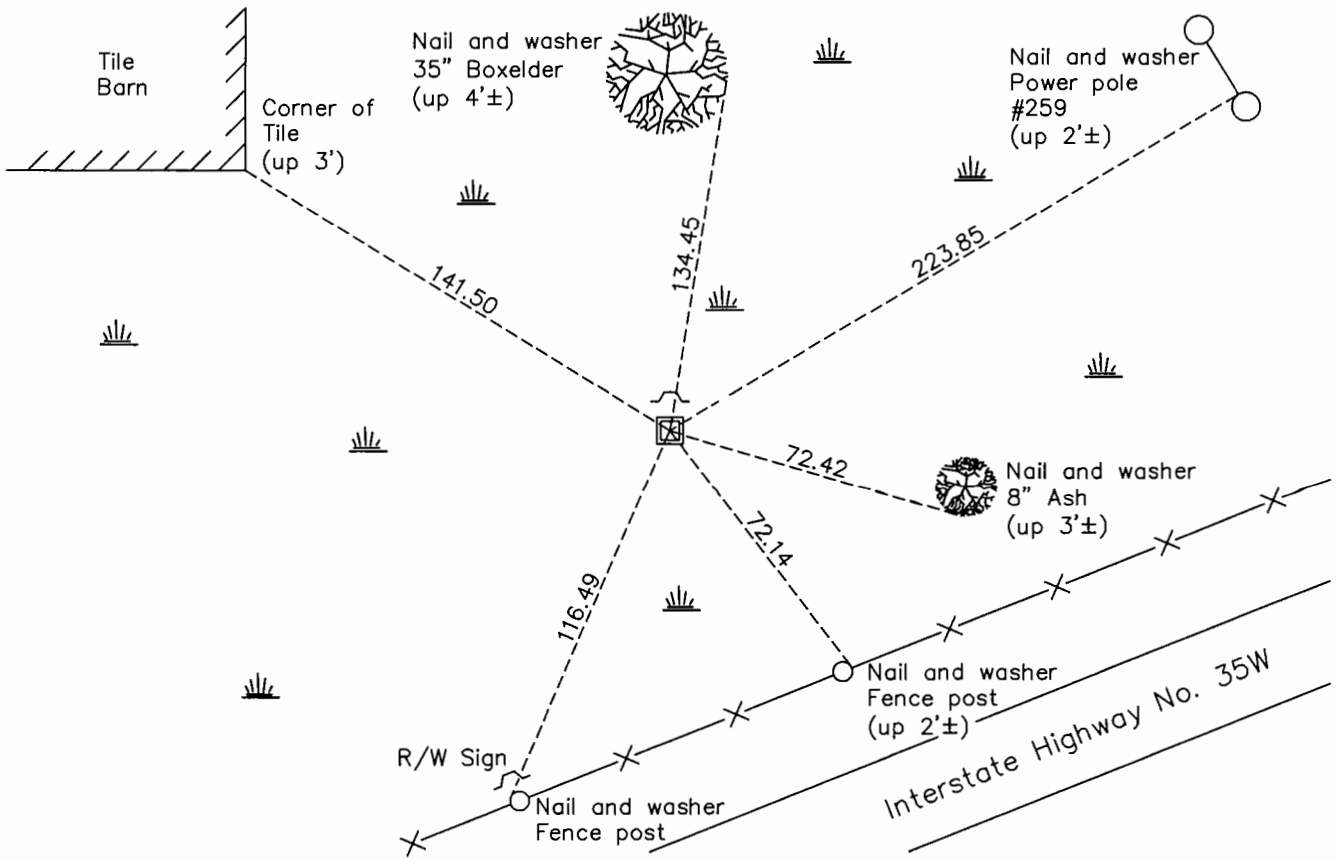
## Southwest Corner of Sec. 2 Township 31 Range 22

On the 7th day of August, 1969, the described corner was evidenced by a 6" X 4" oval stone

and to perpetuate the location of said corner, at the exact location thereof, a permanent marker was placed consisting of a red and white 2" square steel Telespar monument up 1'± with a 'County Surveyor' cap and punch mark

AND on the 31st day of January, 2017, said permanent marker was found and the ties were updated

Updated reference ties are as shown below.



Revision Date  
4/26/17

N.A.D. 1983 Coordinates  
(1996 Adjustment)

County Project Coordinates	
Northing	<u>158911.1346</u>
Easting	<u>553010.1196</u>
Date	<u>3/29/06</u>

I hereby certify that this United States public land survey monument record is correct and complete to the best of my knowledge and belief.

*Larry D. Hoium* Date 6/30/17

Larry D. Hoium, Anoka County Surveyor  
Minnesota License Number 18165

# HISTORY OF GOVERNMENT CORNER

Page No. 26

County of Anoka

State of Minnesota

Southwest Corner of Sec. 2 Township 31 Range 22

## **CORNER HISTORY:**

August 25, 1948 - Cartwright found Granite Monument. Established ties to monument.

January 5, 1962 - Found Iron Pipe up 1.0'±, Granite Monument was not located due to frozen ground. Updated ties.

March 16, 1966 - Found Iron Pipe and set sign an post on the southeast side. Updated ties.

August 7, 1969 - Found 6"X4" Oval Stone south of Iron Pipe with "X" on the top. Sign and post on the north side of iron pipe up 6'±. Updated ties.

August 5, 1980 - Found Oval Stone and updated ties.

July 30, 1986 - Found Oval Stone and updated ties.

July 11, 1996 - Found Oval Stone and updated ties.

October 9, 1998 - Found Oval Stone and updated ties.

March 29, 2006 - Found Oval Stone and established NAD 1983 ( 1996 Adjustment) Anoka County Project Coordinates by Static GPS methods.

January 10, 2011 - Found Oval Stone and updated ties.

March 15, 2011 - Replaced Oval Stone with a red and white 2" square steel Telespar Monument up 1'± with a 'County Surveyor' cap and punch mark. Verified location of corner by VRS GPS methods. Updated ties.

January 31, 2017 - Found a red and white 2" square steel Telespar Monument up 1'± with a 'County Surveyor' cap and punch mark. Verified location of corner by VRS GPS methods. Updated ties.