

CERTIFICATE OF LOCATION OF GOVERNMENT CORNER

County of Anoka

State of Minnesota

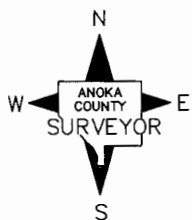
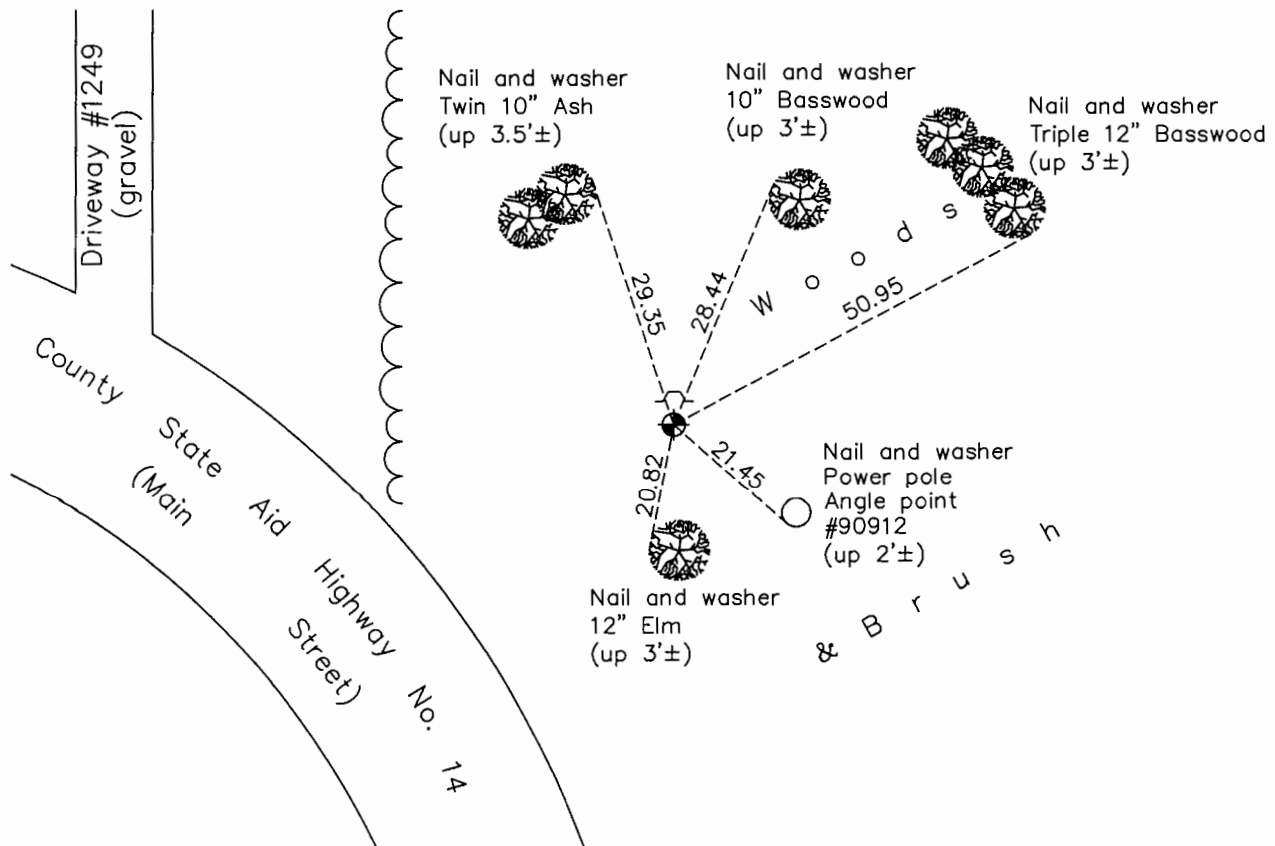
Witness Corner of Sec. 10 Township 31 Range 22
 (on north line of NW 1/4)

On the 28th day of January, 1979, the described corner was evidenced by area resurvey

and to perpetuate the location of said corner, at the exact location thereof, a permanent marker was placed consisting of a cast iron monument with a sign and post on north side

AND on the 10th day of October, 2016, said permanent marker was found and the ties
were updated.

Updated reference ties are as shown below.



Revision Date
1/23/17

N.A.D. 1983 Coordinates
 (1996 Adjustment)

County Project Coordinates	
Northing	<u>158840.2006</u>
Easting	<u>548682.6334</u>
Date	<u>6/24/96</u>

I hereby certify that this United States public land survey monument record is correct and complete to the best of my knowledge and belief.

Date 6/28/17
 Larry D. Hoium, Anoka County Surveyor
 Minnesota License Number 18165

HISTORY OF GOVERNMENT CORNER

Page No. 27B

County of Anoka

State of Minnesota

Witness Corner of Sec. 10 Township 31 Range 22
(on north line of NW 1/4)

CORNER HISTORY:

June 28, 1979 - Set Cast Iron Monument flush with the surface using area resurvey. Set sign and post on the north side. Established ties to monument.

December 24, 1990 - Found Cast Iron Monument and updated ties.

October 23, 1991 - Found Cast Iron Monument with sign and post on the north side. Updated ties.

June 24, 1996 - Found Cast Iron Monument and established NAD 1983 (1996 Adjustment) Anoka County Project Coordinates by Static GPS methods. Updated ties.

June, 2010 - Found Cast Iron Monument with sign and post on the north side of monument. Updated ties.

October 10, 2016 - Found Cast Iron Monument with sign and post on the north side. Updated ties.