

CERTIFICATE OF LOCATION OF GOVERNMENT CORNER

County of Anoka

State of Minnesota

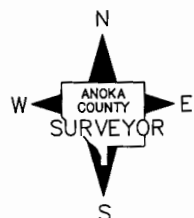
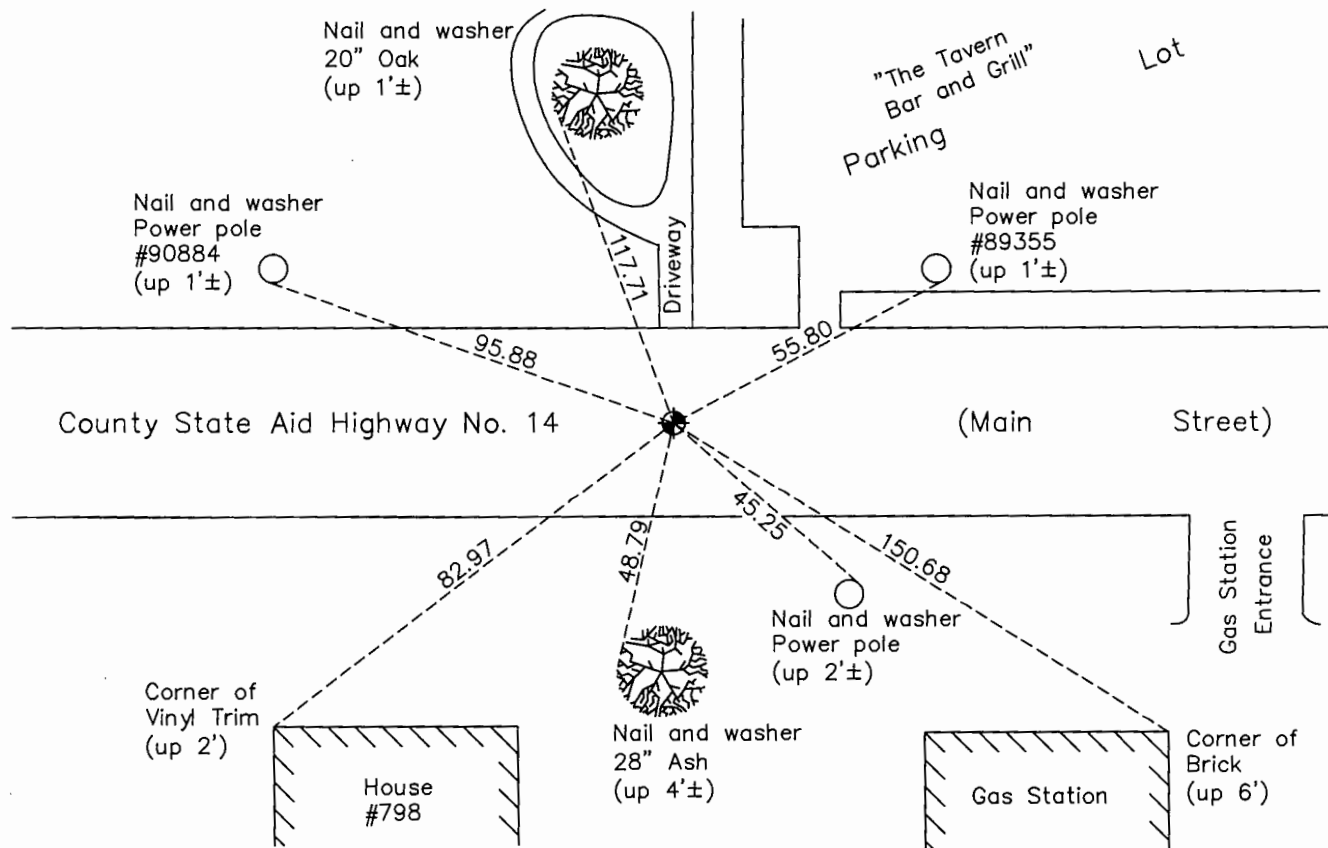
Southwest Corner of Sec. 4 Township 31 Range 22

On the 14th day of March, 1962, the described corner was evidenced by a concrete monument

and to perpetuate the location of said corner, at the exact location thereof, a permanent marker was placed consisting of a cast iron monument

AND on the 10th day of January, 2017, said permanent marker was found flush with the surface and updated ties.

Updated reference ties are as shown below.



Revision Date

5/1/17

N.A.D. 1983 Coordinates
(1996 Adjustment)

County Project Coordinates	
Northing	158872.8498
Easting	542475.0397
Date	1/21/98

I hereby certify that this United States public land survey monument record is correct and complete to the best of my knowledge and belief.

Larry D. Hoium Date 6/30/17

Larry D. Hoium, Anoka County Surveyor
Minnesota License Number 18165

HISTORY OF GOVERNMENT CORNER

Page No. 30

County of Anoka

State of Minnesota

Southwest Corner of Sec. 4 Township 31 Range 22

CORNER HISTORY:

October 10, 1943 - Cartwright found Concrete Monument. Established ties to monument.

March 14, 1962 - Found Concrete Monument down 0.5'± with a 3/4" Iron Pipe on north and south sides and nails 2.00' north and west of monument. Updated ties.

June 16, 1965 - Found Concrete Monument and updated ties.

August 13, 1969 - Found Concrete Monument with broken top and updated ties. Set P.K. nails 2.00' north and east of monument.

August 11, 1970 - Set short Cast Iron Monument flush with the surface on top of Concrete Monument and updated ties.

June 14, 1973 - Found Cast Iron Monument and updated ties.

August 18, 1976 - Found Cast Iron Monument and updated ties.

August 6, 1980 - Found Cast Iron Monument and updated ties.

September 1, 1987 - Reset Cast Iron Monument flush with the surface after road construction and updated ties. Set P.K. nails 2.00' north and east.

June 1, 1989 - Found Cast Iron Monument and updated ties.

June 28, 1991 - Found Cast Iron Monument and updated ties.

June 17, 1996 - Found Cast Iron Monument and updated ties.

January 21, 1998 - Found Cast Iron Monument and established NAD 1983 (1996 Adjustment) Anoka County Project Coordinates by Static GPS methods. Updated ties.

July 6, 1999 - Updated ties and removed Cast Iron Monument prior to road construction.

November 9, 1999 - Set Cast Iron Monument flush with surface after road construction and updated ties.

June 17, 2010 - Found Cast Iron Monument flush with the surface and updated ties.

August 16, 2013 - Replaced Cast Iron Monument over found Concrete Monument after road construction. Verified location of corner by VRS GPS methods. Updated ties.

January 10, 2017 - Found Cast Iron Monument flush with the surface and updated ties. Verified location of corner by VRS GPS methods.