

# CERTIFICATE OF LOCATION OF GOVERNMENT CORNER

County of Anoka

State of Minnesota

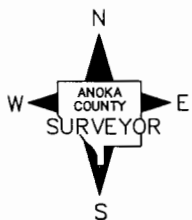
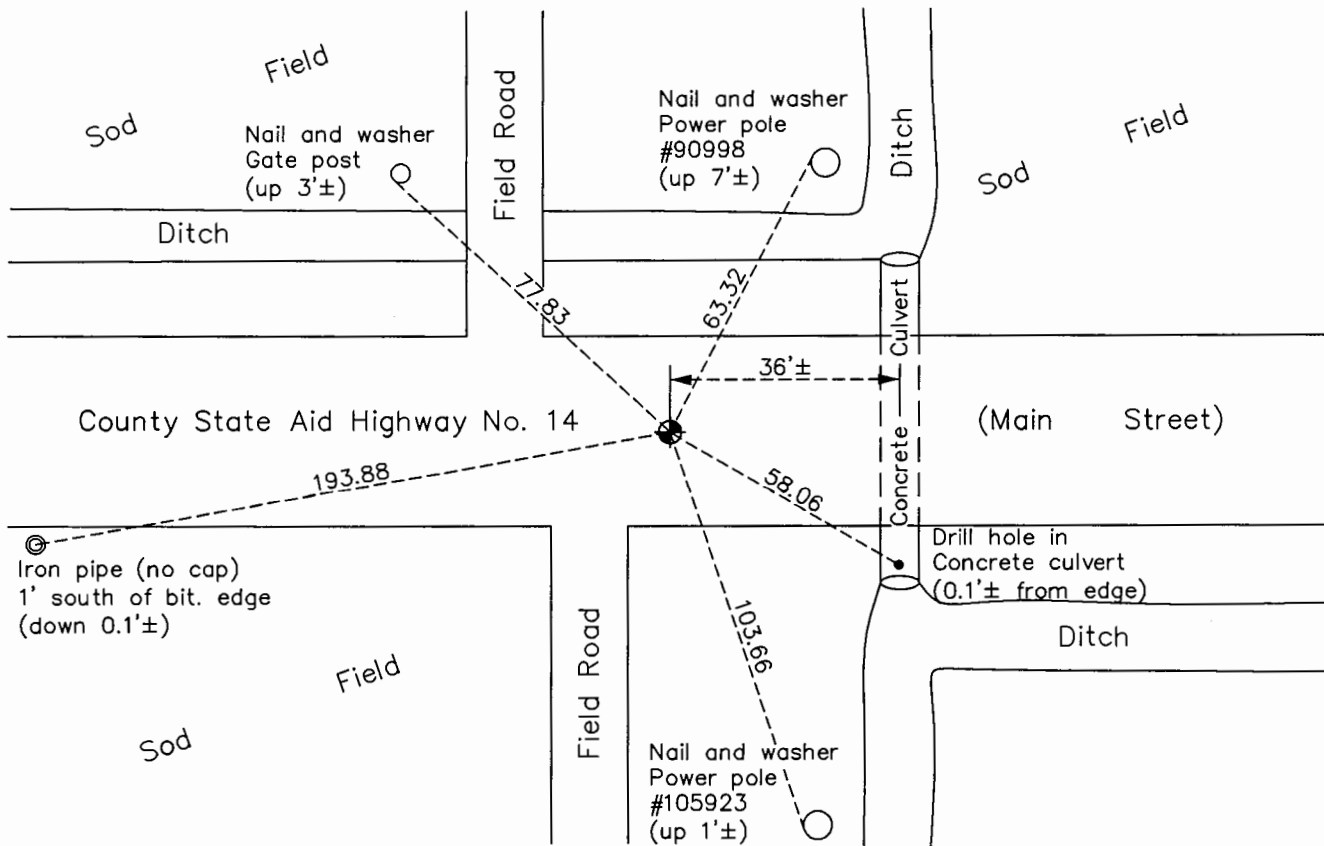
## South $\frac{1}{4}$ Corner of Sec. 6 Township 31 Range 22

On the 20th day of May, 1963, the described corner was evidenced by area resurvey

and to perpetuate the location of said corner, at the exact location thereof, a permanent marker was placed consisting of a cast iron monument

AND on the 19th day of January, 2017, said permanent marker was found flush with the surface and the ties were updated. Monument is on centerline.

Updated reference ties are as shown below.



Revision Date  
5/2/17

N.A.D. 1983 Coordinates  
(1996 Adjustment)

County Project Coordinates	
Northing	158834.1162
Easting	534593.8690
Date	1/21/98

I hereby certify that this United States public land survey monument record is correct and complete to the best of my knowledge and belief.

*Larry D. Hoium* Date 6/30/17

Larry D. Hoium, Anoka County Surveyor  
Minnesota License Number 18165

# HISTORY OF GOVERNMENT CORNER

Page No. 33

County of Anoka

State of Minnesota

South 1/4 Corner of Sec. 6 Township 31 Range 22

## **CORNER HISTORY:**

May 20, 1963 - Set Cast Iron Monument flush with the surface with P.K. nails 2.00 north and east using area resurvey. Established ties to monument.

August 12, 1969 - Found Cast Iron Monument and updated ties.

June 15, 1973 - Found Cast Iron Monument and updated ties.

August 18, 1976 - Found Cast Iron Monument and updated ties.

August 5, 1980 - Found Cast Iron Monument and updated ties.

July 11, 1986 - Found Cast Iron Monument and updated ties.

June 28, 1991 - Found Cast Iron Monument and updated ties.

June 27, 1994 - Found Cast Iron Monument and set construction ties prior to road construction.

July 21, 1995 - Reset Cast Iron Monument after road construction and updated ties.

June 17, 1996 - Found Cast Iron Monument and updated ties.

January 21, 1998 - Found Cast Iron Monument and established NAD 1983 (1996 Adjustment) Anoka County Project Coordinates by Static GPS methods. Updated ties.

July 2010 - Found Cast Iron Monument flush with the surface and updated ties.

January 19, 2017 - Found Cast Iron Monument flush with the surface and verified location of corner by VRS GPS methods. Updated ties.