

# CERTIFICATE OF LOCATION OF GOVERNMENT CORNER

County of Anoka

State of Minnesota

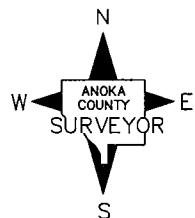
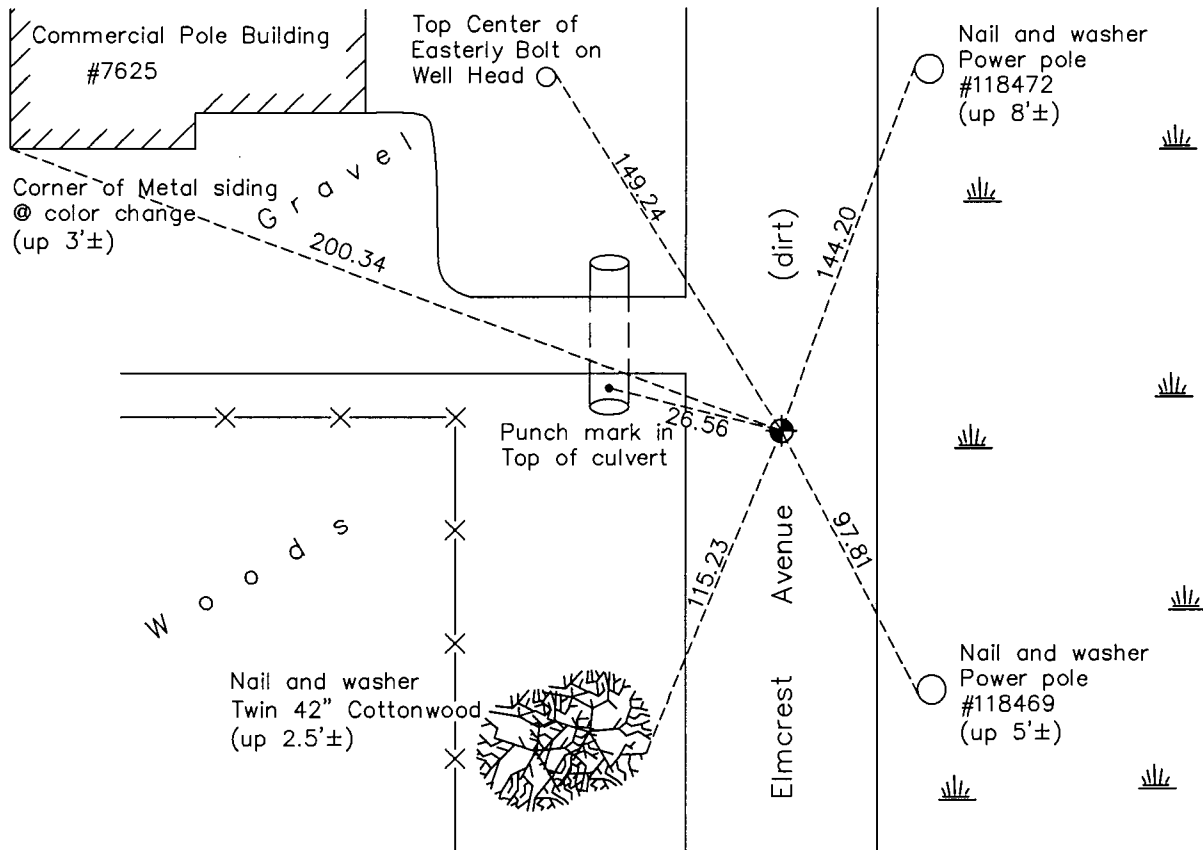
## Southeast Corner of Sec. 12 Township 31 Range 22

On the 10th day of April, 1974, the described corner was evidenced by a Washington County cast iron monument

and to perpetuate the location of said corner, at the exact location thereof, a permanent marker was placed consisting of a cast iron monument

AND on the 26th day of September, 2016, said permanent marker was found down 1.3'± and the ties were updated

Updated reference ties are as shown below.



Revision Date

1/24/17

N.A.D. 1983 Coordinates  
(1996 Adjustment)

County Project Coordinates	
Northing	<u>153621.8068</u>
Easting	<u>563578.6212</u>
Date	<u>2/25/98</u>

I hereby certify that this United States public land survey monument record is correct and complete to the best of my knowledge and belief.

*Larry D. Hoium* Date 6/28/17

Larry D. Hoium, Anoka County Surveyor

Minnesota License Number 18165

# HISTORY OF GOVERNMENT CORNER

Page No. 43

County of Anoka

State of Minnesota

## Southeast Corner of Sec. 12 Township 31 Range 22

### **CORNER HISTORY:**

April 10, 1974 - Found Washington County Cast Iron Monument down 0.2'±. Established ties to monument.

May 17, 1977 - Found Cast Iron Monument and updated ties.

July 25, 1980 - Found Cast Iron Monument and updated ties.

July 7, 1986 - Found Cast Iron Monument and updated ties.

July 1, 1996 - Found Cast Iron Monument and updated ties.

February 25, 1998 - Found Cast Iron Monument and established NAD 1983 (1996 Adjustment) Anoka County Project Coordinates by Static GPS methods. Updated ties.

July 22, 2010 - Found Cast Iron Monument down 1.3'± and updated ties.

September 26, 2016 - Found Cast Iron Monument down 1.3'±. Verified location of corner by VRS GPS methods. Updated ties.