

# CERTIFICATE OF LOCATION OF GOVERNMENT CORNER

County of Anoka

State of Minnesota

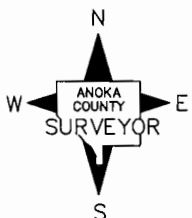
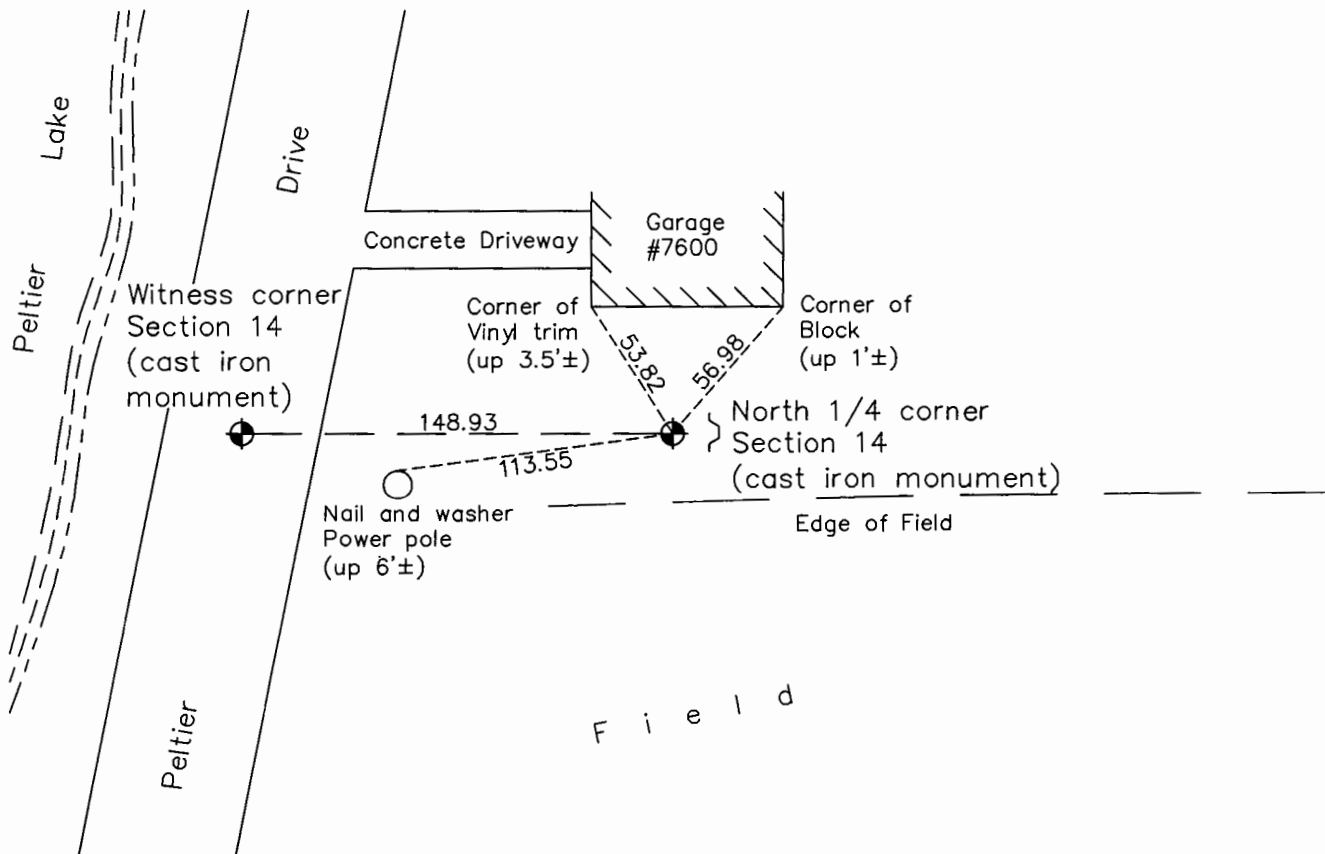
## North 1/4 Corner of Sec. 14 Township 31 Range 22

On the 13th day of January, 1964, the described corner was evidenced by a 4"X4"  
concrete monument

and to perpetuate the location of said corner, at the exact location thereof, a permanent marker  
 was placed consisting of a cast iron monument set on top of the concrete monument with a  
sign and post set on the east side

AND on the 27th day of September, 2016, said permanent marker was found down 0.5'± and  
the ties were updated

Updated reference ties are as shown below.



Revision Date

1/24/17

N.A.D. 1983 Coordinates  
(1996 Adjustment)

County Project Coordinates	
Northing	<u>153601.2444</u>
Easting	<u>555587.3638</u>
Date	<u>2/23/98</u>

I hereby certify that this United States public land survey monument record is correct and complete to the best of my knowledge and belief.

*Larry D. Hoium* Date 6/28/17

Larry D. Hoium, Anoka County Surveyor

Minnesota License Number 18165

# HISTORY OF GOVERNMENT CORNER

Page No. 46

County of Anoka

State of Minnesota

## North 1/4 Corner of Sec. 14 Township 31 Range 22

### **CORNER HISTORY:**

Unknown date - F.R. Kvidera found Concrete Monument at surface.

January 13, 1964 - Found 4" Square Concrete Monument up 0.2'± with 1/2" Iron Pipe up 1.5'± on west side and updated ties.

July 9, 1965 - Found Concrete Monument and updated ties.

August 4, 1969 - Found Concrete Monument with steel sign post on east side up 3'± and updated ties.

July 2, 1973 - Replaced Concrete Monument with Cast Iron Monument. Steel sign post on east side up 3'± and updated ties.

August 16, 1976 - Found Cast Iron Monument and updated ties.

July 29, 1980 - Found Cast Iron Monument and updated ties.

May 26, 1983 - Found Cast Iron Monument and updated ties.

July 22, 1986 - Found Cast Iron Monument and updated ties.

November 7, 1991 - Replaced Cast Iron Monument. Sign and post on the east side. Updated ties.

June 10, 1992 - Found Cast Iron Monument and updated ties.

June 18, 1996 - Found Cast Iron Monument and updated ties.

February 23, 1998 - Found Cast Iron Monument with sign and post on the east side. Established NAD 1983 (1996 Adjustment) Anoka County Project Coordinates by Static GPS methods. Updated ties.

July 7, 2010 - Found Cast Iron Monument down 0.5'± with a sign and post on the east side. Updated ties.

September 27, 2016 - Found Cast Iron Monument down 0.5'± with a sign and post on the east side. Verified location of corner by VRS GPS methods. Updated ties.