

CERTIFICATE OF LOCATION OF GOVERNMENT CORNER

County of Anoka

State of Minnesota

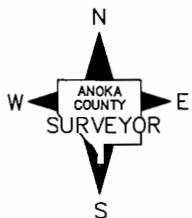
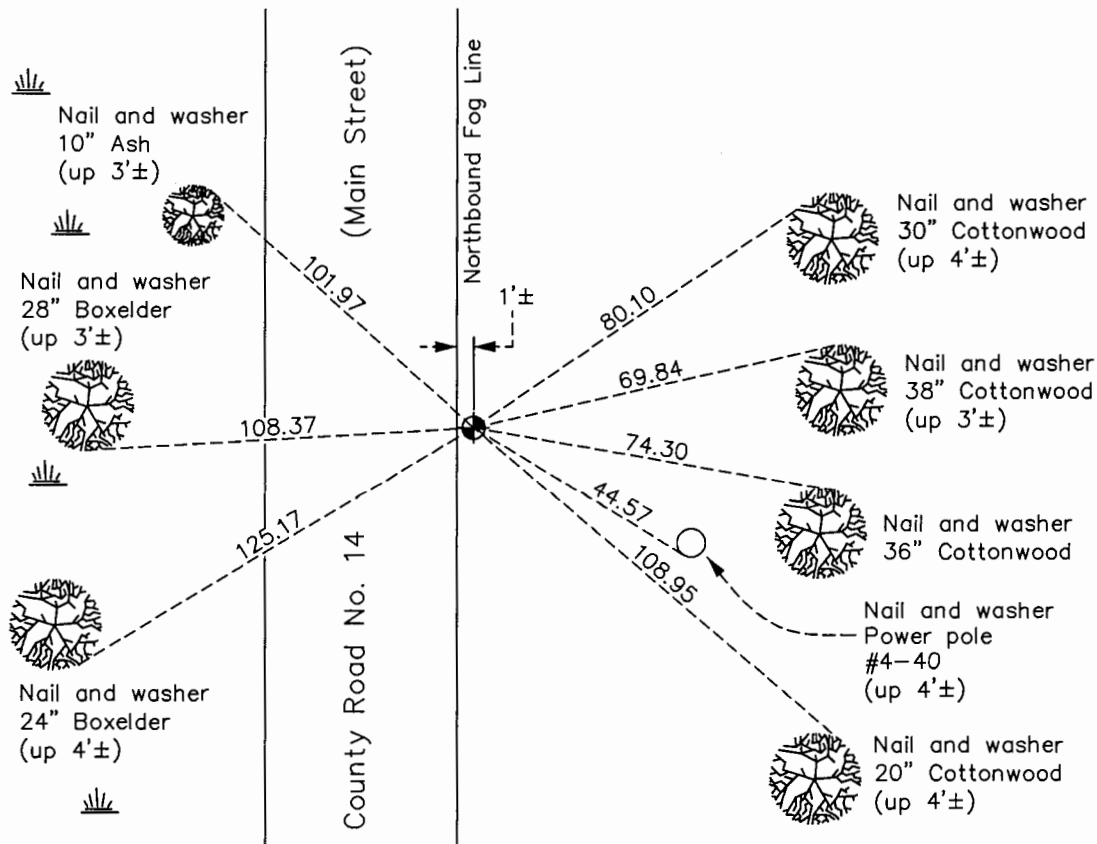
South $\frac{1}{4}$ Corner of Sec. 10 Township 31 Range 22

On the 13th day of May, 1963, the described corner was evidenced by a $\frac{3}{4}$ " iron
pipe

and to perpetuate the location of said corner, at the exact location thereof, a permanent marker
 was placed consisting of a cast iron monument

AND on the 10th day of January, 2017, said permanent marker was found and the ties
were updated. Monument is 1'± East of northbound fog line.

Updated reference ties are as shown below.



N.A.D. 1983 Coordinates
(1996 Adjustment)

County Project Coordinates	
Northing	153592.8339
Easting	550322.3013
Date	2/06/98

Revision Date
5/8/17

I hereby certify that this United States public land survey monument record is correct and complete to the best of my knowledge and belief.

Larry D. Hoium Date 6/30/17

Larry D. Hoium, Anoka County Surveyor

Minnesota License Number 18165

HISTORY OF GOVERNMENT CORNER

Page No. 49

County of Anoka

State of Minnesota

South 1/4 Corner of Sec. 10 Township 31 Range 22

CORNER HISTORY:

September 22, 1943 - Cartwright found Concrete Monument. Established ties to monument.

May 13, 1963 - Found 3/4" Iron Pipe and bolt down 1/2". Concrete Monument was not found. Set Cast Iron Monument flush with the surface and updated ties.

June 16, 1965 - Found Cast Iron Monument and set P.K. nails 2.00' north and east. Updated ties.

August 6, 1969 - Found Cast Iron Monument and updated ties.

July 18, 1973 - Found Cast Iron Monument and updated ties.

October 15, 1975 - Raised Cast Iron Monument and updated ties.

August 18, 1976 - Found Cast Iron Monument and updated ties.

August 27, 1984 - Raised Cast Iron Monument and updated ties.

July 3, 1986 - Found Cast Iron Monument and updated ties.

June 28, 1991 - Found Cast Iron Monument and updated ties.

June 14, 1996 - Found Cast Iron Monument and updated ties. Set P.K. nails 2.00' east and west of monument.

February 6, 1998 - Found Cast Iron Monument and established NAD 1983 (1996 Adjustment) Anoka County Project Coordinates by Static GPS methods. Updated ties.

July 14, 2010 - Set construction ties and removed Cast Iron Monument prior to road construction.

August 16, 2010 - Reset Cast Iron Monument after road construction. Monument is 1'± East of northbound fog line. Verified location of corner by Static GPS methods and updated ties.

January 10, 2017 - Found Cast Iron Monument and updated ties. Verified location of corner by VRS GPS methods.