

# CERTIFICATE OF LOCATION OF GOVERNMENT CORNER

County of Anoka

State of Minnesota

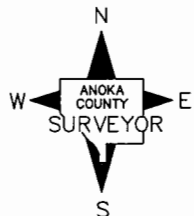
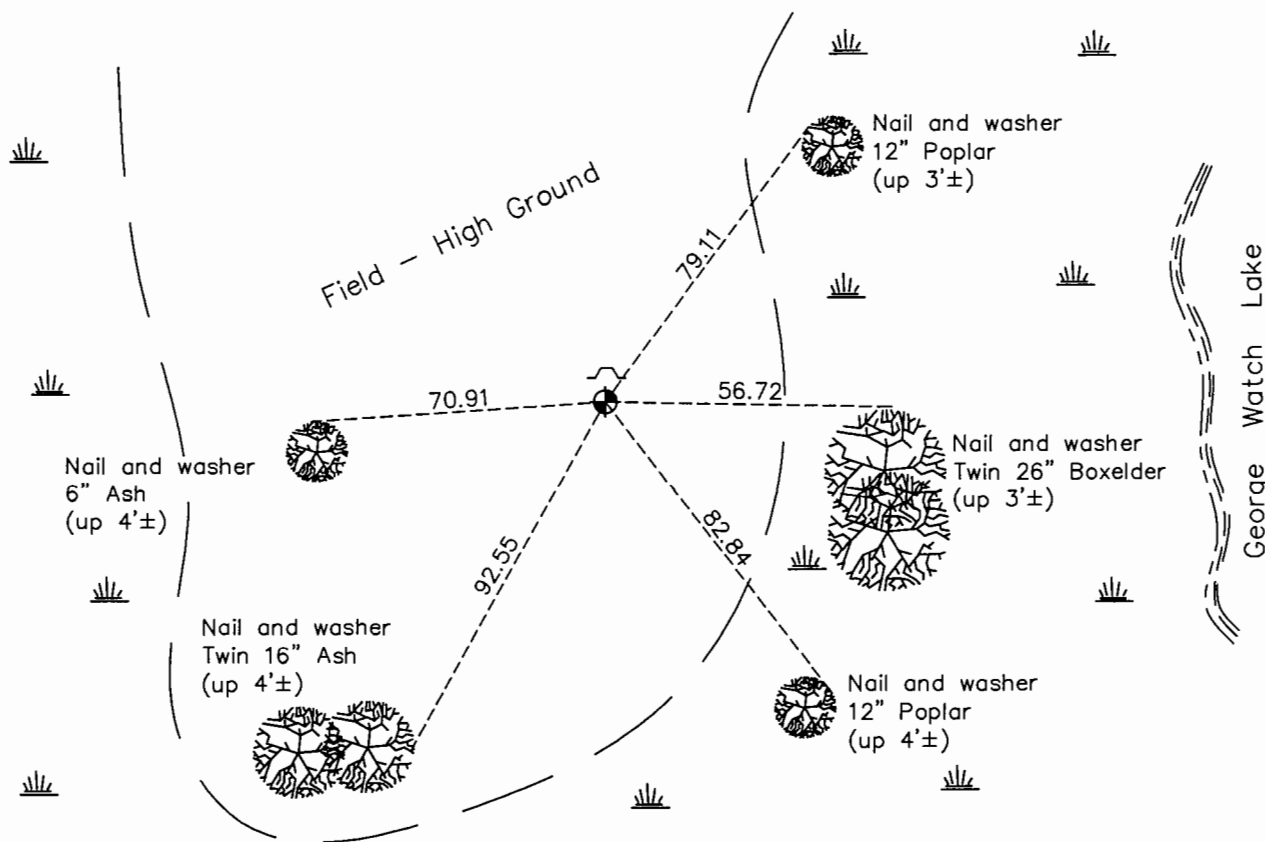
Witness Corner of Sec. 9 Township 31 Range 22  
 (on south line of section and west side of lake)

On the 19th day of February, 1986, the described corner was evidenced by area resurvey

and to perpetuate the location of said corner, at the exact location thereof, a permanent marker was placed consisting of a cast iron monument with a sign and post on the north side

AND on the 31st day of January, 2017, said permanent marker was found down 0.4'± and the ties were updated. Monument is 1/4 ± mile south of I35W.

Updated reference ties are as shown below.



Revision Date  
**5/11/17**

N.A.D. 1983 Coordinates  
 (1996 Adjustment)

County Project Coordinates	
Northing	<u>153573.6233</u>
Easting	<u>544182.3466</u>
Date	<u>2/09/98</u>

I hereby certify that this United States public land survey monument record is correct and complete to the best of my knowledge and belief.  
*Larry D. Hoium* Date 6/30/17  
 Larry D. Hoium, Anoka County Surveyor  
 Minnesota License Number 18165

# HISTORY OF GOVERNMENT CORNER

Page No. 53A

County of Anoka

State of Minnesota

Witness Corner of Sec. 9 Township 31 Range 22  
(on south line of section and west side of lake)

## **CORNER HISTORY:**

February 19, 1986 - Set 1/2" Iron Pipe using area resurvey and a sign and post on the north side. Established ties to iron pipe.

July 13, 1986 - Found Cast Iron Monument (date set unknown) with sign and post on the north side and updated ties.

July 19, 1988 - Found Cast Iron Monument and updated ties.

February 9, 1998 - Found Cast Iron Monument with sign and post on the north side and established NAD 1983 (1996 Adjustment) Anoka County Project Coordinates by Static GPS methods. Updated ties.

September 21, 2010 - Found Cast Iron Monument down 0.4'± and updated ties. Monument is approximately 1/4 mile south of I35W.

January 31, 2017- Found Cast Iron Monument with sign and post on the north side and updated ties.