

CERTIFICATE OF LOCATION OF GOVERNMENT CORNER

County of Anoka

State of Minnesota

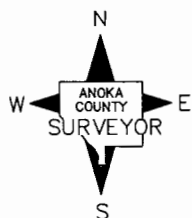
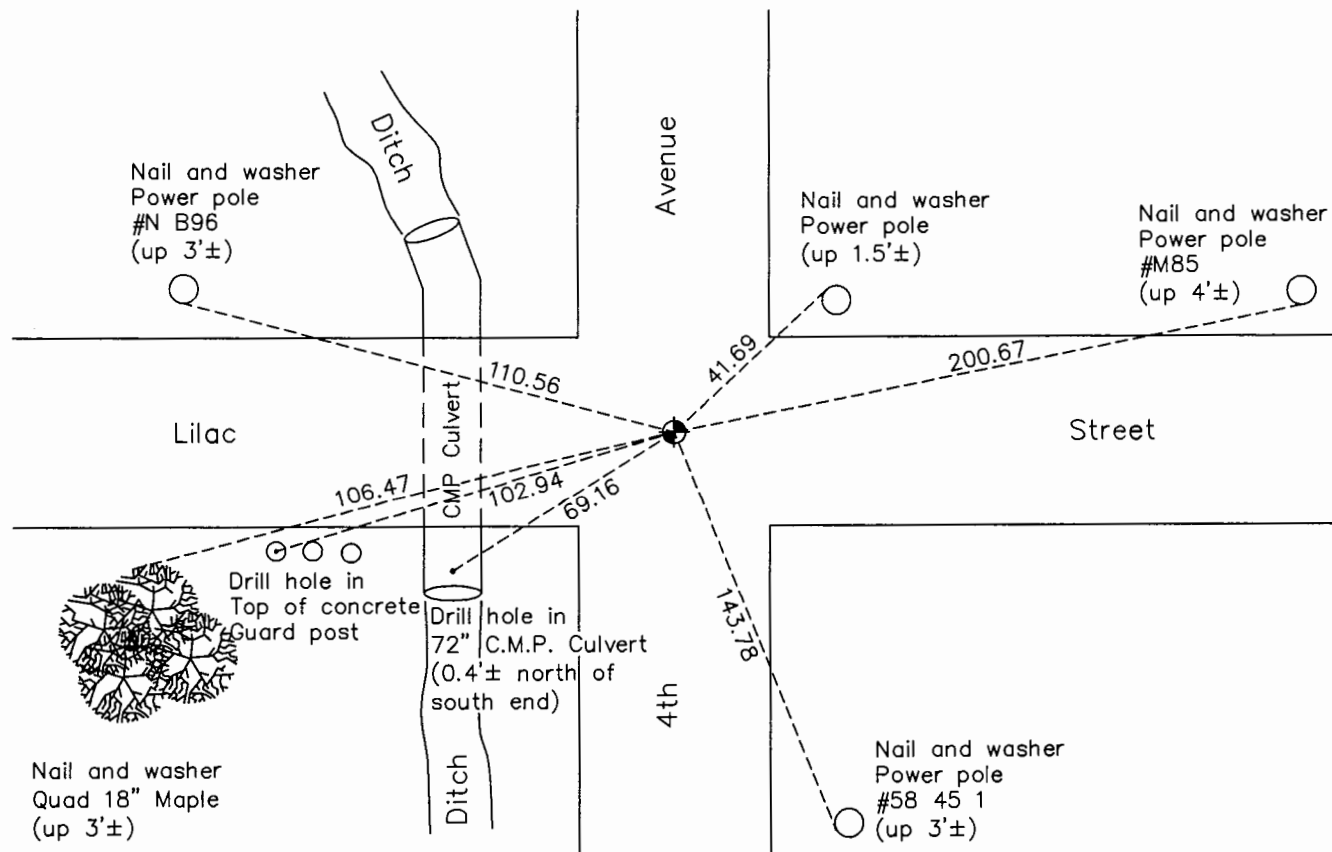
Northeast Corner of Sec. 18 Township 31 Range 22

On the 28th day of February, 1963, the described corner was evidenced by a 4"X4"
concrete monument

and to perpetuate the location of said corner, at the exact location thereof, a permanent marker
was placed consisting of a cast iron monument

AND on the 27th day of October, 2016, said permanent marker was found flush with the
surface and the ties were updated.

Updated reference ties are as shown below.



Revision Date

1/24/17

N.A.D. 1983 Coordinates
(1996 Adjustment)

County Project Coordinates	
Northing	<u>153631.4434</u>
Easting	<u>537165.4893</u>
Date	<u>1/26/96</u>

I hereby certify that this United States public land survey monument record is correct and complete to the best of my knowledge and belief.

Date 6/28/17
 Larry D. Hoium, Anoka County Surveyor
 Minnesota License Number 18165

HISTORY OF GOVERNMENT CORNER

County of Anoka

State of Minnesota

Northeast Corner of Sec. 18 Township 31 Range 22

CORNER HISTORY:

Date Unknown - Found 4" Concrete Monument down 0.5'±. Established ties to monument.

February 20, 1958 - G. Hopkins found 4" Concrete Monument down 0.8'± with Iron Pipe on top of concrete monument. Updated ties.

March 19, 1962 - Found 4" square Concrete Monument down 20" with top broken off. Set 3/4" Iron Pipe on top of the Concrete Monument and updated ties.

February 28, 1963 - Found 4" X 4" Concrete Monument down 3'± with top broken off and Iron Pipe on top of concrete monument. Updated ties prior to road construction.

May 5, 1963 - Set Cast Iron Monument flush with the surface over concrete monument and updated ties.

June 14, 1965 - Found Cast Iron Monument and updated ties.

August 14, 1969 - Found Cast Iron Monument and set P.K. Nails 2.00' north and east. Updated ties.

June 15, 1973 - Found Cast Iron Monument and updated ties.

May 17, 1977 - Found Cast Iron Monument and updated ties.

June 8, 1980 - Found Cast Iron Monument and updated ties.

November 5, 1990 - Found Cast Iron Monument and updated ties.

August 29, 1991 - Found Cast Iron Monument and updated ties.

December 26, 1996 - Found Cast Iron Monument and updated ties.

January 26, 1996 - Found cast iron monument and established NAD 1983 (1996 Adjustment) Anoka County Project Coordinates by Static GPS methods. Updated ties.

June 15, 2010 - Found Cast Iron Monument and updated ties.

July 11, 2012 - Set construction ties and removed cast iron monument prior to road construction. Verified location of corner by VRS GPS methods.

August 16, 2013 - Replaced Cast Iron Monument after road construction using construction ties. Verified location of corner by VRS GPS methods. Updated ties.

October 27, 2016 - Found Cast Iron Monument flush with the surface. Verified location of corner by VRS GPS methods and updated ties.