

CERTIFICATE OF LOCATION OF GOVERNMENT CORNER

County of Anoka

State of Minnesota

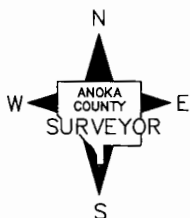
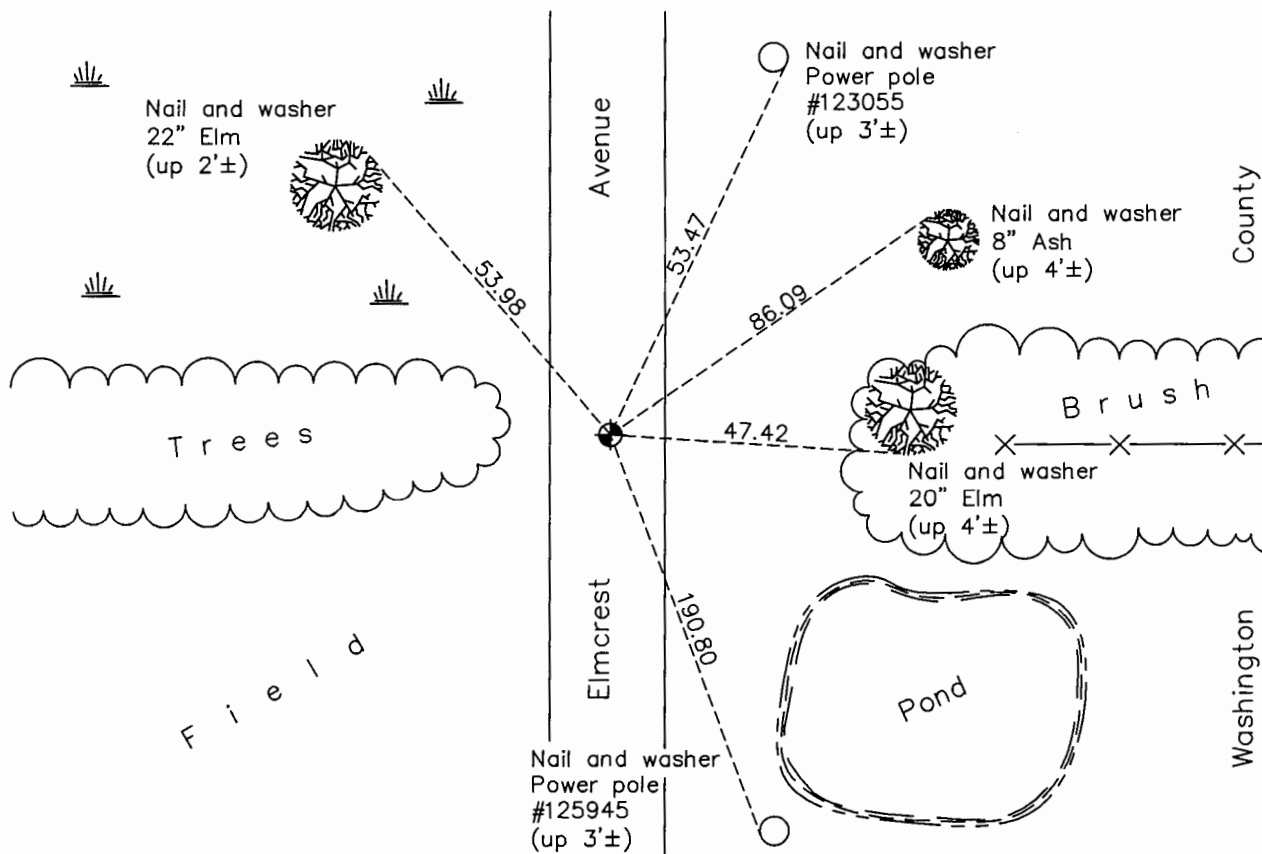
Southeast Corner of Sec. 13 Township 31 Range 22

On the 13th day of August, 1964, the described corner was evidenced by a 3/4" iron pipe

and to perpetuate the location of said corner, at the exact location thereof, a permanent marker was placed consisting of a cast iron monument down 1'±

AND on the 30th day of December, 2016, said permanent marker was found and the ties were updated. The monument is a Washington County cast iron monument flush with the surface.

Updated reference ties are as shown below.



Revision Date
1/27/17

N.A.D. 1983 Coordinates
(1996 Adjustment)

County Project Coordinates	
Northing	148383.8201
Easting	563554.1265
Date	3/30/98

I hereby certify that this United States public land survey monument record is correct and complete to the best of my knowledge and belief.

Larry D. Hoium Date 6/28/17

Larry D. Hoium, Anoka County Surveyor
Minnesota License Number 18165

HISTORY OF GOVERNMENT CORNER

Page No. 67

County of Anoka

State of Minnesota

Southeast Corner of Sec. 13 Township 31 Range 22

CORNER HISTORY:

August 13, 1964 - Found 3/4" Pinched Iron Pipe flush with the surface in center line of dirt road. Established ties to monument.

July 7, 1965 - Found Iron Pipe and updated ties.

August 5, 1969 - Replaced Iron Pipe with Cast Iron Monument down 0.4'± and updated ties.

June 21, 1973 - Found Cast Iron Monument and updated ties.

May 20, 1977 - Found Cast Iron Monument and updated ties.

October 18, 1991 - Found Cast Iron Monument and updated ties.

June 28, 1996 - Found Cast Iron Monument and updated ties.

March 30, 1998 - Found Cast Iron Monument and established NAD 1983 (1996 Adjustment) Anoka County Project Coordinates by Static GPS methods. Updated ties.

July 23, 2010 - Found Cast Iron Monument and updated ties. The monument is a Washington County cast iron monument flush with the surface.

December 30, 2016 - Found Cast Iron Monument and updated ties. The monument is a Washington County cast iron monument flush with the surface.