

# CERTIFICATE OF LOCATION OF GOVERNMENT CORNER

County of Anoka

State of Minnesota

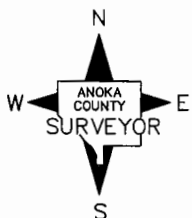
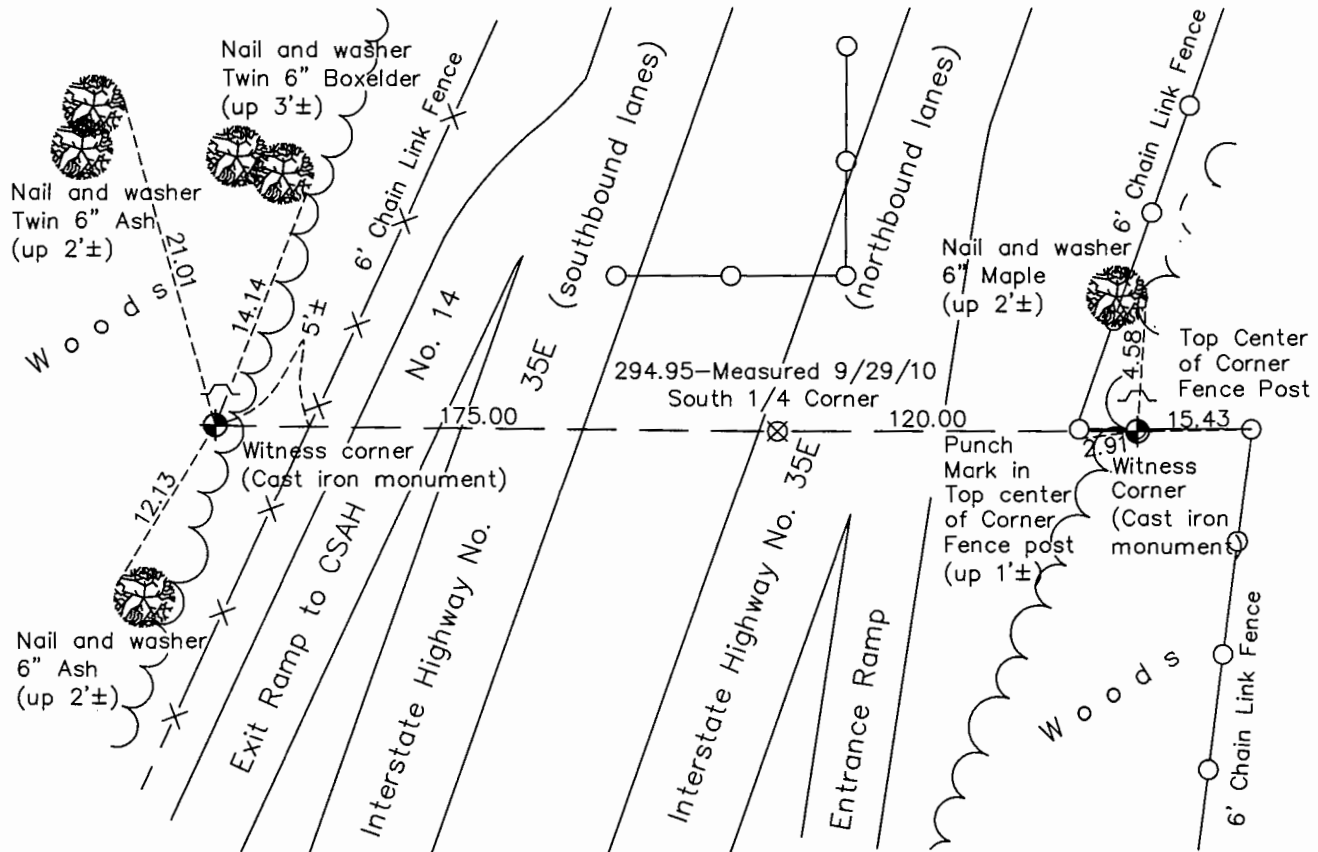
## South 1/4 Corner of Sec. 13 Township 31 Range 22

On the 23rd day of September, 1975, the described corner was evidenced by area resurvey

and to perpetuate the location of said corner, at the exact location thereof, a permanent marker was placed consisting of a 1" iron pipe at the South 1/4 corner with a cast iron monument at each witness corner with a sign and post on the north side of each witness monument

AND on the 26th day of January, 2017, said permanent marker was not found. Location in northbound lane. Witness corner ties were updated. Easterly witness corner is under fence line.

Updated reference ties are as shown below.



Revision Date  
5/15/17

N.A.D. 1983 Coordinates  
(1996 Adjustment)

County Project Coordinates	
Northing	<u>148335.2918</u>
Easting	<u>560886.6326</u>
Date	<u>3/26/98</u>

I hereby certify that this United States public land survey monument record is correct and complete to the best of my knowledge and belief.

*Larry D. Hoium* Date 8/30/17  
 \_\_\_\_\_  
 Larry D. Hoium, Anoka County Surveyor  
 Minnesota License Number 18165

# HISTORY OF GOVERNMENT CORNER

Page No. 68

County of Anoka

State of Minnesota

South 1/4 Corner of Sec. 13 Township 31 Range 22

## **CORNER HISTORY:**

September 23, 1975 - Set 1" Iron Pipe at location of South 1/4 corner using area resurvey with Cast Iron Monuments set flush with the surface east and west of South 1/4 as witness corners. Set sign and post on the north side of both witness corners. P.K. nails were set 2.00' north and east of South 1/4 corner.

May 17, 1977 - Found witness corner Cast Iron Monuments and updated ties.

July 28, 1980 - Found witness corner Cast Iron Monuments and updated ties.

October 23, 1991 - Found witness corner Cast Iron Monuments with signs and posts on the north side and updated ties.

July 15, 1996 - Found witness corner Cast Iron Monuments and updated ties.

March 26, 1998 - Found Iron Pipe at location of South 1/4 corner and witness corner Cast Iron Monuments with signs and posts on the north side of witness corners. Established NAD 1983 (1996 Adjustment) Anoka County Project Coordinates by Static GPS methods on South 1/4 corner. Updated ties.

September 29, 2010 - South 1/4 corner was not found. Location is in northbound lane - widened for CSAH No. 14 construction. Found witness corner Cast Iron Monuments and updated ties.

January 26, 2017 - Found witness corner Cast Iron Monuments and updated ties.