

CERTIFICATE OF LOCATION OF GOVERNMENT CORNER

County of Anoka

State of Minnesota

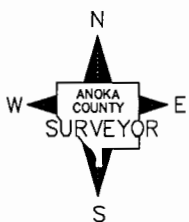
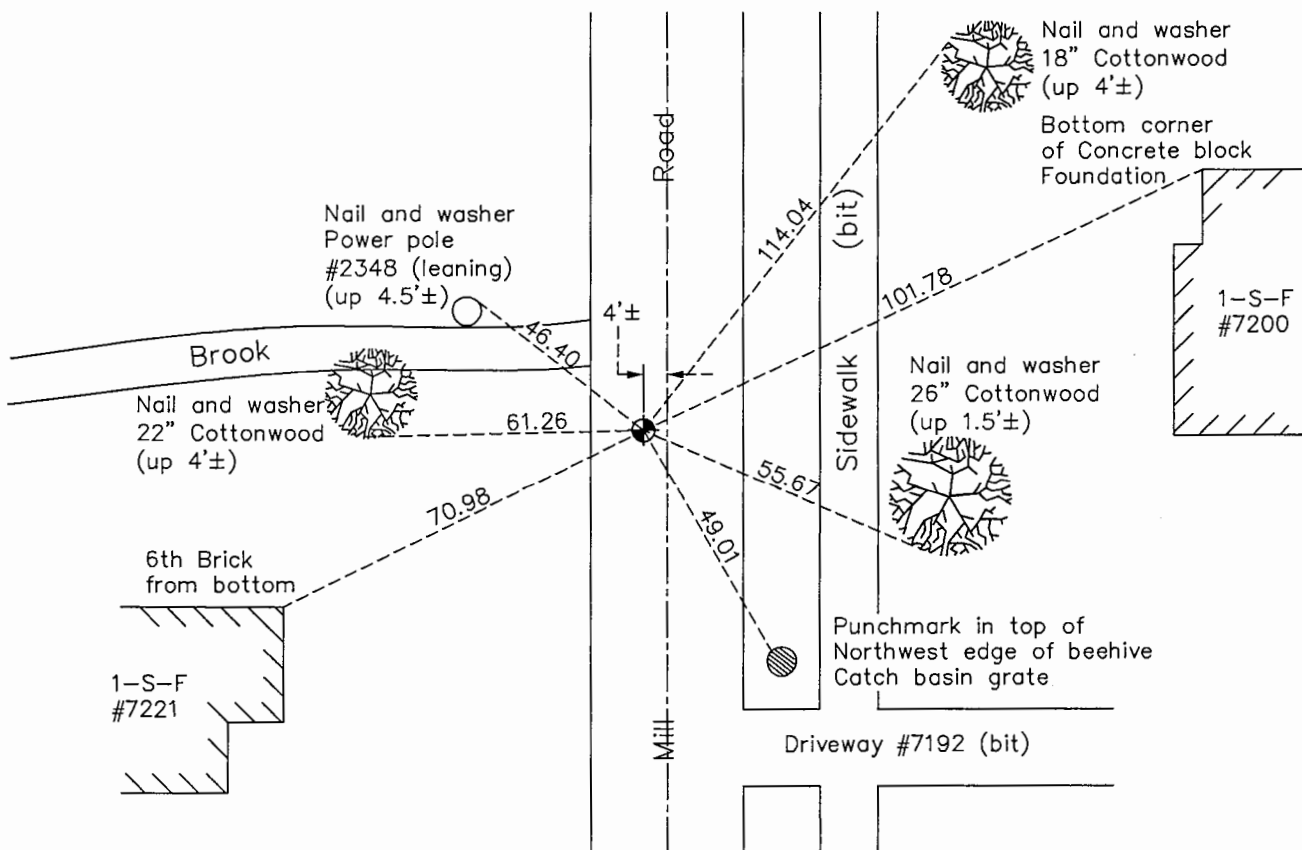
South $\frac{1}{4}$ Corner of Sec. 14 Township 31 Range 22

On the 23rd day of March, 1962, the described corner was evidenced by a concrete monument

and to perpetuate the location of said corner, at the exact location thereof, a permanent marker was placed consisting of a cast iron monument

AND on the 13th day of October, 2016, said permanent marker was found and the ties were updated

Updated reference ties are as shown below.



N.A.D. 1983 Coordinates
(1996 Adjustment)

County Project Coordinates	
Northing	<u>148299.1407</u>
Easting	<u>555610.1240</u>
Date	<u>2/25/98</u>

Revision Date
1/27/17

I hereby certify that this United States public land survey monument record is correct and complete to the best of my knowledge and belief.

Larry D. Hoium Date 6/28/17

Larry D. Hoium, Anoka County Surveyor

Minnesota License Number 18165

HISTORY OF GOVERNMENT CORNER

County of Anoka

State of Minnesota

South 1/4 Corner of Sec. 14 Township 31 Range 22

CORNER HISTORY:

October 9, 1945 - Cartwright found Concrete Monument down 0.5'±. Established ties to monument.

December 21, 1959 - Milner W. Carley found Concrete Monument and set iron pipe near monument. Updated ties.

March 23, 1962 - Found Concrete Monument with top broken off down 0.5'± and 3/4" Iron Pipe on the south side of Monument. Updated ties.

January 6, 1964 - Found Concrete Monument with top broken off down 0.5'± and iron pipe on south side of monument. Added and updated ties to monument because of ditch construction.

July 9, 1965 - Found Concrete Monument and updated ties.

August 5, 1969 - Found Concrete Monument down 1.5'±. Set Cast Iron Monument down 0.4'± on top of Concrete Monument and updated ties.

June 18, 1973 - Found Cast Iron Monument and updated ties.

August 18, 1976 - Found Cast Iron Monument and updated ties.

May 25, 1978 - Replaced Cast Iron Monument after road construction and updated ties.

April 25, 1980 - Raised Cast Iron Monument to flush with the surface after road construction and set P.K. nails 2.00' north and east. Updated ties.

July 30, 1980 - Found Cast Iron Monument and updated ties.

October 7, 1986 - Found Cast Iron Monument and updated ties.

August 30, 1991 - Found Cast Iron Monument and updated ties.

June 18, 1996 - Found Cast Iron Monument and updated ties.

February 25, 1998 - Found Cast Iron Monument and established NAD 1983 (1996 Adjustment) Anoka County Project Coordinates by Static GPS methods. Updated ties.

July, 2010 - Found Cast Iron Monument and updated ties.

October 13, 2016 - Found Cast Iron Monument and updated ties. Verified location of corner by VRS GPS methods.