

# CERTIFICATE OF LOCATION OF GOVERNMENT CORNER

County of Anoka

State of Minnesota

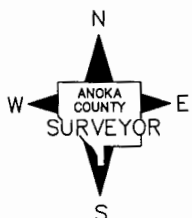
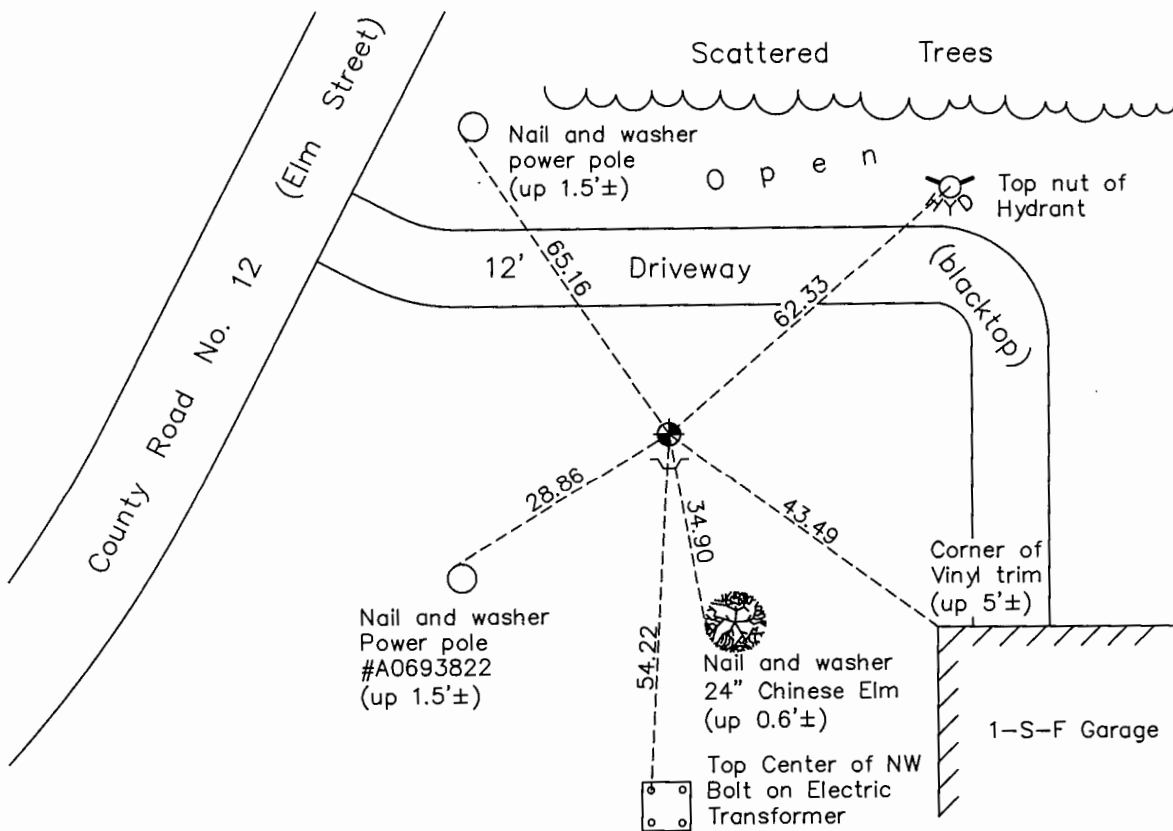
## Northeast Corner of Sec. 19 Township 31 Range 22

On the 6th day of April, 1962, the described corner was evidenced by a 1" pinched iron pipe

and to perpetuate the location of said corner, at the exact location thereof, a permanent marker was placed consisting of a cast iron monument with a sign and post on the south side

AND on the 14th day of November, 2016, said permanent marker was found down 0.4'± and the ties were updated

Updated reference ties are as shown below.



Revision Date

1/30/17

N.A.D. 1983 Coordinates  
(1996 Adjustment)

County Project Coordinates	
Northing	148299.4570
Easting	537188.0459
Date	7/29/97

I hereby certify that this United States public land survey monument record is correct and complete to the best of my knowledge and belief.

*Larry D. Hoium* Date 6/28/17

Larry D. Hoium, Anoka County Surveyor

Minnesota License Number 18165

# HISTORY OF GOVERNMENT CORNER

Page No. 80

County of Anoka

State of Minnesota

## Northeast Corner of Sec. 19 Township 31 Range 22

### **CORNER HISTORY:**

Date unknown - M.S.H.D found 1" Pinched Iron Pipe flush with the surface. Established ties to monument.

March 19, 1958 - Minnesota Highway Department found Iron Pipe flush with the surface and updated ties.

April 6, 1962 - Found 1" Pinched Iron Pipe flush with the surface and updated ties.

June 14, 1965 - Found 1" Pinched Iron Pipe and updated ties.

August 15, 1969 - Replaced 1" Pinched Iron Pipe with a Cast Iron Monument set flush with the surface. Monument is 1'± south of east-west centerline and 2'± west of north-south centerline. Set P.K. Nails 2.00' north and east of monument. Updated ties.

June 19, 1973 - Found Cast Iron Monument and updated ties.

May 23, 1977 - Found Cast Iron Monument and updated ties.

August 7, 1980 - Found Cast Iron Monument and updated ties.

September 30, 1991 - Found Cast Iron Monument and updated ties.

April 9, 1993 - Replaced Cast Iron Monument flush with the surface after road construction and updated ties.

July 29, 1997 - Replaced Cast Iron Monument after road construction and set a sign and post on the south side. Established NAD 1983 ( 1996 Adjustment) Anoka County Project Coordinates by Static GPS methods and updated ties.

July 26, 2010 - Found Cast Iron Monument down 0.4'± with a sign and post on the south side and updated ties.

November 14, 2016 - Found Cast Iron Monument down 0.4'± with a sign and post on the south side. Verified location of corner by VRS GPS methods. Updated ties.