

CERTIFICATE OF LOCATION OF GOVERNMENT CORNER

County of Anoka

State of Minnesota

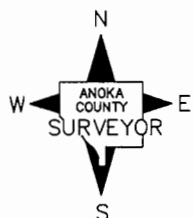
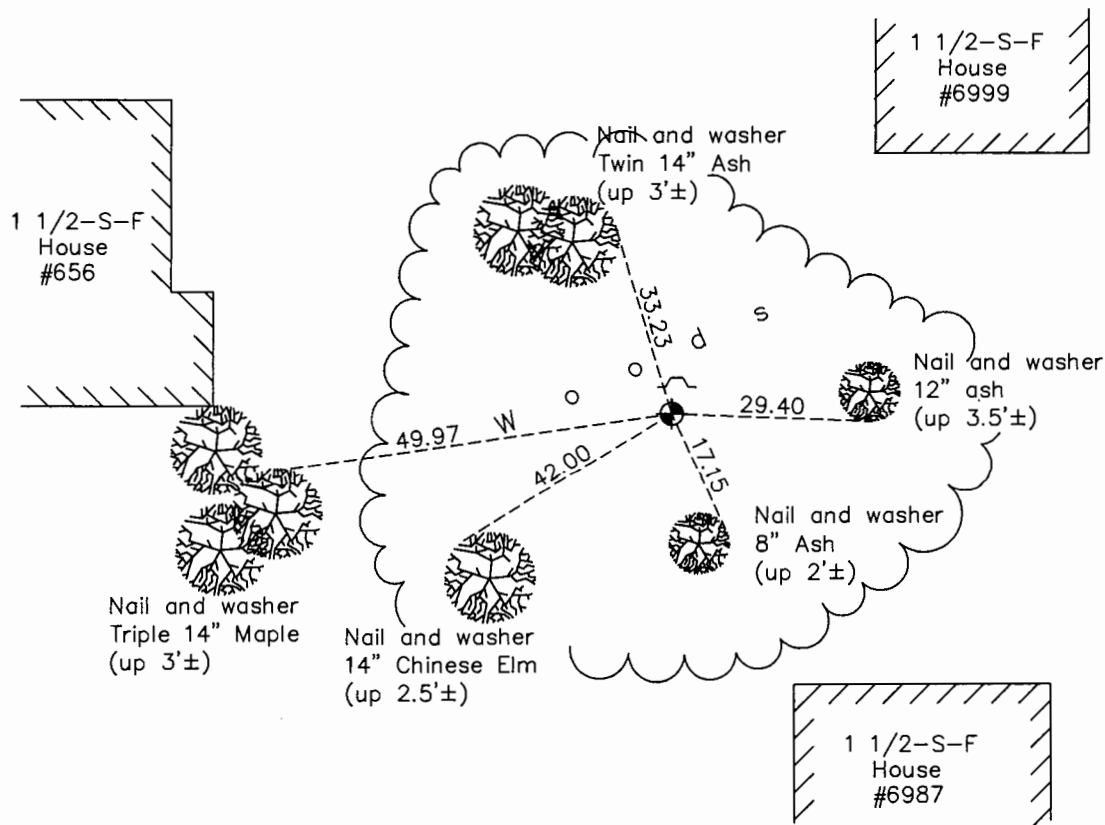
West 1/4 Corner of Sec. 21 Township 31 Range 22

On the 18th day of March, 1968, the described corner was evidenced by area resurvey

and to perpetuate the location of said corner, at the exact location thereof, a permanent marker was placed consisting of a cast iron monument with a sign and post on the north side

AND on the 17th day of November, 2016, said permanent marker was found down 0.1'± and the ties were updated

Updated reference ties are as shown below.



Revision Date

1/31/17

N.A.D. 1983 Coordinates
(1996 Adjustment)

County Project Coordinates	
Northing	<u>145646.0693</u>
Easting	<u>542469.7489</u>
Date	<u>3/17/98</u>

I hereby certify that this United States public land survey monument record is correct and complete to the best of my knowledge and belief.

Larry D. Hoium Date 6/28/17

Larry D. Hoium, Anoka County Surveyor

Minnesota License Number 18165

HISTORY OF GOVERNMENT CORNER

County of Anoka

State of Minnesota

West 1/4 Corner of Sec. 21 Township 31 Range 22

CORNER HISTORY:

March 18, 1968 - Set Bridge Spike using area resurvey. Established ties to monument.

August 18, 1969 - Found Bridge Spike and updated ties.

June 28, 1973 - Bridge Spike could not be found.

September 12, 1973 - Replaced found Iron Pipe (date set unknown) with a Cast Iron Monument and updated ties.

May 24, 1977 - Cast Iron Monument could not be found.

June 15, 1983 - Replaced found Iron Pipe with a Cast Iron Monument and verified location using remaining tie and area resurvey. Set sign and post on the north side. Established ties to monument.

July 28, 1986 - Found Cast Iron Monument and updated ties.

October 25, 1991 - Found Cast Iron Monument and updated ties.

March 17, 1998 - Found Cast Iron Monument and established NAD 1983 (1996 Adjustment) Anoka County Project Coordinates by Static GPS methods. Updated ties.

August 18, 2010 - Found Cast Iron Monument down $0.1' \pm$ with sign and post on the north side. Updated ties.

November 17, 2016 - Found Cast Iron Monument down $0.1' \pm$ with sign and post on the north side. Updated ties.