

CERTIFICATE OF LOCATION OF GOVERNMENT CORNER

County of Anoka

State of Minnesota

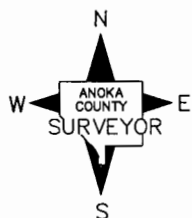
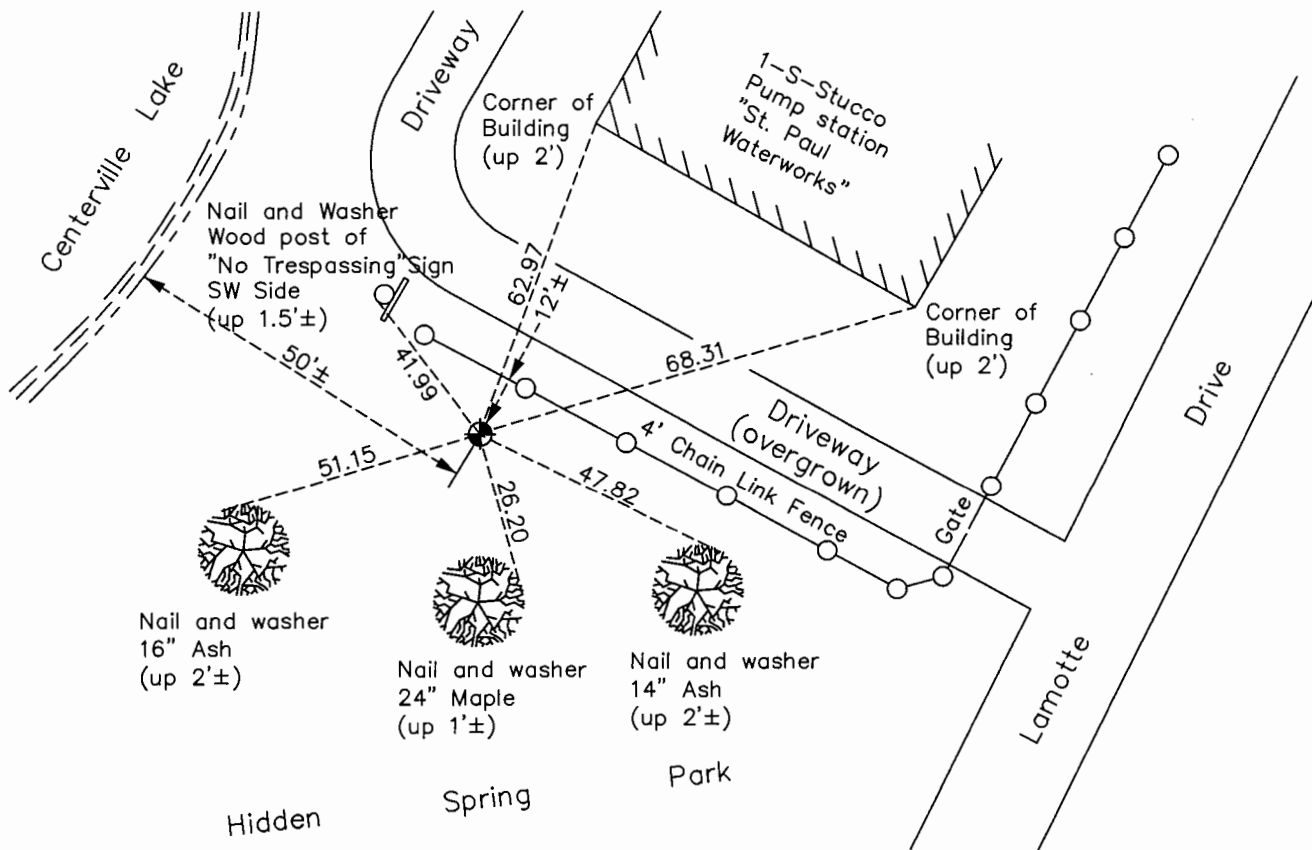
West 1/4 Corner of Sec. 23 Township 31 Range 22

On the 15th day of May, 1963, the described corner was evidenced by a Ramsey County granite monument

and to perpetuate the location of said corner, at the exact location thereof, a permanent marker was placed consisting of a cast iron monument on top of granite monument

AND on the 9th day of December, 2016, said permanent marker was found flush with the surface and the ties were updated.

Updated reference ties are as shown below.



N.A.D. 1983 Coordinates
(1996 Adjustment)

County Project Coordinates	
Northing	145688.5368
Easting	552992.0843
Date	4/02/98

Revision Date

1/31/17

I hereby certify that this United States public land survey monument record is correct and complete to the best of my knowledge and belief.

Larry D. Hoium Date 4/28/17

Larry D. Hoium, Anoka County Surveyor
Minnesota License Number 18165

HISTORY OF GOVERNMENT CORNER

Page No. 89

County of Anoka

State of Minnesota

West 1/4 Corner of Sec. 23 Township 31 Range 22

CORNER HISTORY:

April 20, 1948 - Cartwright found Concrete Monument. Established ties to monument.

May 14, 1963 - Found 1 1/2" Iron Pipe. Will verify location at a later date.

May 15, 1963 - Found Ramsey County Granite Monument with drill hole in center. Location checks with monuments marking corners of St. Paul Waterworks Department property. Set Cast Iron Monument over granite . Lowered 1 1/2" Iron Pipe found 0.26' west and 1.35' north of monument. Updated ties.

July 9, 1965 - Found Cast Iron Monument and updated ties.

September 5, 1969 - Found Cast Iron Monument and updated ties.

July 9, 1973 - Found Cast Iron Monument and updated ties.

May 24, 1977 - Found Cast Iron Monument and updated ties.

July 31, 1980 - Found Cast Iron Monument and updated ties.

July 24, 1986 - Found Cast Iron Monument and updated ties.

October 28, 1991 - Found Cast Iron Monument and updated ties.

July 10, 1996 - Found Cast Iron Monument and updated ties.

April 2, 1998 - Replaced Cast Iron Monument and set steel post on the south side. Established NAD 1983 (1996 Adjustment) Anoka County Project Coordinates by Static GPS methods and updated ties.

August 2010 - Found Cast Iron Monument flush with the surface. Sign and post was not found. Updated ties.

December 9, 2016 - Found Cast Iron Monument flush with the surface. Verified location of corner by VRS GPS methods and updated ties.