

CERTIFICATE OF LOCATION OF GOVERNMENT CORNER

County of Anoka

State of Minnesota

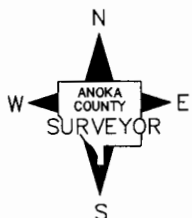
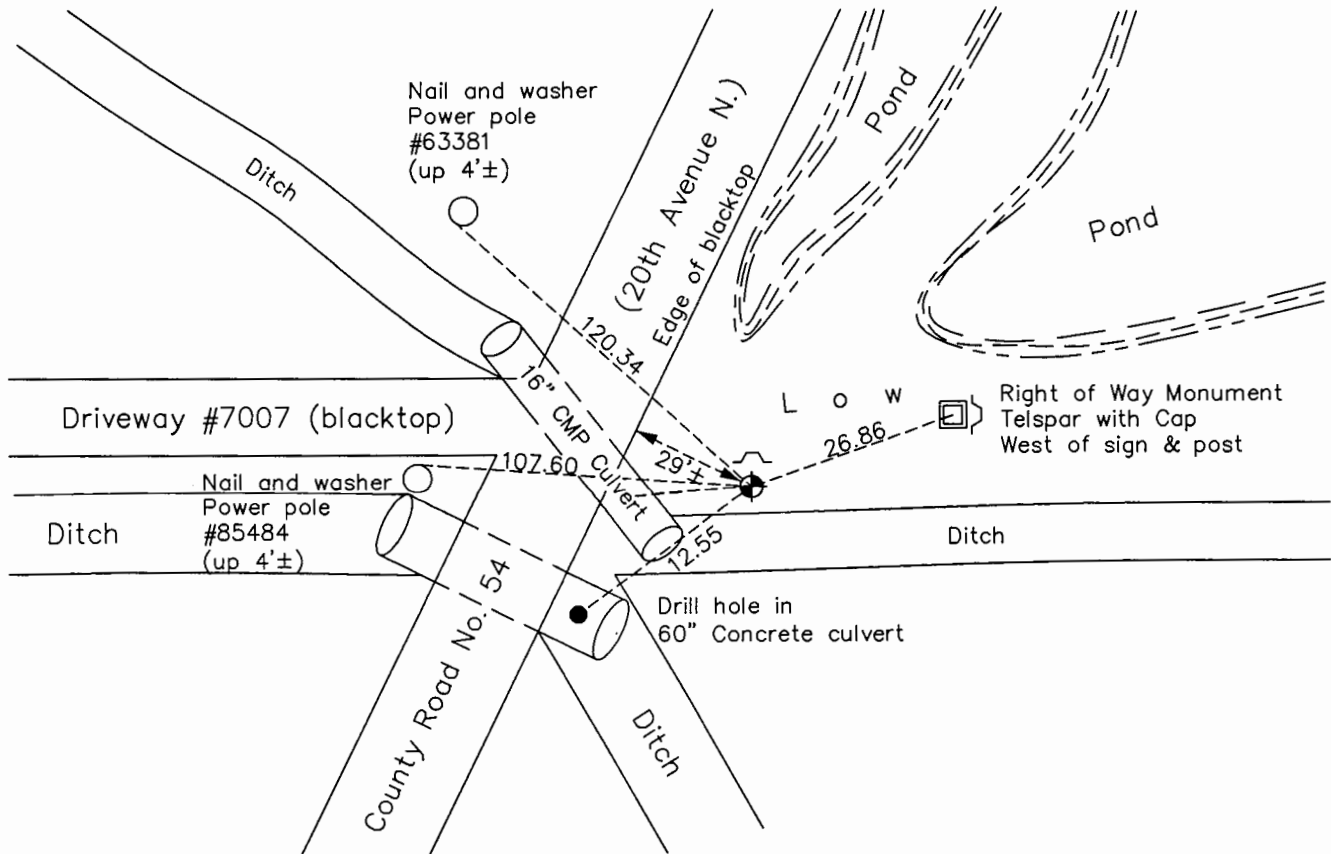
East 1/4 Corner of Sec. 23 Township 31 Range 22

On the 26th day of September, 1972, the described corner was evidenced by a concrete monument

and to perpetuate the location of said corner, at the exact location thereof, a permanent marker was placed consisting of a cast iron monument with a sign and post on the north side

AND on the 3rd day of January, 2017, said permanent marker was found down 0.1'± with a sign and post on the north side and the ties were updated.

Updated reference ties are as shown below.



Revision Date

1/31/17

N.A.D. 1983 Coordinates
(1996 Adjustment)

County Project Coordinates	
Northing	145644.2390
Easting	558271.9383
Date	2/03/98

I hereby certify that this United States public land survey monument record is correct and complete to the best of my knowledge and belief.

Larry D. Hoium Date 6/28/17

Larry D. Hoium, Anoka County Surveyor

Minnesota License Number 18165

HISTORY OF GOVERNMENT CORNER

Page No. 90

County of Anoka

State of Minnesota

East 1/4 Corner of Sec. 23 Township 31 Range 22

CORNER HISTORY:

April 20, 1948 - Cartwright found Concrete Monument up 0.7'±. Established ties to monument.

October 1959 - Found Concrete Monument and updated ties.

September 5, 1969 - Found Concrete Monument up 0.4'± and updated ties.

September 26, 1972 - Found Concrete Monument and steel post. Updated ties.

August 18, 1976 - Replaced Concrete Monument with a Cast Iron Monument. Steel post on the east side and updated ties.

August 30, 1991 - Found Cast Iron Monument and updated ties.

September 9, 1994 - Set construction ties and removed Cast Iron Monument prior to road construction.

October 26, 1994 - Set Cast Iron Monument after ditch construction using construction ties and updated ties. Set a sign and post on the north side of monument.

June 24, 1996 - Found Cast Iron Monument and updated ties.

February 3, 1998 - Found Cast Iron Monument and established NAD 1983 (1996 Adjustment) Anoka County Project Coordinates by Static GPS methods. Updated ties.

September 16, 2010 - Found Cast Iron Monument down 0.1'± with a sign and post on the north side. Updated ties.

January 3, 2017 - Found Cast Iron Monument down 0.1'± with a sign and post on the north side. Updated ties.