

CERTIFICATE OF LOCATION OF GOVERNMENT CORNER

County of Anoka

State of Minnesota

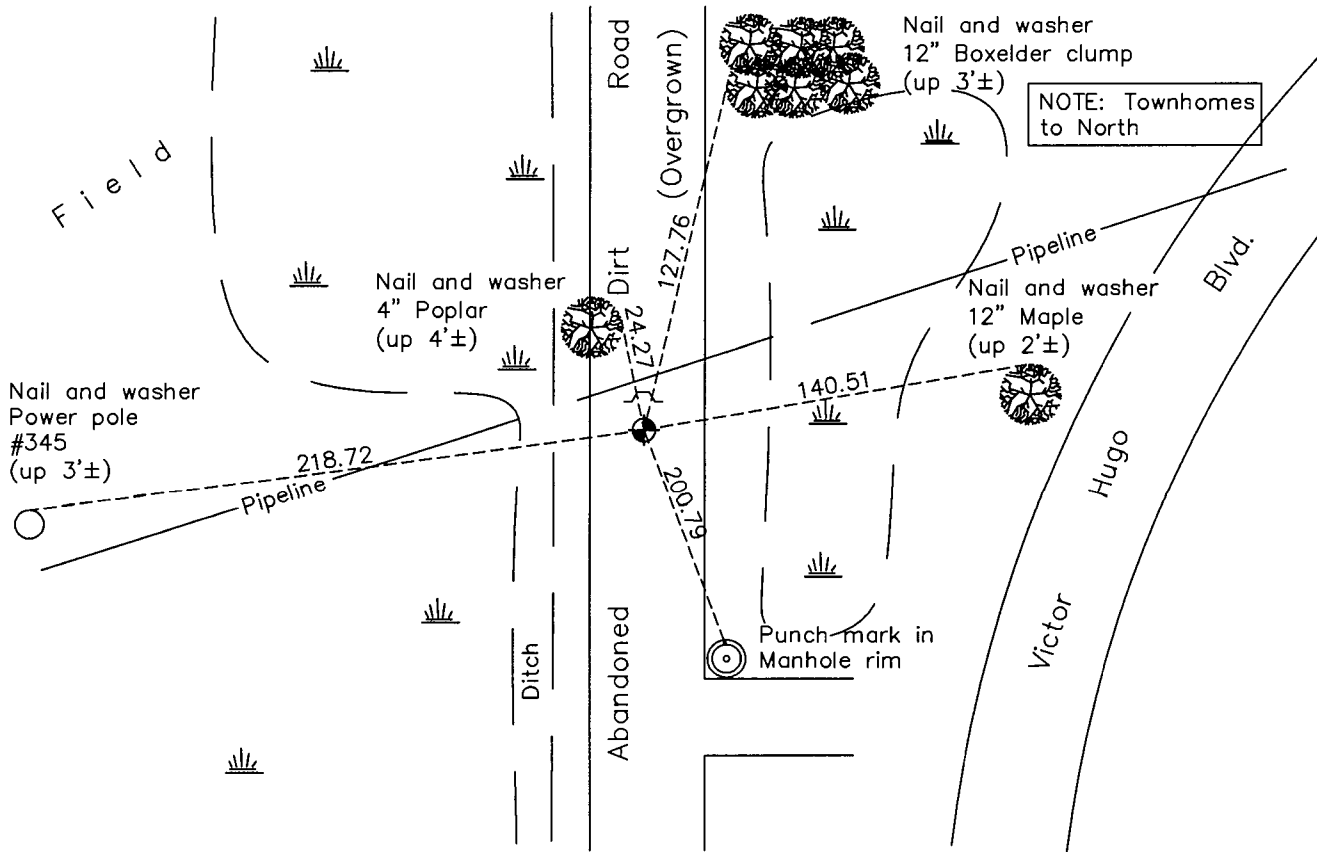
East 1/4 Corner of Sec. 24 Township 31 Range 22

On the 4th day of September, 1968, the described corner was evidenced by a 1" iron pipe

and to perpetuate the location of said corner, at the exact location thereof, a permanent marker was placed consisting of a cast iron monument 2'± west of centerline and 0.5'± below surface

AND on the 29th day of December, 2016, said permanent marker was found flush with the surface with a sign and post on north side. Ties were updated.

Updated reference ties are as shown below.



N
W ANOKA COUNTY SURVEYOR E
S

Revision Date
1/31/17

N.A.D. 1983 Coordinates
(1996 Adjustment)

County Project Coordinates	
Northing	145742.6851
Easting	563550.5722
Date	4/03/98

I hereby certify that this United States public land survey monument record is correct and complete to the best of my knowledge and belief.

Larry D. Hoium Date 6/28/17

Larry D. Hoium, Anoka County Surveyor
Minnesota License Number 18165

HISTORY OF GOVERNMENT CORNER

Page No. 91

County of Anoka

State of Minnesota

East 1/4 Corner of Sec. 24 Township 31 Range 22

CORNER HISTORY:

Date unknown - Found 1" Iron Pipe flush with the surface and with top bent. Established ties to monument.

September 4, 1968 - Found 3/4" Iron Pipe flush with the surface and updated ties.

September 5, 1968 - Set construction ties.

April 22, 1969 - Set Cast Iron Monument down 0.4'± using construction ties. Updated ties.

June 22, 1973- Found Cast Iron Monument and updated ties.

May 24, 1977- Found Cast Iron Monument and updated ties.

July 28, 1980- Found Cast Iron Monument and updated ties.

August 7, 1992- Updated ties and removed Cast Iron Monument prior to road construction.

September 9, 1992 - Set Cast Iron Monument after road construction using ties. Updated ties.

July 1, 1996- Found Cast Iron Monument and updated ties.

April 3, 1998- Replaced Cast Iron Monument set down 0.5'± and established NAD 1983 (1996 Adjustment) Anoka County Project Coordinates by Static GPS methods. Updated ties.

September 14, 2010 - Set sign and post on north side of monument.

May 18, 2011 - Found Cast Iron Monument laying down 1.0'± below surface with a sign and post on the north side. Reset Cast Iron Monument and updated ties.

May 20, 2011 - Found Cast Iron Monument and verified location of corner by VRS GPS methods. Updated ties.

December 29, 2016 - Found Cast Iron Monument flush with the surface with a sign and post on the north side. Updated ties.