

CERTIFICATE OF LOCATION OF GOVERNMENT CORNER

County of Anoka

State of Minnesota

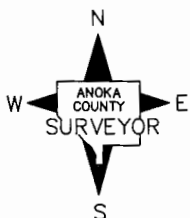
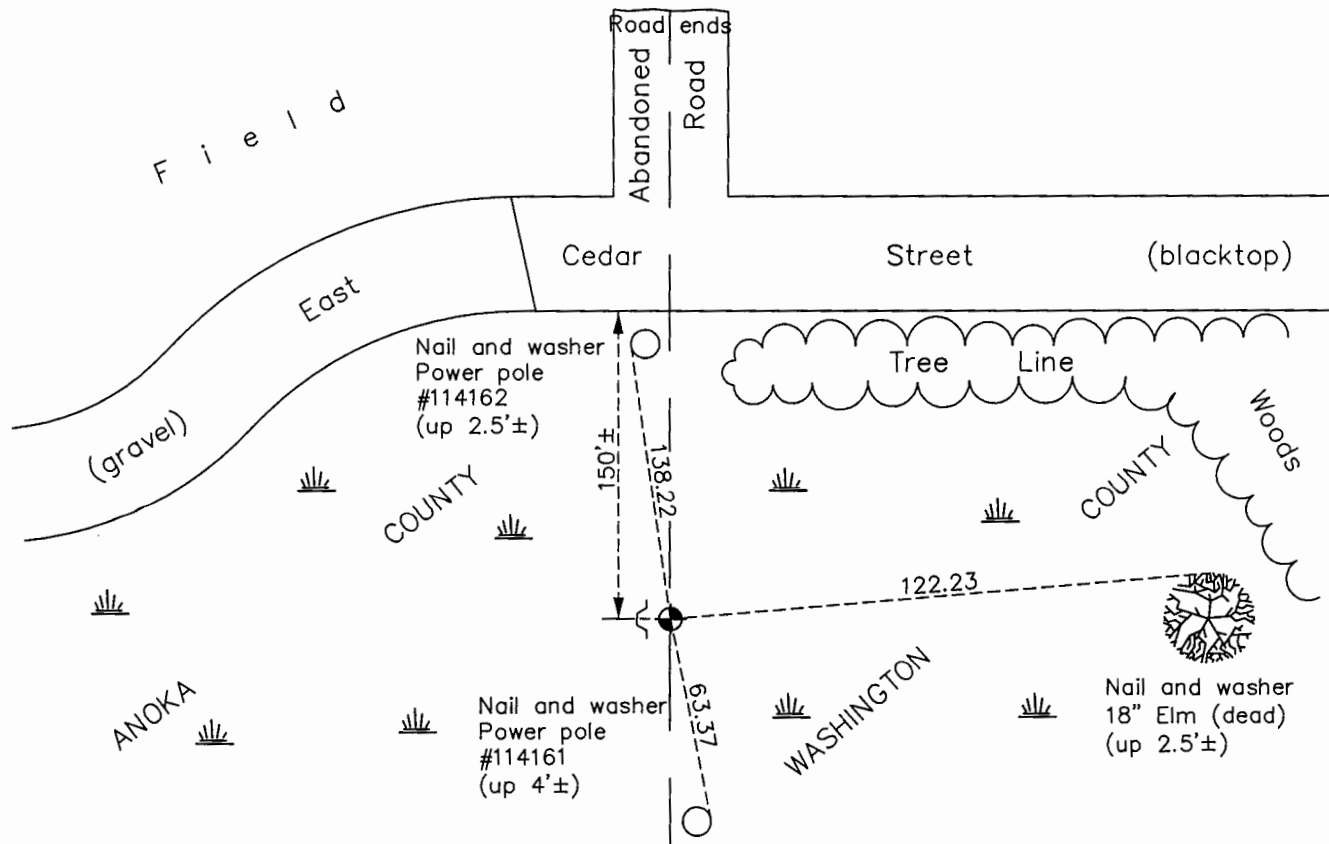
Northeast Corner of Sec. 25 Township 31 Range 22

On the 21st day of September, 1961, the described corner was evidenced by a 3" iron pipe

and to perpetuate the location of said corner, at the exact location thereof, a permanent marker was placed consisting of a cast iron monument with a sign and post on the north side

AND on the 29th day of December, 2016, said permanent marker was found up 0.4'± with a Washington County sign and post on the west side

Updated reference ties are as shown below.



Revision Date
1/31/17

N.A.D. 1983 Coordinates
(1996 Adjustment)

County Project Coordinates	
Northing	143034.1439
Easting	563546.1011
Date	3/25/98

I hereby certify that this United States public land survey monument record is correct and complete to the best of my knowledge and belief.

Larry D. Hoium Date 6/28/17

Larry D. Hoium, Anoka County Surveyor
Minnesota License Number 18165

HISTORY OF GOVERNMENT CORNER

Page No. 92

County of Anoka

State of Minnesota

Northeast Corner of Sec. 25 Township 31 Range 22

CORNER HISTORY:

September 21, 1961 - Found 3" Iron Pipe up 1.0'± in field. Established ties to monument.

July 7, 1965 - Found Iron Pipe and updated ties.

September 5, 1969 - Replaced 3" Iron Pipe with a Cast Iron Monument up 0.2'± with steel sign and post 0.8'± west of corner and up 3.5'±. Updated ties.

June 22, 1973 - Found Cast Iron Monument and updated ties.

May 25, 1977 - Found Cast Iron Monument and updated ties.

August 11, 1980 - Found Cast Iron Monument and updated ties.

September 23, 1991 - Found Cast Iron Monument and updated ties.

June 24, 1996 - Found Cast Iron Monument and updated ties.

March 25, 1998- Found Cast Iron Monument and established NAD 1983 (1996 Adjustment) Anoka County Project Coordinates by Static GPS methods. Updated ties.

September 14, 2010 - Found Cast Iron Monument up 0.4'± with a Washington County sign and post on the west side. Updated ties.

December 29, 2016 - Found Cast Iron Monument up 0.4'± with a Washington County sign and post on the west side. Updated ties.