

# CERTIFICATE OF LOCATION OF GOVERNMENT CORNER

County of Anoka

State of Minnesota

## Meander Corner of Sec. 19 Township 31 Range 22

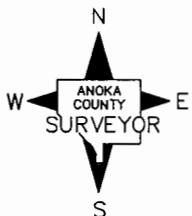
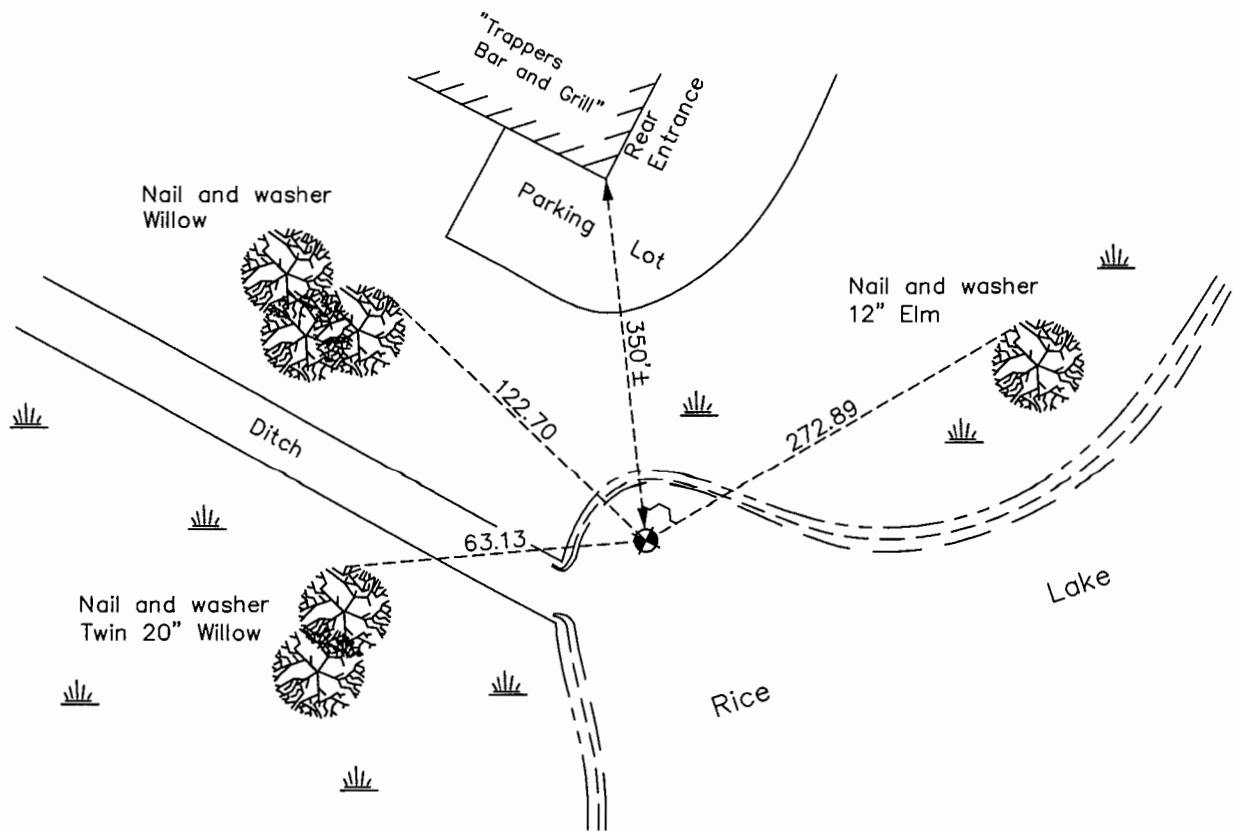
(on south line of SW 1/4)

On the 6th day of February, 1964, the described corner was evidenced by a 4"X4"  
concrete monument

and to perpetuate the location of said corner, at the exact location thereof, a permanent marker  
was placed consisting of a cast iron monument with a sign and post on the north side

AND on the 30th day of January, 2017, said permanent marker was found laying down.  
Corner needs to be reset.

Updated reference ties are as shown below.



Revision Date

7/16/17

N.A.D. 1983 Coordinates  
(1996 Adjustment)

County Project Coordinates	
Northing	<u>142967.0325</u>
Easting	<u>534457.3253</u>
Date	<u>1/03/97</u>

I hereby certify that this United States public land survey monument record is correct and complete to the best of my knowledge and belief.

*Larry D. Haium* Date 8/30/17

Larry D. Haium, Anoka County Surveyor

Minnesota License Number 18165

# HISTORY OF GOVERNMENT CORNER

Page No. 105

County of Anoka

State of Minnesota

## Meander Corner of Sec. 19 Township 31 Range 22 (on south line of SW 1/4)

### **CORNER HISTORY:**

December 30, 1944 - Cartwright set Concrete Monument up 4"± on south line of Section 19 using southwest corner of section and a stake on south line from 1918 survey records.. Established ties to monument.

February 6, 1964 - Found 4" square Concrete Monument up 0.5'± and updated ties.

August 21, 1969 - Concrete Monument not found.

July 3, 1973 - Concrete Monument not found.

September 20, 1974 - Replaced Concrete Monument with Cast Iron Monument set flush with the surface and updated ties. Set sign and post on north side of monument.

May 25, 1977 - Found Cast Iron Monument and updated ties.

August 14, 1980 - Found Cast Iron Monument and updated ties.

January 3, 1997 - Found Cast Iron Monument with sign and post on the north side and updated ties.

Revision Date 2/03/11 - Found Cast Iron Monument and updated ties.

January 30, 2017- Found Cast Iron Monument laying down - needs to be reset.