

CERTIFICATE OF LOCATION OF GOVERNMENT CORNER

County of Anoka

State of Minnesota

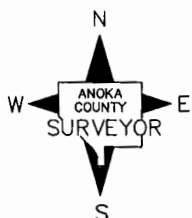
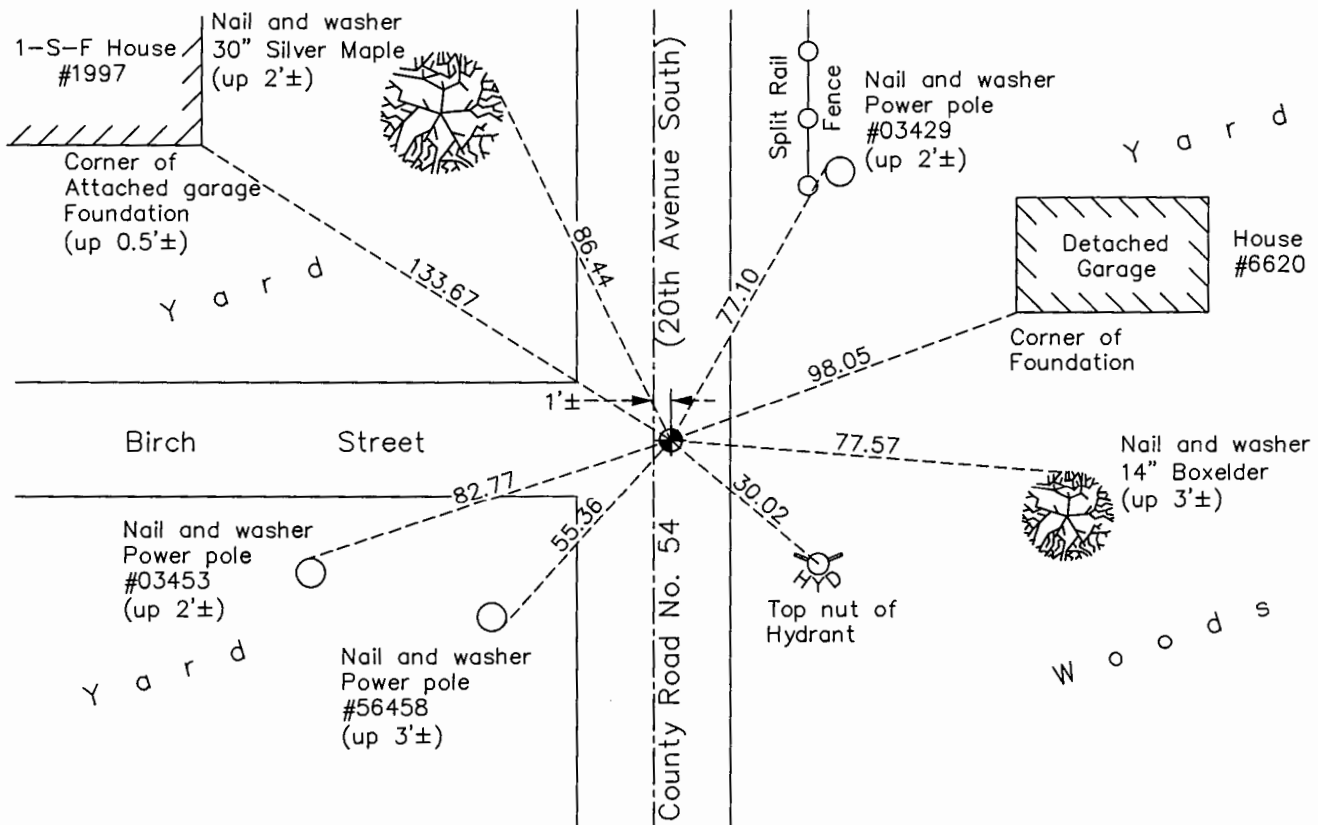
East 1/4 Corner of Sec. 26 Township 31 Range 22

On the 13th day of August, 1964, the described corner was evidenced by a 1/2" rod
from Jim Kurth ties

and to perpetuate the location of said corner, at the exact location thereof, a permanent marker
was placed consisting of a cast iron monument

AND on the 12th day of December, 2016, said permanent marker was found 0.1'± below the
surface and the ties were updated

Updated reference ties are as shown below.



Revision Date
2/2/17

N.A.D. 1983 Coordinates
(1996 Adjustment)

County Project Coordinates	
Northing	<u>140340.9511</u>
Easting	<u>558297.0748</u>
Date	<u>3/25/98</u>

I hereby certify that this United States public land survey monument record is correct and complete to the best of my knowledge and belief.

Larry D. Hoium Date 6/28/17

Larry D. Hoium, Anoka County Surveyor
Minnesota License Number 18165

HISTORY OF GOVERNMENT CORNER

Page No. 114

County of Anoka

State of Minnesota

East 1/4 Corner of Sec. 26 Township 31 Range 22

CORNER HISTORY:

Date Unknown - Jim Kurth found 1/2" rod. Established ties to monument.

August 13, 1964 - Found 1/2" Reinforcing Rod down 0.4'± and updated ties.

July 7, 1965 - Found 1/2" rod and updated ties.

September 18, 1969 - Set Cast Iron Monument down 0.4'± using ties and updated ties. 1/2" rod was not found.

September 26, 1972 - Replaced Cast Iron Monument and updated ties.

June 27, 1973 - Found Cast Iron Monument and updated ties.

June 4, 1977 - Found Cast Iron Monument and updated ties.

July 28, 1980 - Found Cast Iron Monument and updated ties.

July 7, 1986 - Found Cast Iron Monument and updated ties.

August 27, 1991 - Found Cast Iron Monument and updated ties.

June 24, 1996 - Found Cast Iron Monument and updated ties.

March 25, 1998 - Found Cast Iron Monument and established NAD 1983 (1996 Adjustment) Anoka County Project Coordinates by Static GPS methods. Updated ties.

May 10, 2011 - Found Cast Iron Monument and loosened top prior to road construction.

June 20, 2011 - Found Cast Iron Monument and raised to 0.1'± below the surface after road construction and updated ties. Monument is 1'± east of centerline.

December 12, 2016 - Found Cast Iron Monument 0.1'± below the surface of road and updated ties.