

# CERTIFICATE OF LOCATION OF GOVERNMENT CORNER

County of Anoka

State of Minnesota

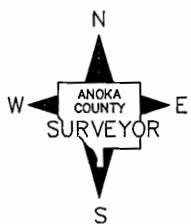
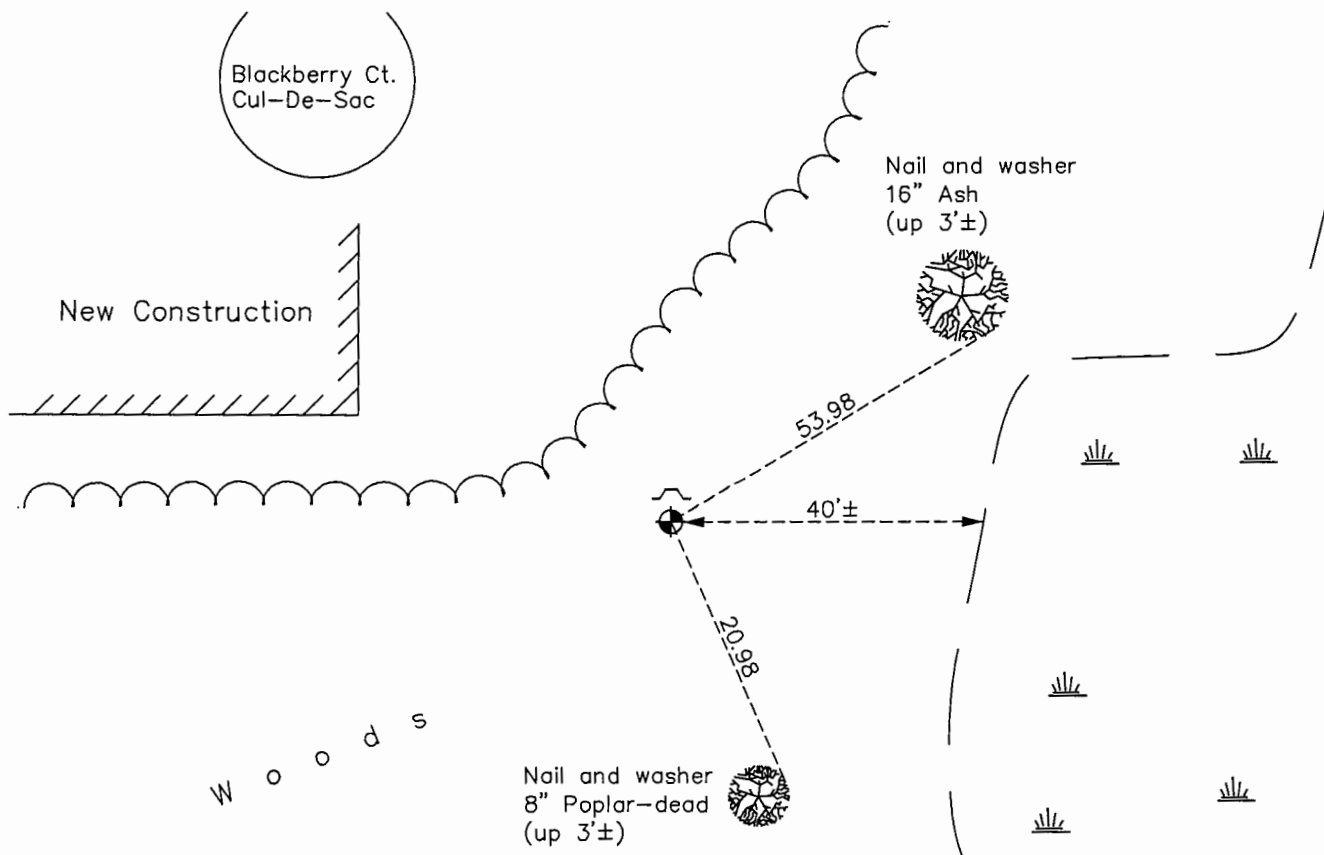
Witness Corner of Sec. 28 Township 31 Range 22  
(on south line of SW 1/4)

On the 3rd day of January, 1992, the described corner was evidenced by area resurvey

and to perpetuate the location of said corner, at the exact location thereof, a permanent marker was placed consisting of a cast iron monument with a sign and post on the north side

AND on the 19th day of December, 2016, said permanent marker was found flush with the surface and the ties were updated

Updated reference ties are as shown below.



Revision Date  
3/24/17

N.A.D. 1983 Coordinates  
(1996 Adjustment)

County Project Coordinates	
Northing	137710.1869
Easting	544833.1802
Date	4/28/98

I hereby certify that this United States public land survey monument record is correct and complete to the best of my knowledge and belief.

*Larry D. Hoium* Date 9/06/17  
 Larry D. Hoium, Anoka County Surveyor  
 Minnesota License Number 18165

# HISTORY OF GOVERNMENT CORNER

Page No. 123

County of Anoka

State of Minnesota

Witness Corner of Sec. 28 Township 31 Range 22  
(on south line of SW 1/4)

## **CORNER HISTORY:**

January 3, 1992 - Set Cast Iron Monument using area resurvey with a sign and post on the north side.  
Established ties to monument.

April 28, 1998 - Found Cast Iron Monument with sign and post on the north side and established NAD 1983  
(1996 Adjustment) Anoka County Project Coordinates by Static GPS methods. Updated ties.

September 16, 2010 - Found Cast Iron Monument flush with the surface and updated ties.

December 19, 2016- Found Cast Iron Monument flush with the surface with a sign and post on the north side.  
Updated ties.