

CERTIFICATE OF LOCATION OF GOVERNMENT CORNER

County of Anoka

State of Minnesota

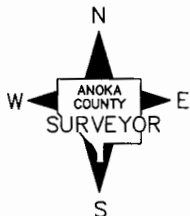
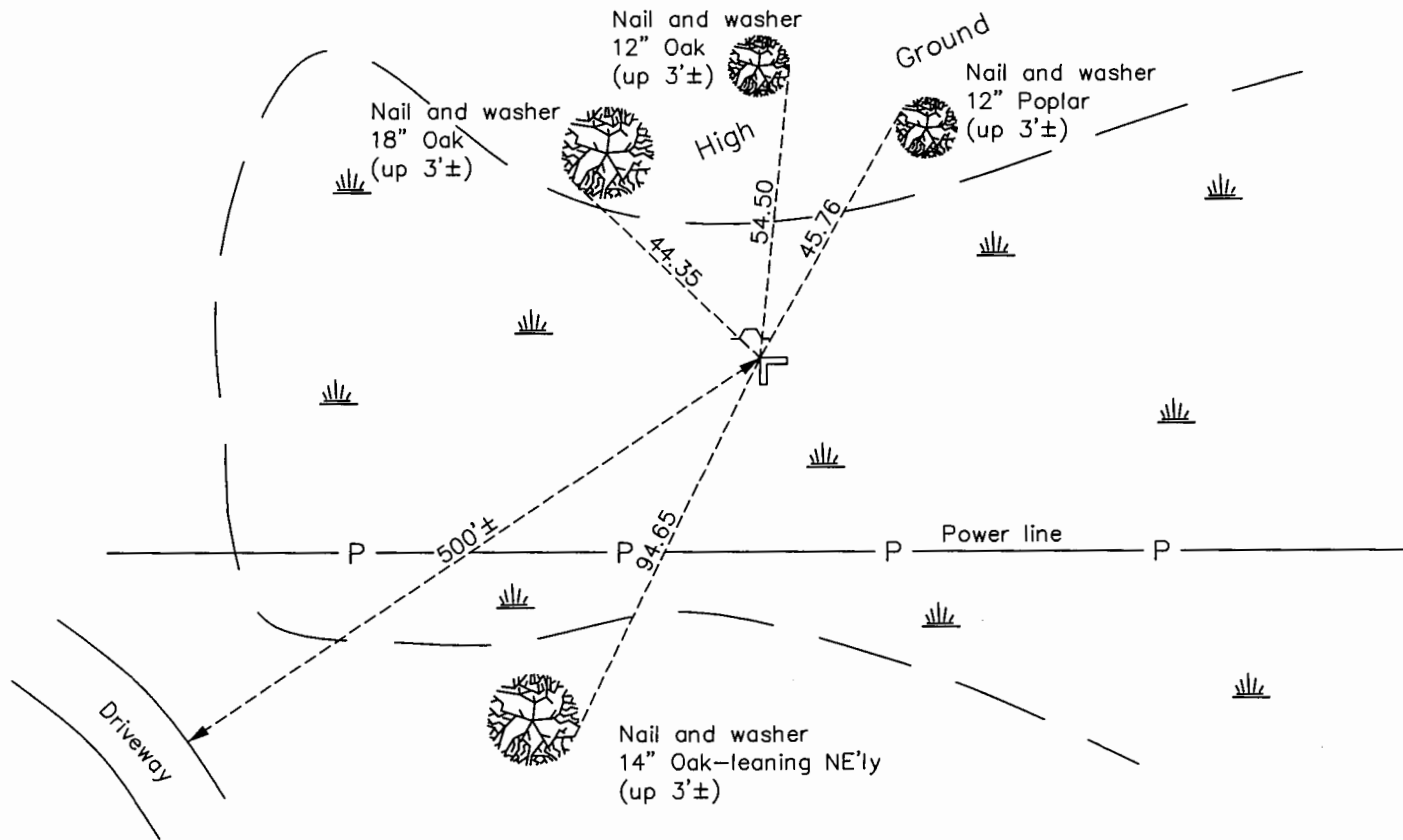
West 1/4 Corner of Sec. 33 Township 31 Range 22

On the 4th day of May, 1971, the described corner was evidenced by a 2" angle iron

and to perpetuate the location of said corner, at the exact location thereof, a permanent marker was placed consisting of the same 2" angle iron set in concrete with a sign and post on the north side

AND on the 9th day of January, 2017, said permanent marker was found up 1'± and the ties were updated

Updated reference ties are as shown below.



Revision Date
6/8/17

N.A.D. 1983 Coordinates
(1996 Adjustment)

County Project Coordinates	
Northing	135070.9812
Easting	542568.7957
Date	4/02/98

I hereby certify that this United States public land survey monument record is correct and complete to the best of my knowledge and belief.

Larry D. Hoium Date 9/06/17
 Larry D. Hoium, Anoka County Surveyor
 Minnesota License Number 18165

HISTORY OF GOVERNMENT CORNER

County of Anoka

State of Minnesota

West 1/4 Corner of Sec. 33 Township 31 Range 22**CORNER HISTORY:**

May 4, 1971 - Found 2" Angle Iron up 1'± in a 3'± dia. concrete slab . Set sign and post on north edge of concrete slab and established ties to monument.

July 10, 1973 - Could not get to 2" Angle Iron, check in the winter.

January 4, 1974 - Found 2" Angle Iron and updated ties.

January 6, 1978 - Found 2" Angle Iron up 1'± with sign and post on the north side and updated ties.

May 29, 1981 - Found 2" Angle Iron and updated ties.

July 28, 1986 - Found 2" Angle Iron and updated ties.

October 30, 1991- Found 2" Angle Iron and updated ties.

June 20, 1996 - Found 2" Angle Iron and updated ties.

April 2, 1998- Found 2" Angle Iron and established NAD 1983 (1996 Adjustment) Anoka County Project Coordinates by Static GPS methods. Updated ties.

September 21, 2010 - Found 2" Angle Iron up 1'± and updated ties.

January 9, 2017 - Found 2" Angle Iron up 1'± and updated ties.