

# CERTIFICATE OF LOCATION OF GOVERNMENT CORNER

County of Anoka

State of Minnesota

## Meander Corner of Sec. 36 Township 31 Range 22

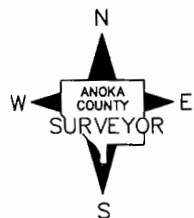
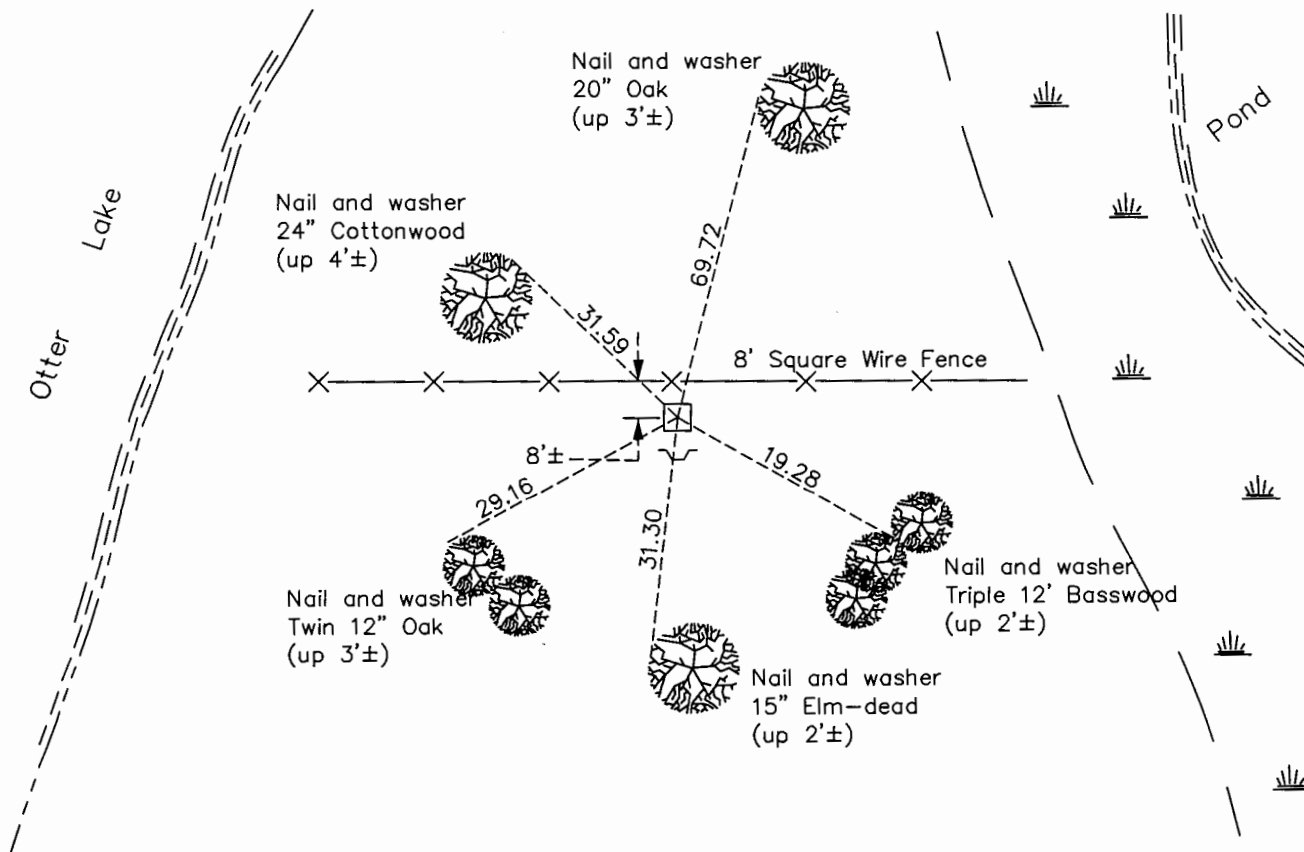
(Meander Corner No. 33—on south line of section)

On the 8th day of July, 1963, the described corner was evidenced by a granite monument

and to perpetuate the location of said corner, at the exact location thereof, a permanent marker was placed consisting of the same granite monument with a sign and post on the south side

AND on the 28th day of December, 2016, said permanent marker was found down 0.1'± and the ties were updated

Updated reference ties are as shown below.



Revision Date

2/7/17

N.A.D. 1983 Coordinates  
(1996 Adjustment)

County Project Coordinates	
Northing	132393.5412
Easting	559540.5858
Date	4/08/98

I hereby certify that this United States public land survey monument record is correct and complete to the best of my knowledge and belief.

*Larry D. Hoium* Date 6/28/17

Larry D. Hoium, Anoka County Surveyor

Minnesota License Number 18165

# HISTORY OF GOVERNMENT CORNER

Page No. 141

County of Anoka

State of Minnesota

## Meander Corner of Sec. 36 Township 31 Range 22 (Meander Corner No. 33—on south line of section)

### **CORNER HISTORY:**

June 27, 1946 - Cartwright found Granite Monument. Established ties to monument.

July 8, 1963 - Found Granite Monument up 0.7'± with a drill hole in the center and updated ties.

June 30, 1965 - Found Granite Monument down 0.2'± and updated ties.

July 20, 1973 - Found Granite Monument and updated ties.

August 14, 1980 - Found Granite Monument and updated ties.

August 5, 1992 - Found Granite Monument with a sign and post on the south side and updated ties.

June 24, 1996 - Found Granite Monument and updated ties.

April 8, 1998 - Found Granite Monument and established NAD 1983 (1996 Adjustment) Anoka County Project Coordinates by Static GPS methods. Updated ties.

July 19, 2010 - Found Granite Monument down 0.1'± and updated ties.

December 28, 2016 - Found Granite Monument down 0.1'± with a sign and post on the south side and updated ties.